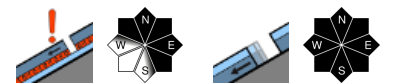


## Predominantly favorable conditions, moderate avalanche danger

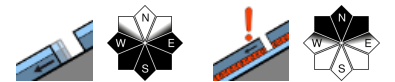


Verwall, Lechquellengebirge, Lechtaler Alpen, Rätikon West, Rätikon Ost, Silvretta, Allgäuer Alpen



1500 m

Voralpenbereich, Bregenzerwaldgebirge



### Avalanche problems



### Danger ratings



### Expositions



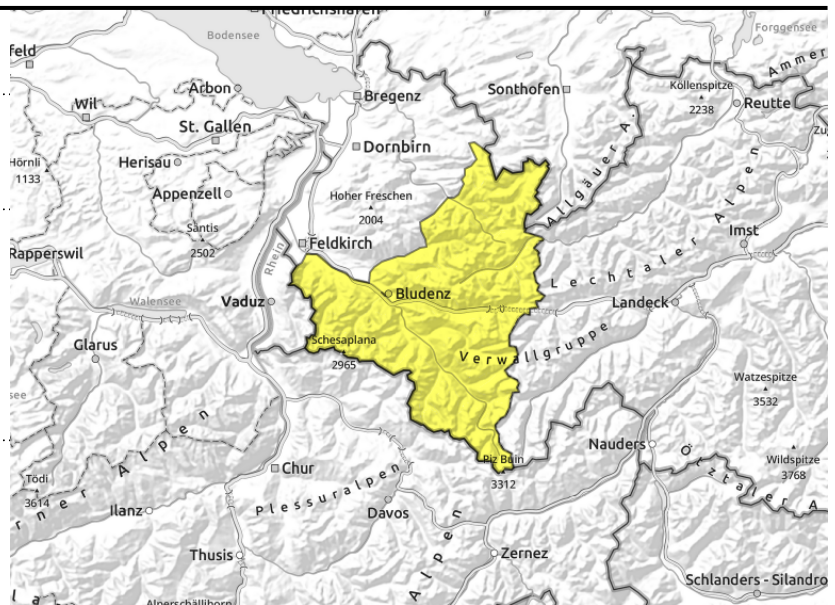
**Verwall, Lechquellengebirge, Lechtaler Alpen, Rätikon West, Rätikon Ost, Silvretta, Allgäuer Alpen**



>2200 m: near to and distant from ridges, behind discontinuities, wind-loaded gullies, bowls (more frequent and more dangerous at higher altitudes)



<2500 m on steep smooth slopes and rock plates due to warmth



**Mostly moderate danger, glide-snow avalanches persist**

Predominantly favorable conditions prevail, avalanche danger is moderate. Near-surface layers and older drifts are increasingly prone to triggering at higher altitudes. Danger zones occur esp. in transitions from shallow to deep snow and in heavily wind-loaded terrain. Avalanches can be triggered by large additional loading and grow to medium size. Backcountry sports require prudent route selection. Caution urged near cornices. The situation is more critical at high altitudes, loose-snow avalanches are possible esp. in steep sunny and rocky terrain. Glide-snow avalanches are still a threat on steep grass-covered and rocky slopes in all aspects, avoid zones below glide cracks.

**Snowpack structure**

The fresh snow and drifts were deposited atop a compact old snowpack surface, bonding is generally only moderate, also graupel has been covered over. Zones where there has been recent rainfall have hard, icy surface in the morning. The warm ground and the moist-to-wet snowpack are reinforcing gliding snow movement.

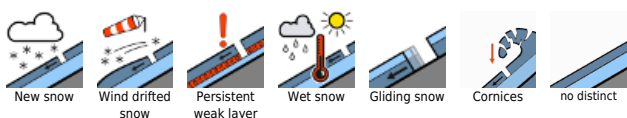
**Weather**

Nocturnal hours: Scattered clouds with good outgoing longwave radiation. Monday daytime: Cloudless skies, superb visibility and winds only light up to high-alpine altitudes. Zero-degree level will rise to nearly 3000 m. At 2000 m: -0 to +7 degrees. Light winds from varying directions.

**Outlook**

The coming days will be sunny and mild up to high altitudes. Favorable conditions prevail with slightly rising danger as the day unfolds. Glide-snow avalanches continue to be possible, however.

**Avalanche problems**



**Danger ratings**




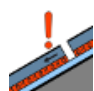
**Expositions**

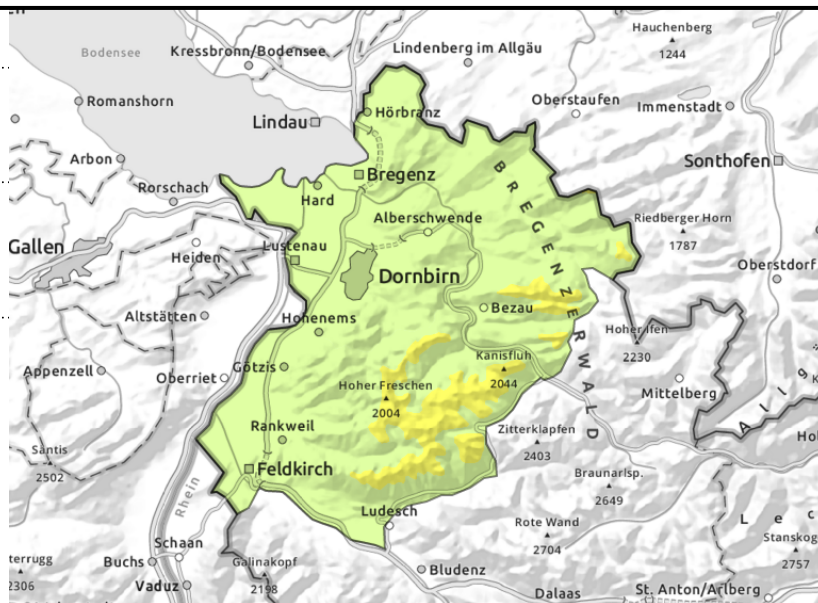


**Voralpenbereich, Bregenzerwaldgebirge**



 isolated glide-snow avalanches on steep grassy slopes and over rocks

 >1800 m: near-surface layers



**Persistent wet-snow avalanches, increasing moist slides, otherwise favorable conditions**

On steep grass-covered slopes and over smooth rocks in all aspects, small glide-snow avalanches are possible. Avoid spots below glide cracks. Small drifts at high altitudes are sometimes prone to triggering. Danger zones occur behind discontinuities and in wind-loaded gullies and bowls. Small isolated medium-sized avalanches can be triggered by one person, but usually require large additional loading. Mind the risks of being swept along and taking a fall.

**Snowpack structure**

Warm ground and a compact but moist-to-wet snowpack reinforce gliding snow movements of the entire snowpack. Up to nearly 1500 m, only little snow on the ground. Higher up, small drifts are generally well bonded with the surface. On shady slopes the uppermost layers are still prone to triggering. Where there was rainfall, the surfaces are hard or icy in the morning.

**Weather**

Nocturnal hours: Scattered clouds with good outgoing longwave radiation. Monday daytime: Cloudless skies, superb visibility and winds only light up to high-alpine altitudes. Zero-degree level will rise to nearly 3000 m. At 2000 m: -0 to +7 degrees. Light winds from varying directions.

**Outlook**

The coming days will be sunny and mild up to high altitudes. Favorable conditions prevail with slightly rising danger as the day unfolds. Glide-snow avalanches continue to be possible, however.

Translated by Jeffrey McCabe, [www.creativtrans.com](http://www.creativtrans.com)

**Avalanche problems**



**Danger ratings**



**Expositions**

