

## Increasingly favorable conditions, moderate avalanche danger

	Verwall, Lechquellengebirge, Lechtaler Alpen, Rätikon West, Rätikon Ost, Silvretta, Allgäuer Alpen	
	Voralpenbereich, Bregenzerwaldgebirge	

### Avalanche problems



### Danger ratings



### Expositions



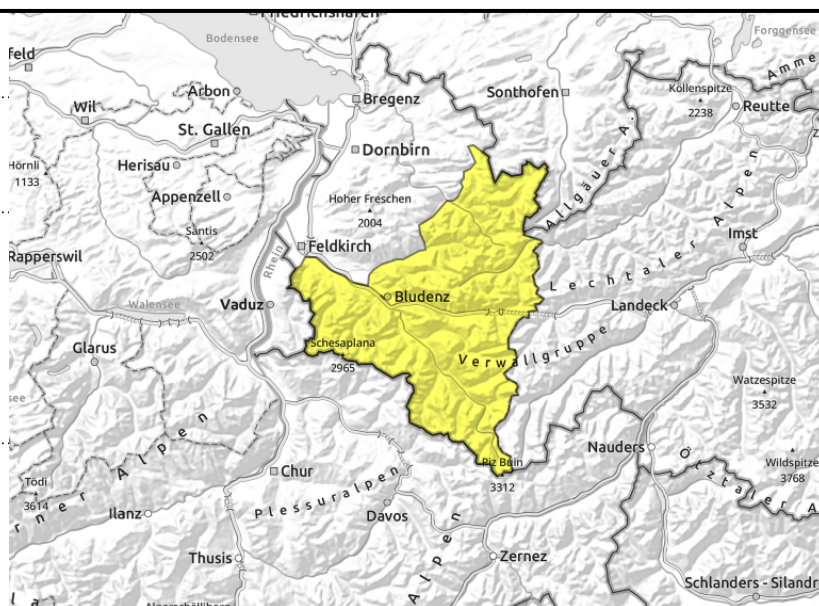
**Verwall, Lechquellengebirge, Lechtaler Alpen, Rätikon West, Rätikon Ost, Silvretta, Allgäuer Alpen**



>2200 m: near to and distant from ridges, behind discontinuities, wind-loaded gullies, bowls (more frequent and more dangerous at higher altitudes)



<2500 m on steep smooth slopes and rock plates



**Mostly moderate danger, glide-snow avalanches persist**

Predominantly favorable conditions prevail, avalanche danger is moderate. Snowdrifts are still prone to triggering at higher altitudes. Danger zones occur in steep ridgeline terrain, behind discontinuities and in wind-loaded gullies and bowls. Small-to-medium sized avalanches can be triggered by one person. Backcountry sports require prudent route selection; mind the risks of falling. The situation is more critical at high altitudes, loose-snow avalanches are possible esp. in steep sunny and rocky terrain. Glide-snow avalanches are still a threat on steep grass-covered and rocky slopes in all aspects, avoid zones below glide cracks.

**Snowpack structure**

The recent fresh snow was deposited atop a weakened old snowpack surface which is wet up to high altitudes. Snowdrifts from recent days have been blanketed by freshly generated snowdrifts, bonding is poor at high altitudes, also graupel has been covered over. The warm ground and the moist-to-wet snowpack are reinforcing gliding snow movement.

**Weather**

Nocturnal hours: Nearly clear skies, and cold. Sunday daytime: Cloudless skies, superb visibility and winds only light up to high-alpine altitudes. Zero-degree level will rise to nearly 2800 m. At 2000 m: -5 to +5 degrees. Light northerly winds.

**Outlook**

The coming days will be sunny and mild up to high altitudes. Favorable conditions prevail. Glide-snow avalanches continue to be possible, however.

**Avalanche problems**



**Danger ratings**







**Expositions**

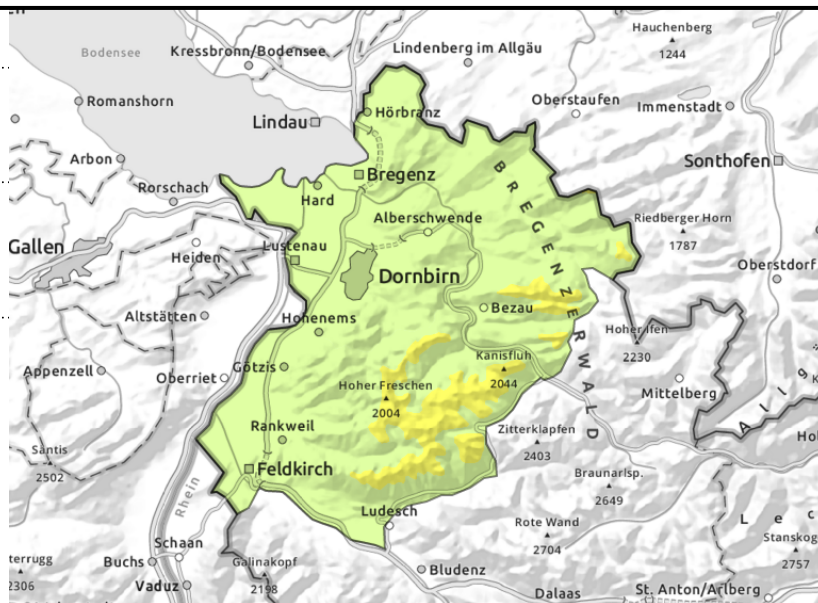


**Voralpenbereich, Bregenzerwaldgebirge**



  isolated glide-snow avalanches on steep grassy slopes and over rocks

  >1800 m: behind discontinuities, wind-loaded gullies and bowls



**Persistent wet-snow avalanches, beware small drifts at high altitudes**

On steep grass-covered slopes and over smooth rocks in all aspects, small glide-snow avalanches are possible. Avoid spots below glide cracks. Small drifts at high altitudes are sometimes prone to triggering. Danger zones occur behind discontinuities and in wind-loaded gullies and bowls. Small isolated medium-sized avalanches can be triggered by one person, but usually require large additional loading. Mind the risks of being swept along and taking a fall.

**Snowpack structure**

The minor fresh snow was recently deposited atop a weakened old snowpack surface which is wet up to high altitudes. Up to 1500 m there is little snow on the ground. Snowdrifts from recent days have been blanketed by freshly generated snowdrifts, bonding is poor at high altitudes, also graupel has been covered over. Near-surface layers are often prone to triggering. Where there was rain impact during the last few days, the snowpack surfaces are encrusted or icy.

**Weather**

Nocturnal hours: Nearly clear skies, and cold. Sunday daytime: Cloudless skies, superb visibility and winds only light up to high-alpine altitudes. Zero-degree level will rise to nearly 2800 m. At 2000 m: -5 to +5 degrees. Light northerly winds.

**Outlook**

The coming days will be sunny and mild up to high altitudes. Favorable conditions prevail. Glide-snow avalanches continue to be possible, however.

Translated by Jeffrey McCabe, [www.creativtrans.com](http://www.creativtrans.com)

**Avalanche problems**



**Danger ratings**



**Expositions**

