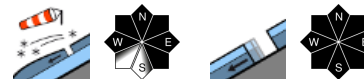


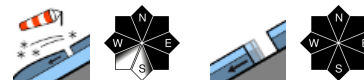
## UPDATE: Considerable avalanche danger due to fresh snow and wind



Verwall, Lechquellengebirge, Lechtaler Alpen, Rätikon West, Rätikon Ost, Silvretta



Voralpenbereich, Allgäuer Alpen, Bregenzerwaldgebirge



### Avalanche problems



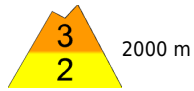
### Danger ratings



### Expositions



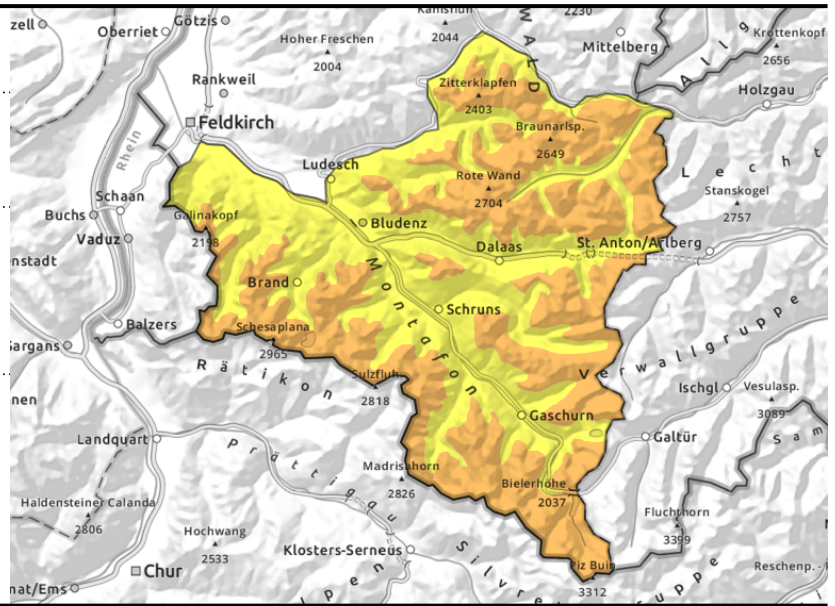
**Verwall, Lechquellengebirge, Lechtaler Alpen, Rätikon West, Rätikon Ost, Silvretta**



steep terrain near to and distant from ridges, behind discontinuities, wind-loaded gullies, bowls



smooth steep slopes, grass-covered, rock plates



**Main danger: fresh snowdrifts at high altitudes**

Fresh snowdrifts are trigger-prone at high altitudes and are easily triggered. Size and frequency of danger zones increase with ascending altitude. Danger zones are covered, they occur in ridgeline terrain, behind discontinuities and in wind-loaded gullies and bowls, increasingly occur also distant from ridges. Small-to-medium sized avalanches can be triggered by one person. Backcountry sports require much experience in assessing avalanche dangers on-site and prudent route selection; mind the risks of falling. Small loose-snow avalanches are possible in steep rocky terrain due to solar radiation. Despite lower temperatures, glide-snow avalanches are still a threat on steep grass-covered and rocky slopes in all aspects, avoid zones below glide cracks.

**Snowpack structure**

Strong to stormy winds have transported the loose snow, generating trigger-prone snowdrift accumulations. Older drifts are bonding better with the surface, but with increasing altitude are still prone to triggering, esp on high-altitude shady slopes. The old snowpack below them is generally well consolidated and stable. The warm ground and wet lower layers are reinforcing the gliding movement of the entire snowpack.

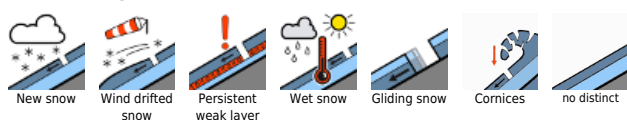
**Weather**

Tuesday daytime: Snow showers will taper off, clouds will disperse. Starting at midday, temporarily better visibility before cloud cover brings in the next front. At 2000 m: -6 to -3 degrees. Strong to stormy W/NW winds.

**Outlook**

Starting on Wednesday, variably conditions with mild temperatures and storm-strength winds. Avalanche danger levels are not expected to change significantly.

**Avalanche problems**



**Danger ratings**



**Expositions**



**Voralpenbereich, Allgäuer Alpen, Bregenzerwaldgebirge**



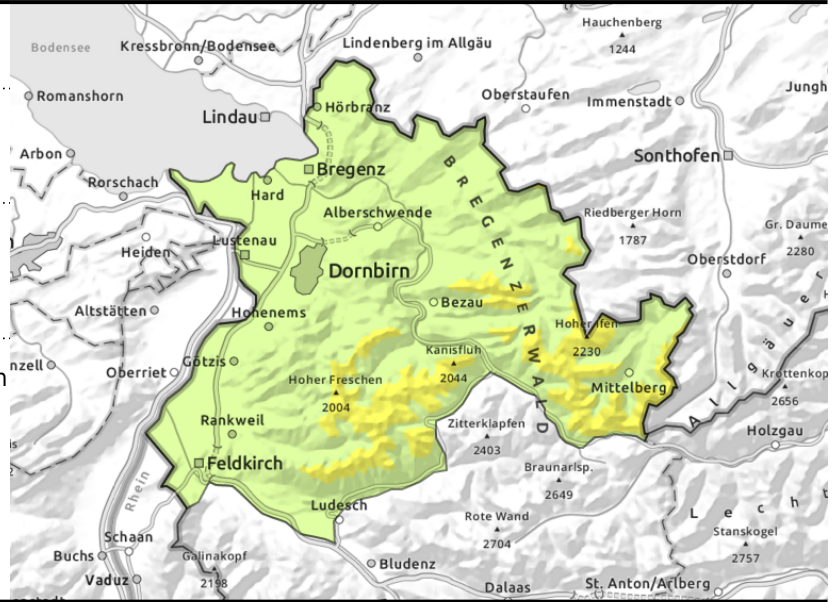
forestline



ridgeline terrain, behind discontinuities, wind-loaded gullies and bowls



in zones with sufficient snow on the ground



**Pay close heed to small snowdrifts at high altitudes**

Fresh snowdrifts are trigger-prone and the main danger at high altitudes. Danger zones occur in ridgeline terrain, behind discontinuities and in wind-loaded gullies and bowls. Small-to-medium sized avalanches can be triggered by one person. Danger zones are being blanketed over and are difficult to recognize. Despite lower temperatures, glide-snow avalanches are still a threat on steep grass-covered and rocky slopes in all aspects, avoid zones below glide cracks.

**Snowpack structure**

Strong to stormy winds have transported the loose snow, generating trigger-prone snowdrift accumulations. Older drifts are bonding better with the surface, but with increasing altitude are still prone to triggering, esp on high-altitude shady slopes. The old snowpack below them is generally well consolidated and stable. The warm ground and wet lower layers are reinforcing the gliding movement of the entire snowpack, esp. where there is rain impact.

**Weather**

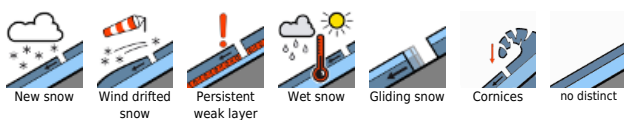
Tuesday daytime: Snow showers will taper off, clouds will disperse. Starting at midday, temporarily better visibility before cloud cover brings in the next front. At 2000 m: -6 to -3 degrees. Strong to stormy W/NW winds.

**Outlook**

Starting on Wednesday, variably conditions with mild temperatures and storm-strength winds. Avalanche danger levels are not expected to change significantly.

Translated by Jeffrey McCabe, [www.creativtrans.com](http://www.creativtrans.com)

**Avalanche problems**



**Danger ratings**



**Expositions**

