

Snowdrifts at high altitudes often easily triggerable

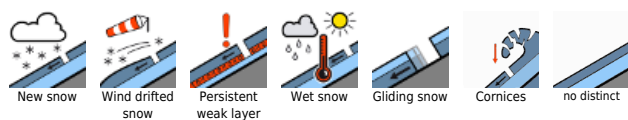


1800 m

Verwall, Lechquellengebirge, Lechtaler Alpen, Allgäuer Alpen, Rätikon West, Rätikon Ost, Silvretta, Bregenzerwaldgebirge, Voralpenbereich



Avalanche problems



Danger ratings



Expositions

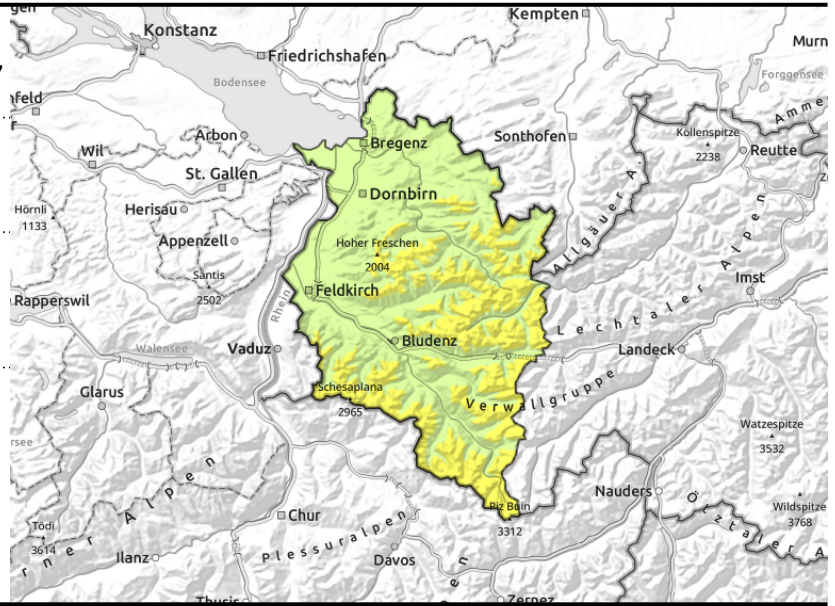


Verwall, Lechquellengebirge, Lechtaler Alpen, Allgäuer Alpen, Rätikon West, Rätikon Ost, Silvretta, Bregenzerwaldgebirge, Voralpenbereich



steep ridgeline terrain, behind discontinuities, wind-loaded gullies, bowls

smooth steep slopes, grass-covered, rock plates



Danger zones blanketed: difficult to recognize

Fresh and older snowdrifts are trigger-prone at high altitudes. Danger zones are covered, they occur in ridgeline terrain, behind discontinuities and in wind-loaded gullies and bowls. Small-to-medium sized avalanches can be triggered by one person. Older danger zones have been blanketed and are difficult to recognize. Backcountry sports require much experience in assessing avalanche dangers on-site and prudent route selection. Despite lower temperatures, glide-snow avalanches are still a threat on steep grass-covered and rocky slopes in all aspects, avoid zones below glide cracks.

Snowpack structure

The snowdrift accumulations generated over the last few days are bonding only very slowly on shady slopes and with ascending altitude. Fresh and older drifts often lie deposited as soft faceted layers or surface hoar, poorly bonded. Older drifts have been covered, the old snowpack below them is generally well consolidated and stable. The warm ground and wet lower layers are reinforcing the gliding movement of the entire snowpack.

Weather

Nocturnal hours: Cloudless skies, bitter cold. Saturday daytime: Unhampered sunshine, cold but slowly rising temperatures. At 2000 m: -12 degrees to -5 degrees. Easterly winds slackening off and shifting to northerly.

Outlook

Sunday morning: clouds passing through at high altitude, sunnier in the afternoon. Temperatures rising at high altitude. Avalanche danger levels will gradually diminish.

Translated by Jeffrey McCabe, www.creativtrans.com

Avalanche problems



Danger ratings



Expositions

