

## Trigger-prone snowdrifts at high altitudes easily triggerable

	2000 m	Verwall, Lechtalengebirge, Lechtaler Alpen, Allgäuer Alpen, Rätikon West, Rätikon Ost, Silvretta	
	1600 m	Bregenzerwaldgebirge, Voralpenbereich	

### Avalanche problems



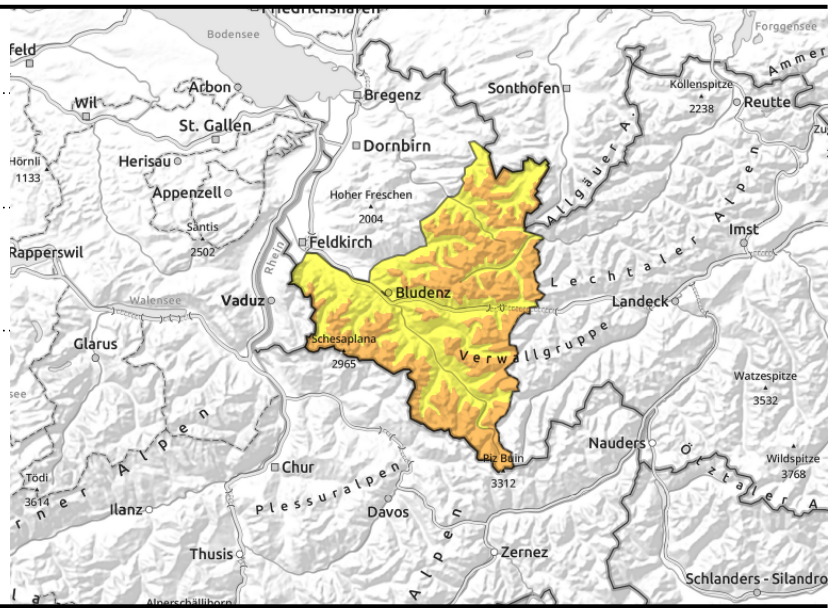
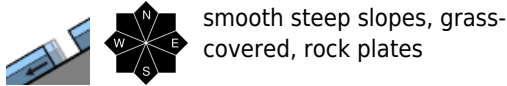
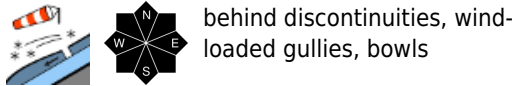
### Danger ratings



### Expositions



**Verwall, Lechquellengebirge, Lechtaler Alpen, Allgäuer Alpen, Rätikon West, Rätikon Ost, Silvretta**



**Main danger: trigger-prone snowdrifts**

Fresh snowdrifts are trigger-prone and the main danger at high altitudes. Danger zones occur in ridgeline terrain, behind discontinuities and in wind-loaded gullies and bowls. Small-to-medium sized avalanches can be triggered by one person. Older danger zones have been blanketed and are difficult to recognize. Backcountry sports require much experience in assessing avalanche dangers on-site. Despite lower temperatures, glide-snow avalanches are still a threat on steep grass-covered and rocky slopes in all aspects, avoid zones below glide cracks.

**Snowpack structure**

Brisk strong westerly winds at all altitudes are transporting the fresh snowfall. An additional 10-20 cm of fresh snow is expected amid northerly winds on Thursday night and into Friday morning, up to 25 cm in Bregenzerwald and in Allgäu Alps. Fresh and older drifts often lie deposited stop soft faceted layers or surface hoar, poorly bonded. Older drifts have been covered, the old snowpack below them is generally well consolidated and stable. Where there is rain impact the snowpack is moist. The warm ground and wet lower layers are reinforcing the gliding movement of the entire snowpack.

**Weather**

Nocturnal hours: A cold front will move in starting in the evening, swiftly dropping snowfall level down to low lying areas, also strong and gusty westerly winds. Until Friday morning, snow showers at all altitudes are expected. Friday daytime: Light snow showers from Bregenzerwald to Arlberg only in the morning, clouds will begin to disperse, sunshine in the afternoon. At 2000 m: -13 degrees at midday. Moderate to brisk northerly winds.

**Outlook**

High pressure, tranquil weather conditions on the weekend, temperatures rising. Avalanche danger levels will gradually diminish.

**Avalanche problems**



**Danger ratings**





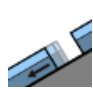

**Expositions**

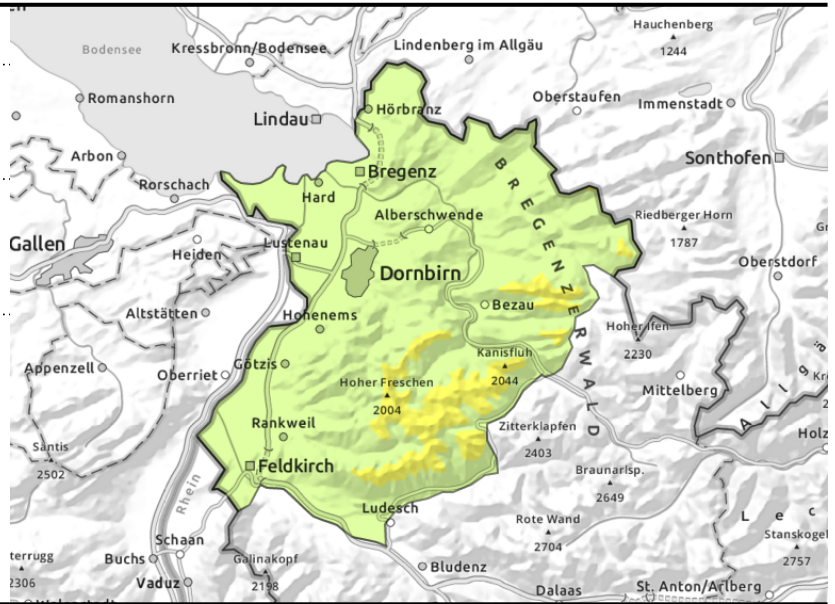


**Bregenzerwaldgebirge, Voralpenbereich**



  steep ridgeline terrain, behind discontinuities, wind-loaded gullies and bowls

  smooth steep slopes, grass-covered, rock plates



**Pay close heed to snowdrifts at high altitudes**

Fresh snowdrifts are trigger-prone and the main danger at high altitudes. Danger zones occur in ridgeline terrain, behind discontinuities and in wind-loaded gullies and bowls. Small-to-medium sized avalanches can be triggered by one person. Danger zones are being blanketed over and are difficult to recognize. Despite lower temperatures, glide-snow avalanches are still a threat on steep grass-covered and rocky slopes in all aspects, avoid zones below glide cracks.

**Snowpack structure**

Brisk to strong westerly winds at all altitudes are transporting the fresh snowfall. An additional 10-20 cm of fresh snow is expected amid northerly winds on Thursday night and into Friday morning, up to 25 cm in Bregenzerwald and in Allgäu Alps. Fresh and older drifts often lie deposited stop soft faceted layers or surface hoar, poorly bonded. Older drifts have been covered, the old snowpack below them is generally well consolidated and stable. Where there is rain impact the snowpack is moist. The warm ground and wet lower layers are reinforcing the gliding movement of the entire snowpack.

**Weather**

Nocturnal hours: A cold front will move in starting in the evening, swiftly dropping snowfall level down to low lying areas, also strong and gusty westerly winds. Until Friday morning, snow showers at all altitudes are expected. Friday daytime: Light snow showers from Bregenzerwald to Arlberg only in the morning, clouds will begin to disperse, sunshine in the afternoon. At 2000 m: -13 degrees at midday. Moderate to brisk northerly winds.

**Outlook**

High pressure, tranquil weather conditions on the weekend, temperatures rising. Avalanche danger levels will gradually diminish.

Translated by Jeffrey McCabe, [www.creativtrans.com](http://www.creativtrans.com)

**Avalanche problems**



**Danger ratings**



**Expositions**

