

## Fresh snowdrift accumulations at high altitude, increasing wet-snow/glide-snow avalanches where there is rainfall



Verwall, Lechquellengebirge, Lechtaler Alpen, Allgäuer Alpen, Rätikon West, Rätikon Ost, Silvretta



Bregenzerwaldgebirge, Voralpenbereich



### Avalanche problems



### Danger ratings



### Expositions

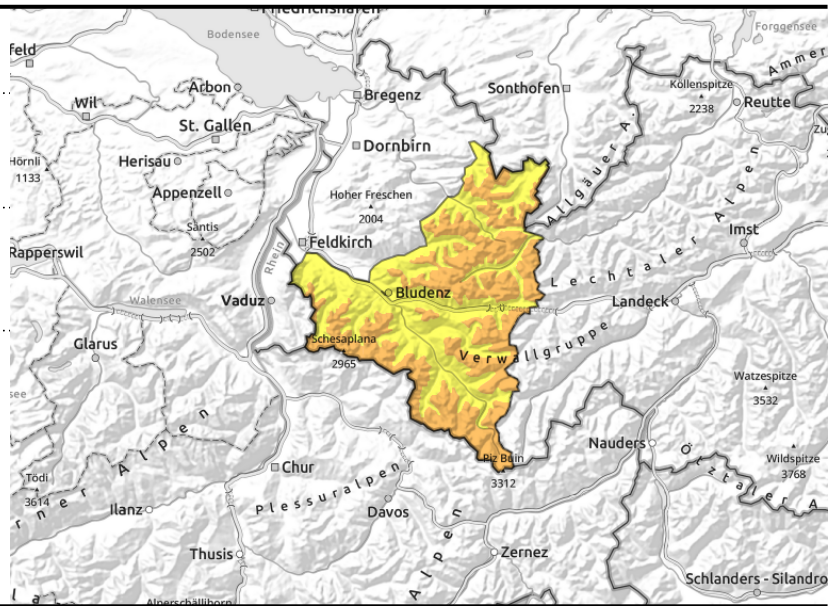


**Verwall, Lechquellengebirge, Lechtaler Alpen, Allgäuer Alpen, Rätikon West, Rätikon Ost, Silvretta**



behind discontinuities, wind-loaded gullies, bowls

in rain-impacted areas slides/wet avalanches, also glide-snow avalanches



## Trigger-prone snowdrifts, wet avalanches due to rain, increasing glide-snow avalanches

Fresh snow and drifts are trigger-prone and the main danger at high altitudes. Danger zones occur in ridgeline terrain, behind discontinuities and in wind-loaded gullies and bowls. Small-to-medium sized avalanches can be triggered by one person. Pay attention to the risks of falling and being swept along. Where there is rain impact, wet slides and avalanches are possible. On steep grass-covered slopes and rocky plates in all aspects, increasing small-to-medium glide-snow avalanches are possible, avoid zones below glide cracks.

### Snowpack structure

Regionally wind strength is intensifying, fresh and old snow is being transported. Fresh drifts are often deposited atop soft loose old snowpack layers or, esp in shady steep terrain, atop surface hoar and are prone to triggering. Zones which are rain-impacted have a weakened snowpack. The old snowpack is well consolidated and stable. The warm ground and wet lower layers are reinforcing the gliding movement of the entire snowpack.

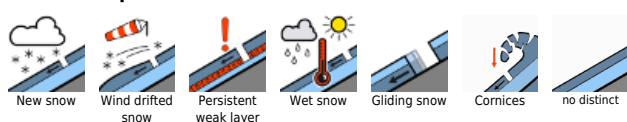
### Weather

Nocturnal hours: Widespread rainfall and snowfall from the southwest, snowfall level dropping first to 2000 m, then to 1600 m. At high altitudes: 5 cm fresh snow expected. Thursday daytime: Dry for a short while. Reduced visibility due to fog, 10-30 cm snowfall expected. At 2000 m: +1 degree at midday, -6 degrees by evening. Brisk to strong westerly winds.

### Outlook

On Friday, snow showers will taper off, it will turn increasingly sunny. Danger of wet-snow avalanches will recede. Snowdrifts and gliding snow will remain the big problems.

#### Avalanche problems



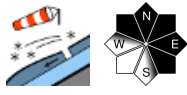
#### Danger ratings



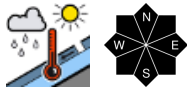
#### Expositions



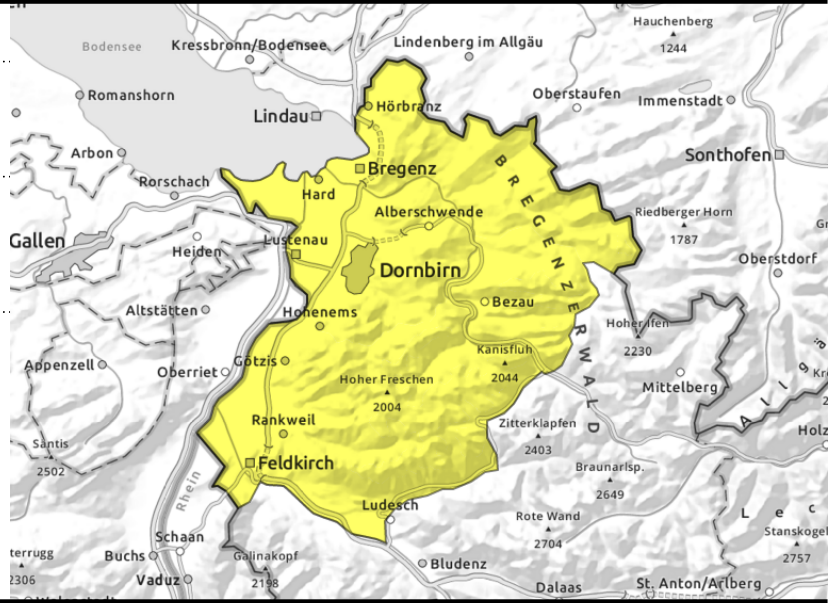
**Bregenzerwaldgebirge, Voralpenbereich**



>2000 m: behind discontinuities, wind-loaded gullies, bowls



in rain-impacted areas slides/wet avalanches, also glide-snow avalanches



**Fresh snowdrifts at high altitudes, wet avalanches due to rain**

Fresh snow and drifts are trigger-prone and the main danger at high altitudes. Danger zones occur in ridgeline terrain, behind discontinuities and in wind-loaded gullies and bowls. Small-to-medium sized avalanches can be triggered by one person. Pay attention to the risks of falling and being swept along. Where there is rain impact, wet slides and avalanches are possible. On steep grass-covered slopes and rocky plates in all aspects, increasing small-to-medium glide-snow avalanches are possible, avoid zones below glide cracks.

**Snowpack structure**

Regionally wind strength is intensifying, fresh and old snow is being transported. Fresh drifts are often deposited atop soft loose old snowpack layers or, esp in shady steep terrain, atop surface hoar and are prone to triggering. Zones which are rain-impacted have a weakened snowpack. The old snowpack is well consolidated and stable. The warm ground and wet lower layers are reinforcing the gliding movement of the entire snowpack.

**Weather**

Nocturnal hours: Widespread rainfall and snowfall from the southwest, snowfall level dropping first to 2000 m, then to 1600 m. At high altitudes: 5 cm fresh snow expected. Thursday daytime: Dry for a short while. Reduced visibility due to fog, 10-30 cm snowfall expected. At 2000 m: +1 degree at midday, -6 degrees by evening. Brisk to strong westerly winds.

**Outlook**

On Friday, snow showers will taper off, it will turn increasingly sunny. Danger of wet-snow avalanches will recede. Snowdrifts and gliding snow will remain the big problems.

Translated by Jeffrey McCabe, [www.creativtrans.com](http://www.creativtrans.com)

**Avalanche problems**



**Danger ratings**



**Expositions**

