

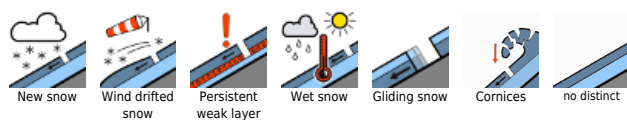
## UPDATE: Fresh snowdrift accumulations leading to rising avalanche danger, glide-snow avalanches persist



Voralpenbereich, Rätikon West, Rätikon Ost, Silvretta, Verwall, Lechquellengebirge, Lechtaler Alpen, Allgäuer Alpen, Bregenzerwaldgebirge



### Avalanche problems



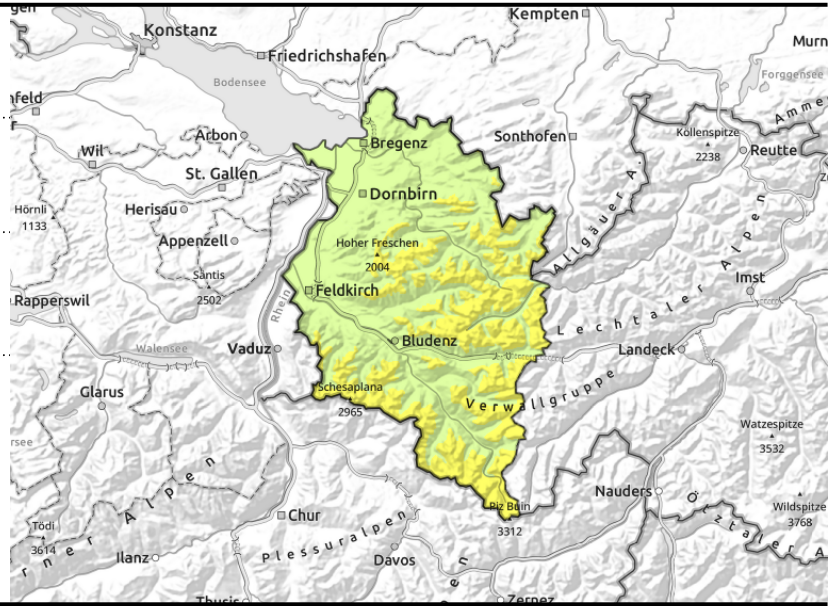
### Danger ratings



### Expositions



Voralpenbereich, Rätikon West, Rätikon Ost, Silvretta, Verwall, Lechquellengebirge, Lechtaler Alpen, Allgäuer Alpen, Bregenzerwaldgebirge



forestline



behind discontinuities, wind-loaded gullies, bowls



steep grass-covered slopes, rock plates possible

## Fresh snowdrift accumulations increasing avalanche danger. Glide-snow avalanches persist.

Fresh snowdrifts are highly prone to triggering, they are the main danger. Danger zones increase with ascending altitude in wind-impacted steep terrain, behind discontinuities, in wind-loaded gullies, bowls. Winter sports enthusiasts can trigger small-to-medium avalanches. Pay attention to the risks of falling and being swept along. Glide-snow avalanches continue to be possible on steep smooth slopes, avoid zones below glide cracks.

### Snowpack structure

Regionally wind strength is intensifying, fresh and old snow is being transported. Fresh drifts are often deposited atop soft loose old snowpack layers or, esp in shady steep terrain, atop surface hoar and are prone to triggering. The old snowpack is well consolidated and stable. The warm ground and wet lower layers are reinforcing the gliding movement of the entire snowpack, otherwise only small triggerings have been reported, including medium-sized.

### Weather

Monday daytime: Cloudy and foggy, light snowfall during the daytime hours, strong westerly winds, temperatures dropping measurably. At 2000 m: -7 to -11 degrees. Brisk to strong westerly winds.

### Outlook

Still light-to-moderate snowfall in the nocturnal hours, then quite sunny, cold and windy on Tuesday. Freshly generated snowdrifts will increase, further increasing avalanche danger.

Translated by Jeffrey McCabe, [www.creativtrans.com](http://www.creativtrans.com)

#### Avalanche problems



#### Danger ratings



#### Expositions

