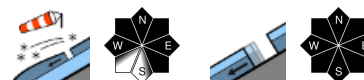


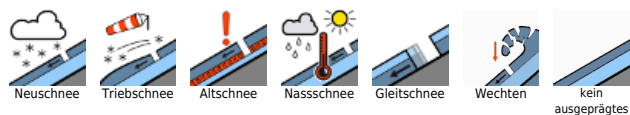
Aktualisierung: mit Neu- und frischem Tribschnee leichter Anstieg der Lawinengefahr - weiterhin auch Gleitschneelawinen



Voralpenbereich, Rätikon West, Rätikon Ost, Silvretta, Verwall, Lechquellengebirge, Lechtaler Alpen, Allgäuer Alpen, Bregenzerwaldgebirge



Lawinprobleme



Gefahrenstufen

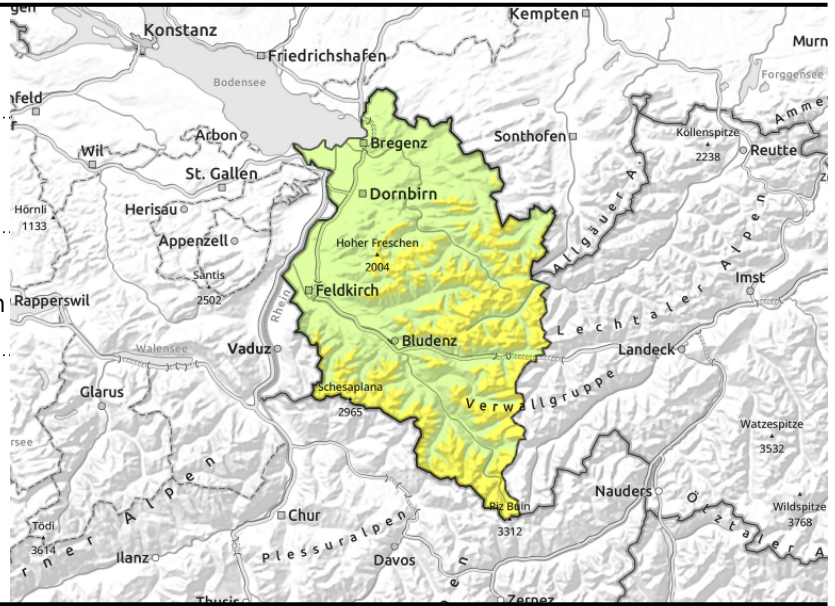


Exposition



gültig: Montag, 15.01.2024

Voralpenbereich, Rätikon West, Rätikon Ost, Silvretta, Verwall, Lechquellengebirge, Lechtaler Alpen, Allgäuer Alpen, Bregenzerwaldgebirge



Waldgrenze



hinten Geländekanten, eingewehrte Rinnen und Mulden



glatte Grashänge und felsplatten

Fresh snowdrift accumulations leading to higher avalanche danger, glide-snow avalanches persist

Fresh snowdrifts are highly prone to triggering, they are the main danger. Danger zones increase with ascending altitude in wind-impacted steep terrain, behind discontinuities, in wind-loaded gullies, bowls. Winter sports enthusiasts can trigger small-to-medium avalanches. Pay attention to the risks of falling and being swept along. Glide-snow avalanches continue to be possible on steep smooth slopes, avoid zones below glide cracks.

Schneedeckenaufbau

Regionally wind strength is intensifying, fresh and old snow is being transported. Fresh drifts are often deposited atop soft loose old snowpack layers or, esp in shady steep terrain, atop surface hoar and are prone to triggering. The old snowpack is well consolidated and stable. The warm ground and wet lower layers are reinforcing the gliding movement of the entire snowpack, otherwise only small triggerings have been reported, including medium-sized.

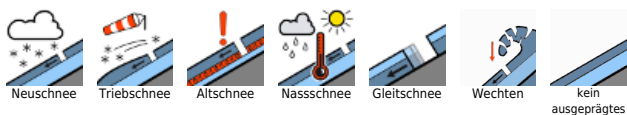
Wetter

Monday daytime: Cloudy and foggy, light snowfall during the daytime hours, strong westerly winds, temperatures dropping measurably. At 2000 m: -7 to -11 degrees. Brisk to strong westerly winds.

Tendenz

Still light-to-moderate snowfall in the nocturnal hours, then quite sunny, cold and windy on Tuesday. Freshly generated snowdrifts will increase, further increasing avalanche danger.

Lawinenprobleme



Gefahrenstufen



Exposition

