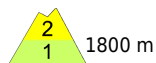
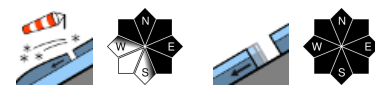


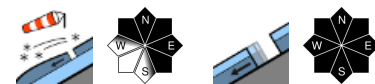
Caution urged towards glide cracks and high-altitude snowdrifts



Bregenzwaldgebirge, Voralpenbereich, Allgäuer Alpen



Lechquellengebirge, Lechtaler Alpen, Verwall, Silvretta, Rätikon Ost, Rätikon West



Avalanche problems



Danger ratings



Expositions



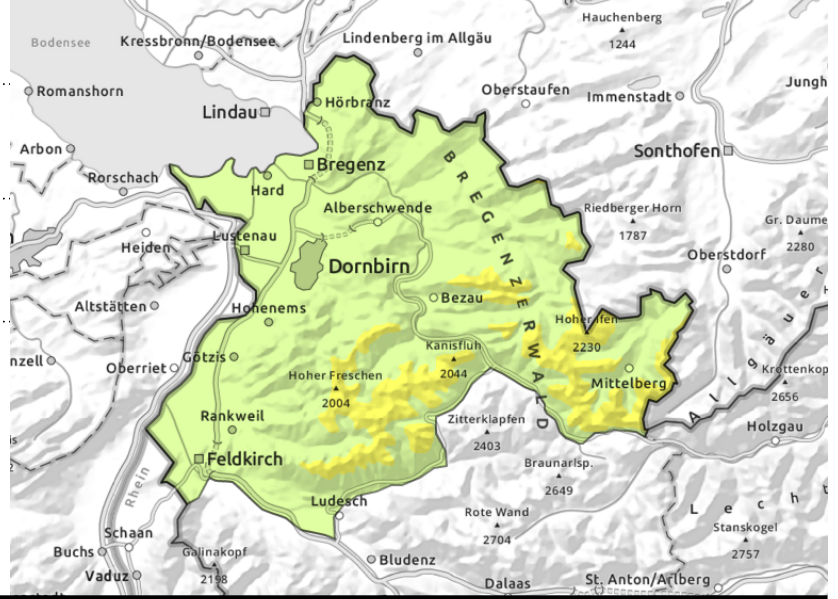
Bregenzerwaldgebirge, Voralpenbereich, Allgäuer Alpen



>1800 m on ridges, wind-loaded gullies and bowls



<2200 m steep slopes with smooth ground (grass, rocks)



Gliding snow will increase due to rainfall

Above 1800 m avalanche danger is moderate. Esp. the fresh snowdrifts are prone to triggering. Danger zones occur in ridgeline terrain, wind-loaded gullies and bowls. Frequency and size of these zones increase with ascending altitude. Small-to-medium sized avalanches can be triggered by one person. The risks of falling need consideration, esp. on hard, icy steep slopes, despite being blanketed by fresh snow. A cautious route selection is advised. Danger of glide-snow avalanches, although their activity has receded: on steep smooth slopes in all aspects below 2200 m, small-to-medium releases are possible, difficult to assess, possible at any time of day. Circumvent glide cracks.

Snowpack structure

Fresh snow and drifts lie deposited on a stable old snowpack by and large. Bonding is often poor to the icy, encrusted (on north-facing slopes often loose and faceted) snowpack, worsening with ascending altitude. At intermediate altitudes the snowpack is often moist down to the ground. The weight-load of the fresh snow reinforces the process of gliding over smooth ground, although this activity has receded. Only little snow on the ground in Prealps.

Weather

Nocturnal hours: Extensive cloud cover but it will remain dry. Tuesday daytime: Extensive cloud cover will veil the peaks in fog, light snowfall is possible esp. in the northern mountain ranges from Bregenzerwald to Arlberg. Snowfall level 1500-1800 m. Mostly dry around the Montafon ranges. At 2000 m: 0 degrees, and rising. Often strong westerly winds.

Outlook

On Wednesday, dry air and intermittent sunshine. At all altitudes mild, +1 degree at 2000 m. High-altitude winds will be strong from the west. Avalanche danger levels are not expected to change significantly.

Avalanche problems



Danger ratings



Expositions



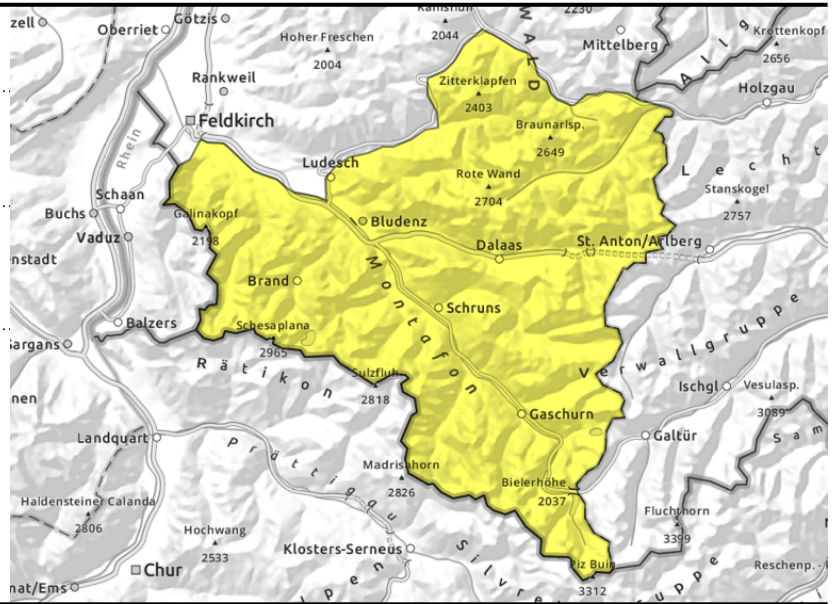
Lechquellengebirge, Lechtaler Alpen, Verwall, Silvretta, Rätikon Ost, Rätikon West



>1800 m ridgeline slopes, wind-loaded bullies and bowls



<2400 m steep slopes with smooth ground (grass, rocks)



Trigger-sensitive snowdrifts, and slightly increasing avalanche danger due to rainfall.

Avalanche danger is moderate. Esp. the fresh snowdrifts are prone to triggering. Danger zones occur in ridgeline terrain, wind-loaded gullies and bowls. Frequency and size of these zones increase with ascending altitude. Small-to-medium sized avalanches can be triggered by one person. The risks of falling need consideration, esp. on hard, icy steep slopes, despite being blanketed by fresh snow. A cautious route selection is advised. Danger of glide-snow avalanches, although their activity has receded: on steep smooth slopes in all aspects below 2200 m, small-to-medium releases are possible, difficult to assess, possible at any time of day. Circumvent glide cracks.

Snowpack structure

Fresh snow and drifts lie deposited on a stable old snowpack by and large. Bonding is often poor to the icy, encrusted (on north-facing slopes often loose and faceted) snowpack, worsening with ascending altitude. At intermediate altitudes the snowpack is often moist down to the ground, reinforcing the gliding movements of the snowpack. Due to rainfall, this activity can increase.

Weather

Nocturnal hours: Extensive cloud cover but it will remain dry. Tuesday daytime: Extensive cloud cover will veil the peaks in fog, light snowfall is possible esp. in the northern mountain ranges from Bregenzerwald to Arberg. Snowfall level 1500-1800 m. Mostly dry around the Montafon ranges. At 2000 m: 0 degrees, and rising. Often strong westerly winds.

Outlook

On Wednesday, dry air and intermittent sunshine. At all altitudes mild, +1 degree at 2000 m. High-altitude winds will be strong from the west. Avalanche danger levels are not expected to change significantly.

Translated by Jeffrey McCabe, www.creativtrans.com

Avalanche problems



Danger ratings



Expositions

