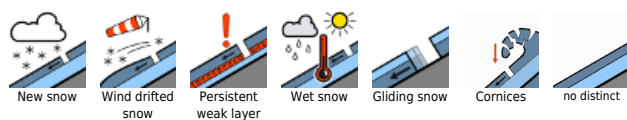


Slightly increasing avalanche danger due to some fresh snow and wind

	1800 m Bregenzerwaldgebirge, Voralpenbereich, Allgäuer Alpen	
	Lechquellengebirge, Lechtaler Alpen, Verwall, Silvretta, Rätikon Ost, Rätikon West	

Avalanche problems



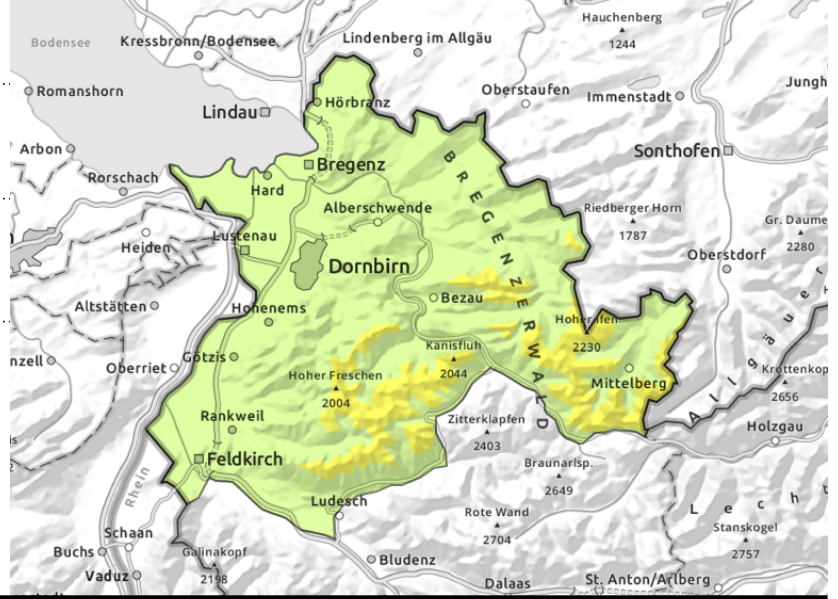
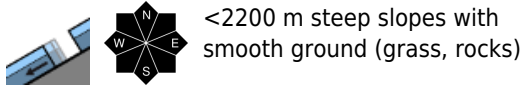
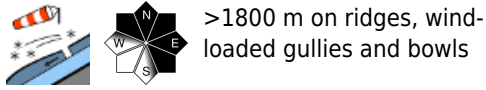
Danger ratings



Expositions



Bregenzerwaldgebirge, Voralpenbereich, Allgäuer Alpen



Fresh snow and snowdrifts: slightly increasing avalanche danger

Above 1800 m avalanche danger is moderate. Esp. the fresh fallen snow is prone to triggering. Danger zones occur in ridgeline terrain, wind-loaded gullies and bowls. Frequency and size of these zones increase with ascending altitude. Small-to-medium sized avalanches can be triggered by one person. The risks of falling need consideration, esp. on hard, icy steep slopes, despite being blanketed by fresh snow. A cautious route selection is advised. Danger of glide-snow avalanches, although their activity has receded: on steep smooth slopes in all aspects below 2200 m, small-to-medium releases are possible, difficult to assess, possible at any time of day. Circumvent glide cracks.

Snowpack structure

Fresh snow and drifts lie deposited on a stable old snowpack by and large. Bonding is often poor to the icy, encrusted (on north-facing slopes often loose and faceted) snowpack, worsening with ascending altitude. At intermediate altitudes the snowpack is often moist down to the ground. The weight-load of the fresh snow reinforces the process of gliding over smooth ground, although this activity has receded. Only little snow on the ground in Prealps.

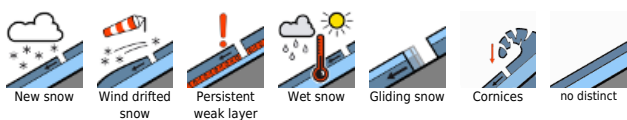
Weather

Nocturnal hours: Above 700-1100 m: 10-20 cm of fresh snow. Monday daytime: Dispersed clouds, a bit of sunshine, but getting cloudier as the day progresses, with diffuse light conditions. At 2000 m: -5 degrees, dropping to -5 degrees. Brisk westerly winds.

Outlook

Variable conditions are approaching, lots of clouds, wind and intermittent precipitation. Snow above 1500-1800 m. The danger of dry-snow avalanches is not expected to change significantly. Danger of small glide-snow avalanches persists.

Avalanche problems



Danger ratings



Expositions



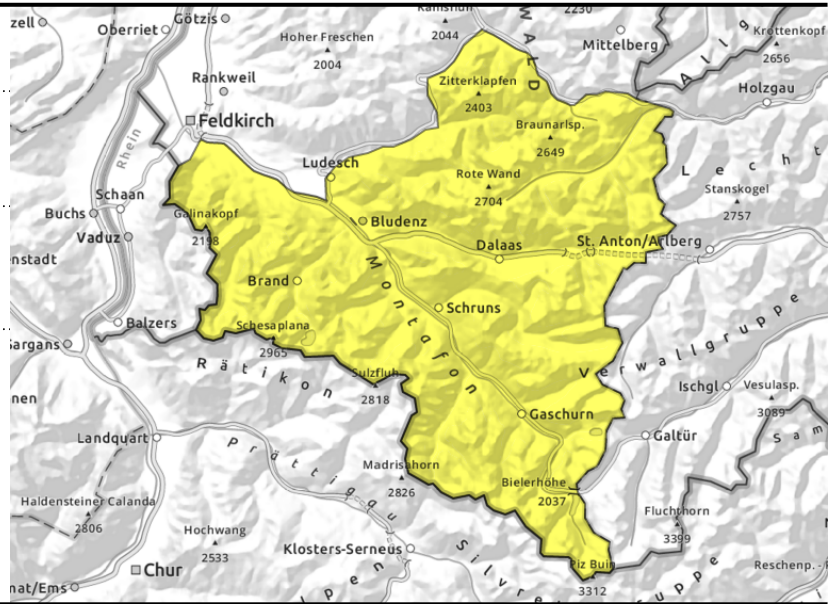
Lechquellengebirge, Lechtaler Alpen, Verwall, Silvretta, Rätikon Ost, Rätikon West



>1800 m ridgeline slopes, wind-loaded gullies and bowls



<2400 m steep slopes with smooth ground (grass, rocks)



Fresh snow and snowdrifts: slightly increasing avalanche danger. Glide-snow avalanches persist.

Avalanche danger is moderate. Esp. the fresh fallen snow is prone to triggering. Danger zones occur in ridgeline terrain, wind-loaded gullies and bowls. Frequency and size of these zones increase with ascending altitude. Small-to-medium sized avalanches can be triggered by one person. The risks of falling need consideration, esp. on hard, icy steep slopes, despite being blanketed by fresh snow. A cautious route selection is advised. Danger of glide-snow avalanches, although their activity has receded: on steep smooth slopes in all aspects below 2200 m, small-to-medium releases are possible, difficult to assess, possible at any time of day. Circumvent glide cracks.

Snowpack structure

Fresh snow and drifts lie deposited on a stable old snowpack by and large. Bonding is often poor to the icy, encrusted (on north-facing slopes often loose and faceted) snowpack, worsening with ascending altitude. At intermediate altitudes the snowpack is often moist down to the ground. The weight-load of the fresh snow reinforces the process of gliding over smooth ground, although this activity has receded.

Weather

Nocturnal hours: Above 700-1100 m: 10-20 cm of fresh snow. Monday daytime: Dispersed clouds, a bit of sunshine, but getting cloudier as the day progresses, with diffuse light conditions. At 2000 m: -5 degrees, dropping to -5 degrees. Brisk westerly winds.

Outlook

Variable conditions are approaching, lots of clouds, wind and intermittent precipitation. Snow above 1500-1800 m. The danger of dry-snow avalanches is not expected to change significantly. Danger of small glide-snow avalanches persists.

Translated by Jeffrey McCabe, www.creativtrans.com

Avalanche problems



Danger ratings



Expositions

