

Moderate danger of glide-snow avalanches, otherwise favourable conditions

	Bregenzwaldgebirge		
	2400 m Lechquellengebirge, Lechtaler Alpen, Verwall, Silvretta, Rätikon Ost, Rätikon West, Allgäuer Alpen		
	Voralpenbereich		

Avalanche problems

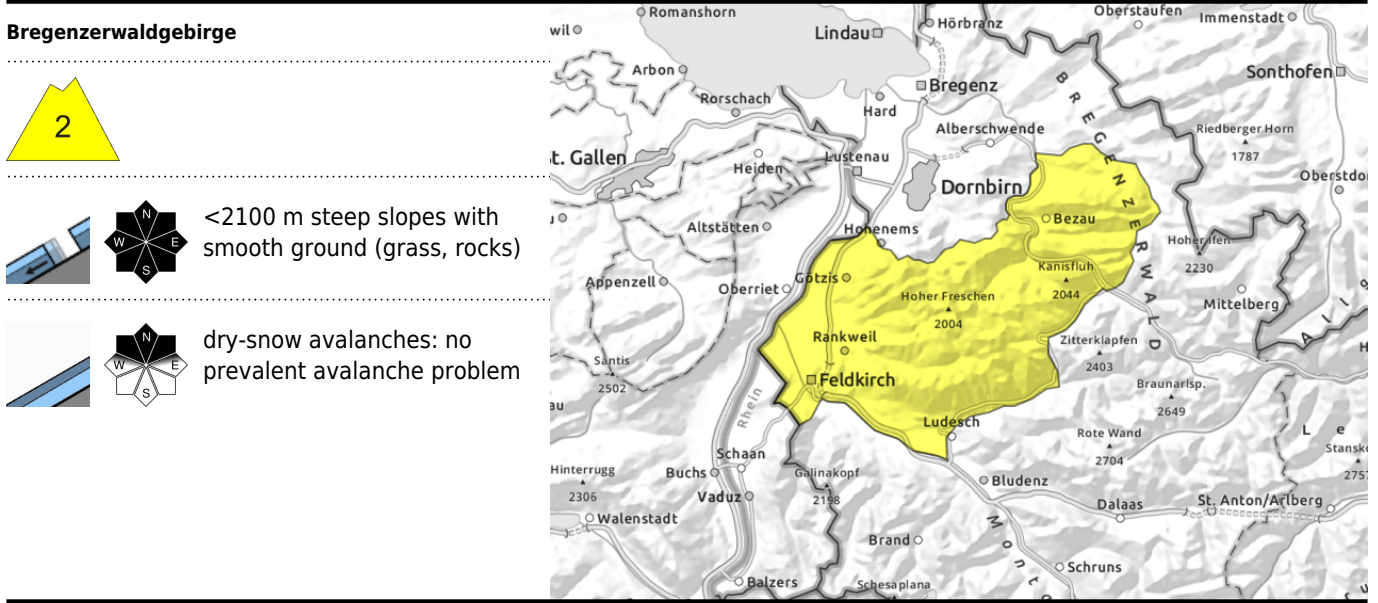


Danger ratings



Expositions





Moderate danger of glide-snow avalanches, otherwise favourable situation

Avalanche danger is moderate. Main problem: gliding snow avalanches. On steep smooth slopes in all aspects below 2100 m, medium glide-snow avalanches are possible, indicated by glide cracks. No current risk of dry-snow avalanches, at most superficial layers or older drifts could trigger, usually only with large additional loading. A cautious route selection is advised. Risks of falling need consideration.

Snowpack structure

The snowpack is well consolidated and stable by and large. The melt-freeze crust is capable of bearing loads up to high altitudes. Many surfaces are wind-impacted or icy from the rainfall. Crests and ridges are utterly windblown, gullies and bowls and zones behind protruberances are filled with older hardened snowdrifts. At intermediate altitudes the snowpack is often moist down to the ground. The weight-load of the fresh snow reinforces the process of gliding over smooth ground.

Weather

Nocturnal hours: Often cloudy skies, little precipitation in the northern regions. Further south, few clouds, generally dry. Saturday daytime: A sunny and mild day. At 2000 m: +1 degree. Brisk W/SW winds, slackening off later in the day.

Outlook

Saturday will be very sunny initially. Clouds will move in during the day. In foehn-exposed lanes strong winds will arise. The danger of dry-snow avalanches will not change. Danger of glide-snow avalanches persists.

Avalanche problems



Danger ratings



Expositions

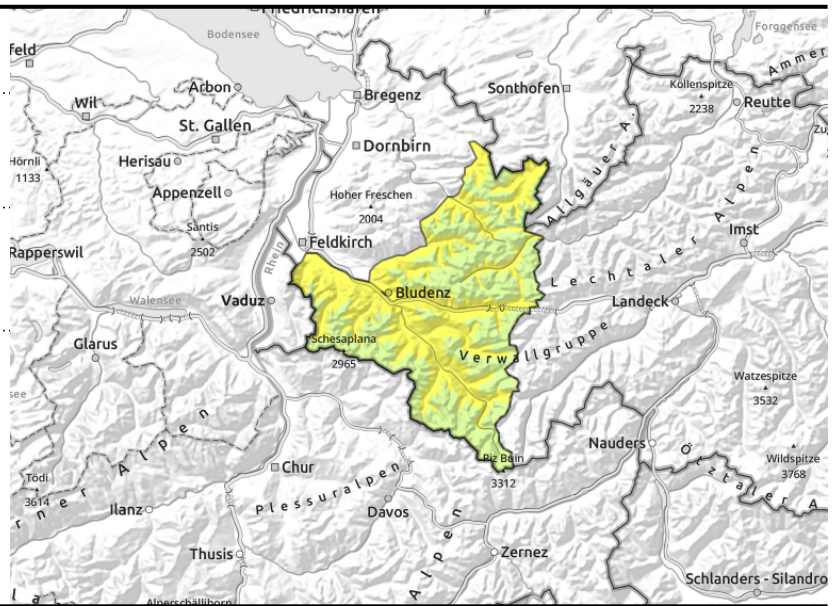


Lechquellengebirge, Lechtaler Alpen, Verwall, Silvretta, Rätikon Ost, Rätikon West, Allgäuer Alpen



<2400 m steep slopes with smooth ground (grass, rocks)

dry-snow avalanches: no prevalent avalanche problem



Glide-snow avalanches persist, mostly favourable conditions

Avalanche danger is moderate due to gliding snow. On steep smooth slopes in all aspects above 2400 m, medium glide-snow avalanches are possible, indicated by glide cracks (should be circumvented). No current risk of dry-snow avalanches, at most superficial layers or older drifts could trigger, usually only with large additional loading. A cautious route selection is advised, the risks of falling also need to be taken into consideration on hard, icy slopes.

Snowpack structure

The snowpack is well consolidated and stable by and large. The melt-freeze crust is capable of bearing loads up to high altitudes. Many surfaces are wind-impacted or icy from the rainfall. Crests and ridges are utterly windblown, gullies and bowls and zones behind protruberances are filled with older hardened snowdrifts. At intermediate altitudes the snowpack is often moist down to the ground. The weight-load of the fresh snow reinforces the process of gliding over smooth ground.

Weather

Nocturnal hours: Often cloudy skies, little precipitation in the northern regions. Further south, few clouds, generally dry. Saturday daytime: A sunny and mild day. At 2000 m: +1 degree. Brisk W/SW winds, slackening off later in the day.

Outlook

Saturday will be very sunny initially. Clouds will move in during the day. In foehn-exposed lanes strong winds will arise. The danger of dry-snow avalanches will not change. Danger of glide-snow avalanches persists.

Avalanche problems



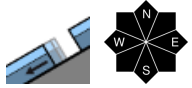
Danger ratings



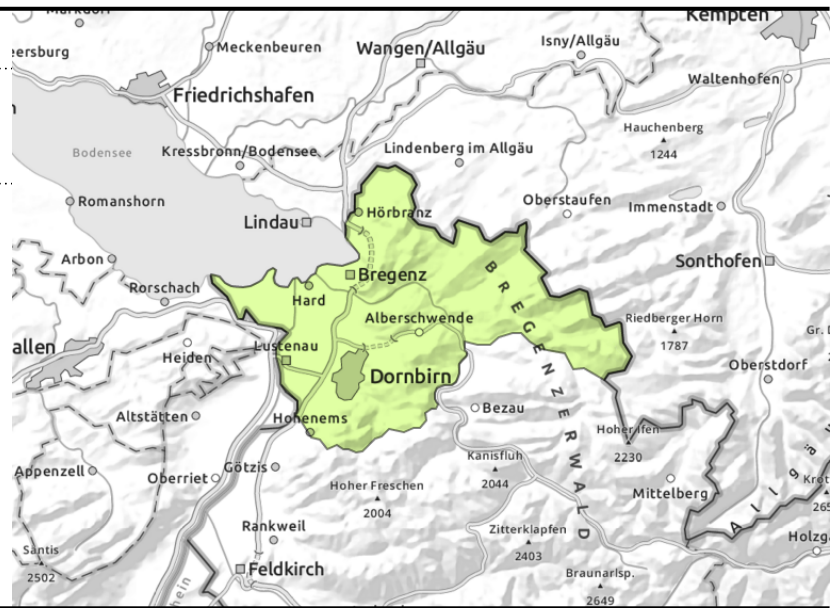
Expositions



Voralpenbereich



isolated on smooth, steep grass-covered slopes



Little snow, isolated glide-snow avalanches

Avalanche danger is low. On steep smooth slopes in all aspects, small glide-snow avalanches are possible in zones which have not yet discharged. Glide cracks should be circumvented. No prevalent problem for dry-snow avalanches. Small avalanches can be triggered in extremely steep terrain, mostly by large additional loading. Apart from the danger of being buried in snow, the risks of being forced to take a fall need to be taken into consideration. A cautious route selection is advised.

Snowpack structure

Little snow on the ground. Often the crust is capable of bearing loads, but softens up during the course of the day. Many surfaces are wind-hardened or icy. The snowpacks up to intermediate altitudes is moist down to the ground, which enhances the snowpack gliding downhill over smooth ground surfaces.

Weather

Nocturnal hours: Often cloudy skies, little precipitation in the northern regions. Further south, few clouds, generally dry. Saturday daytime: A sunny and mild day. At 2000 m: +1 degree. Brisk W/SW winds, slackening off later in the day.

Outlook

Saturday will be very sunny to start with. Clouds will move in during the day. In foehn-exposed lanes strong winds will arise. The danger of dry-snow avalanches will not change. Danger of glide-snow avalanches persists.

Translated by Jeffrey McCabe, www.creativtrans.com

Avalanche problems



Danger ratings



Expositions

