

Glide-snow avalanches still dangerous, otherwise mostly favourable conditions

	Bregenzwaldgebirge	
	2400 m Lechquellengebirge, Lechtaler Alpen, Verwall, Silvretta, Rätikon Ost, Rätikon West, Allgäuer Alpen	
	Voralpenbereich	

Avalanche problems

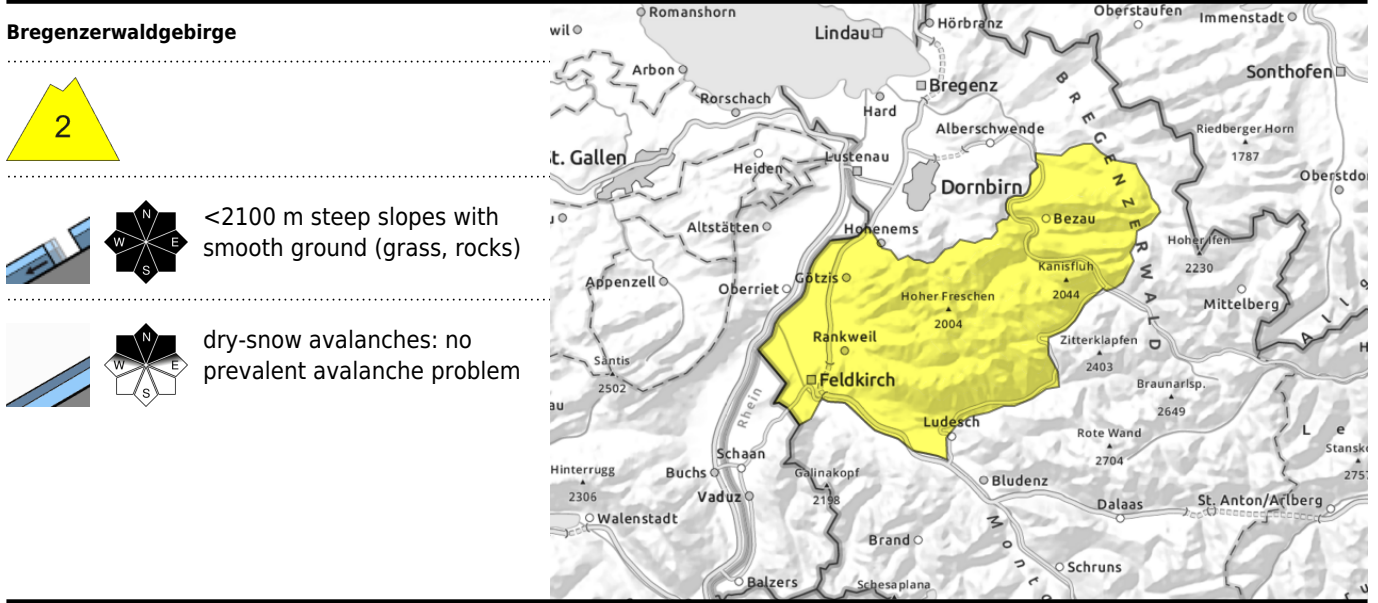


Danger ratings



Expositions





Moderate danger of glide-snow avalanches, otherwise favourable situation

Avalanche danger is moderate. Main problem: gliding snow avalanches. On steep smooth slopes in all aspects below 2100 m, medium glide-snow avalanches are possible, indicated by glide cracks. No current risk of dry-snow avalanches, at most superficial layers or older drifts could trigger, usually only with large additional loading. A cautious route selection is advised. Risks of falling need consideration.

Snowpack structure

Snow is irregularly distributed due to storm-strength winds. Crests and ridges are utterly windblown, gullies and bowls and zones behind protruberances are filled to the brim with drifted snow. Older drifts are often hardened, many surfaced are wind-compacted. The drifts are bonding well with the snowpack beneath them. Fresher drifts have weak intermediate layers, sometimes with graupel, and are prone to triggering. The fresh snow has settled well. At intermediate altitudes the snowpack is often moist down to the ground. The weight-load of the fresh snow reinforces the process of gliding over smooth ground.

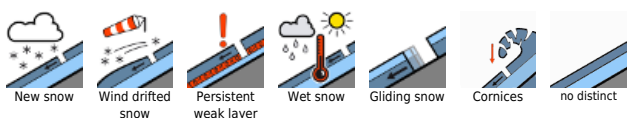
Weather

Nocturnal hours: High-altitude clouds moving in from the west. Friday daytime: A sunny and mild day. At 2000 m: +2 degrees. Brisk to strong W/SW winds.

Outlook

Saturday will be very sunny. The danger of dry-snow avalanches will not change. Danger of glide-snow avalanches will persist.

Avalanche problems



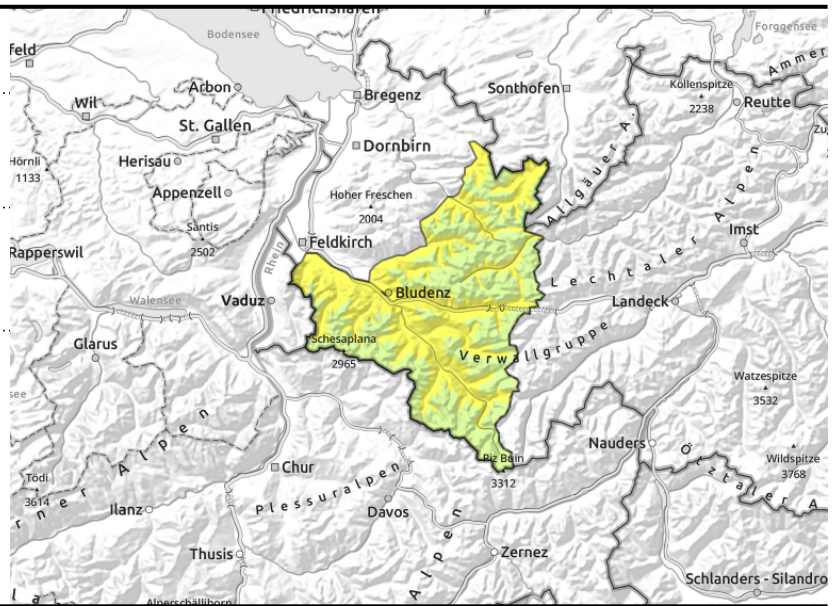
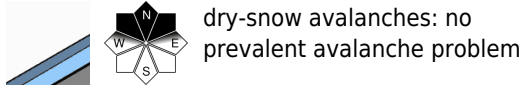
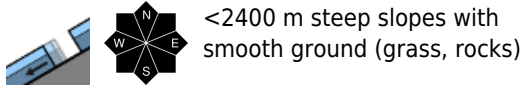
Danger ratings



Expositions



Lechquellengebirge, Lechtaler Alpen, Verwall, Silvretta, Rätikon Ost, Rätikon West, Allgäuer Alpen



Avalanche danger is moderate due to gliding snow. On steep smooth slopes in all aspects above 2400 m, medium glide-snow avalanches are possible, indicated by glide cracks. No current risk of dry-snow avalanches, at most superficial layers or older drifts could trigger, usually only with large additional loading. A cautious route selection is advised.

Snowpack structure

Snow is irregularly distributed due to storm-strength winds. Crests and ridges are utterly windblown, gullies and bowls and zones behind protruberances are filled to the brim with drifted snow. Older drifts are often hardened, many surfaced are wind-compacted. The drifts are bonding well with the snowpack beneath them. Fresher drifts have weak intermediate layers, sometimes with graupel, and are prone to triggering. The fresh snow has settled well. At intermediate altitudes the snowpack is often moist down to the ground. The weight-load of the fresh snow reinforces the process of gliding over smooth ground.

Weather

Nocturnal hours: High-altitude clouds moving in from the west. Friday daytime: A sunny and mild day. At 2000 m: +2 degrees. Brisk to strong W/SW winds.

Outlook

Saturday will be very sunny. The danger of dry-snow avalanches will not change. Danger of glide-snow avalanches will persist.

Avalanche problems



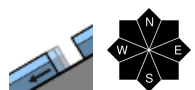
Danger ratings



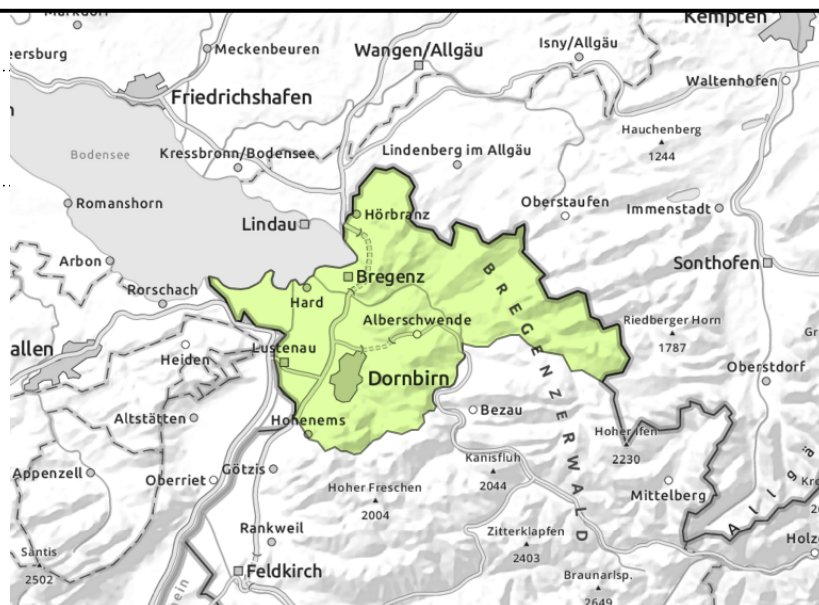
Expositions



Voralpenbereich



isolated on smooth, steep grass-covered slopes



Little snow, isolated glide-snow avalanches

Avalanche danger is low. On steep smooth slopes in all aspects, small glide-snow avalanches are possible in zones which have not yet discharged. Glide cracks should be circumvented. No prevalent problem for dry-snow avalanches. Small avalanches can be triggered in extremely steep terrain, mostly by large additional loading. Apart from the danger of being buried in snow, the risks of being forced to take a fall need to be taken into consideration. A cautious route selection is advised.

Snowpack structure

Little snow on the ground. Often the crust is capable of bearing loads, but softens up during the course of the day. Many surfaces are wind-hardened or icy. The snowpacks up to intermediate altitudes is moist down to the ground, which enhances the snowpack gliding downhill over smooth ground surfaces.

Weather

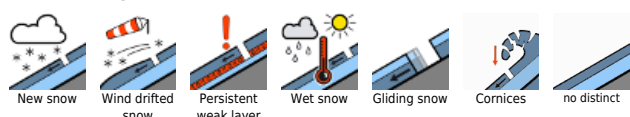
Nocturnal hours: High-altitude clouds moving in from the west. Friday daytime: A sunny and mild day. At 2000 m: +2 degrees. Brisk to strong W/SW winds.

Outlook

Saturday will be very sunny. The danger of dry-snow avalanches will not change. Danger of glide-snow avalanches will persist.

Translated by Jeffrey McCabe, www.creativtrans.com

Avalanche problems



Danger ratings



Expositions

