

Glide-snow avalanches persist. Snowdrift accumulations at some high altitude spots.

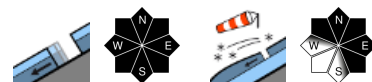


Voralpenbereich, Bregenzerwaldgebirge, Rätikon West, Allgäuer Alpen



2400 m

Lechquellengebirge, Lechtaler Alpen, Verwall, Silvretta, Rätikon Ost



Avalanche problems



Danger ratings



Expositions



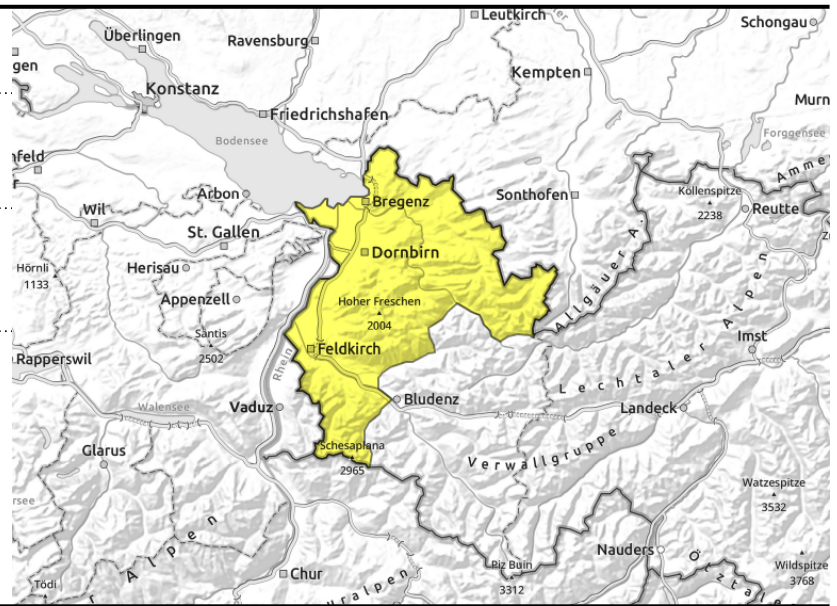
Voralpenbereich, Bregenzerwaldgebirge, Rätikon West, Allgäuer Alpen



<2400 m steep slopes with smooth ground (grass, rocks)



>2000 m no prevalent avalanche problem



Main problem: glide-snow avalanches

Avalanche danger is moderate. Main problem: gliding snow. On steep smooth slopes in all aspects above 2400 m, medium glide-snow avalanches are possible, indicated by glide cracks. No current risk of dry-snow avalanches, at most superficial layers or older drifts could trigger, usually only with large additional loading. A cautious route selection is advised. Caution near cornices, which could break. On sunny slopes, mostly small loose-snow avalanches can be expected if there is solar radiation.

Snowpack structure

Snow was irregularly distributed during the last few days due to storm-strength winds. Crests and ridges are utterly windblown, gullies and bowls and zones behind protruberances are filled to the brim with drifted snow. Older drifts are often hardened, many surfaced are wind-compacted. The drifts are bonding well with the snowpack beneath them. Fresher drifts have weak intermediate layers, sometimes with graupel, and are prone to triggering. The fresh snow has settled well. At intermediate altitudes the snowpack is often moist down to the ground. The weight-load of the fresh snow reinforces the process of gliding over smooth ground.

Weather

Nocturnal hours: Clear skies, dry, good outgoing radiation. Tuesday daytime: A sunny and mild day, merely thin clouds above summit level. At 2000 m: +1 to +4 degrees. Moderate to strong westerly winds.

Outlook

The next few days will be sunny and mild. Danger of dry-snow slab avalanches will diminish. Danger of glide-snow avalanches will persist.

Avalanche problems



Danger ratings



Expositions

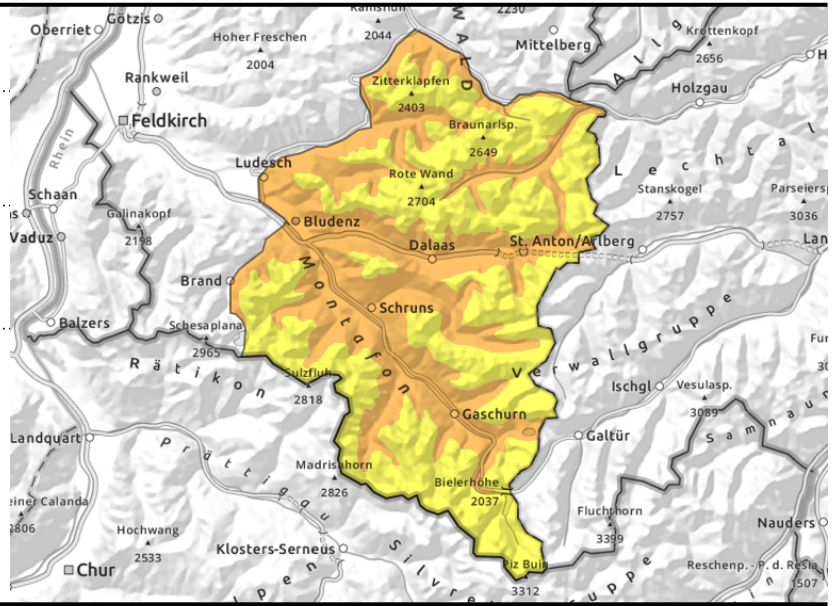


Lechquellengebirge, Lechtaler Alpen, Verwall, Silvretta, Rätikon Ost



<2400 m steep slopes with smooth ground (grass, rocks)

>2200 m small fresh drifts and blanketed older drifts



Glide-snow avalanches persist. Snowdrift accumulations at some high altitude spots.

Avalanche danger is considerable. Main problem: gliding snow. On steep smooth slopes in all aspects above 2400 m, medium glide-snow avalanches are possible, indicated by glide cracks. No current risk of dry-snow avalanches, at most superficial layers or older drifts could trigger, usually only with large additional loading. A cautious route selection is advised. Caution near cornices, which could break. On sunny slopes, mostly small loose-snow avalanches can be expected if there is solar radiation.

Snowpack structure

Snow was irregularly distributed during the last few days due to storm-strength winds. Crests and ridges are utterly windblown, gullies and bowls and zones behind protruberances are filled to the brim with drifted snow. Older drifts are often hardened, many surfaced are wind-compacted. The drifts are bonding well with the snowpack beneath them. Fresher drifts have weak intermediate layers, sometimes with graupel, and are prone to triggering. The fresh snow has settled well. At intermediate altitudes the snowpack is often moist down to the ground. The weight-load of the fresh snow reinforces the process of gliding over smooth ground.

Weather

Nocturnal hours: Clear skies, dry, good outgoing radiation. Tuesday daytime: A sunny and mild day, merely thin clouds above summit level. At 2000 m: +1 to +4 degrees. Moderate to strong westerly winds.

Outlook

The next few days will be sunny and mild. Danger of dry-snow slab avalanches will diminish. Danger of glide-snow avalanches will persist.

Translated by Jeffrey McCabe, www.creativtrans.com

Avalanche problems



Danger ratings



Expositions

