

Circumvent snowdrift accumulations. Increasing glide-snow avalanches expected.



Voralpenbereich, Bregenzeraldgebirge, Rätikon West, Rätikon Ost, Allgäuer Alpen



2200 m

Lechquellengebirge, Lechtaler Alpen, Verwall, Silvretta



Avalanche problems



Danger ratings



Expositions



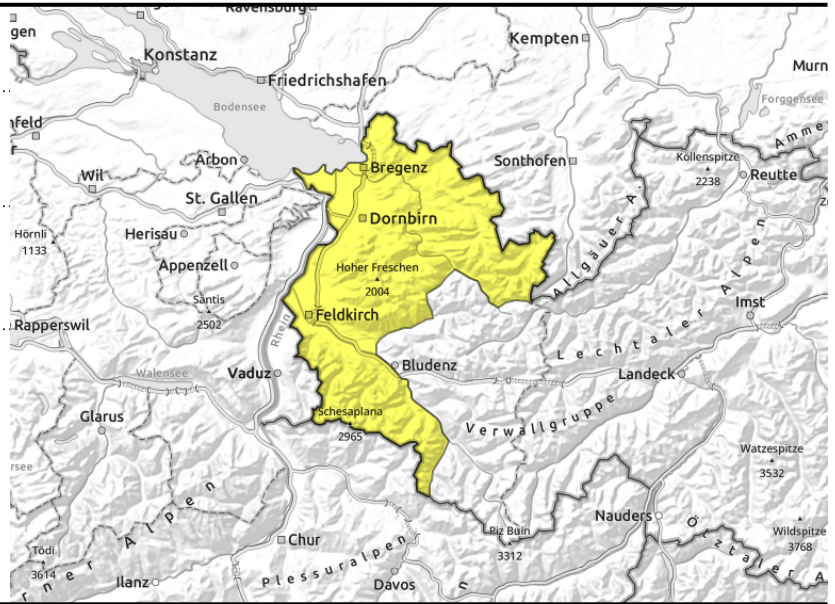
Voralpenbereich, Bregenzerwaldgebirge, Rätikon West, Rätikon Ost, Allgäuer Alpen



>2000 m fresh drifts and blanketed older drifts



<2400 m wet snow: due to nocturnal rainfall, moist slides and avalanches. gliding snow: steep slopes with smooth ground (grass, rocks)



The snowdrifts are prone to triggering. Glide-snow avalanches continue.

Avalanche danger is moderate. Main problem: snowdrift accumulations. Danger zones occur on wind-loaded steep slopes near to and distant from ridges in all aspects, and at entries into gullies and bowls. The snowdrift accumulations are prone to triggering in places, large avalanches can be triggered even by 1 person. Older snowdrifts require large additional loading. A cautious route selection is advised. Caution also urged near cornices due to possible breakage. On steep smooth slopes in all aspects below 2400 m, medium-to-large sized glide-snow avalanches are possible. Glide cracks are indicators of potential danger. On sunny slopes, mostly small loose-snow avalanches can be expected if there is solar radiation.

Snowpack structure

Snow was irregularly distributed during the last few days due to storm-strength winds. Crests and ridges are utterly windblown, gullies and bowls and zones behind protruberances are filled to the brim with drifted snow. Older drifts are often hardened, many surfaced are wind-compacted. The drifts are bonding well with the snowpack beneath them. Fresher drifts have weak intermediate layers, sometimes with graupel, and are prone to triggering. The fresh snow has settled well. At intermediate altitudes the snowpack is often moist down to the ground. The weight-load of the fresh snow reinforces the process of gliding over smooth ground.

Weather

Nocturnal hours: Light rainfall in the early part of the night above 2200 m as light snowfall, coming to an end by midnight. Thereafter the clouds will disperse. Monday daytime: A sunny and mild day, but still windy. Zero-degree level at 3000 m. At 2000 m: +2 to +6 degrees. Strong westerly winds.

Outlook

The next few days will be sunny and mild. Danger of dry-snow slab avalanches will diminish. Danger of glide-snow avalanches will persist.

Avalanche problems



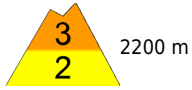
Danger ratings



Expositions



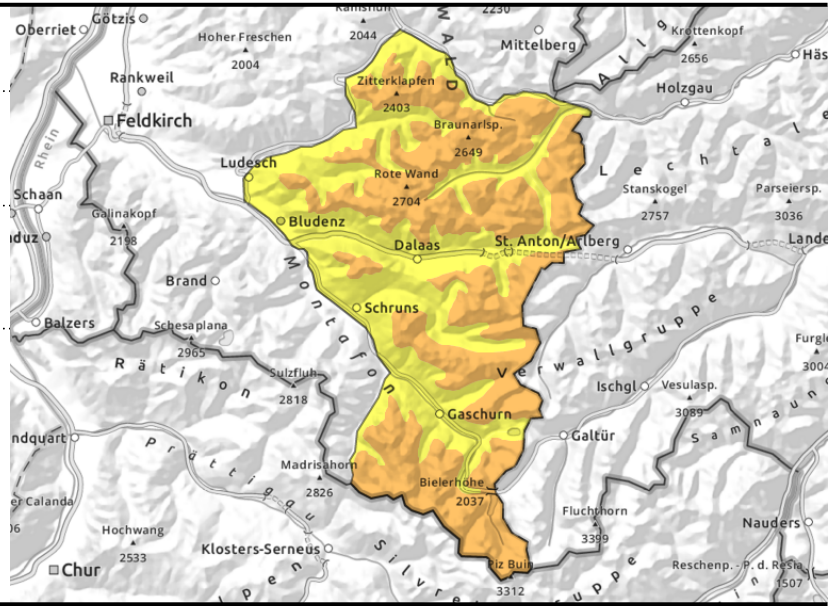
Lechquellengebirge, Lechtaler Alpen, Verwall, Silvretta



>2000 m fresh drifts and blanketed older drifts



<2400 m wet snow: due to nocturnal rainfall, moist slides and avalanches. gliding snow: steep slopes with smooth ground (grass, rocks)



The snowdrifts are prone to triggering. Glide-snow avalanches continue.

Avalanche danger is moderate. Main problem: snowdrift accumulations. Danger zones occur on wind-loaded steep slopes near to and distant from ridges in all aspects, and at entries into gullies and bowls. The snowdrift accumulations are prone to triggering in places, large avalanches can be triggered even by 1 person. Older snowdrifts require large additional loading. A cautious route selection is advised. Caution also urged near cornices due to possible breakage. On steep smooth slopes in all aspects below 2400 m, medium-to-large sized glide-snow avalanches are possible. Glide cracks are indicators of potential danger. On sunny slopes, mostly small loose-snow avalanches can be expected if there is solar radiation. Backcountry tours require experience in assessing risks on-site and much caution.

Snowpack structure

Snow was irregularly distributed during the last few days due to storm-strength winds. Crests and ridges are utterly windblown, gullies and bowls and zones behind protruberances are filled to the brim with drifted snow. Older drifts are often hardened, many surfaced are wind-compacted. The drifts are bonding well with the snowpack beneath them. Fresher drifts have weak intermediate layers, sometimes with graupel, and are prone to triggering. The fresh snow has settled well. At intermediate altitudes the snowpack is often moist down to the ground. The weight-load of the fresh snow reinforces the process of gliding over smooth ground.

Weather

Nocturnal hours: Light rainfall in the early part of the night above 2200 m as light snowfall, coming to an end by midnight. Thereafter the clouds will disperse. Monday daytime: A sunny and mild day, but still windy. Zero-degree level at 3000 m. At 2000 m: +2 to +6 degrees. Strong westerly winds.

Outlook

The next few days will be sunny and mild. Danger of dry-snow slab avalanches will diminish. Danger of glide-snow avalanches will persist.

Translated by Jeffrey McCabe, www.creativtrans.com

Avalanche problems



Danger ratings



Expositions

