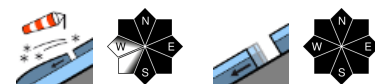


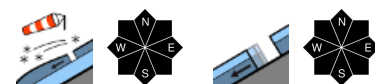
Increasing daytime avalanche danger due to fresh snow and wind



Voralpenbereich, Bregenerwaldgebirge



Lechtallengebirge, Lechtaler Alpen, Verwall, Silvretta, Rätikon Ost, Rätikon West, Allgäuer Alpen



Avalanche problems



Danger ratings



Expositions



Voralpenbereich, Bregenzerwaldgebirge



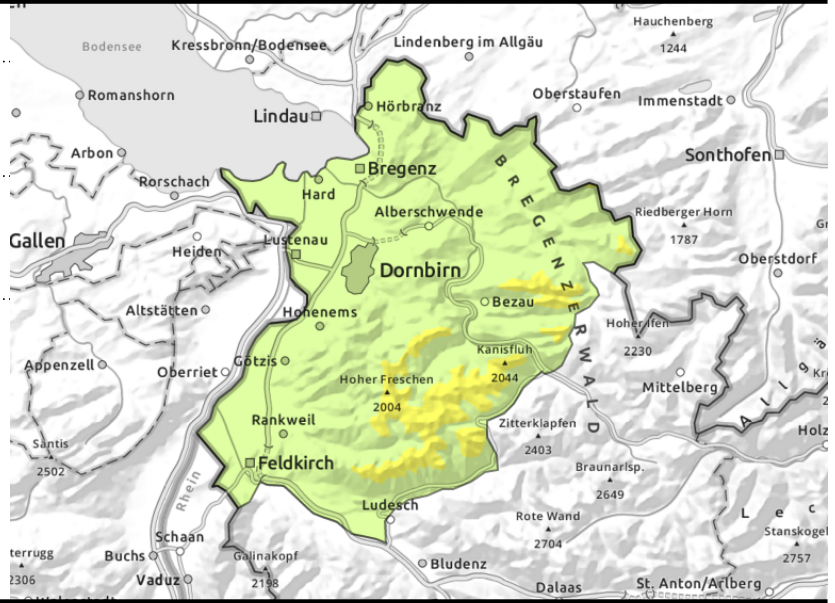
forestline



fresh drifts increase with ascending altitude



steep grassy slopes, hillsides



Rising danger due to fresh snow and winds. Glide-snow avalanches continue.

Fresh snow and fresh snowdrifts are prone to triggering. Size and frequency of drifts increase as the day progresses and with ascending altitude. Older blanketed drifted masses can be triggered as small-to-medium slab avalanches by winter sports enthusiasts. Danger zones occur esp. on shady steep slopes in E/S aspects. Particularly on steep, smooth grassy slopes in all aspects, medium-sized glide-snow avalanches continue to be possible. Where there has been rain impact the danger is increasing.

Snowpack structure

Due to fresh snow and wind, fresh snowdrifts are accumulating at high altitudes, bonding poorly with the old snowpack surface. The uppermost layers were still powdery at high altitudes, particularly on shady slopes, partly with surface hoar, now covered by fresh snow. On sunny slopes a partly breakable partly capable-of-bearing-loads melt-freeze crust has been blanketed. At intermediate altitudes the snowpack is often moist down to the ground. Result: gliding snow and glide-snow avalanches.

Weather

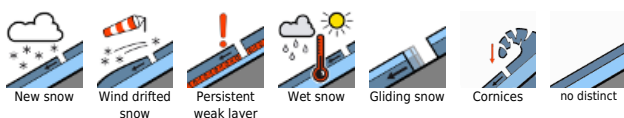
Nocturnal hours: Partly to heavily overcast skies, esp. in northern regions (snowfall over 700 m).

Thursday daytime: Hardly any precipitation in the morning. As of midday, snowfall/rainfall more frequent and heavy. Snowfall level will ascend to 1500 m. By evening: 10 cm of fresh snow expected. At 2000 m: -6 to -2 degrees. Strong-to-stormy W/NW winds.

Outlook

Heavy fresh snowfall, storm winds, gale-strength gusts: avalanche danger will rise markedly as of intermediate altitudes.

Avalanche problems



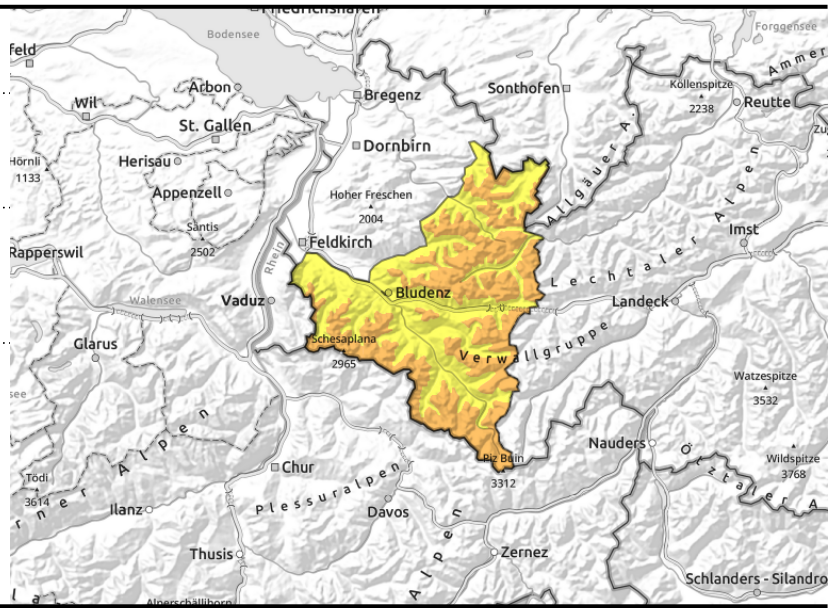
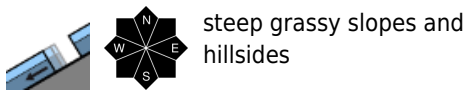
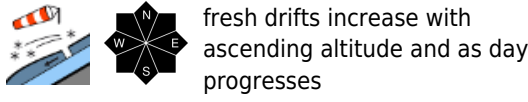
Danger ratings



Expositions



Lechquellengebirge, Lechtaler Alpen, Verwall, Silvretta, Rätikon Ost, Rätikon West, Allgäuer Alpen



Fresh drifts are prone to triggering. Continuing glide-snow avalanches.

Fresh snow and fresh snowdrifts are prone to triggering. Size and frequency of drifts increase as the day progresses and with ascending altitude. Older blanketed drifted masses can be triggered as small-to-medium slab avalanches by winter sports enthusiasts. Danger zones occur esp. on shady steep slopes in E/S aspects. Particularly on steep, smooth grassy slopes in all aspects, medium-sized glide-snow avalanches continue to be possible. Where there has been rain impact the danger is increasing.

Snowpack structure

Due to fresh snow and wind, fresh snowdrifts are accumulating at high altitudes, bonding poorly with the old snowpack surface. The uppermost layers were still powdery at high altitudes, particularly on shady slopes, partly with surface hoar, now covered by fresh snow. On sunny slopes a partly breakable partly capable-of-bearing-loads melt-freeze crust has been blanketed. At intermediate altitudes the snowpack is often moist down to the ground. Result: gliding snow and glide-snow avalanches.

Weather

Nocturnal hours: Partly to heavily overcast skies, esp. in northern regions (snowfall over 700 m). Thursday daytime: Hardly any precipitation in the morning. As of midday, snowfall/rainfall more frequent and heavy. Snowfall level will ascend to 1500 m. By evening: 10 cm of fresh snow expected. At 2000 m: -6 to -2 degrees. Strong-to-stormy W/NW winds.

Outlook

Heavy fresh snowfall, storm winds, gale-strength gusts: avalanche danger will rise markedly as of intermediate altitudes.

Translated by Jeffrey McCabe, www.creativtrans.com

Avalanche problems



Danger ratings



Expositions

