



## Main danger: glide-snow avalanches. Fresh snow and wind at high altitudes: rising avalanche danger.



	<p>1500 m Voralpenbereich, Allgäuer Alpen, Bregenzerwaldgebirge</p>	
	<p>Lechquellengebirge, Lechtaler Alpen, Verwall, Silvretta, Rätikon Ost, Rätikon West</p>	

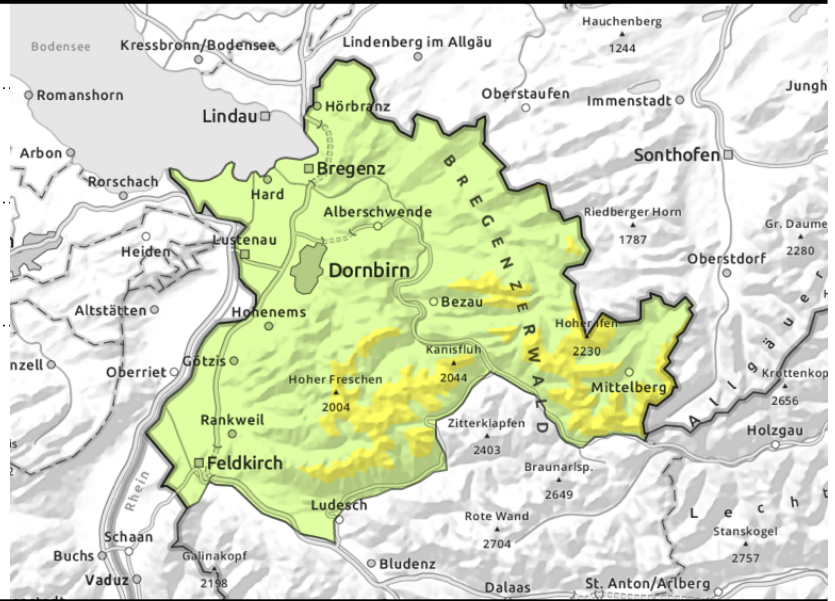
<p><b>Avalanche problems</b></p>	<p><b>Danger ratings</b></p>	<p><b>Expositions</b></p>

**Voralpenbereich, Allgäuer Alpen, Bregenzerwaldgebirge**



  steep grassy slopes, hillsides

  >1800 m fresh snowdrifts, covered older drifts



**Still glide-snow avalanches. Slightly rising danger due to daytime snowfall/wind**

In steep smooth grassy terrain in all aspects, glide-snow avalanches can continually be expected. Fresh snowdrifts are easily triggered. Size and frequency of snowdrifts increase with ascending altitude during the day. Older drifts can still be triggered as small-to-medium slab avalanches by persons. Such danger zones occur at high altitudes in shady, steep ridgeline terrain. Caution: the risks of being swept along and being forced to take a fall require attentiveness.

**Snowpack structure**

The snowpack has settled further. At high altitudes the uppermost layers are still powder, esp. on shady slopes. Due to mild temperatures and solar radiation they are becoming moist. During nights of clear skies, a crust forms on the surface. Fresh snow and wind will generate new drifts at high altitudes, poorly bonding with the old snowpack surface. At intermediate altitudes the snowpack is often moist down to the ground. Gliding snow masses and glide-snow avalanches have been reported. At low altitudes the snowpack has deteriorated.

**Weather**

Nocturnal hours: Cloud cover will increase, precipitation will set in by dawn. Wednesday daytime: Clouds will dominate from the start, repeated bouts of snowfall well into the day, in the afternoon it will be dry, then clouds may disperse somewhat. Cold air masses are flowing in. At 2000 m: -1 to -6 degrees. Brisk W/NW winds.

**Outlook**

Gliding snow activity will recede somewhat. Avalanche danger will increase at high altitudes due to fresh snow and winds.

**Avalanche problems**



**Danger ratings**



**Expositions**



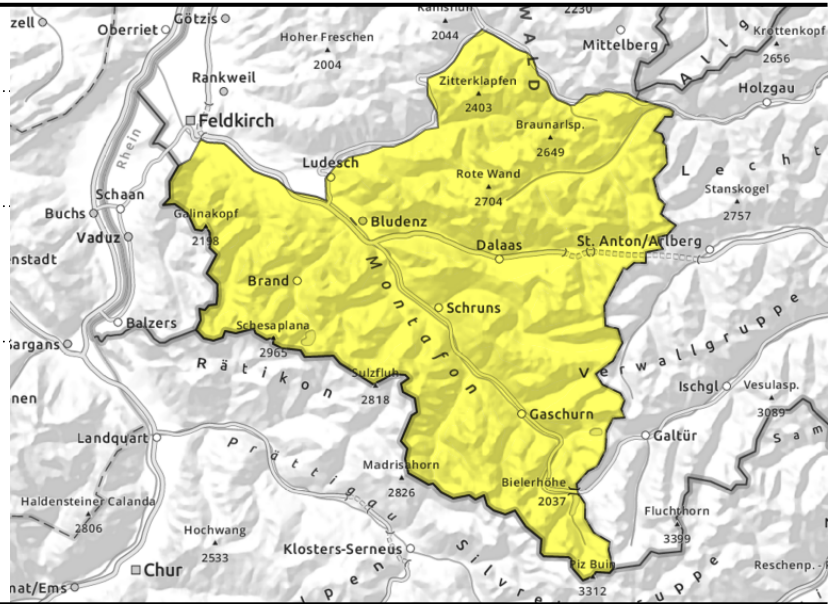
**Lechquellengebirge, Lechtaler Alpen, Verwall, Silvretta, Rätikon Ost, Rätikon West**



forest lanes, steep grassy slopes, hillsides, glide-snow avalanches



>1800 m fresh snowdrifts, covered older drifts



**Main danger: glide-snow avalanches. Fresh snowdrifts prone to triggering.**

In steep smooth grassy terrain in all aspects, glide-snow avalanches can continually be expected. Fresh snowdrifts are easily triggered. Size and frequency of snowdrifts increase with ascending altitude during the day. Older drifts can still be triggered as small-to-medium slab avalanches by persons. Such danger zones occur at high altitudes in shady, steep ridgeline terrain. Caution: the risks of being swept along and being forced to take a fall require attentiveness.

**Snowpack structure**

The snowpack has settled further. At high altitudes the uppermost layers are still powder, esp. on shady slopes. Due to mild temperatures and solar radiation they are becoming moist. During nights of clear skies, a crust forms on the surface. Fresh snow and wind will generate new drifts at high altitudes, poorly bonding with the old snowpack surface. At intermediate altitudes the snowpack is often moist down to the ground. Gliding snow masses and glide-snow avalanches have been reported. At low altitudes the snowpack has deteriorated.

**Weather**

Nocturnal hours: Cloud cover will increase, precipitation will set in by dawn. Wednesday daytime: Clouds will dominate from the start, repeated bouts of snowfall well into the day, in the afternoon it will be dry, then clouds may disperse somewhat. Cold air masses are flowing in. At 2000 m: -1 to -6 degrees. Brisk W/NW winds.

**Outlook**

Gliding snow activity will recede somewhat. Avalanche danger will increase at high altitudes due to fresh snow and winds.

Translated by Jeffrey McCabe, [www.creativtrans.com](http://www.creativtrans.com)

**Avalanche problems**



**Danger ratings**



**Expositions**

