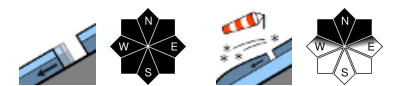


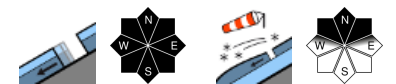
Main danger: glide-snow avalanches. Favourable conditions for winter sports enthusiasts.



Voralpenbereich, Allgäuer Alpen, Bregenzerwaldgebirge



Lechquellengebirge, Lechtaler Alpen, Verwall, Silvretta, Rätikon Ost, Rätikon West



Avalanche problems



Danger ratings



Expositions

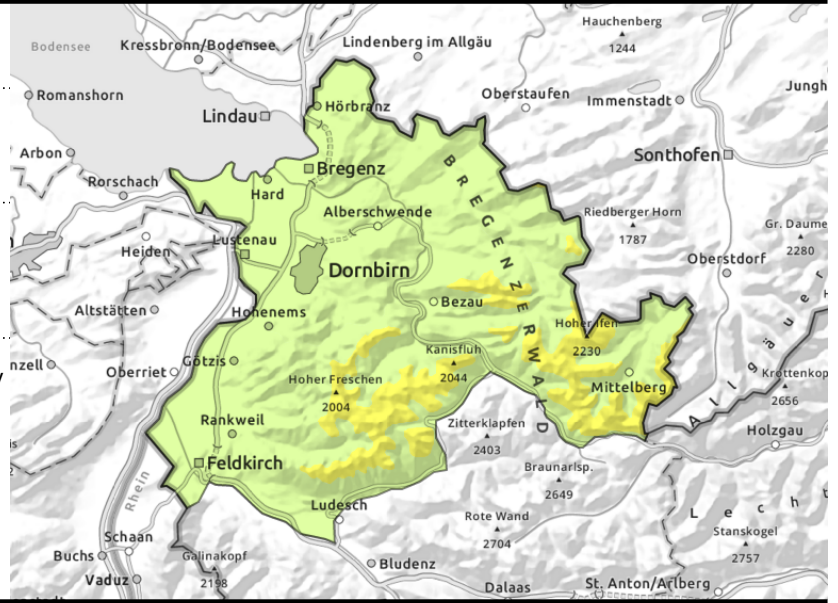


Voralpenbereich, Allgäuer Alpen, Bregenzerwaldgebirge



steep grassy slopes, hillsides, small wet-snow avalanches during daytime

>2000 m steep ridgeline shady terrain



Main danger: glide-snow avalanches. Favourable conditions for winter sports enthusiasts.

In steep smooth grassy terrain in all aspects, glide-snow avalanches can continually be expected. Solar radiation and markedly higher temperatures will make small wet avalanches possible esp. on sunny slopes. Older drifts can still be triggered as small-to-medium slab avalanches by persons. Such danger zones occur at high altitudes in shady, steep ridgeline terrain. Caution: the risks of being swept along and being forced to take a fall require attentiveness.

Snowpack structure

The snowpack has settled further and is well bonded with the often melt-freeze encrusted old snowpack. The uppermost layers are still soft, esp. on shady slopes. Older often blanketed snowdrifts are sometimes still prone to triggering. At intermediate altitude the snowpack is often moist down to the ground. Gliding movements are still possible in steep terrain where the snow has not discharged yet. At low altitudes the snowpack has deteriorated.

Weather

Nocturnal hours: Scattered clouds or cloudless skies. Tuesday daytime: Very sunny and mild. At 2000 m: 2-7 degrees. Light winds.

Outlook

On Wednesday clouds and a weak cold front will take over, bringing a small amount of fresh snow. Gliding snow activity will recede somewhat. At high altitudes the danger of dry-snow avalanches will increase.

Avalanche problems



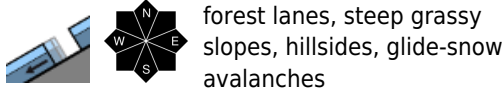
Danger ratings



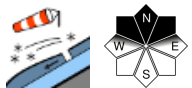
Expositions



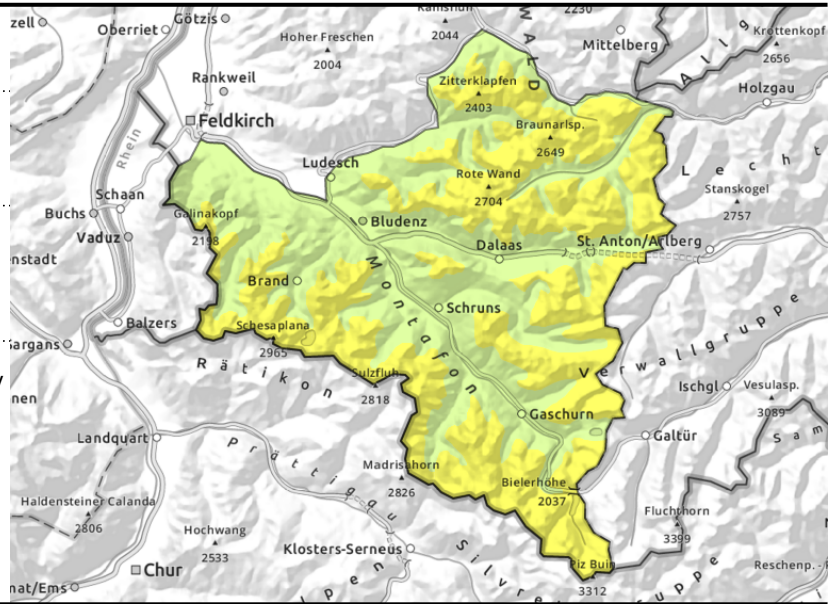
Lechquellengebirge, Lechtaler Alpen, Verwall, Silvretta, Rätikon Ost, Rätikon West



forest lanes, steep grassy slopes, hillsides, glide-snow avalanches



>2200 m steep ridgeline shady terrain



Main danger: glide-snow avalanches. Beware old snowdrifts at high altitudes.

In steep smooth grassy terrain in all aspects, glide-snow avalanches can continually be expected. Solar radiation and markedly higher temperatures will make small wet avalanches possible esp. on sunny slopes. Older drifts can still be triggered as small-to-medium slab avalanches by persons. Such danger zones occur at high altitudes in shady, steep ridgeline terrain. More deeply embedded layers inside the snowpack can generally be triggered only by large additional loading, esp. in transitions from shallow to deeper snow, e.g. entries into gullies and bowls. Small wet-snow avalanches are increasingly possible during the daytime.

Snowpack structure

The snowpack has settled further and is well bonded with the often melt-freeze encrusted old snowpack. The uppermost layers are still soft, esp. on shady slopes. Older often blanketed snowdrifts are sometimes still prone to triggering. At intermediate altitude the snowpack is often moist down to the ground. Gliding movements are still possible in steep terrain where the snow has not discharged yet. At low altitudes the snowpack has deteriorated.

Weather

Nocturnal hours: Scattered clouds or cloudless skies. Tuesday daytime: Very sunny and mild. At 2000 m: 2-7 degrees. Light winds.

Outlook

On Wednesday clouds and a weak cold front will take over, bringing a small amount of fresh snow. Gliding snow activity will recede somewhat. At high altitudes the danger of dry-snow avalanches will increase.

Translated by Jeffrey McCabe, www.creativtrans.com

Avalanche problems



Danger ratings



Expositions

