

## Mostly moderate avalanche danger at high altitudes

|  |   |  |
|--|---|--|
|  | <p>1600 m Allgäuer Alpen, Voralpenbereich, Bregenzerwalddgebirge</p>                      |  |
|  | <p>Lechquellengebirge, Lechtaler Alpen, Verwall, Silvretta, Rätikon Ost, Rätikon West</p> |  |

### Avalanche problems



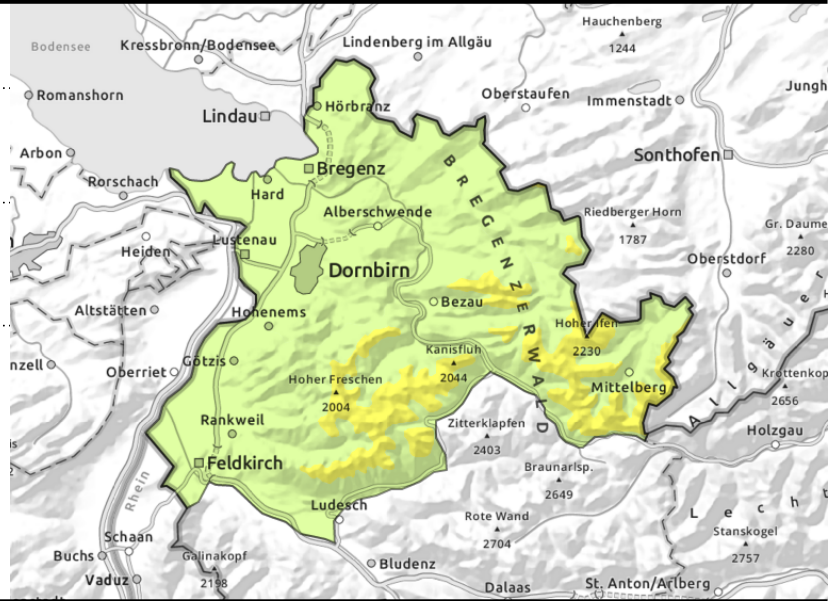
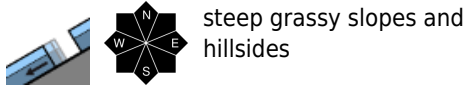
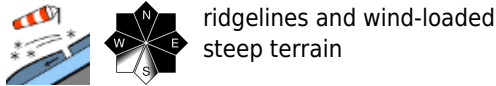
### Danger ratings



### Expositions



**Allgäuer Alpen, Voralpenbereich, Bregenzerwaldgebirge**



**Caution: small fresh drifts, still glide-snow avalanches**

Avalanche danger is predominantly low, moderate danger above 1600 m. Main problem: small snowdrift accumulations. Danger zones increase in size and frequency with ascending altitude, occurring primarily on wind-loaded steep slopes and in ridgeline terrain. They are often difficult to recognize. A small-to-medium slab avalanche can be triggered by 1 person. At all altitudes in steep terrain and on smooth grass-covered slopes in all aspects, glide-snow avalanches are possible which can reach medium size. Caution in zones below glide cracks. At low altitudes, wet slides are possible.

**Snowpack structure**

The fresh fallen snow has been able to settle at lower altitudes and bond with the old snowpack. Light winds have transported the fresh snow and led to new snowdrift masses. Wherever they blanket the fresh snow of soft layers or surface hoar, they are prone to triggering. Older snowdrifts are being increasingly blanketed over. At low and intermediate altitudes the base often is moist atop a warm ground, which favours gliding snow. There is currently little data available to the Avalanche Warning Service about the snowpack in various regions.

**Weather**

Nocturnal hours: Following an evening of mildly clouded skies, the cloud cover will intensify overnight. Friday: cloud cover will descend, the peaks become shrouded in fog. As of midday, light snowfall can be expected, as rainfall below 800-1000 m. At 2000 m: -2 degrees. Moderate high altitude winds, initially southerly, shifting to westerly.

**Outlook**

Saturday will be pleasant. As evening approaches, light precipitation will set in. The avalanche situation is not expected to change significantly.

**Avalanche problems**



**Danger ratings**



**Expositions**



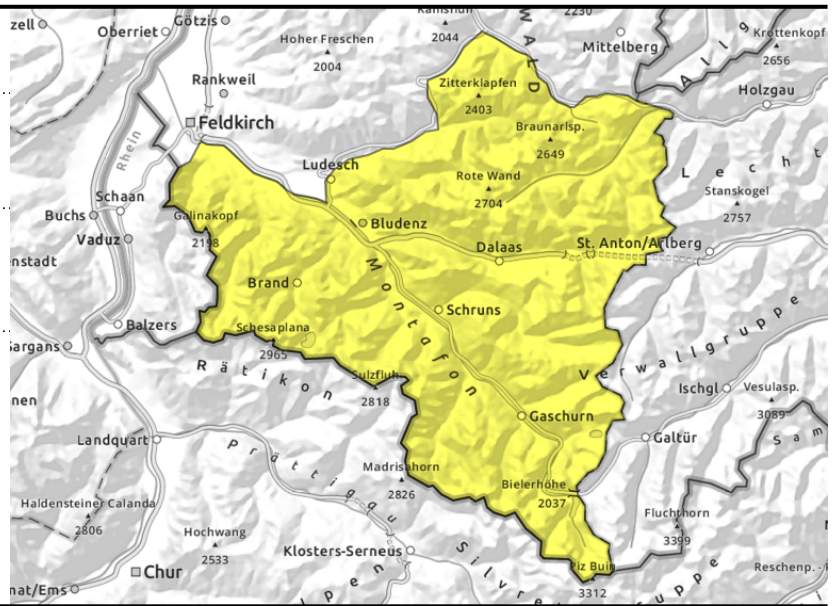
**Lechquellengebirge, Lechtaler Alpen, Verwall, Silvretta, Rätikon Ost, Rätikon West**



>2000 m wind-loaded steep terrain and ridgelines



steep grassy slopes, hillsides



**Caution: fresh and blanketed drifts, glide-snow avalanches**

Avalanche danger is moderate at higher altitudes. Main problem: fresh or covered snowdrift accumulations in outlying terrain. Danger zones occur in steep wind-loaded terrain and ridgelines and increase in size and frequency with ascending altitude. A medium slab avalanche can be triggered by 1 person. More deeply embedded layers inside the snowpack can usually be triggered only by large additional loading, primarily in transitions from shallow to deeper snow, e.g. at entries into gullies and bowls. At all altitudes in steep terrain and on smooth grass-covered slopes in all aspects, glide-snow avalanches are possible which can reach medium size. Caution in zones below glide cracks.

**Snowpack structure**

The large amounts of fresh fallen snow with little wind have been able to settle and bond with the old snowpack. In places there are soft layers or older snowdrift accumulations which have been blanketed over. Particularly on steep shady slopes above 2200 m, the old snowpack from late autumn still has unfavourable intermediate layers which are triggerable as slab avalanches. There is currently little data available to the Avalanche Warning Service about the snowpack in various regions.

**Weather**

Nocturnal hours: Following an evening of mildly clouded skies, the cloud cover will intensify overnight.  
Friday: cloud cover will descend, the peaks become shrouded in fog. As of midday, light snowfall can be expected, as rainfall below 800-1000 m. At 2000 m: -2 degrees. Moderate high altitude winds, initially southerly, shifting to westerly.

**Outlook**

Saturday will be pleasant. As evening approaches, light precipitation will set in. The avalanche situation is not expected to change significantly.

Translated by Jeffrey McCabe, [www.creativtrans.com](http://www.creativtrans.com)

**Avalanche problems**



**Danger ratings**



**Expositions**

