

## Often considerable danger at high altitudes

	forestline Allgäuer Alpen, Voralpenbereich, Bregenzerwaldgebirge	
	1800 m Lechquellengebirge, Lechtaler Alpen, Verwall, Silvretta, Rätikon Ost, Rätikon West	

### Avalanche problems



### Danger ratings



### Expositions



**Allgäuer Alpen, Voralpenbereich, Bregenzerwaldgebirge**



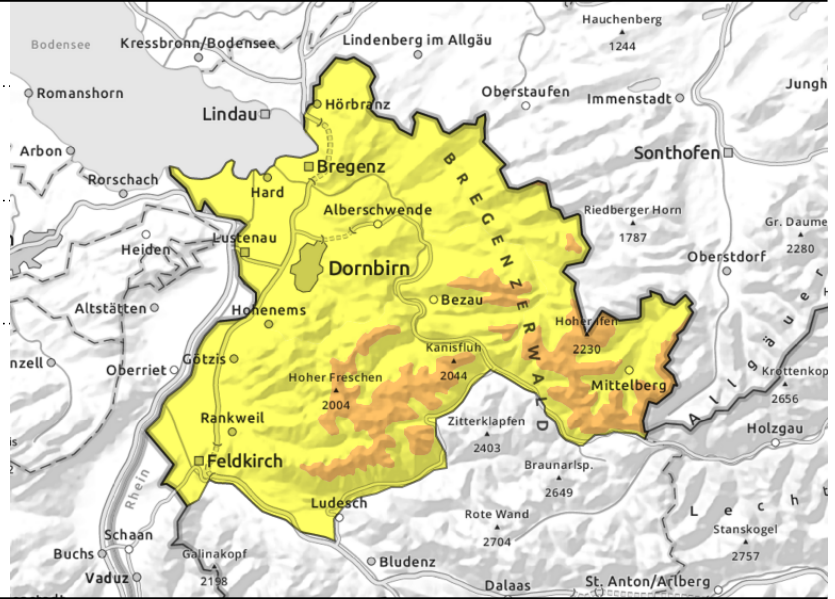
forestline



beware drifts especially in ridgeline terrain



steep grassy slopes and hillsides



**Intensifying winds: fresh drifts and considerable avalanche danger**

Avalanche danger is frequently moderate, considerable at higher altitudes. Main problem: snowdrift accumulations. Danger zones occur in steep wind-loaded terrain and ridgelines. A medium-to-large slab avalanche can be triggered by 1 person. Activities in outlying terrain require experience in assessing the terrain and avalanche dangers. At all altitudes in steep terrain and on smooth grass-covered slopes in all aspects, glide-snow avalanches are possible which can reach medium size. Caution in zones below glide cracks.

**Snowpack structure**

The large amounts of fresh fallen snow with little wind have been able to settle at lower altitudes and bond with the old snowpack. At higher altitudes the settling process takes longer, due to low temperatures. In places there are soft layers or older snowdrift accumulations which have been blanketed over, and the bonding inside the fresh snow and between fresh and older snow is poor. In high altitude ridgeline terrain, the fresh snow has already been transported, generating new snowdrift masses. There is currently little data available to the Avalanche Warning Service about the snowpack in various regions.

**Weather**

Nocturnal hours: Until midnight, skies will remain clear and star-studded, then clouds will move in.  
Monday: dry weather conditions, layered cloud cover, only weak sunshine but the summits should remain in the clear. A SW foehn air current will bring higher temperatures. At 2000 m: -8 to -2 degrees. Moderate, later intensifying W/SW winds.

**Outlook**

The snowpack continues to settle and consolidate. On Tuesday, more fresh snowfall is anticipated. As winds intensify, snow transport will generate new snowdrift accumulations. The avalanche situation is not expected to change significantly.

**Avalanche problems**



**Danger ratings**



**Expositions**

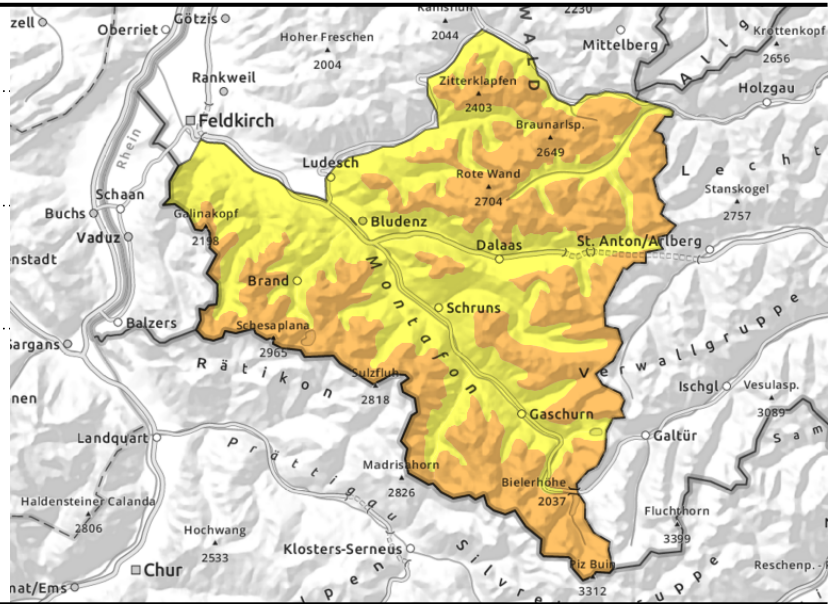


**Lechquellengebirge, Lechtaler Alpen, Verwall, Silvretta, Rätikon Ost, Rätikon West**



steep slopes, ridgelines are wind loaded

steep grassy slopes and hillsides



**Intensifying winds: fresh drifts and considerable avalanche danger**

Avalanche danger is considerable at higher altitudes. Main problem: snowdrift accumulations. Danger zones occur in steep wind-loaded terrain and ridgelines. A medium-to-large slab avalanche can be triggered by 1 person. Activities in outlying terrain require experience in assessing the terrain and avalanche dangers. At all altitudes in steep terrain and on smooth grass-covered slopes in all aspects, glide-snow avalanches are possible which can reach medium size. Caution in zones below glide cracks.

**Snowpack structure**

The large amounts of fresh fallen snow with little wind have been able to settle at lower altitudes and bond with the old snowpack. At higher altitudes the settling process takes longer, due to low temperatures. In places there are soft layers or older snowdrift accumulations which have been blanketed over, and the bonding inside the fresh snow and between fresh and older snow is poor. In high altitude ridgeline terrain, the fresh snow has already been transported, generating new snowdrift masses. There is currently little data available to the Avalanche Warning Service about the snowpack in various regions.

**Weather**

Nocturnal hours: Until midnight, skies will remain clear and star-studded, then clouds will move in.  
Monday: dry weather conditions, layered cloud cover, only weak sunshine but the summits should remain in the clear. A SW foehn air current will bring higher temperatures. At 2000 m: -8 to -2 degrees. Moderate, later intensifying W/SW winds.

**Outlook**

On Tuesday, more fresh snowfall is anticipated. As winds intensify, snow transport will generate new snowdrift accumulations. The avalanche situation is not expected to change significantly.

Translated by Jeffrey McCabe, [www.creativtrans.com](http://www.creativtrans.com)

**Avalanche problems**



**Danger ratings**



**Expositions**

