

Rising avalanche danger widespread due to fresh snow and rain



1600 m

Allgäuer Alpen, Voralpenbereich, Bregenzerwaldgebirge

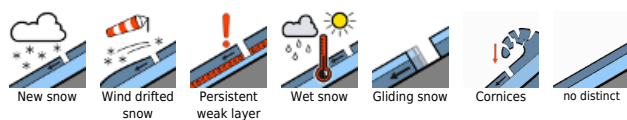


1800 m

Lechquellengebirge, Lechtaler Alpen, Verwall, Silvretta, Rätikon Ost, Rätikon West



Avalanche problems



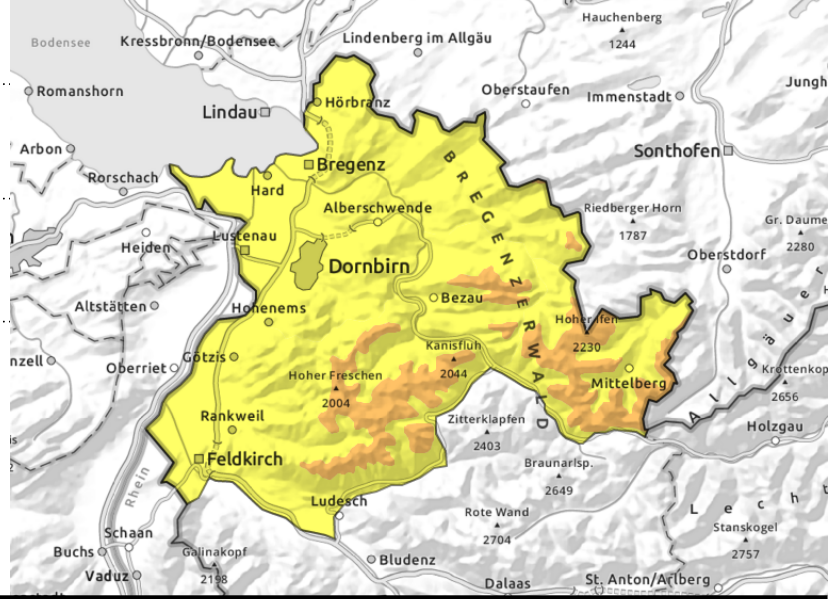
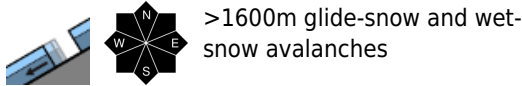
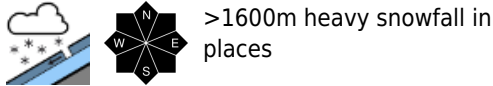
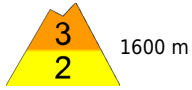
Danger ratings



Expositions



Allgäuer Alpen, Voralpenbereich, Bregenzerwaldgebirge



Rising avalanche danger widespread due to fresh snow and rain

Above 1600m avalanche danger is considerable, at low altitudes danger is generally moderate. Main problem: large amounts of fresh fallen snow. Danger zones occur on steep slopes in all aspects. Small-to-medium slab avalanches and loose-snow avalanches can be triggered by one sole person. Activities in outlying terrain require experience in assessing the terrain and avalanche dangers. In steep rocky terrain, also naturally triggered avalanches are possible. In areas where there is rain impact, wet-snow and glide-snow avalanche are possible on steep grassy slopes in all aspects and can reach medium size.

Snowpack structure

Up to 1600m the old snowpack is moist-to-wet due to rain impact. The fresh fallen snow can bond well with it. At higher altitudes, soft layers and older snowdrift accumulations have often been blanketed by fresh snowfall and the bonding of fresh to old snow is often poor. In addition, trigger-sensitive intermediate layers are evident inside the old snowpack. There is currently little data available to the Avalanche Warning Service about the snowpack in various regions.

Weather

Nocturnal hours: moderate snowfall from the heavy clouds, often heavy, down to low lying areas.
Saturday: moderately heavy snowfall all day long. On Saturday night it will come to an end.
 Temperatures will drop further. At 2000m: dropping from -5 to -11 degrees. Light to moderate northerly winds at high altitudes.

Outlook

Sunday will be sunny and cold. The snowpack can consolidate only very slopes and will remain prone to triggering. Avalanche danger levels could increase, depending on amount of fresh snow and wind. Activities in outlying terrain require restraint and risk-conscious conduct.

Avalanche problems



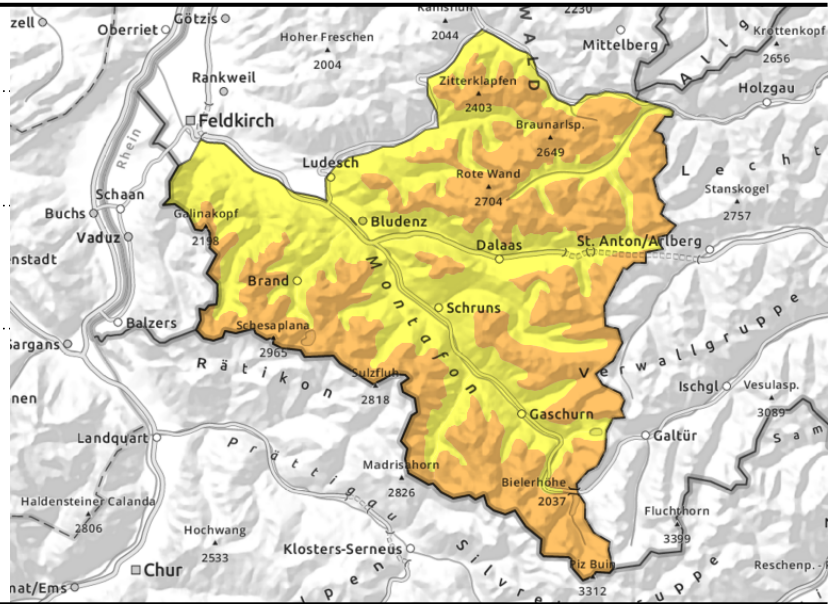
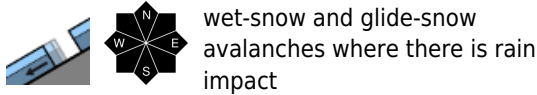
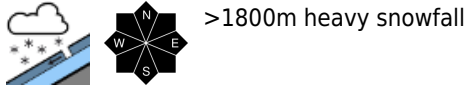
Danger ratings



Expositions



Lechquellengebirge, Lechtaler Alpen, Verwall, Silvretta, Rätikon Ost, Rätikon West



Heavy snowfall at high altitudes. Wet-snow and glide-snow avalanches where there is rain impact.

Main problem: heavy snowfall. Above 1800m avalanche danger is considerable, at lower altitudes moderate. Danger zones occur on steep slopes in all aspects. Small-to-medium slab avalanches and loose-snow avalanches can be triggered by one sole person. Activities in outlying terrain require experience in assessing the terrain and avalanche dangers. In steep rocky terrain, also naturally triggered avalanches are possible. In areas where there is rain impact, wet-snow and glide-snow avalanche are possible on steep grassy slopes in all aspects and can reach medium size.

Snowpack structure

The fresh fallen snow will be deposited on soft layers or old snowdrifts at high altitudes. With increasing altitude they are blanketed by fresher snowfall and are prone to triggering. The fresh snow is often poorly bonded to the old snowpack surface or the newest layers inside the snowpack. Particularly on very steep shady slopes above 2200m the old snowpack from late autumn frequently has unfavourable intermediate layers. At lower altitudes the snowpack has been weakened by rain impact. There is currently little data available to the Avalanche Warning Service about the snowpack in various regions.

Weather

Nocturnal hours: moderate snowfall from the heavy clouds, often heavy, down to low lying areas.
Saturday: moderately heavy snowfall all day long. On Saturday night it will come to an end.
 Temperatures will drop further. At 2000m: dropping from -5 to -11 degrees. Light to moderate northerly winds at high altitudes.

Outlook

Sunday will be sunny and cold. The snowpack can consolidate only very slopes and will remain prone to triggering. Avalanche danger levels could increase, depending on amount of fresh snow and wind. Activities in outlying terrain require restraint and risk-conscious conduct.

Translated by Jeffrey McCabe, www.creativtrans.com

Avalanche problems



Danger ratings



Expositions

