

Update: Considerable avalanche danger regionally at high altitudes. Increasing wet-snow, glide-snow avalanches in areas with rain impact

	Allgäuer Alpen, Voralpenbereich, Bregenzerwaldgebirge	
	2000 m Lechquellengebirge, Lechtaler Alpen, Verwall, Silvretta, Rätikon Ost, Rätikon West	

Avalanche problems



Danger ratings



Expositions



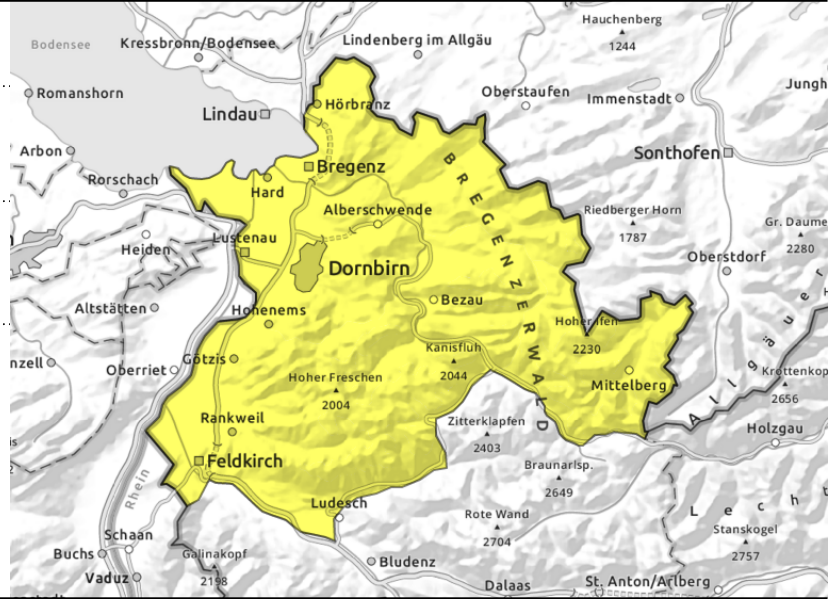
Allgäuer Alpen, Voralpenbereich, Bregenzerwaldgebirge



>1600m: wind-loaded steep slopes



steep, smooth grassy slopes and hillsides



Increase in danger due to fresh snow and snowdrifts

The major problem: freshly generated snowdrifts. Avalanche prone locations are found mostly above 1600m on NW-N-E facing steep ridgeline slopes and in wind-loaded gullies and bowls. Slab avalanches can be triggered by one single person. In areas at low and intermediate altitudes where there is rain impact, increasingly frequent naturally triggered small-to- (in isolated cases) medium sized glide-snow avalanches can be expected on steep, smooth, grassy slopes and hillsides. Small wet-snow avalanches are also possible.

Snowpack structure

Above 1200m there is already a lot of snow on the ground. The fresh snow was often transported by strong winds, deposited as snowdrift accumulations. These are often still prone to triggering. Fresh snow and snowdrifts have settled somewhat and stabilized slightly, but often are poorly bonded with the old snowpack or inside intermediate layers. At low altitudes the snow fell on bare ground. There is currently little data available to the Avalanche Warning Service about the snowpack.

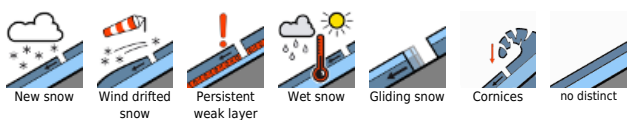
Weather

The day will begin with a warm front and lots of cloud cover, making conditions gray. Light snowfall down to low lying areas in early morning, later turning to sleet and ultimately, to rain in the Rhine Valley and on Lake Constance. The snowfall level will ascend over the course of the day, by afternoon it will lie at 1000m and above. During the night, snowfall and rainfall will continue. Intense snow transport at high altitudes. Temperature at 2000m: -10 to -3 degrees. Strong to stormy W/SW winds at high altitudes.

Outlook

Conditions will remain instable. Further snowfall down to low lying areas. Avalanche danger levels will increase again. The next avalanche bulletin will be published on Friday at latest.

Avalanche problems



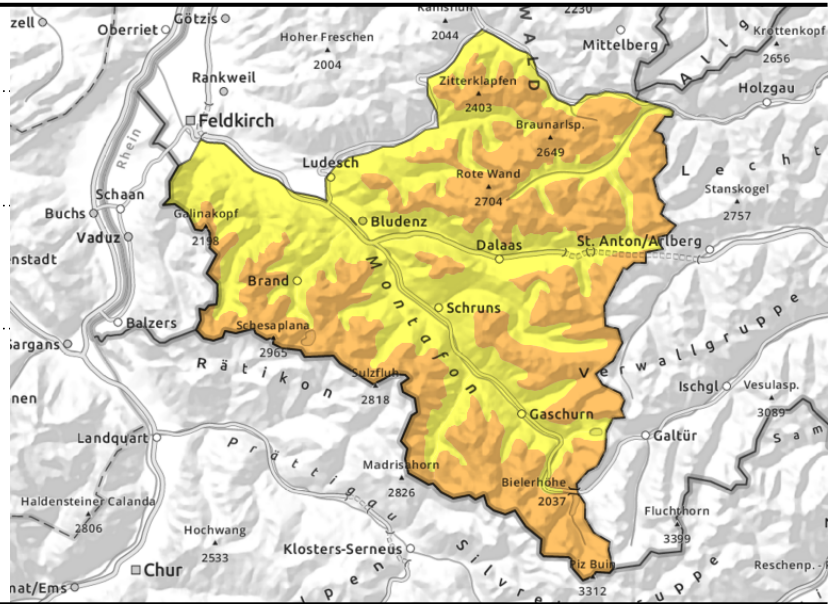
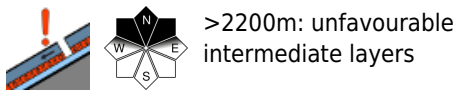
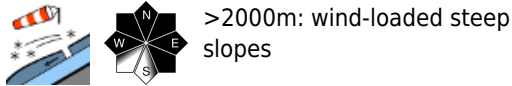
Danger ratings



Expositions



Lechquellengebirge, Lechtaler Alpen, Verwall, Silvretta, Rätikon Ost, Rätikon West



Caution urged towards trigger-sensitive snowdrifts. Increasing glide-snow avalanches due to rainfall and higher temperatures.

The major problem: freshly generated snowdrifts. Avalanche prone locations are found mostly in W-N-SE facing steep ridgeline terrain and wind-loaded gullies and bowls. Slab avalanches can be triggered by one single person. At high altitudes the triggerings can grow to large size. Activities in outlying terrain away from secured ski pistes require much experience in assessing avalanche dangers in open terrain. In areas at low and intermediate altitudes where there is rain impact, increasingly frequent naturally triggered small-to- (in isolated cases) medium sized glide-snow avalanches can be expected on steep, smooth, grassy slopes and hillsides. Small wet-snow avalanches are also possible.

Snowpack structure

The fresh fallen snow of the last few days was transported by strong winds and generated new snowdrift accumulations. With increasing altitude they become more prone to triggering. The fresh snow and drifts are often poorly bonded to the old snowpack or to the latest layers inside the snowpack. Particularly on very steep shady slopes above about 2200m the snowpack shows evidence of unfavourable intermediate layers. At low altitudes the snow fell on bare ground. There is currently little data available to the Avalanche Warning Service about the snowpack.

Weather

The day will begin with a warm front and lots of cloud cover, making conditions gray. Light snowfall down to low lying areas in early morning, later turning to sleet and ultimately, to rain in the Rhine Valley and on Lake Constance. The snowfall level will ascend over the course of the day, by afternoon it will lie at 1000m and above. During the night, snowfall and rainfall will continue. Intense snow transport at high altitudes. Temperature at 2000m: -10 to -3 degrees. Strong to stormy W/SW winds at high altitudes.

Outlook

Conditions will remain instable. Further snowfall down to low lying areas. Avalanche danger levels are not expected to change significantly. The next avalanche bulletin will be published on Friday at latest.

Avalanche problems



Danger ratings



Expositions



Avalanche problems



Danger ratings



Expositions

