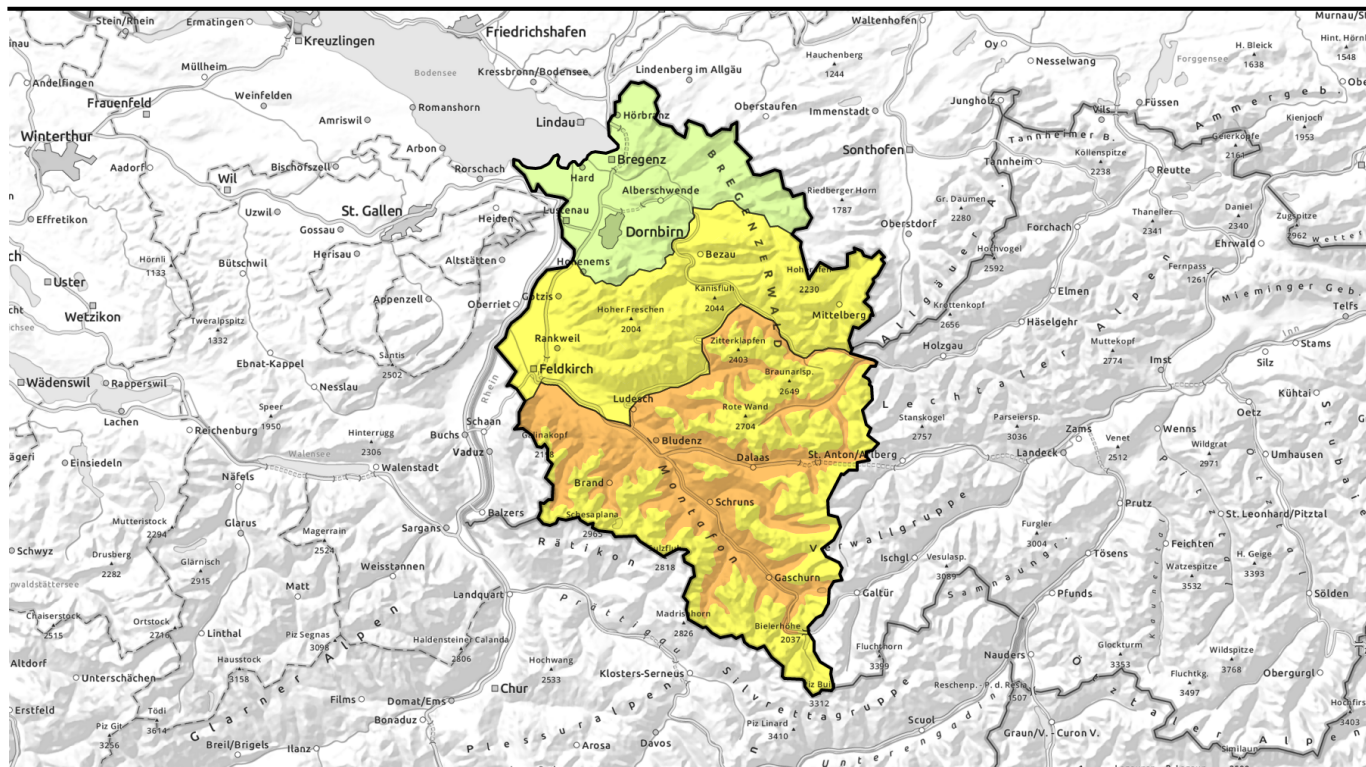


Avalanche report for Monday, 01.05.2023



Final Avalanche Bulletin of the season. Mostly unfavourable conditions, regionally considerable avalanche danger.

	Bregenzwaldgebirge, Allgäuer Alpen	
	2600 m Lechtalengebirge, Lechtaler Alpen, Verwall, Rätikon West, Rätikon Ost, Silvretta	
	Voralpenbereich	

Avalanche problems



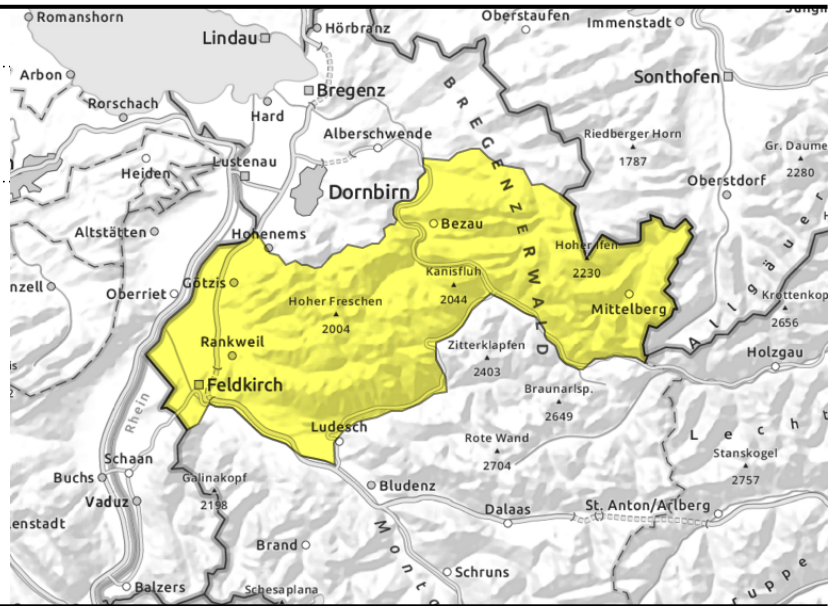
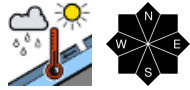
Danger ratings



Expositions



Bregenzerwaldgebirge, Allgäuer Alpen



Wet-snow avalanches continue, due to lacking nocturnal outgoing longwave radiation and mild temperatures.

Avalanche danger is moderate. Due to a thoroughly wet snowpack, naturally triggered wet slides and avalanches are possible in zones which have not yet discharged. On steep grassy slopes, glide-snow avalanches still threaten. Isolated small-to-medium avalanches can still be triggered in extremely steep terrain. Caution on hikes towards steep snowfield above the trail. Winter sports enthusiasts can trigger small-to-medium avalanches, esp. on very steep slopes.

Snowpack structure

The old snowpack is weakened due to rain impact and lack of nocturnal outgoing radiation, softens further during the daytime. At low and intermediate altitudes the ground is often bare of snow, particularly on sunny slopes. Avalanche Warning Services no longer have as much information from these regions.

Weather

Nocturnal hours: lacking nocturnal outgoing radiation and lots of air moisture: light showers in early morning. Monday: gray skies, wet weather, intensifying rainfall in the evening. The snowfall level will descend from 2400 down to 2000 m. At 2000 m: 2 degrees. Light winds from the south, moderate in the foehn lanes.

Outlook

On Monday night, some snowfall above 1700 m. In high alpine regions, 10-20 cm of fresh snow is expected by Tuesday evening. The danger of wet-snow avalanches will recede on Tuesday. At high and high-alpine altitudes the danger level could rise somewhat due to fresh snow and freshly generated snowdrift accumulations. The daily Avalanche Bulletins of the Avalanche Warning Service are hereby at an end for this season.

Avalanche problems



Danger ratings



Expositions



Lechquellengebirge, Lechtaler Alpen, Verwall, Rätikon West, Rätikon Ost, Silvretta



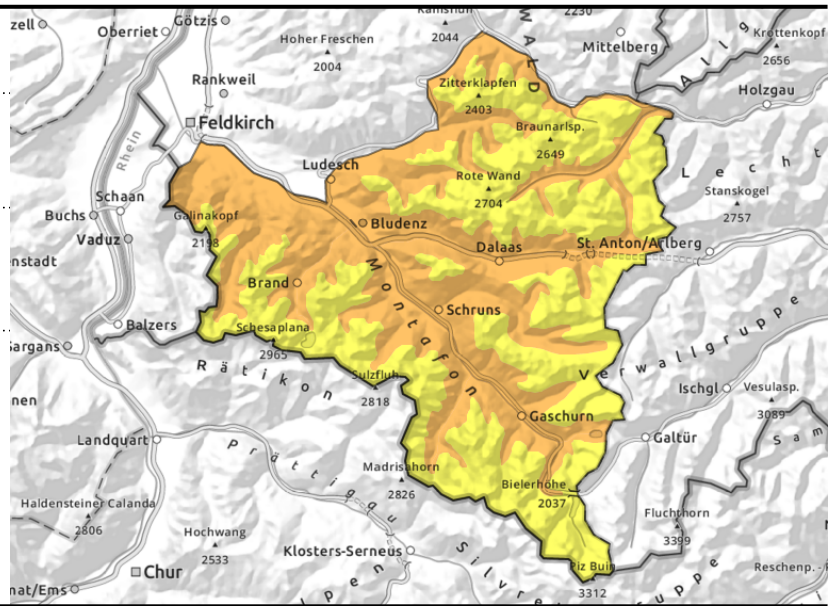
2600 m



below 2600 m



> 2400 m unfavourable intermediate snowpack layers



Heed: wet-snow avalanches, fresh snow and snowdrifts at high altitudes

Due to a thoroughly wet snowpack, naturally triggered wet slides and avalanches are possible in zones which have not yet discharged. On steep grassy slopes, glide-snow avalanches still threaten. Isolated small-to-medium avalanches can still be triggered in extremely steep terrain. Caution on hikes towards steep snowfield above the trail. Winter sports enthusiasts can trigger small-to-medium avalanches, esp. on very steep slopes.

Snowpack structure

The old snowpack is weakened due to rain impact and lack of nocturnal outgoing radiation, softens further during the daytime. At low and intermediate altitudes the ground is often bare of snow, particularly on sunny slopes. Avalanche Warning Services no longer have as much information from these regions.

Weather

Nocturnal hours: lacking nocturnal outgoing radiation and lots of air moisture: light showers in early morning. Monday: gray skies, wet weather, intensifying rainfall in the evening. The snowfall level will descend from 2400 down to 2000 m. At 2000 m: 2 degrees. Light winds from the south, moderate in the foehn lanes.

Outlook

On Monday night, some snowfall above 1700 m. In high alpine regions, 10-20 cm of fresh snow is expected by Tuesday evening. The danger of wet-snow avalanches will recede on Tuesday. At high and high-alpine altitudes the danger level could rise somewhat due to fresh snow and freshly generated snowdrift accumulations. The daily Avalanche Bulletins of the Avalanche Warning Service are hereby at an end for this season.

Avalanche problems



Danger ratings

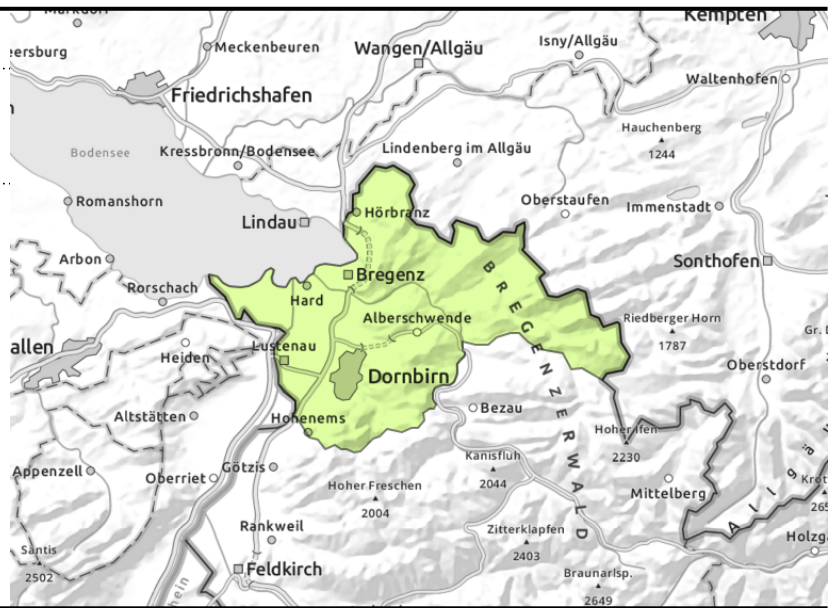
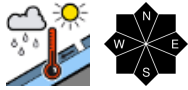


Expositions



Avalanche report for Monday, 01.05.2023

Voralpenbereich



Hardly any snow on the ground, isolated wet-snow avalanches

Naturally triggered wet slides and avalanches are possible in zones which have not yet discharged. On steep grassy slopes, glide-snow avalanches still threaten.

Snowpack structure

The shallow old snowpack is being weakened by rainfall and lack of nocturnal outgoing radiation, it softens up further during the daytime. All in all, there is not much snow on the ground. Avalanche Warning Services no longer have as much information from these regions.

Weather

Nocturnal hours: lacking nocturnal outgoing radiation and lots of air moisture: light showers in early morning. Monday: gray skies, wet weather, intensifying rainfall in the evening. The snowfall level will descend from 2400 down to 2000 m. At 2000 m: 2 degrees. Light winds from the south, moderate in the foehn lanes.

Outlook

On Monday night, it will be rainy, snowfall above 1700 m. The danger of wet slides and wet-snow avalanches persists. The daily Avalanche Bulletins of the Avalanche Warning Service are hereby at an end for this season.

Translated by Jeffrey McCabe, www.creativtrans.com

Avalanche problems



Danger ratings



Expositions

