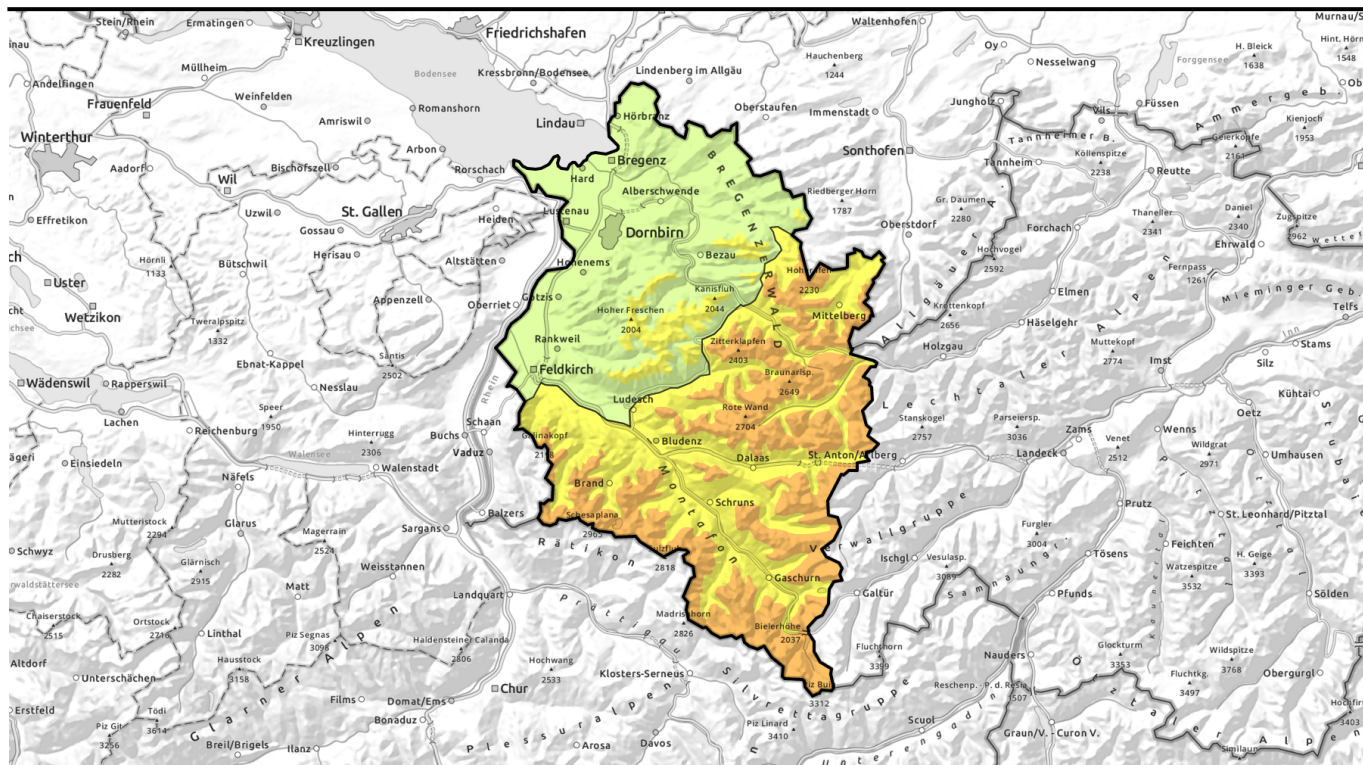


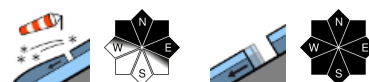
Avalanche report 25.04.2023 through 26.04.2023



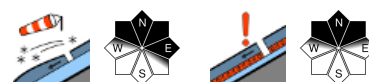
Increase in avalanche danger at high altitudes due to fresh snow and snowdrifts



Voralpenbereich, Bregenzerwaldgebirge



Lechquellengebirge, Lechtaler Alpen, Verwall, Rätikon West, Rätikon Ost, Silvretta, Allgäuer Alpen



Avalanche problems



Danger ratings

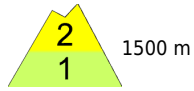


Expositions



Avalanche report **25.04.2023** through **26.04.2023**

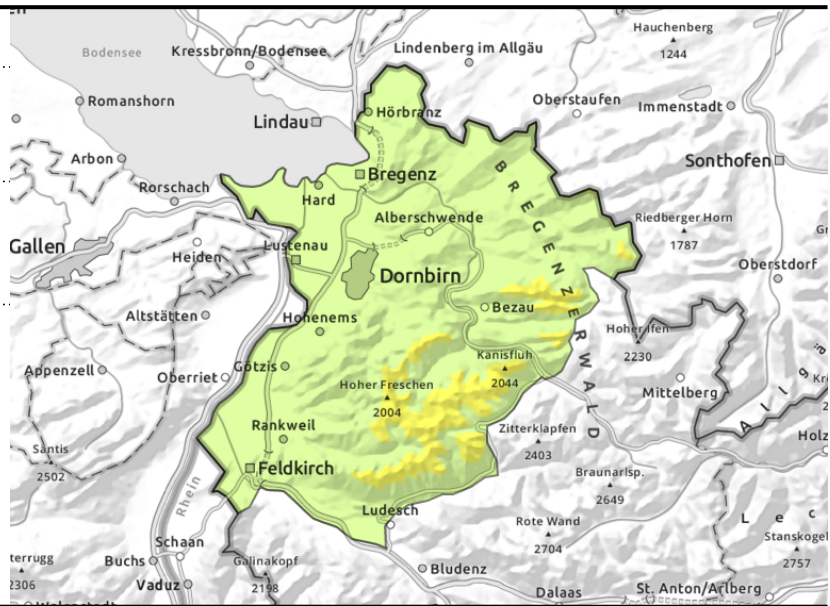
Voralpenbereich, Bregenzerwaldgebirge



with ascending altitude in
ridgeline terrain



steep grassy slopes



Fresh snowdrift accumulations at high altitudes

Avalanche danger is moderate. With ascending altitude esp. in ridgeline terrain, fresh snowdrifts require attentiveness. Small slab avalanches can easily be triggered. On Wednesday, naturally triggered slides and loose-snow avalanches are possible on very steep slopes, esp. with solar radiation. The danger of wet-snow avalanches has receded with lower temperatures, but due to the lack of nocturnal outgoing radiation the snowpack cannot freeze. With daytime warming and solar radiation, the likelihood of triggering rises again during the day. On steep grassy slopes, glide-snow avalanches continue to be possible.

Snowpack structure

On Monday night and on Tuesday there will be some fresh snow down to intermediate altitudes. Wind impact will generate new snowdrift accumulations. Up to high altitudes the fresh snow will bond well with the wettened snowpack surface. At low and intermediate altitudes the ground is often bare of snow.

Weather

Nocturnal hours: variable to heavy clouds, with repeated showers. Snowfall level will descend from 1500 down to 1100 m. Tuesday: Cloud and fog, repeated showers, snowfall level 1100 m. Dispersed clouds possible but not significant. At 2000 m: -4 degrees. Moderate to brisk W/NW winds. Wednesday: initially quite sunny, then clouds in the afternoon, but mostly dry. At the end of the day, likelihood of showers will increase. At 2000 m: -4 to 0 degrees.

Outlook

Thursday will be partly sunny, with some cloudbanks. It will remain dry. Friday will be variably cloudy. Avalanche danger levels are not expected to change significantly. In high alpine regions the snowdrift accumulations remain prone to triggering.

Avalanche problems



Danger ratings

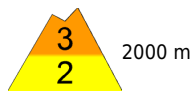



Expositions




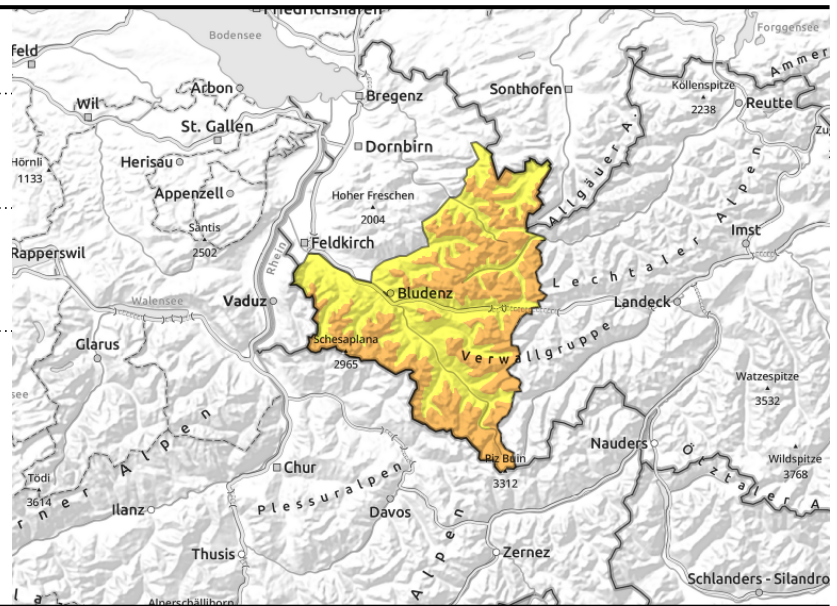
Avalanche report **25.04.2023** through **26.04.2023**

Lechquellengebirge, Lechtaler Alpen, Verwall, Rätikon West, Rätikon Ost, Silvretta, Allgäuer Alpen



 with ascending altitude in ridgeline terrain, gullies, bowls

 superficial weak layers



Considerable avalanche danger due to fresh snowdrift accumulations at high altitudes

Avalanche danger at high altitudes is considerable. With ascending altitude esp. in ridgeline terrain, fresh snowdrifts require attentiveness. Small slab avalanches can easily be triggered. On Wednesday, naturally triggered slides and loose-snow avalanches are possible on very steep slopes, esp. with solar radiation. The danger of wet-snow avalanches has receded with lower temperatures, but due to the lack of nocturnal outgoing radiation the snowpack cannot freeze. With daytime warming and solar radiation, the likelihood of triggering rises again during the day. On steep grassy slopes, glide-snow avalanches continue to be possible.

Snowpack structure

On Monday night and on Tuesday there will be some fresh snow down to intermediate altitudes. Wind impact will generate new snowdrift accumulations. Up to high altitudes the fresh snow will bond well with the wettened snowpack surface. On high-altitude shady slopes the near-surface layers are often prone to triggering. On shady steep slopes above 2400 m, there are unfavorable layers, mostly triggerable by large additional loading.

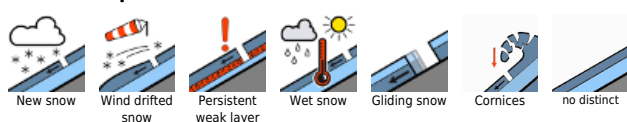
Weather

Nocturnal hours: variable to heavy clouds, with repeated showers. Snowfall level will descend from 1500 down to 1100 m. Tuesday: Cloud and fog, repeated showers, snowfall level 1100 m. Dispersed clouds possible but not significant. At 2000 m: -4 degrees. Moderate to brisk W/NW winds. Wednesday: initially quite sunny, then clouds in the afternoon, but mostly dry. At the end of the day, likelihood of showers will increase. At 2000 m: -4 to 0 degrees.

Outlook

Thursday will be partly sunny, with some cloudbanks. It will remain dry. Friday will be variably cloudy. Avalanche danger levels are not expected to change significantly. In high alpine regions the snowdrift accumulations remain prone to triggering.

Avalanche problems



Danger ratings



Expositions



published at 24.04.2023, 18:00 h by Andreas Pecl

Avalanche report **25.04.2023** through **26.04.2023**



Translated by Jeffrey McCabe, www.creativtrans.com

Avalanche problems



Danger ratings



Expositions

