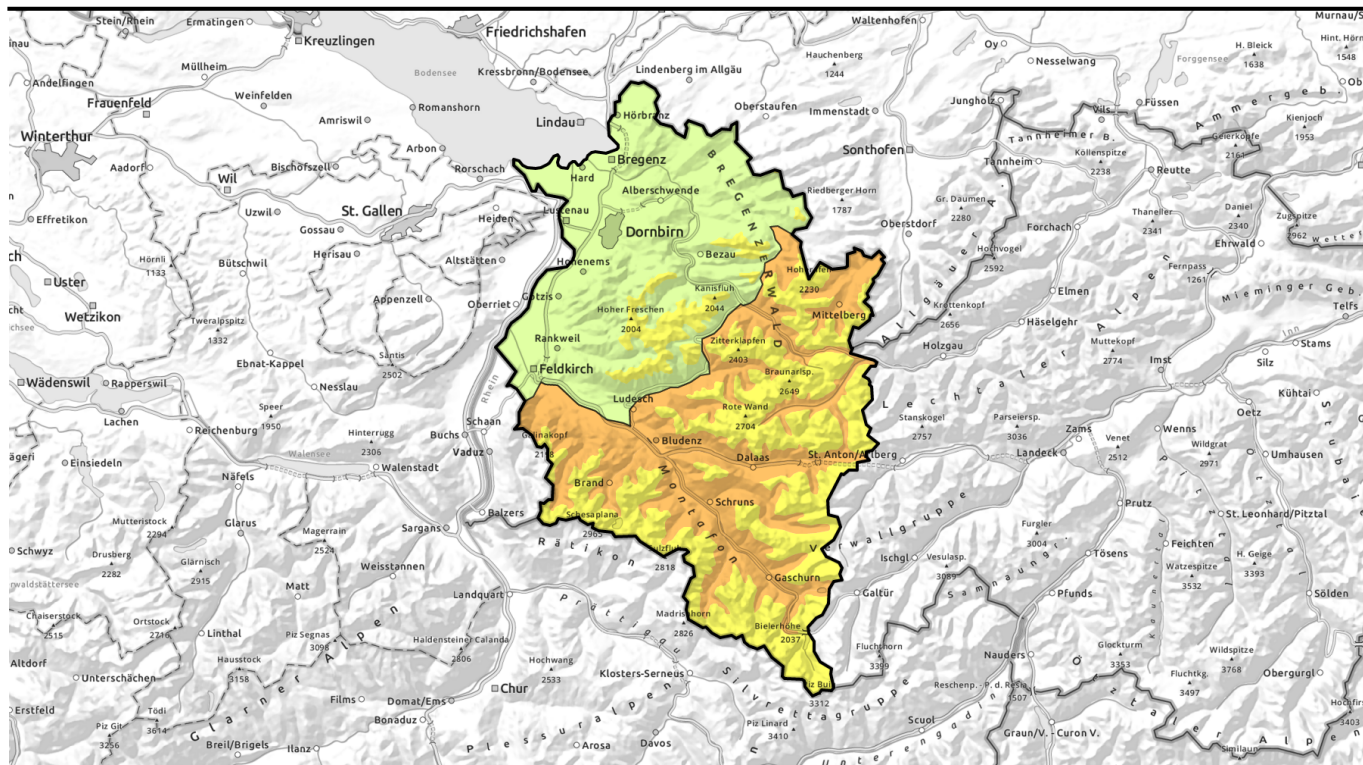


Avalanche report for Monday, 24.04.2023

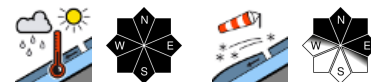


Intermittent nighttime rainfall and wet-snow avalanches. Rising danger at high altitudes due to fresh snow and fresh drifts.



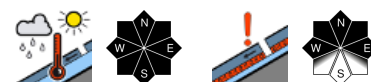
1600 m

Voralpenbereich, Bregenzerwaldgebirge



2200 m

Lechquellengebirge, Lechtaler Alpen, Verwall, Rätikon West, Rätikon Ost, Silvretta, Allgäuer Alpen



Avalanche problems



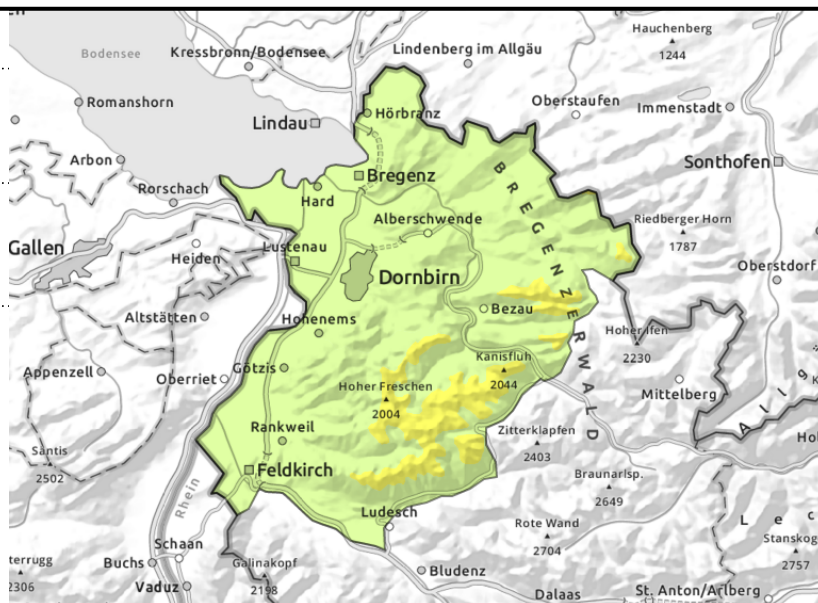
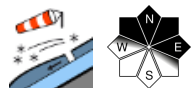
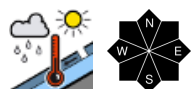
Danger ratings



Expositions



Voralpenbereich, Bregenzerwaldgebirge



Main danger: wet-snow avalanches

Avalanche danger above 1600 m is moderate, below that altitude danger is low. With ascending altitude, particularly in ridgeline terrain, fresh drifts are tricky: attention. Wherever there is sufficient snow, naturally triggered wet-snow avalanches can be expected and reach medium size. Also on bare-ground hiking trails, the risks of wet-snow avalanches require attentiveness.

Snowpack structure

Some fresh snow is expected overnight above 1600 m, with wind-impact new snowdrift accumulations will be generated. The old snowpack is thoroughly wet up to high altitudes. Shower-like thunderstorms are expected, heightening the likelihood of naturally triggered avalanches. At high altitudes the fresh snow is bonding with the old snowpack. At low and intermediate altitudes the ground is often bare.

Weather

Nocturnal hours: showers from the west in the evening are likely, in the nighttime hours widespread rainfall, the snowfall level descending to 1600 m. Monday: final precipitation will move eastwards, clouds will disperse, sunshine is possible but gray skies will persist in the moist westerly air current. Repeated bouts of rain or snow, snowfall level at 1500 m. At 2000 m: -2 degrees. Brisk W/NW winds.

Outlook

Late winter conditions. Showerlike snowfall above 1200 m. Higher up, avalanche danger levels could increase due to fresh snowfall.

Avalanche problems



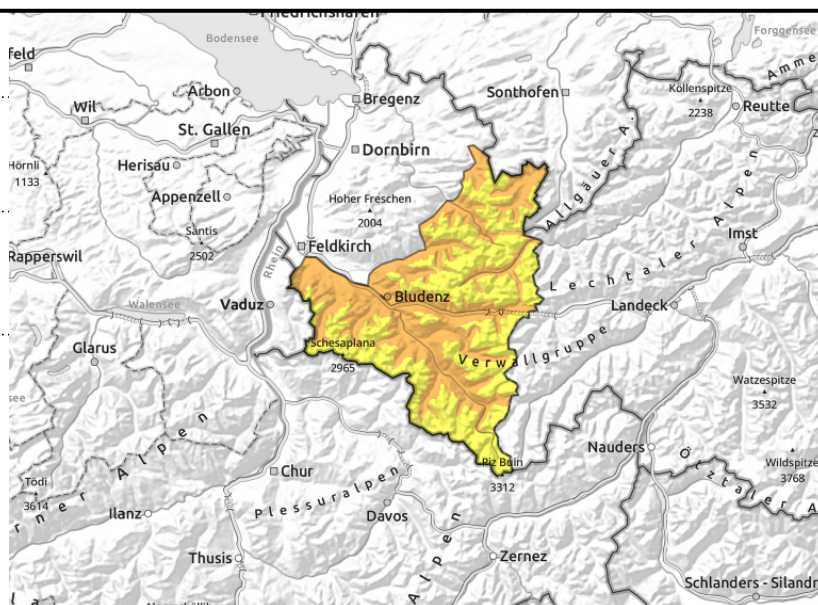
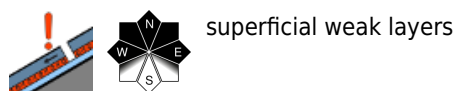
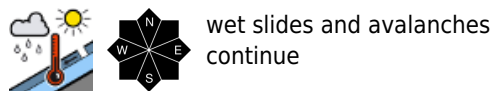
Danger ratings



Expositions



Lechquellengebirge, Lechtaler Alpen, Verwall, Rätikon West, Rätikon Ost, Silvretta, Allgäuer Alpen



Due to lack of outgoing radiation and nighttime rain, unfavorable conditions. Slight rise in avalanche danger due to fresh snow and fresh snowdrifts.

Some fresh snow is expected overnight above 1600 m, with wind-impact, new snowdrift accumulations will be generated, also glide-snow avalanches are possible. In isolated cases avalanches can fracture down to more deeply embedded layers inside the snowpack and grow to larger size. The old snowpack is thoroughly wet up to high altitudes. Shower-like thunderstorms are expected, heightening the likelihood of naturally triggered avalanches. At high altitudes the fresh snow is bonding with the old snowpack. At low and intermediate altitudes the ground is often bare.

Snowpack structure

At night the temperatures will drop, fresh snow is expected down to 1600 m. Wind impact will generate new snowdrift accumulations. The old snowpack is thoroughly wet up to high altitudes, near-surface layers are still prone to triggering. On steep shady slopes above 2400 m there are faceted unfavourable layers in the old snowpack, mostly triggerable by large additional loading.

Weather

Nocturnal hours: showers from the west in the evening are likely, in the nighttime hours widespread rainfall, the snowfall level descending to 1600 m. Monday: final precipitation will move eastwards, clouds will disperse, sunshine is possible but gray skies will persist in the moist westerly air current. Repeated bouts of rain or snow, snowfall level at 1500 m. At 2000 m: -2 degrees. Brisk W/NW winds.

Outlook

Late winter conditions. Showerlike snowfall above 1200 m. Higher up, avalanche danger levels could increase due to fresh snowfall.

Translated by Jeffrey McCabe, www.creativtrans.com

Avalanche problems



Danger ratings



Expositions

