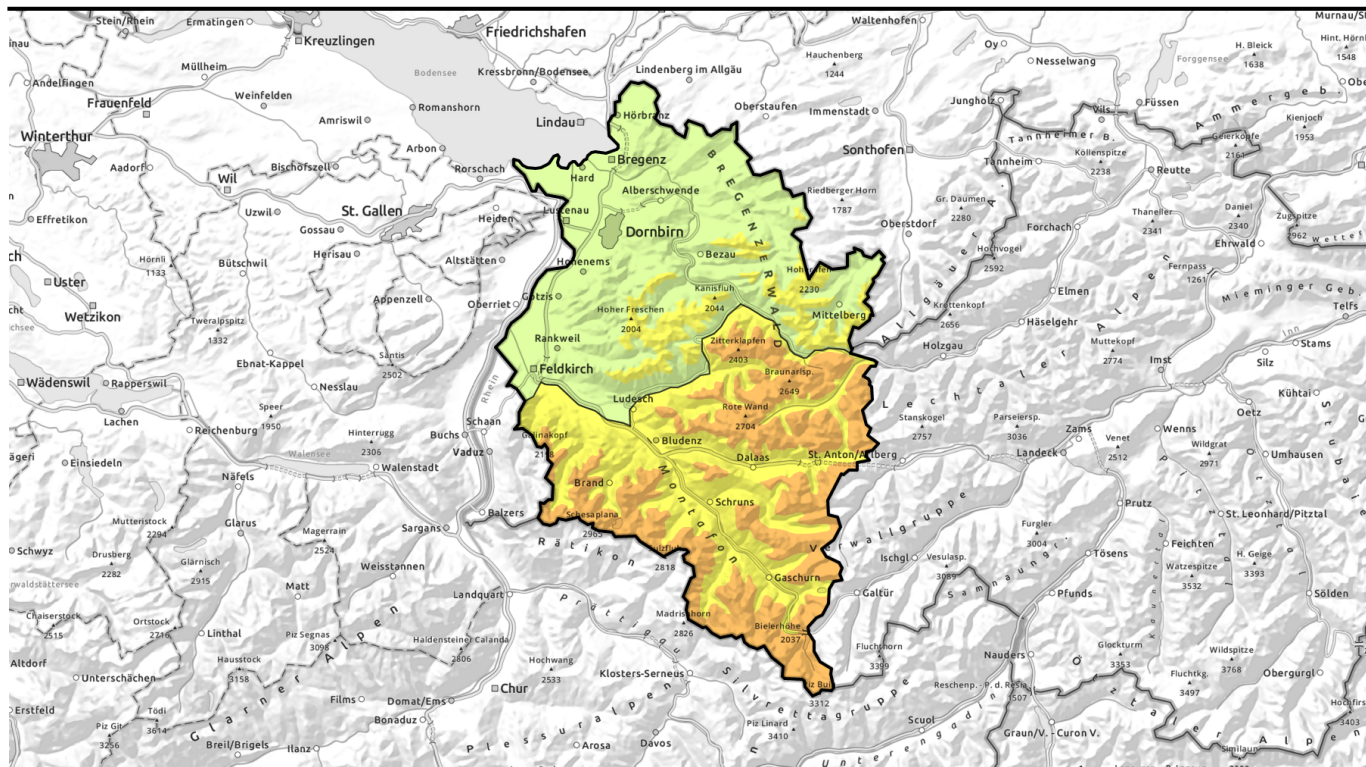


# Avalanche report for Thursday, 20.04.2023



## Rising avalanche danger due to fresh snow and wind

<p>1600 m</p>	<p>Voralpenbereich, Bregenzerwaldgebirge, Allgäuer Alpen</p>	
<p>2200 m</p>	<p>Lechquellengebirge, Lechtaler Alpen, Verwall, Rätikon West, Rätikon Ost, Silvretta</p>	

### Avalanche problems



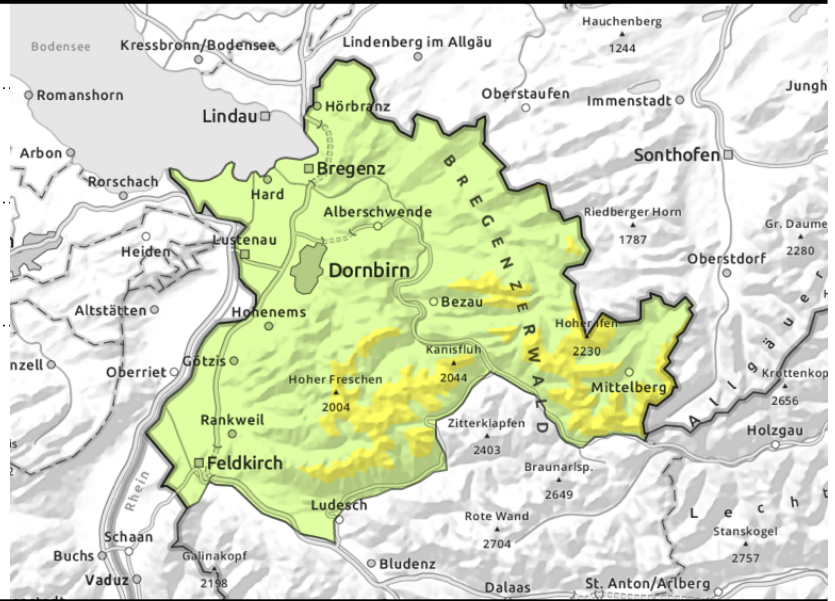
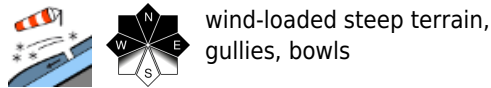
### Danger ratings



### Expositions



**Voralpenbereich, Bregenzerwaldgebirge, Allgäuer Alpen**



**Fresh, often trigger-sensitive snowdrift accumulations: caution!**

Due to fresh fallen snow and winds, snowdrift accumulations are being generated which are often prone to triggering. Danger zones increase with ascending altitude, esp. in steep shady terrain and wind-loaded gullies and bowls. Furthermore, avalanches can in some places be triggered by near-surface layers. Frequency and size of danger zones increase with ascending altitude. Naturally triggered glide-snow avalanches are possible in isolated cases.

**Snowpack structure**

Due to fresh snow and strong S/SW winds, fresh trigger-sensitive snowdrift accumulations are being generated. Over the next 24 hours, up to 20 cm of fresh snow is anticipated. The fresh snow and drifts will often be deposited atop a melt-freeze encrusted old snowpack surface, on north-facing slopes atop a loose old snowpack surface. As temperatures drop the danger of wet-snow avalanches will recede. Particularly on shady slopes the surface layers are still prone to triggering.

**Weather**

Nocturnal hours: overcast skies, snowfall above 900 m, focus on the northern barrier cloud regions, in Montafon it will remain dry. Thursday: late winter conditions with wind and snowfall, the peaks will be shrouded in fog, poor visibility in most regions. The snowfall level will ascend from 900 to 1500 m. At 2000 m: -5 degrees. Strong southerly winds.

**Outlook**

Early Friday morning, the snowfall will taper off, morning hours will be overcast, in the afternoon more sunshine is expected. Starting on Friday it will again become warm, the daytime rise in wet-snow avalanche danger is again come to the forefront.

**Avalanche problems**



**Danger ratings**



**Expositions**

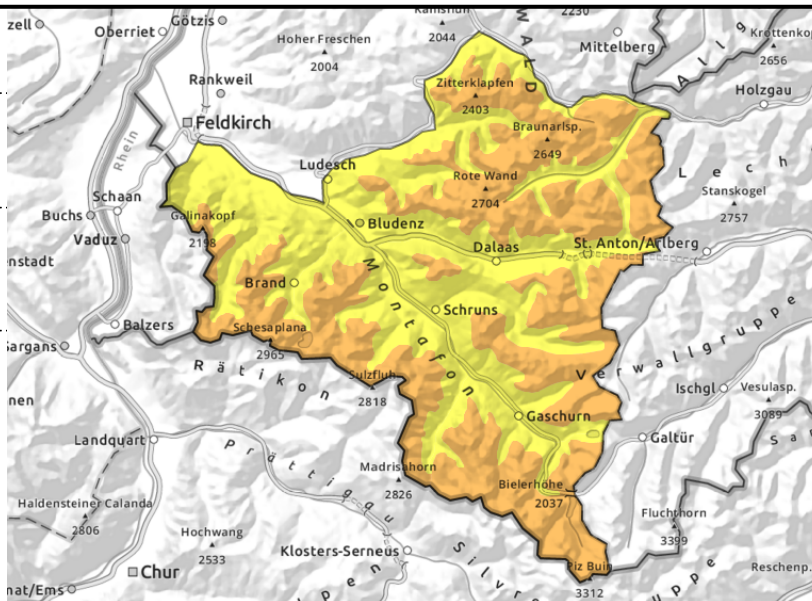


# Avalanche report for Thursday, 20.04.2023

Lechquellengebirge, Lechtaler Alpen, Verwall, Rätikon West, Rätikon Ost, Silvretta



wind-loaded steep terrain, gullies, bowls



## Fresh, often trigger-sensitive snowdrift accumulations: caution!

Due to fresh fallen snow and winds, snowdrift accumulations are being generated which are often prone to triggering. Danger zones increase with ascending altitude, esp. in steep shady terrain and wind-loaded gullies and bowls. Furthermore, avalanches can in some places be triggered by near-surface layers. Frequency and size of danger zones increase with ascending altitude. Naturally triggered glide-snow avalanches are possible in isolated cases.

### Snowpack structure

Due to fresh snow and strong S/SW winds, fresh trigger-sensitive snowdrift accumulations are being generated. Over the next 24 hours, up to 20 cm of fresh snow is anticipated. The fresh snow and drifts will often be deposited atop a melt-freeze encrusted old snowpack surface, on north-facing slopes atop a loose old snowpack surface. As temperatures drop the danger of wet-snow avalanches will recede. Particularly on shady slopes the surface layers are still prone to triggering.

### Weather

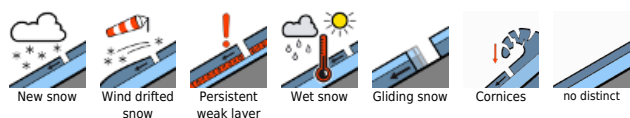
Nocturnal hours: overcast skies, snowfall above 900 m, focus on the northern barrier cloud regions, in Montafon it will remain dry. Thursday: late winter conditions with wind and snowfall, the peaks will be shrouded in fog, poor visibility in most regions. The snowfall level will ascend from 900 to 1500 m. At 2000 m: -5 degrees. Strong southerly winds.

### Outlook

Early Friday morning, the snowfall will taper off, morning hours will be overcast, in the afternoon more sunshine is expected. Starting on Friday it will again become warm, the daytime rise in wet-snow avalanche danger is again come to the forefront.

Translated by Jeffrey McCabe, [www.creativtrans.com](http://www.creativtrans.com)

#### Avalanche problems



#### Danger ratings



#### Expositions

