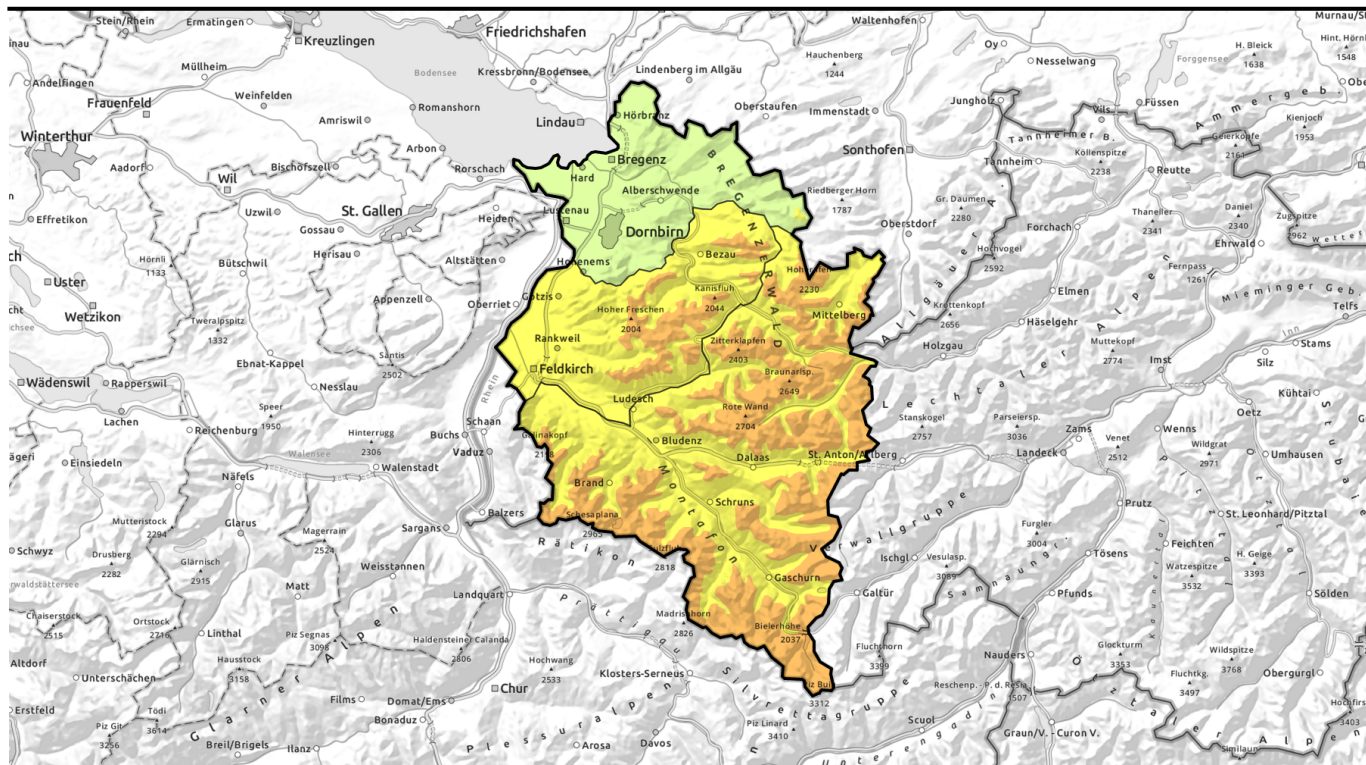


# Avalanche report for Sunday, 16.04.2023



## Main danger: fresh snow and snowdrifts. Considerable danger above 1800 m

	1600 m	Voralpenbereich		
	1800 m	Lechquellengebirge, Lechtaler Alpen, Verwall, Rätikon West, Rätikon Ost, Silvretta, Allgäuer Alpen		
	1800 m	Bregenzerwaldgebirge		

### Avalanche problems

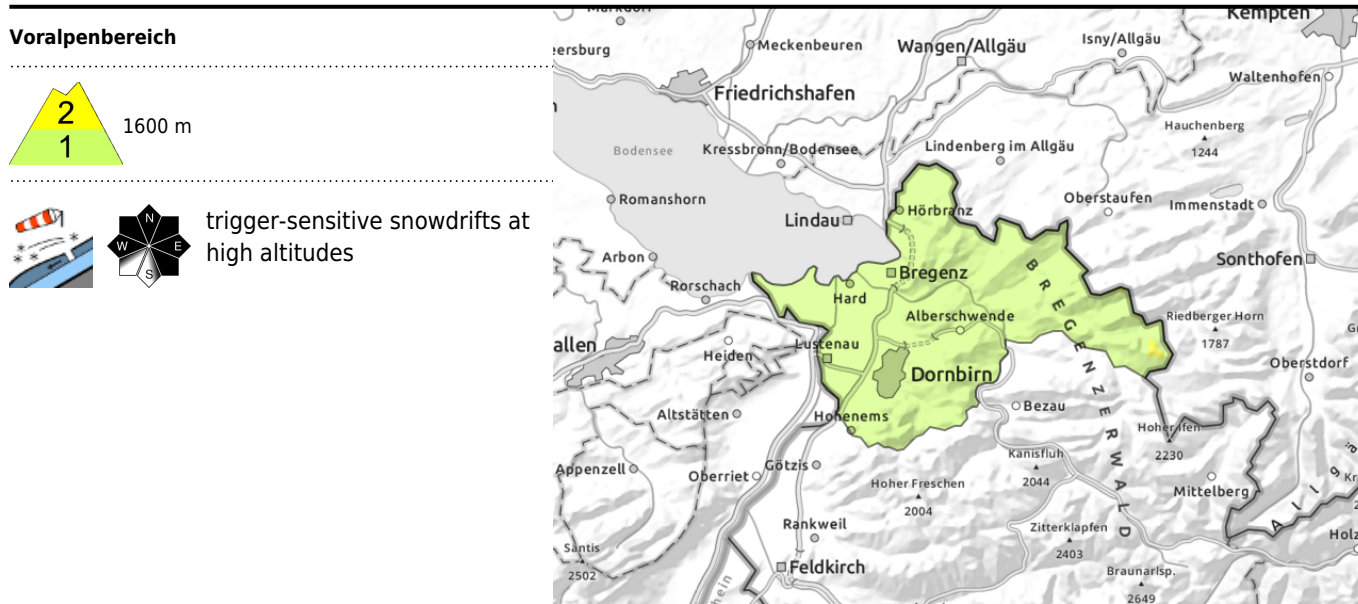


### Danger ratings



### Expositions





## Fresh snow and snowdrifts with ascending altitude prone to triggering

Fresh fallen snow are increasingly prone to triggering with ascending altitude, can be triggered as a slab or a loose-snow avalanche even by one sole skier, esp. near ridgelines and in wind-loaded gullies and bowls. Frequency and size of danger zones increase during the day, and with ascending altitude. Naturally triggered: small slides and loose-snow avalanches in very steep terrain.

### Snowpack structure

In the coming 24 hours there will be 20-25 cm of fresh snow registered, often amid wind-impact. Fresh snow and drifts will be prone to triggering, lie deposited atop a mostly compact old snowpack surface, bonding well lately and stabilizing.

### Weather

Nocturnal hours: gray nighttime skies, rainfall and snowfall will be heavy, snowfall level mostly at 700-1000 m. Sunday: wintery again, reduced visibility, heavy clouds, snowfall, heavy in the morning hours, slackening off in the afternoon, then again intensifying in the evening. Cold. At 2000 m: -3 degrees. Initially brisk northerly winds, later easing.

### Outlook

Still uncertain how much fresh snow will arrive on Sunday night, perhaps lots. Avalanche danger remains tense.

#### Avalanche problems



#### Danger ratings

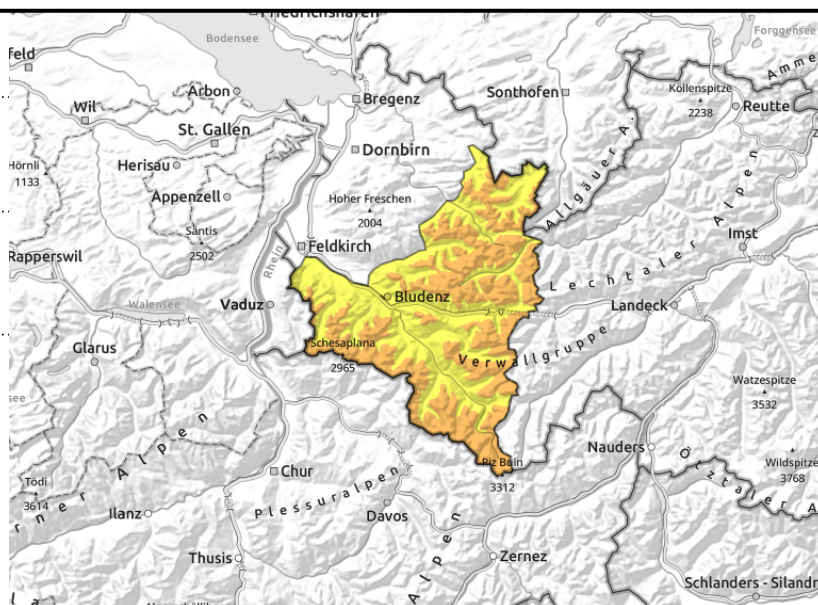
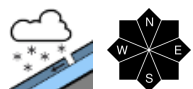
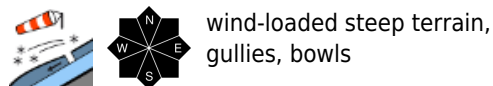


#### Expositions



# Avalanche report for Sunday, 16.04.2023

Lechquellengebirge, Lechtaler Alpen, Verwall, Rätikon West, Rätikon Ost, Silvretta, Allgäuer Alpen



## Considerable avalanche danger at high altitudes due to fresh snow and drifts

Fresh fallen snow are increasingly prone to triggering with ascending altitude, can be triggered as a slab or a loose-snow avalanche even by one sole skier, esp. near ridgelines and in wind-loaded gullies and bowls. Frequency and size of danger zones increase during the day, and with ascending altitude. Naturally triggered: small slides and loose-snow avalanches in very steep terrain.

### Snowpack structure

In the coming 24 hours there will be 25-35 cm of fresh snow registered, often amid wind-impact. Fresh snow and drifts will be prone to triggering, lie deposited atop a mostly compact old snowpack surface, bonding well lately and stabilizing. Glide cracks and reports from winter sports enthusiasts confirm the trigger-sensitivity of the snowpack. Danger zones increase in size and frequency with ascending altitude. Esp in shady steep terrain at high altitudes, unfavourable layers have persisted, mostly triggerable by large additional loading.

### Weather

Nocturnal hours: gray nighttime skies, rainfall and snowfall will be heavy, snowfall level mostly at 700-1000 m. Sunday: wintery again, reduced visibility, heavy clouds, snowfall, heavy in the morning hours, slackening off in the afternoon, then again intensifying in the evening. Cold. At 2000 m: -3 degrees. Initially brisk northerly winds, later easing.

### Outlook

Still uncertain how much fresh snow will arrive on Sunday night, perhaps lots. Avalanche danger remains tense.

#### Avalanche problems

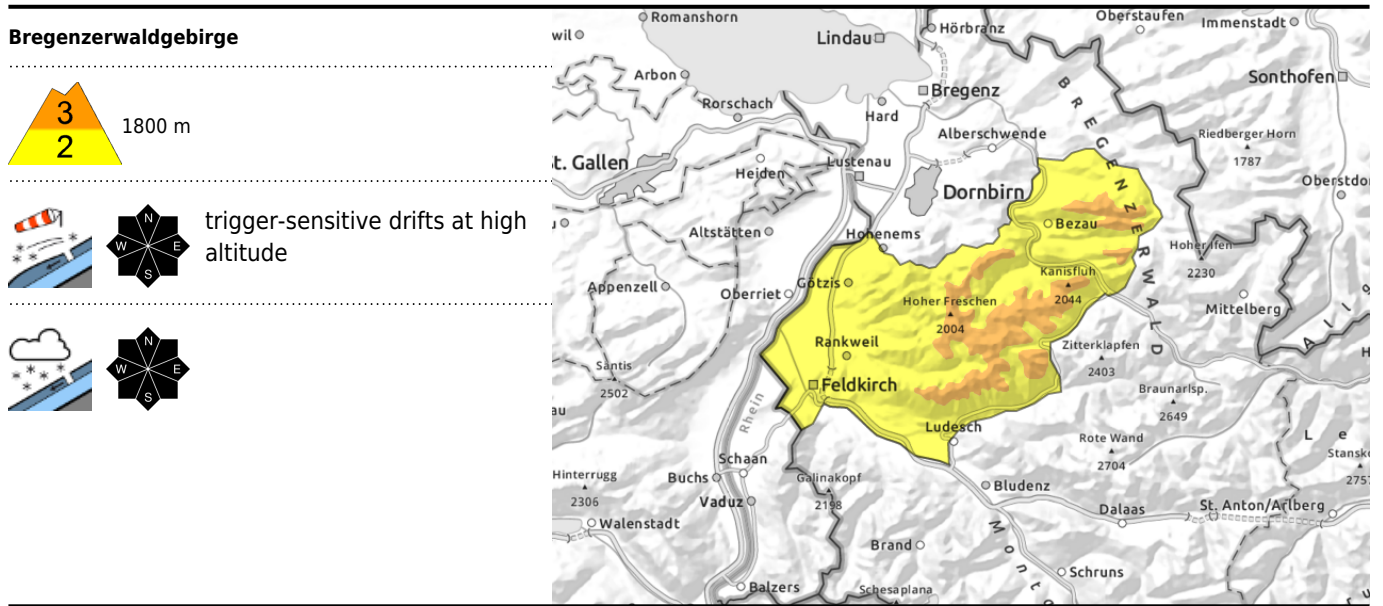


#### Danger ratings



#### Expositions





## Fresh snowdrifts at high altitudes are prone to triggering

Fresh fallen snow are increasingly prone to triggering with ascending altitude, can be triggered as a slab or a loose-snow avalanche even by one sole skier, esp. near ridgelines and in wind-loaded gullies and bowls. Frequency and size of danger zones increase during the day, and with ascending altitude. Naturally triggered: small slides and loose-snow avalanches in very steep terrain.

### Snowpack structure

In the coming 24 hours there will be 25-35 cm of fresh snow registered, often amid wind-impact. Fresh snow and drifts will be prone to triggering, lie deposited atop a mostly compact old snowpack surface, bonding well lately and stabilizing. In the last 72 hours there has been 60-70 cm of fresh snow registered, more from place to place. Glide cracks and reports from winter sports enthusiasts confirm the trigger-sensitivity of the snowpack. Danger zones increase in size and frequency with ascending altitude. Esp. in shady steep terrain at high altitudes, unfavourable layers have persisted, mostly triggerable by large additional loading.

### Weather

Nocturnal hours: gray nighttime skies, rainfall and snowfall will be heavy, snowfall level mostly at 700-1000 m. Sunday: wintery again, reduced visibility, heavy clouds, snowfall, heavy in the morning hours, slackening off in the afternoon, then again intensifying in the evening. Cold. At 2000 m: -3 degrees. Initially brisk northerly winds, later easing.

### Outlook

Still uncertain how much fresh snow will arrive on Sunday night, perhaps lots. Avalanche danger remains tense.

Translated by Jeffrey McCabe, [www.creativtrans.com](http://www.creativtrans.com)

#### Avalanche problems



#### Danger ratings



#### Expositions

