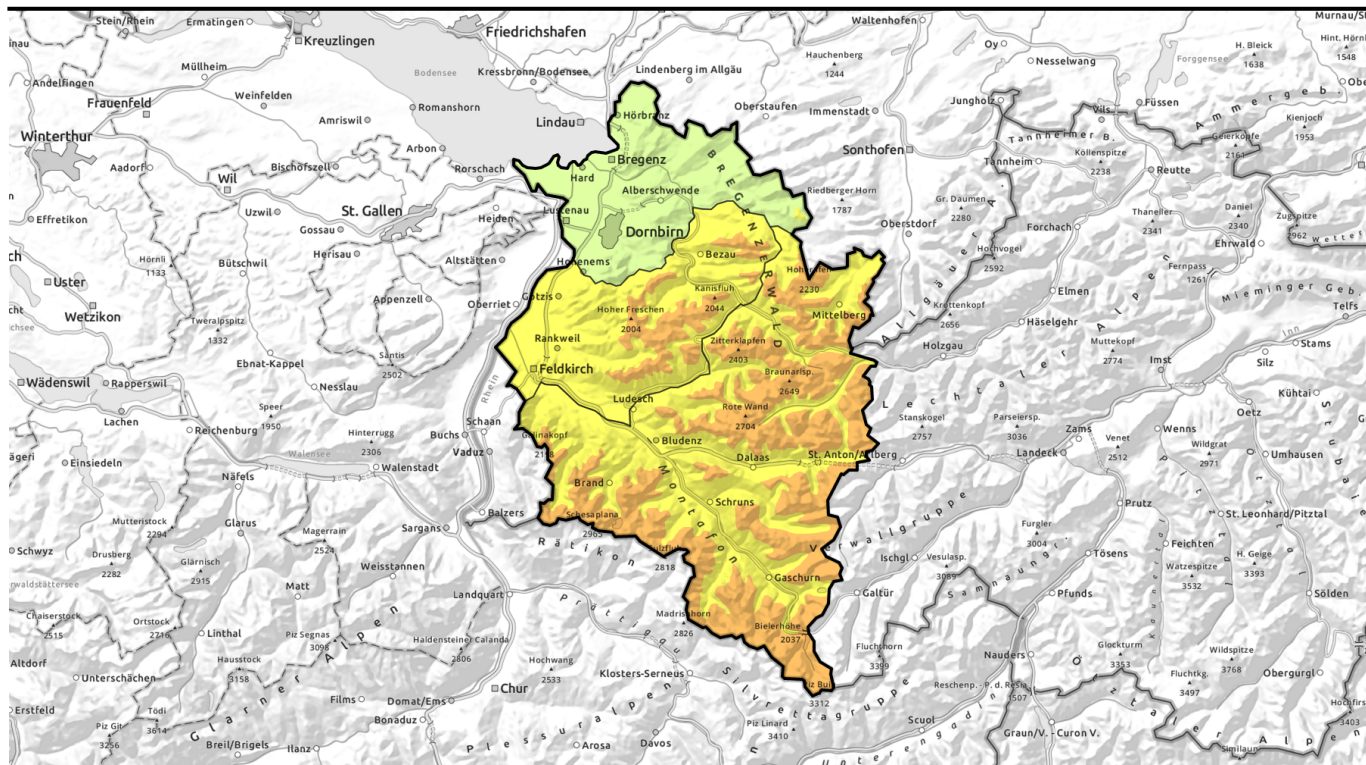


Avalanche report for Saturday, 15.04.2023



Main danger: fresh snow and snowdrifts. Considerable danger above 1800 m

	1600 m	Voralpenbereich				
	1800 m	Lechquellengebirge, Lechtaler Alpen, Verwall, Rätikon West, Rätikon Ost, Silvretta, Allgäuer Alpen				
	1800 m	Bregenzerwaldgebirge				

Avalanche problems

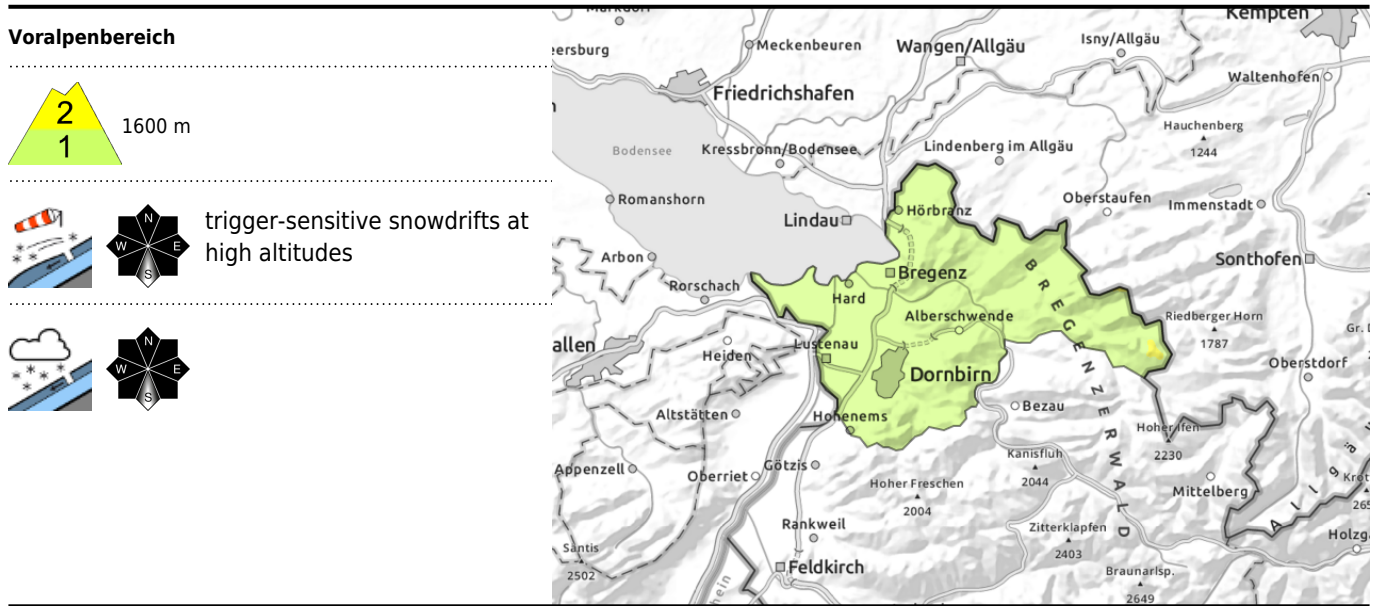


Danger ratings



Expositions





Fresh snow and snowdrifts with ascending altitude prone to triggering

Fresh fallen snow are increasingly prone to triggering with ascending altitude, can be triggered as a slab or a loose-snow avalanche even by one sole skier, esp. near ridgelines and in wind-loaded gullies and bowls. Frequency and size of danger zones increase during the day, and with ascending altitude. Naturally triggered: small slides and loose-snow avalanches in very steep terrain.

Snowpack structure

In the last 24 hours there has been 15-25 cm of fresh snow registered, often amid wind-impact. Fresh snow and drifts are often prone to triggering, lie deposited atop a mostly compact old snowpack surface (on shady high-altitude slopes atop soft layers, poorly bonded). Fresh drifts will be generated at high altitudes which are prone to triggering.

Weather

Nocturnal hours: Friday night will be dry, the skies clear or only with few clouds. Saturday: mostly dry in the morning, amid high-altitude clouds. In the afternoon more cloud cover will move in, winds will intensify, snowfall will set in over widespread areas. It is still quite cold for this juncture of the season. At 2000 m: -3 degrees. Light to moderate winds, intensifying in the afternoon, from northwest.

Outlook

On Sunday, moderate wind influence, snowfall will set in above 900-1300m. On Monday it will turn increasingly sunny and milder. Avalanche danger will remain tense.

Avalanche problems



Danger ratings



Expositions

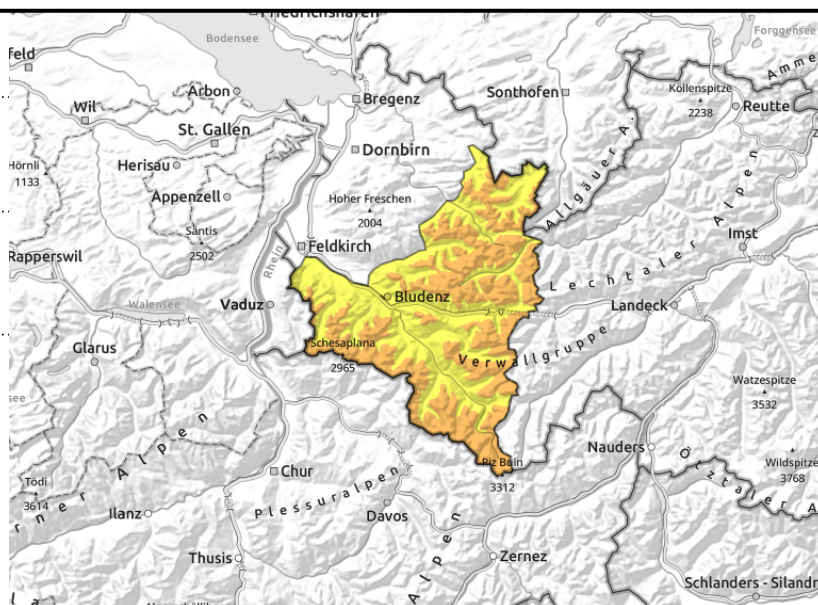
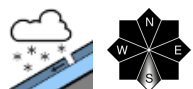


Avalanche report for Saturday, 15.04.2023

Lechquellengebirge, Lechtaler Alpen, Verwall, Rätikon West, Rätikon Ost, Silvretta, Allgäuer Alpen



wind-loaded steep terrain, gullies, bowls



Considerable avalanche danger at high altitudes due to fresh snow and drifts

Fresh fallen snow are increasingly prone to triggering with ascending altitude, can be triggered as a slab or a loose-snow avalanche even by one sole skier, esp. near ridgelines and in wind-loaded gullies and bowls. Frequency and size of danger zones increase during the day, and with ascending altitude. Naturally triggered: small slides and loose-snow avalanches in very steep terrain.

Snowpack structure

In the last 24 hours there has been 15-25 cm of fresh snow registered, often amid wind-impact. Fresh snow and drifts are often prone to triggering, lie deposited atop a mostly compact old snowpack surface (on shady high-altitude slopes atop soft layers, poorly bonded). Fresh drifts will be generated at high altitudes which are prone to triggering. Danger zones increase in size and number with ascending altitude, esp. in steep shady terrain at high altitudes there are unfavourable layers inside the snowpack, most of which can be triggered only by large additional loading. At high altitudes, fresh trigger-sensitive snowdrift accumulations will be generated as of afternoon amid wind-impact. If fractures appear when you step onto the snowpack, that is an indication of danger.

Weather

Nocturnal hours: Friday night will be dry, the skies clear or only with few clouds. Saturday: mostly dry in the morning, amid high-altitude clouds. In the afternoon more cloud cover will move in, winds will intensify, snowfall will set in over widespread areas. It is still quite cold for this juncture of the season. At 2000 m: -3 degrees. Light to moderate winds, intensifying in the afternoon, from northwest.

Outlook

On Sunday, moderate wind influence, snowfall will set in above 900-1300m. On Monday it will turn increasingly sunny and milder. Avalanche danger will remain tense.

Avalanche problems

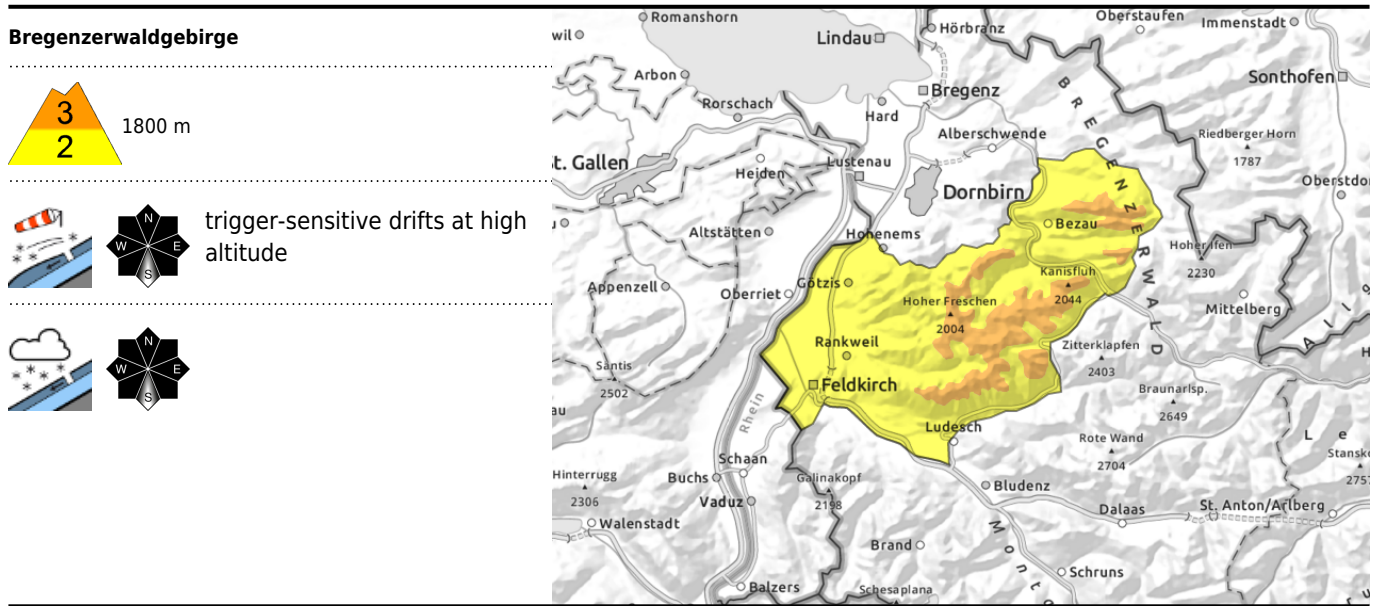


Danger ratings



Expositions





Fresh snowdrifts at high altitudes are prone to triggering

Fresh fallen snow are increasingly prone to triggering with ascending altitude, can be triggered as a slab or a loose-snow avalanche even by one sole skier, esp. near ridgelines and in wind-loaded gullies and bowls. Frequency and size of danger zones increase during the day, and with ascending altitude. Naturally triggered: small slides and loose-snow avalanches in very steep terrain.

Snowpack structure

In the last 24 hours there has been 15-25 cm of fresh snow registered, often amid wind-impact. Fresh snow and drifts are often prone to triggering, lie deposited atop a mostly compact old snowpack surface (on shady high-altitude slopes atop soft layers, poorly bonded). Fresh drifts will be generated at high altitudes which are prone to triggering.

Weather

Nocturnal hours: Friday night will be dry, the skies clear or only with few clouds. Saturday: mostly dry in the morning, amid high-altitude clouds. In the afternoon more cloud cover will move in, winds will intensify, snowfall will set in over widespread areas. It is still quite cold for this juncture of the season. At 2000 m: -3 degrees. Light to moderate winds, intensifying in the afternoon, from northwest.

Outlook

On Sunday, moderate wind influence, snowfall will set in above 900-1300m. On Monday it will turn increasingly sunny and milder. Avalanche danger will remain tense.

Translated by Jeffrey McCabe, www.creativtrans.com

Avalanche problems



Danger ratings



Expositions

