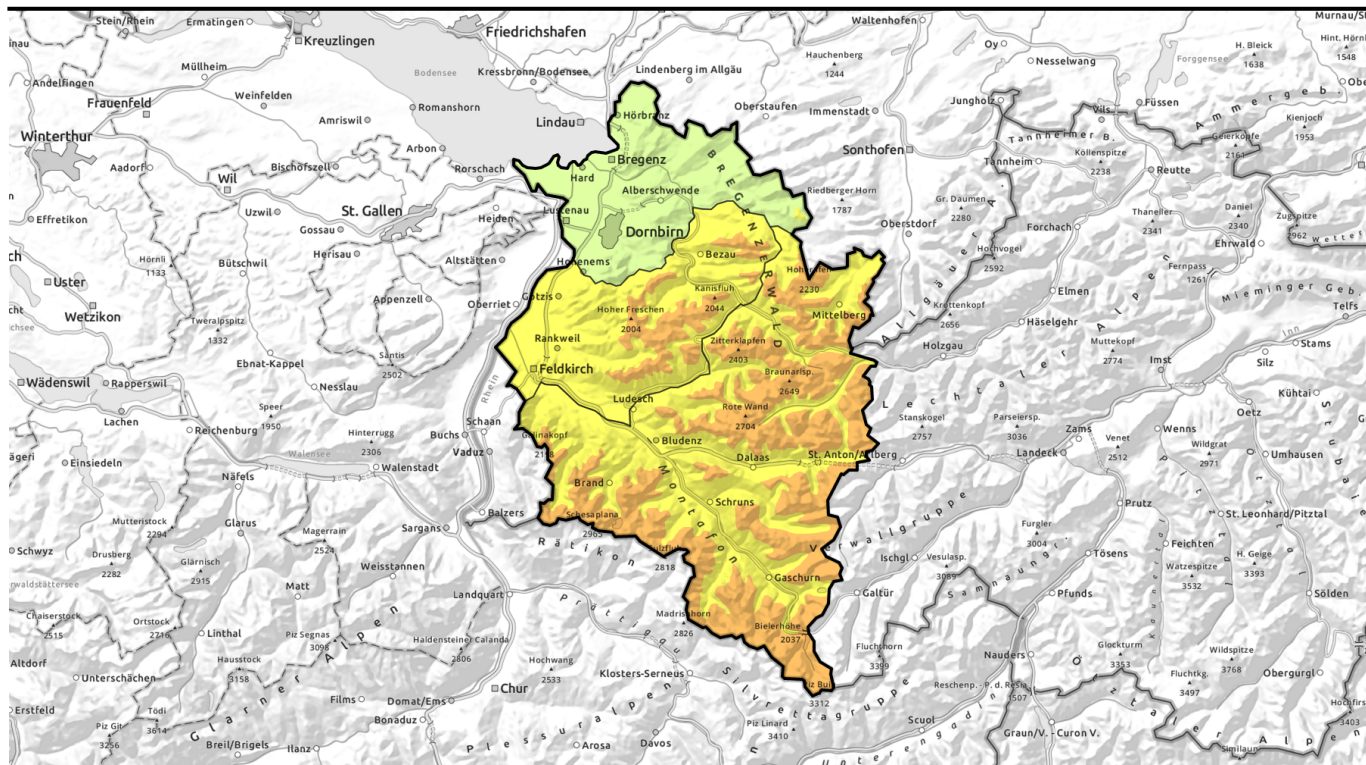


Avalanche report for Friday, 14.04.2023



UPDATE: more fresh snowfall plus wind-impact. Considerable danger above 1800 m

	1600 m	Voralpenbereich									
	1800 m	Lechquellengebirge, Lechtaler Alpen, Verwall, Rätikon West, Rätikon Ost, Silvretta, Allgäuer Alpen									
	1800 m	Bregenzerwaldgebirge									

Avalanche problems

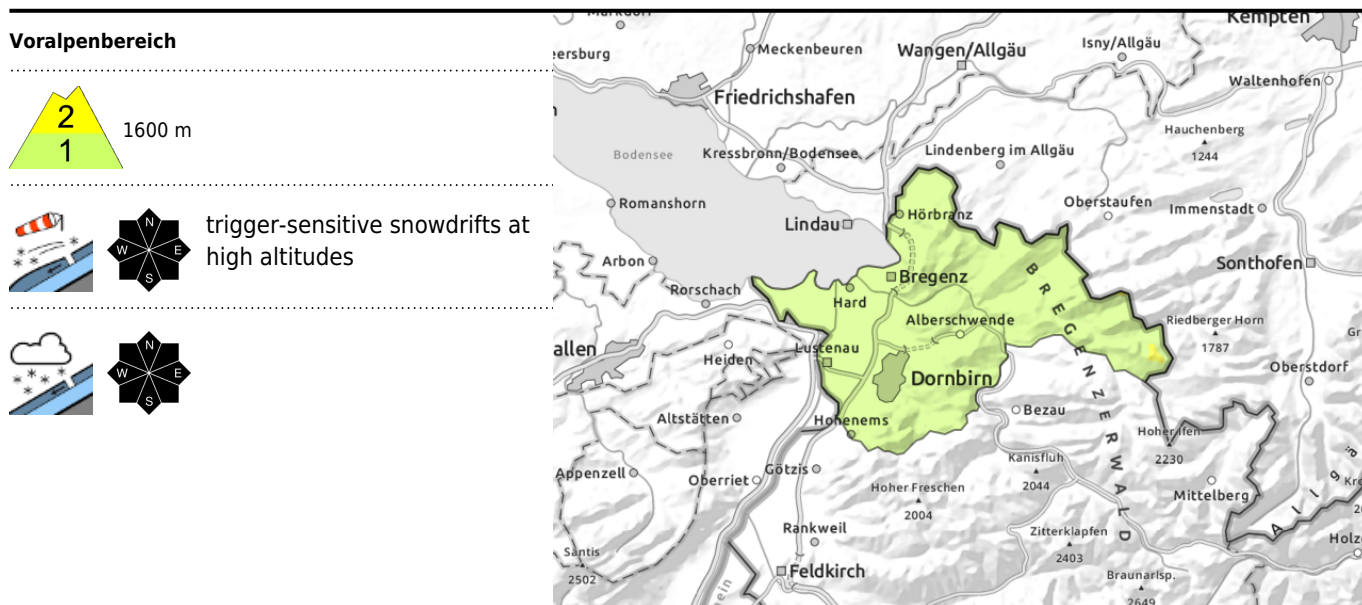


Danger ratings



Expositions





Fresh snowdrifts at high altitudes are prone to triggering

Fresh fallen snow are increasingly prone to triggering with ascending altitude, can be triggered as a slab or a loose-snow avalanche even by one sole skier, esp. near ridgelines and in wind-loaded gullies and bowls. Frequency and size of danger zones increase during the day, and with ascending altitude. Naturally triggered: small slides and loose-snow avalanches in very steep terrain.

Snowpack structure

By Friday evening, 10-25 cm of fresh snow expected amid moderate wind impact. Fresh snow and drifts are often prone to triggering, lie deposited atop a mostly compact old snowpack surface (on shady high-altitude slopes atop soft layers, poorly bonded). Fresh drifts will be generated at high altitudes which are prone to triggering.

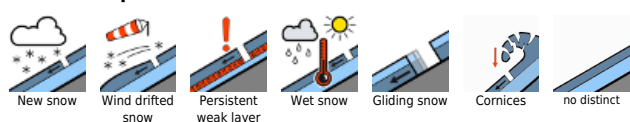
Weather

Until midday, snowfall (slowly tapering off) will limit visibility and bring a bit more fresh snow. In the afternoon it will be dry, clouds will disperse, by evening a bit of sunshine is possible. Temperatures will remain low, winds will be light. At 2000 m: -5 degrees. Light to moderate northerly winds.

Outlook

Widespread snowfall will set in during Saturday afternoon, winds will intensify, snowfall will continue over into Sunday. The avalanche situation will remain tense.

Avalanche problems



Danger ratings



Expositions

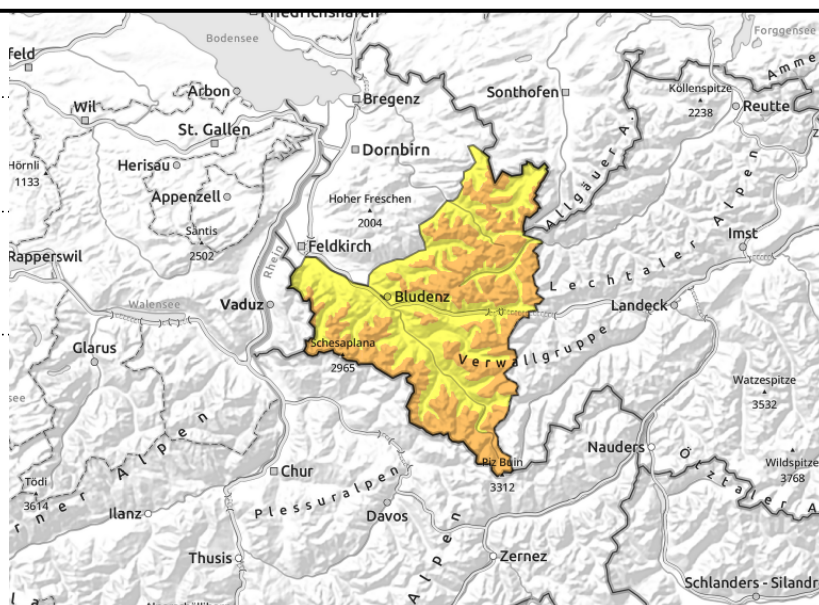
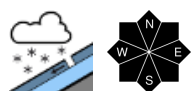


Avalanche report for Friday, 14.04.2023

Lechquellengebirge, Lechtaler Alpen, Verwall, Rätikon West, Rätikon Ost, Silvretta, Allgäuer Alpen



wind-loaded steep terrain, gullies, bowls



Considerable avalanche danger at high altitudes due to fresh snow and drifts

Fresh fallen snow are increasingly prone to triggering with ascending altitude, can be triggered as a slab or a loose-snow avalanche even by one sole skier, esp. near ridgelines and in wind-loaded gullies and bowls. Frequency and size of danger zones increase during the day, and with ascending altitude. Naturally triggered: small slides and loose-snow avalanches in very steep terrain.

Snowpack structure

There has been 20-35 cm of fresh snow amid moderate wind impact. Fresh snow and drifts are often prone to triggering, lie deposited atop a mostly compact old snowpack surface (on shady high-altitude slopes atop soft layers, poorly bonded). Fresh drifts will be generated at high altitudes which are prone to triggering.

Weather

Until midday, snowfall (slowly tapering off) will limit visibility and bring a bit more fresh snow. In the afternoon it will be dry, clouds will disperse, by evening a bit of sunshine is possible. Temperatures will remain low, winds will be light. At 2000 m: -5 degrees. Light to moderate northerly winds.

Outlook

Widespread snowfall will set in during Saturday afternoon, winds will intensify, snowfall will continue over into Sunday. The avalanche situation will remain tense.

Avalanche problems

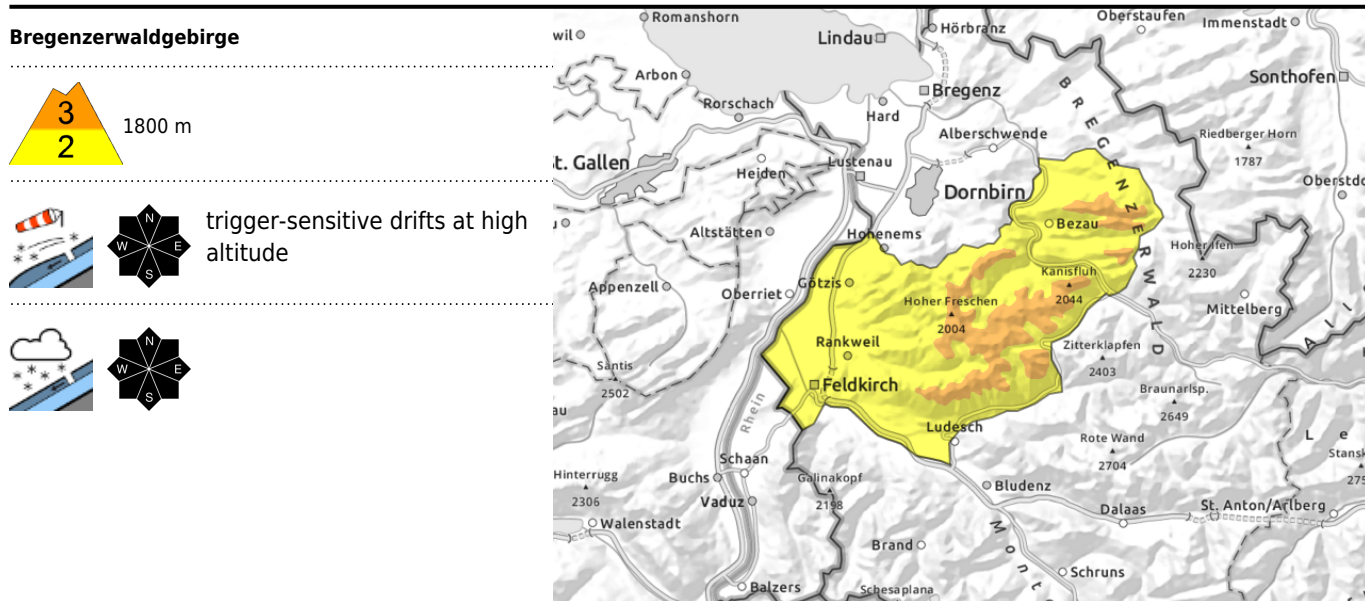


Danger ratings



Expositions





Fresh snowdrifts at high altitudes are prone to triggering

Fresh fallen snow are increasingly prone to triggering with ascending altitude, can be triggered as a slab or a loose-snow avalanche even by one sole skier, esp. near ridgelines and in wind-loaded gullies and bowls. Frequency and size of danger zones increase during the day, and with ascending altitude. Naturally triggered: small slides and loose-snow avalanches in very steep terrain.

Snowpack structure

There has been 30-35 cm of fresh snow amid moderate wind impact. Fresh snow and drifts are often prone to triggering, lie deposited atop a mostly compact old snowpack surface (on shady high-altitude slopes atop soft layers, poorly bonded). Fresh drifts will be generated at high altitudes which are prone to triggering.

Weather

Until midday, snowfall (slowly tapering off) will limit visibility and bring a bit more fresh snow. In the afternoon it will be dry, clouds will disperse, by evening a bit of sunshine is possible. Temperatures will remain low, cool, winds will be light. At 2000 m: -5 degrees. Light to moderate northerly winds.

Outlook

Widespread snowfall will set in during Saturday afternoon, winds will intensify, snowfall will continue over into Sunday. The avalanche situation will remain tense.

Translated by Jeffrey McCabe, www.creativtrans.com

Avalanche problems



Danger ratings



Expositions

