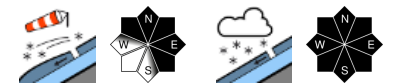


Considerable avalanche danger regionally due to fresh snow and drifts at high altitudes



1600 m

Voralpenbereich, Bregenerwaldgebirge

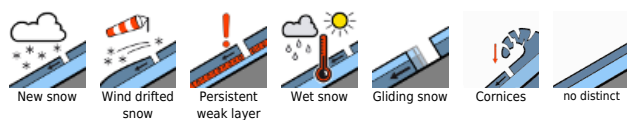


2000 m

Lechtalengebirge, Lechtaler Alpen, Verwall, Rätikon West, Rätikon Ost, Silvretta, Allgäuer Alpen



Avalanche problems



Danger ratings



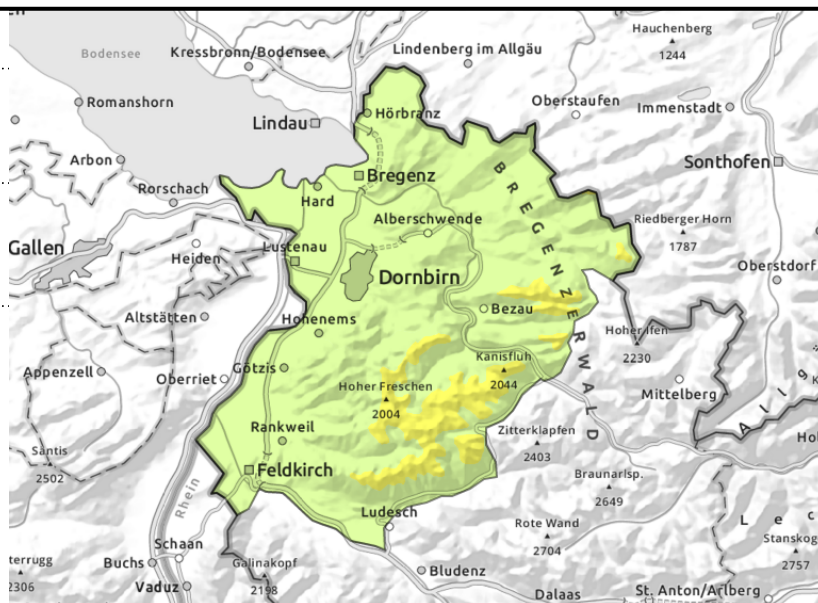
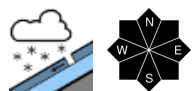
Expositions



Voralpenbereich, Bregenzerwaldgebirge



fresh snowdrifts at high altitudes.



Fresh snowdrifts at high altitudes are prone to triggering

Fresh fallen snow are increasingly prone to triggering with ascending altitude, can be triggered as a slab or a loose-snow avalanche even by one sole skier, esp. near ridgelines and in wind-loaded gullies and bowls. Frequency and size of danger zones increase during the day, and with ascending altitude. Naturally triggerable: only small slides and loose-snow avalanches in very steep terrain.

Snowpack structure

Forecast: 10-30 cm of fresh snow, deposited atop a compact old snowpack surface. Winds will generate new snowdrift accumulations at high altitudes, as snowfall continues these will be prone to triggering. On shady slopes at high altitudes the drifts will be deposited atop soft old snowpack layers, and will bond insufficiently with them

Weather

Nocturnal hours: heavy rainfall in the early part of the night, easing as morning approaches. The snowfall level will initially be 1400 m, then descend to 800 m by morning. Thursday: wintery conditions, some snowfall, clouds, fog, reduced visibility. At 2000 m: -5 degrees. Light to moderate northerly winds.

Outlook

Variable conditions will persist. The danger of dry snow avalanches is not expected to change significantly.

Avalanche problems



Danger ratings



Expositions

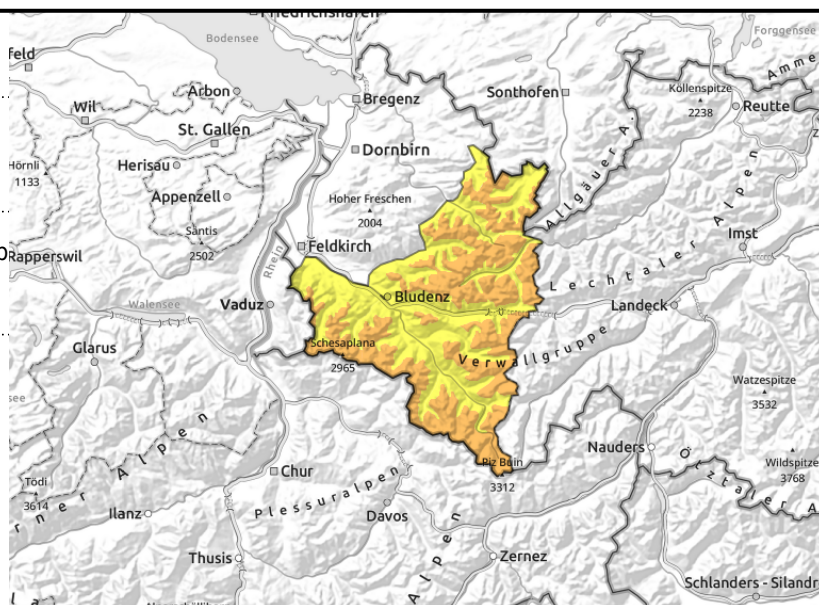
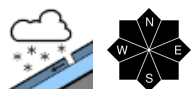


Avalanche report for **Thursday, 13.04.2023**

Lechquellengebirge, Lechtaler Alpen, Verwall, Rätikon West, Rätikon Ost, Silvretta, Allgäuer Alpen



>appx.2000: wind-loaded steep terrain, gullies, bowls



Considerable avalanche danger at high altitudes due to fresh snow and drifts

During the course of the day, danger will rise to “considerable” - fresh snow and drifts are prone to triggering. Danger zones increase with ascending altitude on shady slopes, small-to-medium sized avalanches can be triggered by one single winter sports enthusiast. If a release fractures down to a more deeply embedded layer the avalanche can grow to large size. Activities in backcountry terrain require experience in assessing risks on-site. Naturally triggered slides and loose-snow avalanches are possible in very steep terrain.

Snowpack structure

Forecast: 20-40 cm of fresh snow, deposited atop a compact old snowpack surface. Winds will generate new snowdrift accumulations at high altitudes, as snowfall continues these will be prone to triggering. On shady slopes at high altitudes the drifts will be deposited atop soft old snowpack layers, and will bond insufficiently with them

Weather

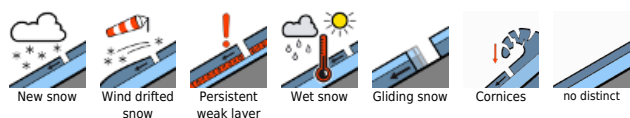
Nocturnal hours: heavy rainfall in the early part of the night, easing as morning approaches. The snowfall level will initially be 1400 m, then descend to 800 m by morning. Thursday: wintery conditions, some snowfall, clouds, fog, reduced visibility. At 2000 m: -5 degrees. Light to moderate northerly winds.

Outlook

Variable conditions will persist. The danger of dry snow avalanches is not expected to change significantly.

Translated by Jeffrey McCabe, www.creativtrans.com

Avalanche problems



Danger ratings



Expositions

