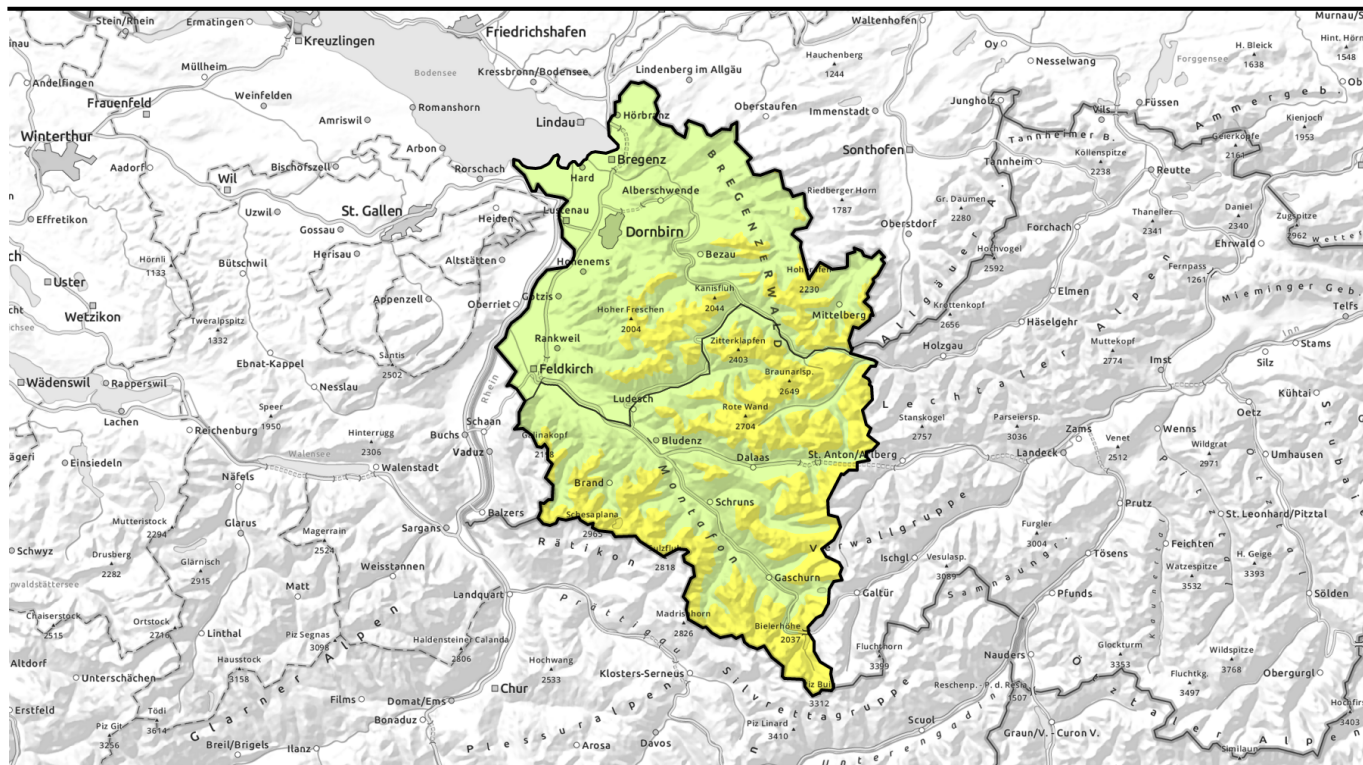


# Avalanche report for Tuesday, 11.04.2023



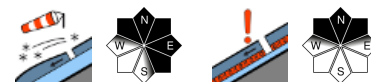
**Fresh snowdrifts at high altitudes. Wet snow at intermediate altitudes due to rain.**



Voralpenbereich, Bregenzerwaldgebirge, Allgäuer Alpen



Lechquellengebirge, Lechtaler Alpen, Verwall, Rätikon West, Rätikon Ost, Silvretta



### Avalanche problems



### Danger ratings



### Expositions

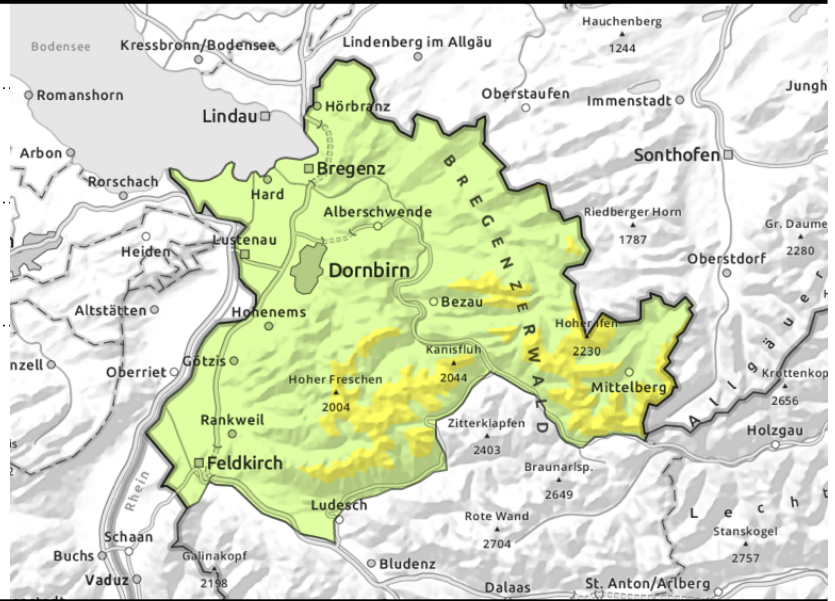


**Voralpenbereich, Bregenzerwaldgebirge, Allgäuer Alpen**



fresh snowdrift accumulations at high altitudes

in zones with rain impact



**Fresh snowdrifts at high altitudes. Wet snow at intermediate altitudes due to rain.**

Fresh fallen snow requires attentiveness at high altitudes, it can be triggered as a slab avalanche by one sole person, particularly in ridgeline terrain in NW/N/SE facing terrain and in wind-loaded gullies and bowls. Frequency and size of danger zones increases during the course of the day and with ascending altitude. In wind-impacted zones the snowpack is being weakened. Particularly on shady slopes, in zones which have not yet discharged at intermediate altitudes, naturally triggered loose-snow and (on smooth grassy slopes) glide-snow avalanches can be expected.

**Snowpack structure**

The snowpack beneath cloudy skies cannot muster sufficient outgoing nocturnal radiation and will become thoroughly wet on Tuesday as rainfall sets in. Precipitation will be accompanied by strong westerly winds, fresh snowdrift accumulations will be generated and increase during the course of the day. On shady slopes at high altitudes the drifts are particularly prone to triggering. The old snowpack is otherwise compact and stable. Below 1400 m there is hardly any snow on the ground.

**Weather**

Nocturnal hours: precipitation will set in during the latter part of the night, snowfall level at 1500 m. Tuesday: low-lying clouds, poor visibility, shower-like rain, snowfall level above 1500 m, more or less all day long. At 2000 m: 0 to -2 degrees. Brisk westerly winds.

**Outlook**

Wednesday will be variable with heavy cloud cover, showers as evening approaches. Often strong W/SW winds at high altitudes. The danger of dry-snow avalanches will increase over the next few days. The danger of wet-snow avalanches will recede.

**Avalanche problems**



**Danger ratings**



**Expositions**

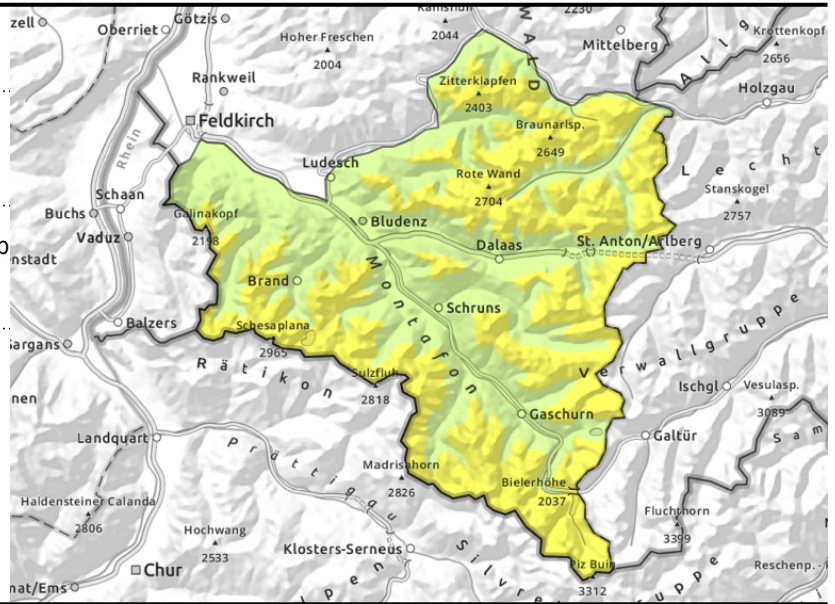


## Lechquellengebirge, Lechtaler Alpen, Verwall, Rätikon West, Rätikon Ost, Silvretta



>appx.2200: wind-loaded steep terrain, gullies, bowls

>appx.2400m: unfavourable intermediate layers



### Caution: snowdrift accumulations and persistent weak layer at high altitudes, Wet-snow avalanches due to rain impact

**Dry-snow avalanches:** danger zones increase with ascending altitude on steep shady terrain and in wind-loaded gullies and bowls. Triggerings mostly possible by large additional loading, but if they fracture to more deeply embedded layers they can sweep away the entire snowpack and grow to large size. Esp. in high alpine regions, small fresh drifts are prone to triggering in places. **Wet-snow avalanches:** naturally triggered releases are possible below 2400 m due to solar radiation and daytime temperatures rising. From E-S-W, moist slides and loose-snow avalanches as well as small-to-medium sized glide snow avalanches in all aspects on steep grass-covered slopes.

### Snowpack structure

As a result of fresh snow and wind, fresh fresh snowdrift accumulations will be generated and increase during the course of the day. On shady slopes at high altitudes the drifts are particularly prone to triggering. The old snowpack is otherwise compact and stable. Unfavorable layers persist, can be triggered by large additional loading. Where there is rain-impact the snowpack is weakened.

### Weather

Nocturnal hours: precipitation will set in during the latter part of the night, snowfall level at 1500 m. Tuesday: low-lying clouds, poor visibility, shower-like rain, snowfall level above 1500 m, more or less all day long. At 2000 m: 0 to -2 degrees. Brisk westerly winds.

### Outlook

Wednesday will be variable with heavy cloud cover, showers as evening approaches. Often strong W/SW winds at high altitudes. The danger of dry-snow avalanches will increase over the next few days. The danger of wet-snow avalanches will recede.

Translated by Jeffrey McCabe, [www.creativtrans.com](http://www.creativtrans.com)

### Avalanche problems



### Danger ratings



### Expositions

