

Predominantly favorable conditions continue: low-to-moderate avalanche danger at high altitudes

	Voralpenbereich, Bregenerwaldgebirge, Allgäuer Alpen	
	2200 m Lechquellengebirge, Lechtaler Alpen, Verwall, Rätikon West, Rätikon Ost, Silvretta	

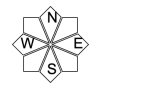
Avalanche problems



Danger ratings



Expositions



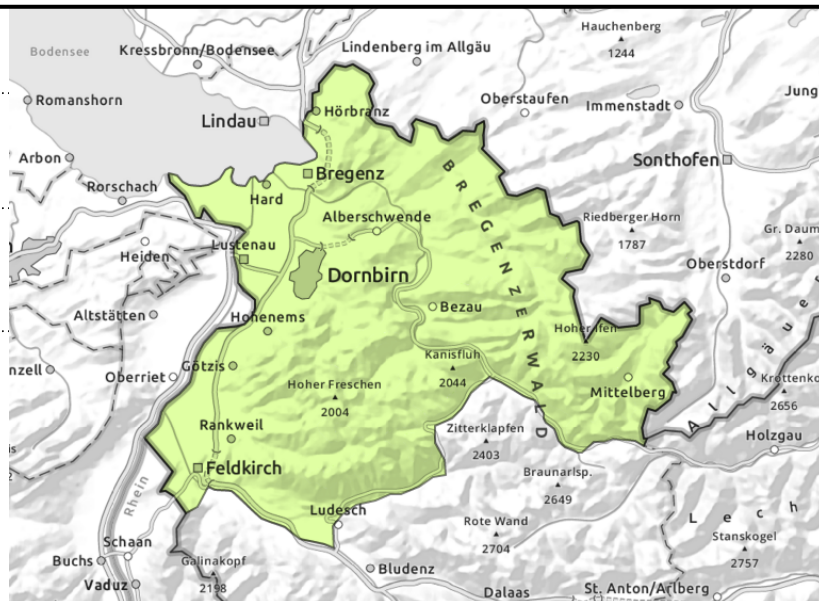
Voralpenbereich, Bregenzerwaldgebirge, Allgäuer Alpen



extremely steep terrain - especially on shady slopes



wet slides, small to medium sized glide-snow avalanches



Mostly low danger - moist slides and glide-snow avalanches

Mostly low avalanche danger prevails. Danger zones occur mostly in shady extremely steep terrain. Isolated small slab avalanches are possible by large additional loading. At high altitudes small snowdrift accumulations require attentiveness. Naturally triggered small slides are possible, on steep grassy slopes isolated small-to-medium glide-snow avalanches.

Snowpack structure

Recent fresh snow deposited atop a stable, below-average snowpack, well consolidated in the morning, softening only slightly later in the day. The snowpack fundament is thoroughly wet up to high altitudes, can glide over smooth ground in all aspects. Below 1200-1400 m there is not much snow on the ground.

Weather

Nocturnal hours: above 1000 m snow showers will slowly taper off. Sunday: residual clouds will disperse in the morning, sunshine will soon reign, visibility improve. Some residual or convective cloud might persist. Minor snow showers in the afternoon. At 2000 m: -4 degrees. Light to moderate NE winds.

Outlook

Easter Monday will be mostly sunny, high-altitude clouds will move in from the west during the afternoon. Danger of dry-snow avalanches will not change much, danger of wet-snow avalanches will increase.

Avalanche problems



Danger ratings



Expositions



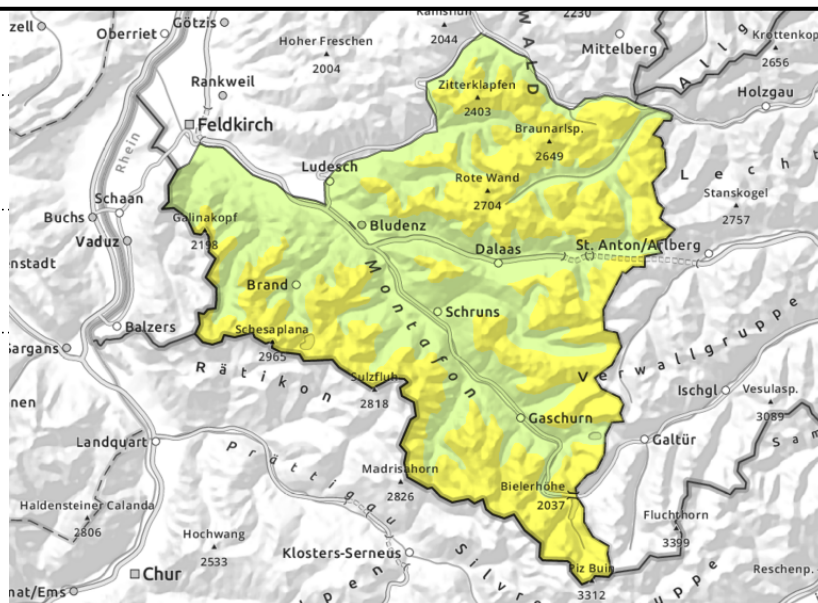
Lechquellengebirge, Lechtaler Alpen, Verwall, Rätikon West, Rätikon Ost, Silvretta



>appx.2200m: wind-loaded steep terrain, gullies, bowls



>appx.2200m: unfavourable intermediate layers



Caution: snowdrift accumulations and persistent weak layer at high altitudes, slides and loose-snow avalanches as a result of higher temperatures

Danger zones occur mostly in shady extremely steep terrain. Isolated small slab avalanches are possible by large additional loading. If fractures occur at deeply embedded layers of the snowpack, the old snowpack can be swept away and avalanches grow to large size. At high altitudes small snowdrift accumulations require attentiveness. Naturally triggered small slides are possible, on steep grassy slopes isolated small-to-medium glide-snow avalanches

Snowpack structure

Recent fresh snow deposited atop a stable, below-average snowpack, well consolidated in the morning, softening only slightly later in the day. The snowpack fundament is thoroughly wet up to high altitudes, can glide over smooth ground in all aspects. Below 1200-1400 m there is not much snow on the ground.

Weather

Nocturnal hours: above 1000 m snow showers will slowly taper off. Sunday: residual clouds will disperse in the morning, sunshine will soon reign, visibility improve. Some residual or convective cloud might persist. Minor snow showers in the afternoon. At 2000 m: -4 degrees. Light to moderate NE winds.

Outlook

Easter Monday will be mostly sunny, high-altitude clouds will move in from the west during the afternoon. Danger of dry-snow avalanches will not change much, danger of wet-snow avalanches will increase.

Translated by Jeffrey McCabe, www.creativtrans.com

Avalanche problems



Danger ratings



Expositions

