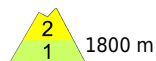
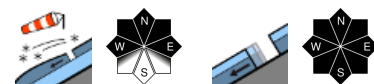


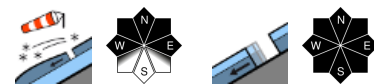
Fresh and older snowdrifts at high altitudes. Despite the cold, isolated glide-snow avalanches still possible.



Voralpenbereich, Bregenzerwaldgebirge, Allgäuer Alpen



Lechquellengebirge, Lechtaler Alpen, Verwall, Rätikon West, Rätikon Ost, Silvretta



Avalanche problems



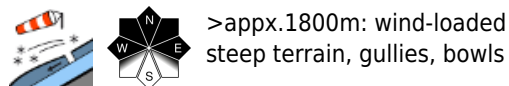
Danger ratings



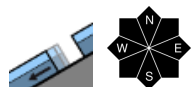
Expositions



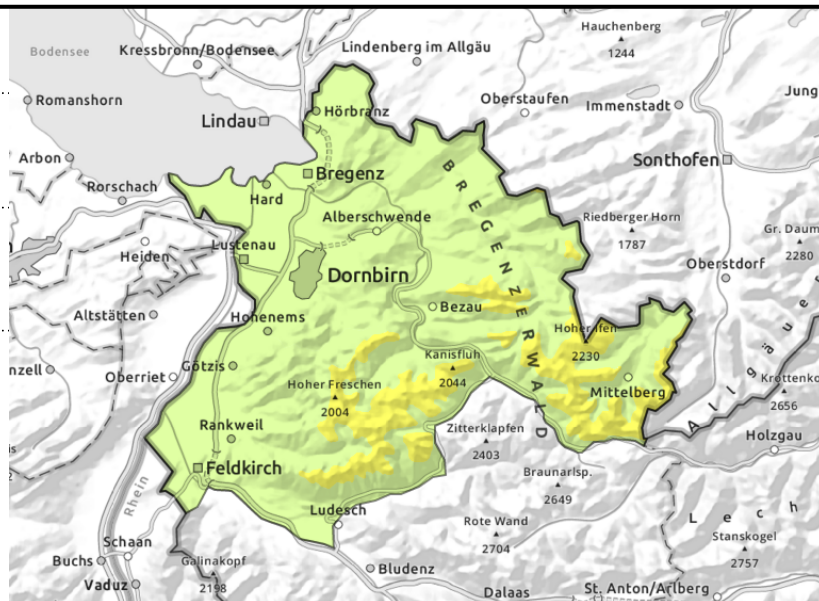
Voralpenbereich, Bregenzerwaldgebirge, Allgäuer Alpen



>appx.1800m: wind-loaded steep terrain, gullies, bowls



<appx.2200m: glide-snow avalanches



Moderate avalanche danger - fresh drifts at high altitudes

Main danger stems from fresh and older snowdrifts at high altitudes. Danger zones increase in size and frequency with ascending altitude. One sole person can trigger mostly small avalanches in steep ridgeline terrain, in wind-loaded gullies and bowls. Superficially triggered avalanches can sweep away the thoroughly wet old snowpack and grow to large size. The snowpack is wet up to 2200m, naturally triggered small-to-medium glide-snow avalanches are possible at any time of day or night. In steep rocky terrain, loose-snow avalanches are possible in case of more extended bright intervals.

Snowpack structure

Strong winds at high altitudes are transporting the snow, fresh and older snowdrifts increase in size and frequency with ascending altitude. Inside the fresh snow and drifts of recent days are weak layer with graupel. Bonding deteriorates with ascending altitude. The fundament is moist up to high altitudes, the snowpack can glide over the smooth ground. As temperatures drop the danger of wet-snow avalanches recedes. A melt-freeze crust has formed beneath the fresh snow. Superficially triggered avalanches can sweep away the thoroughly wet old snowpack and grow to large size. Not much snow below 1500m.

Weather

Nocturnal hours: cloud cover will move in from the northeast in the evening, rainfall or snowfall is possible during the nighttime hours as temperatures drop. In early morning in the northern regions, dry; in the southern regions light snowfall down to 900m. Monday: low-lying clouds to start with, some minor snowfall in the Bregenzer mountains. Cold NE winds will intensify. In the afternoon, clouds will disperse continually. At 2000 m: -4 degrees. Brisk to strong NE winds.

Outlook

On Tuesday, far-reaching sunny weather. From the north, clouds will move in later in the day. At 2000m: -7 degrees. Moderate to brisk N/NE winds. Avalanche danger will slowly diminish.

Avalanche problems



Danger ratings



Expositions



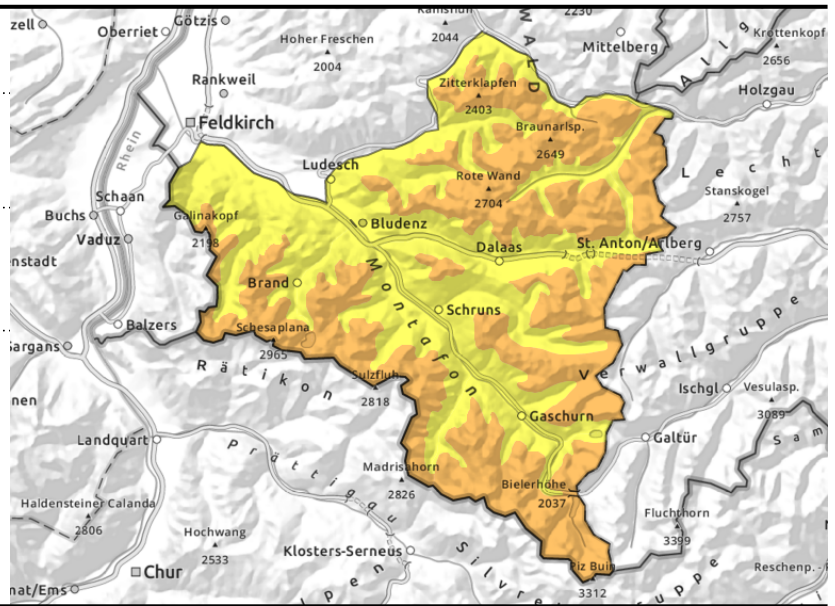
Avalanche report for Monday, 03.04.2023

Lechquellengebirge, Lechtaler Alpen, Verwall, Rätikon West, Rätikon Ost, Silvretta



>appx.1800m: wind-loaded steep terrain, gullies, bowls

<appx.2200m: glide-snow avalanches



Caution: fresh snowdrift accumulations at high altitudes

At high altitudes, fresh drifts are the main problem. Danger zones increase in size and frequency with ascending altitude. One sole person can trigger mostly small avalanches in steep ridgeline terrain, in wind-loaded gullies and bowls. Superficially triggered avalanches can sweep away the thoroughly wet old snowpack and grow to large size. The snowpack is wet up to 2200m, naturally triggered small-to-medium glide-snow avalanches are possible at any time of day or night. In steep rocky terrain, loose-snow avalanches are possible in case of more extended bright intervals.

Snowpack structure

Strong winds at high altitudes are transporting the snow, fresh and older snowdrifts increase in size and frequency with ascending altitude. Inside the fresh snow and drifts of recent days are weak layer with graupel. Bonding deteriorates with ascending altitude. The fundament is moist up to high altitudes, the snowpack can glide over the smooth ground. As temperatures drop the danger of wet-snow avalanches recedes. A melt-freeze crust has formed beneath the fresh snow. Superficially triggered avalanches can sweep away the thoroughly wet old snowpack and grow to large size. Not much snow below 1500m.

Weather

Nocturnal hours: cloud cover will move in from the northeast in the evening, rainfall or snowfall is possible during the nighttime hours as temperatures drop. In early morning in the northern regions, dry; in the southern regions light snowfall down to 900m. Monday: low-lying clouds to start with, some minor snowfall in the Bregenzer mountains. Cold NE winds will intensify. In the afternoon, clouds will disperse continually. At 2000 m: -4 degrees. Brisk to strong NE winds.

Outlook

On Tuesday, far-reaching sunny weather. From the north, clouds will move in later in the day. At 2000m: -7 degrees. Moderate to brisk N/NE winds. Avalanche danger will slowly diminish.

Translated by Jeffrey McCabe, www.creativtrans.com

Avalanche problems



Danger ratings



Expositions

