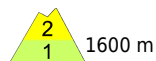
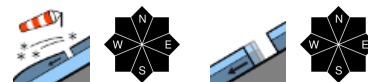


Fresh snow + storm winds + fresh drifts: considerable danger at high altitudes.



1600 m

Voralpenbereich, Bregenzerwaldgebirge



2000 m

Lechquellengebirge, Lechtaler Alpen, Verwall, Rätikon West, Rätikon Ost, Silvretta, Allgäuer Alpen



Avalanche problems



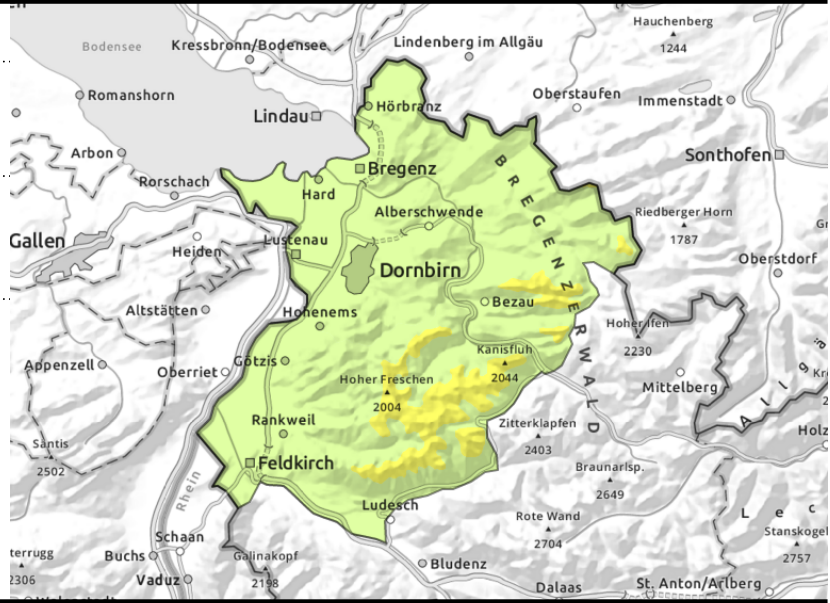
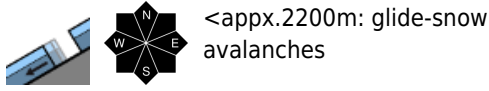
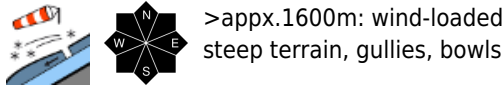
Danger ratings



Expositions



Voralpenbereich, Bregenzerwaldgebirge



Moderate avalanche danger - fresh drifts at high altitudes

Due to strong W/NW winds, snowdrifts have accumulated over the last few days. Danger zones increase in size and frequency with ascending altitude. One sole person can trigger mostly small avalanches in steep ridgeline terrain, in wind-loaded gullies and bowls. Superficially triggered avalanches can sweep away the thoroughly wet old snowpack and grow to large size. The snowpack is wet up to 2200m, naturally triggered small-to-medium glide-snow avalanches are possible at any time of day or night. In steep rocky terrain, loose-snow avalanches are possible in case of more extended bright intervals.

Snowpack structure

Due to mild temperatures and rainfall, the snowpack became thoroughly wet on Thursday. Also on Friday there was intermittent rainfall up to 2000m, later up to 1800m, which led to a further loss of firmness. The bonding at ground level can be lost at any time. As temperatures drop the danger of wet avalanches recedes significantly. Superficially triggered avalanches can sweep away the thoroughly wet old snowpack and grow to large size. The snowpack is wet up to 2200m, naturally triggered small-to-medium glide-snow avalanches are possible at any time of day or night. In steep rocky terrain, loose-snow avalanches are possible in case of more extended bright intervals.

Weather

Nocturnal hours: variably cloudy skies, often a few nighttime showers, drier as morning approaches. Sunday: Above 1500m often reduced visibility. The snowfall level lie lie mosetly at 1200-1400 m. Not much sunshine between the clouds. At 2000 m: -2 degrees. Light to moderate northerly winds.

Outlook

On Monday, low lying clouds until afternoon, poor visibility and a few snowflakes. Brisk to strong and cold NE winds. In the afternoon the clouds will disperse more. Avalanche danger will gradually recede.

Avalanche problems



Danger ratings



Expositions



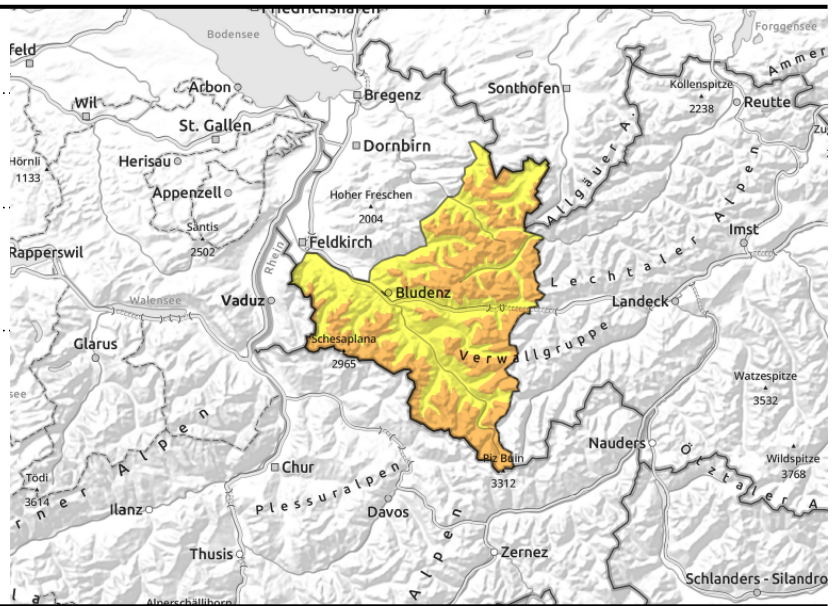
Avalanche report for Sunday, 02.04.2023

Lechquellengebirge, Lechtaler Alpen, Verwall, Rätikon West, Rätikon Ost, Silvretta, Allgäuer Alpen



>appx.1600m: wind-loaded steep terrain, gullies, bowls

<appx.2200m: glide-snow avalanches



Caution: fresh snowdrift accumulations at high altitudes

At high altitudes, freshly generated and older drifts are the main problem. Danger zones increase in size and frequency with ascending altitude. One sole person can trigger mostly small avalanches in steep ridgeline terrain, in wind-loaded gullies and bowls. Superficially triggered avalanches can sweep away the thoroughly wet old snowpack and grow to large size. The snowpack is wet up to 2200m, naturally triggered small-to-medium glide-snow avalanches are possible at any time of day or night. In steep rocky terrain, loose-snow avalanches are possible in case of more extended bright intervals.

Snowpack structure

Due to mild temperatures and rainfall, the snowpack became thoroughly wet on Thursday. Also on Friday there was intermittent rainfall up to 2000m, later up to 1800m, which led to a further loss of firmness. The bonding at ground level can be lost at any time. As temperatures drop the danger of wet avalanches recedes significantly. Superficially triggered avalanches can sweep away the thoroughly wet old snowpack and grow to large size. The snowpack is wet up to 2200m, naturally triggered small-to-medium glide-snow avalanches are possible at any time of day or night. In steep rocky terrain, loose-snow avalanches are possible in case of more extended bright intervals. In steep terrain weak layers lurk, mostly triggerable by large additional loading. At low altitudes the fresh snow often fell on bare ground.

Weather

Nocturnal hours: variably cloudy skies, often a few nighttime showers, drier as morning approaches. Sunday: Above 1500m often reduced visibility. The snowfall level lie lie mosetly at 1200-1400 m. Not much sunshine between the clouds. At 2000 m: -2 degrees. Light to moderate northerly winds.

Outlook

On Monday, low lying clouds until afternoon, poor visibility and a few snowflakes. Brisk to strong and cold NE winds. In the afternoon the clouds will disperse more. Avalanche danger will gradually recede.

Translated by Jeffrey McCabe, www.creativtrans.com

Avalanche problems



Danger ratings



Expositions

