

**Fresh snow + storm winds: fresh drifts at high altitudes.
Below 2200m, wet-snow avalanches.**



Voralpenbereich, Bregenzerwaldgebirge



Lechquellengebirge, Lechtaler Alpen, Verwall, Rätikon West, Rätikon Ost, Silvretta, Allgäuer Alpen



Avalanche problems



Danger ratings



Expositions



Avalanche report for **Saturday, 01.04.2023**

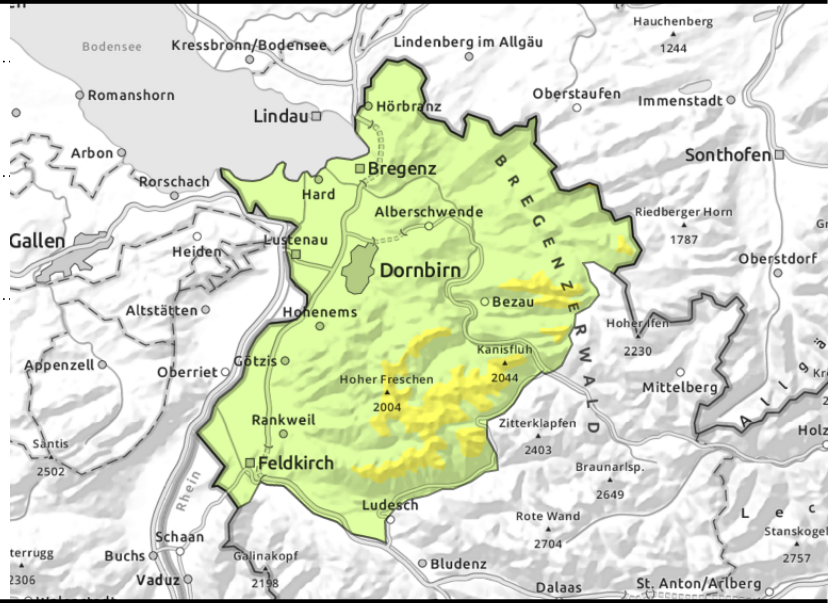
Voralpenbereich, Bregenzerwaldgebirge



>appx.2000m: wind-loaded steep terrain, gullies, bowls



<appx.2000m: wet-snow and glide-snow avalanches



Below 2200m wet-snow avalanches - Above 2000m heed drifts

Above 1500m avalanche danger is moderate. The snowpack below 2200m is thoroughly wet, so small-to-medium wet-snow avalanches can trigger naturally on very steep slopes in all aspects. On steep grassy slopes small-to-medium glide-snow avalanches are possible. At high altitudes, fresh snow and drifts are trigger-sensitive in places. Such danger zones occur in steep ridgeline terrain and in wind-loaded gullies and bowls. One sole person can trigger a small-to-medium sized avalanche.

Snowpack structure

Due to mild temperatures and rainfall, the snowpack was further moistened on Thursday, even some dust from the Sahara Desert was in the air. On Friday, rainfall up to 2000 m, later up to 1800.. Below 1500m there is very little snow on the ground. Strong to stormy S/SW winds transported the fresh snow. Fresh and older snowdrifts increase in size and frequency with ascending altitude. Inside the recent fresh snow and drifts there are weak layers and graupel. Bonding is generally good. At low altitudes the fresh snow was often deposited on bare ground.

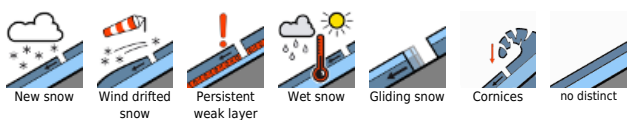
Weather

Nocturnal hours: skies heavily overcast, intermittent showers are possible. The snowfall level will descend from 1600 down to 1200 m. Saturday: instable conditions, intermittent snowfall, rainfall below 1300m. Only rare bright intervals. At 2000 m: -2 degrees. Moderate to strong W/NW winds, slackening off in the afternoon.

Outlook

Sunday will be gloomy and wet. Snowfall level at 1200m, descending later in the day to just under 1000 m. Avalanche danger levels are not expected to change significantly at high altitude. Danger of wet-snow avalanches will recede as temperatures drop.

Avalanche problems



Danger ratings



Expositions



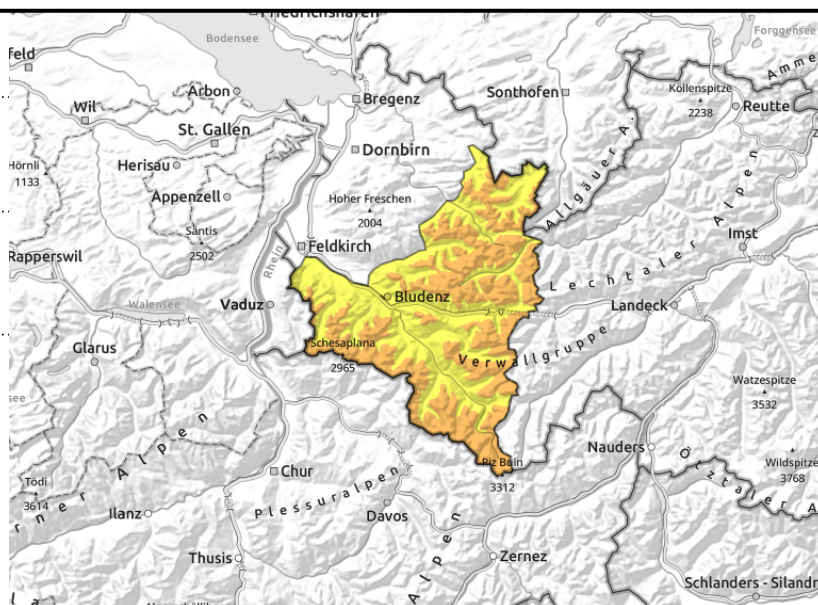
Avalanche report for Saturday, 01.04.2023

Lechquellengebirge, Lechtaler Alpen, Verwall, Rätikon West, Rätikon Ost, Silvretta, Allgäuer Alpen



>appx.2000m: wind-loaded steep terrain, gullies, bowls

<appx.2000m: wet-snow and glide-snow avalanches



Caution: fresh snowdrift accumulations at high altitudes

At high altitudes, fresh snow and drifts are the main problem. Danger zones increase with ascending altitude. One sole person can trigger a small-to-medium sized avalanche in steep ridge terrain and in wind-loaded gullies and bowls. In some places, avalanches can fracture down to more deeply embedded layers inside the snowpack and grow to larger size. Activities in backcountry terrain require experience in assessing avalanche dangers on-site as well as knowledge of the local terrain. Below 2200m the snowpack is thoroughly wet, so on very steep slopes in all aspects small-to-medium sized avalanches can trigger naturally. On steep grassy slopes small-to-medium sized glide-snow avalanches are possible.

Snowpack structure

Due to mild temperatures and rainfall, the snowpack was further moistened on Thursday, even some dust from the Sahara Desert was in the air. On Thursday numerous medium and a few large-sized avalanches were reported. On Friday, rainfall up to 2000 m, later up to 1800. Below 1500m there is very little snow on the ground. Strong to stormy S/SW winds transported the fresh snow. Fresh and older snowdrifts increase in size and frequency with ascending altitude. Inside the recent fresh snow and drifts there are weak layers and graupel. Bonding is generally good. At low altitudes the fresh snow was often deposited on bare ground.

Weather

Nocturnal hours: skies heavily overcast, intermittent showers are possible. The snowfall level will descend from 1600 down to 1200 m. Saturday: instable conditions, intermittent snowfall, rainfall below 1300m. Only rare bright intervals. At 2000 m: -2 degrees. Moderate to strong W/NW winds, slackening off in the afternoon.

Outlook

Sunday will be gloomy and wet. Snowfall level at 1200m, descending later in the day to just under 1000 m. Avalanche danger levels are not expected to change significantly at high altitude. Danger of wet-snow avalanches will recede as temperatures drop.

Translated by Jeffrey McCabe, www.creativtrans.com

Avalanche problems



Danger ratings



Expositions

