

Snowdrifts at high altitudes - considerable danger widespread - wet-snow avalanches below 2200m

	Voralpenbereich, Bregenzeraldgebirge		
	2200 m Lechtallengebirge, Lechtaler Alpen, Verwall, Rätikon West, Rätikon Ost, Silvretta, Allgäuer Alpen		

Avalanche problems



Danger ratings



Expositions



Avalanche report for Friday, 31.03.2023

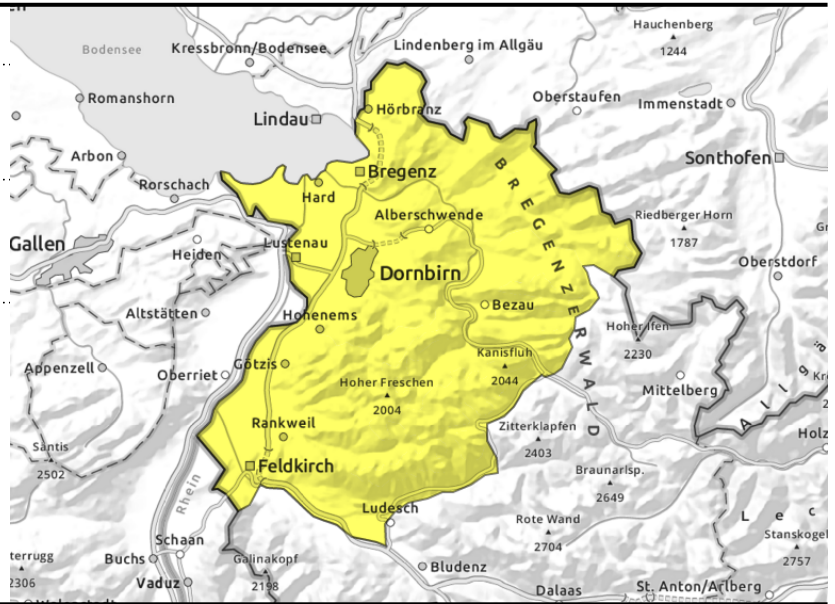
Voralpenbereich, Bregenzerwaldgebirge



wet-snow and glide-snow avalanches



>appx.2000m: wind-loaded steep terrain, gullies, bowls



Reduced nocturnal outgoing radiation - below 2200m wet-snow avalanches - heed small drifts

Moderate avalanche danger prevails. Below 2200m the snowpack is thoroughly wet, so on very steep slopes in all aspects small-to-medium sized avalanches can trigger naturally. On steep grassy slopes small-to-medium sized glide-snow avalanches are possible. At high altitudes fresh snow and drifts are prone to triggering in some places. Such danger zones occur in steep ridgeline terrain and in wind-loaded gullies and bowls. One person can trigger small-to-medium sized avalanches.

Snowpack structure

Due to mild temperatures and rainfall, the snowpack was further moistened on Thursday. Fresh and older snowdrifts increase in size and frequency with ascending altitude. Inside the fresh snow and fresh snowdrifts are weak layers, i.e. graupel. Bonding to the wet and weak old snowpack is generally good. At low altitudes the fresh snow was often deposited on bare ground.

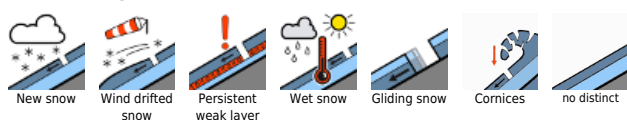
Weather

Nocturnal hours: last snow showers will taper off, scattered clouds will remain. In the latter part of the night, heavily overcast. In early morning rainfall will set in up to 1900-2000m. Friday: Instable conditions, clouds and fog intermittently, frequent showers from the west. Snowfall level will descend from 2000 down to 1600m, on Friday night down to 1100m. Bright intervals are possible. At 2000 m: from +3 to -1 degree. Strong (in high alpine regions storm-strength) W/SW winds.

Outlook

Saturday will bring fresh snowfall in the mountains, instable conditions, rainfall below 1100-1400 m. Winds will be strong from W/NW. Avalanche danger is not expected to change significantly. The risks of wet-snow avalanches will recede as temperatures drop.

Avalanche problems



Danger ratings





Expositions





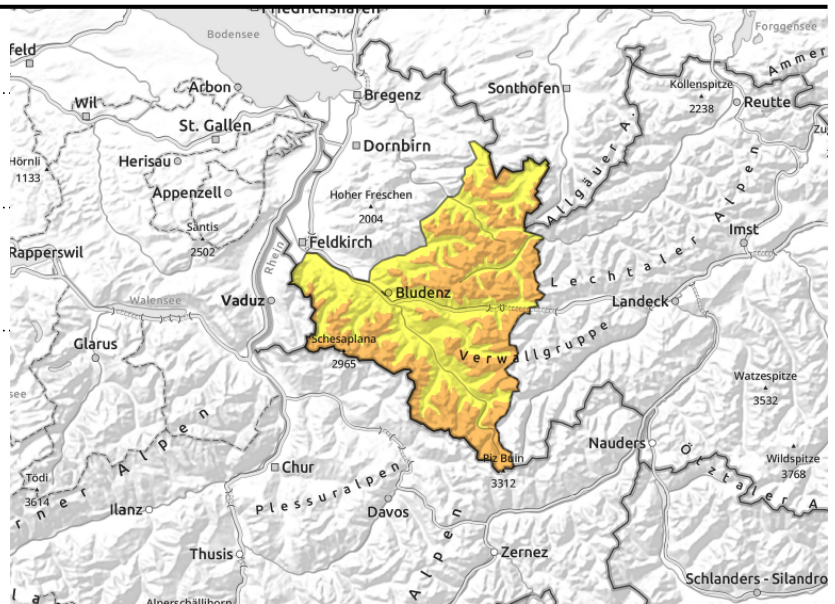
Avalanche report for Friday, 31.03.2023

Lechquellengebirge, Lechtaler Alpen, Verwall, Rätikon West, Rätikon Ost, Silvretta, Allgäuer Alpen



  >appx.2000m: wind-loaded steep terrain, gullies, bowls

  wet-snow and glide-snow avalanches



Often considerable avalanche danger at high altitudes - wet-snow avalanches below 2200m

At high altitudes, fresh snow and drifts are the main problem. Danger zones increase with ascending altitude. One sole person can trigger a small-to-medium sized avalanche in steep ridgeline terrain and in wind-loaded gullies and bowls. In some places, avalanches can fracture down to more deeply embedded layers inside the snowpack and grow to larger size. Activities in backcountry terrain require experience in assessing avalanche dangers on-site as well as knowledge of the local terrain. Below 2200m the snowpack is thoroughly wet, so on very steep slopes in all aspects small-to-medium sized avalanches can trigger naturally. On steep grassy slopes small-to-medium sized glide-snow avalanches are possible.

Snowpack structure

Due to mild temperatures and rainfall, the snowpack was further moistened on Thursday. Fresh and older snowdrifts increase in size and frequency with ascending altitude. Inside the fresh snow and fresh snowdrifts are weak layers, i.e. graupel. Bonding to the wet and weak old snowpack is generally good. At low altitudes the fresh snow was often deposited on bare ground.

Weather

Nocturnal hours: last snow showers will taper off, scattered clouds will remain. In the latter part of the night, heavily overcast. In early morning rainfall will set in up to 1900-2000m. Friday: Instable conditions, clouds and fog intermittently, frequent showers from the west. Snowfall level will descend from 2000 down to 1600m, on Friday night down to 1100m. Bright intervals are possible. At 2000 m: from +3 to -1 degree. Strong (in high alpine regions storm-strength) W/SW winds.

Outlook

Saturday will bring fresh snowfall in the mountains, instable conditions, rainfall below 1100-1400 m. Winds will be strong from W/NW. Avalanche danger is not expected to change significantly. The risks of wet-snow avalanches will recede as temperatures drop.

Translated by Jeffrey McCabe, www.creativtrans.com

Avalanche problems



Danger ratings



Expositions

