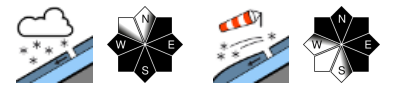


Considerable avalanche danger above the treeline due to fresh snow and drifts



Voralpenbereich, Bregenzeraldgebirge, Allgäuer Alpen



Lechquellengebirge, Lechtaler Alpen, Verwall, Rätikon West, Rätikon Ost, Silvretta



Avalanche problems



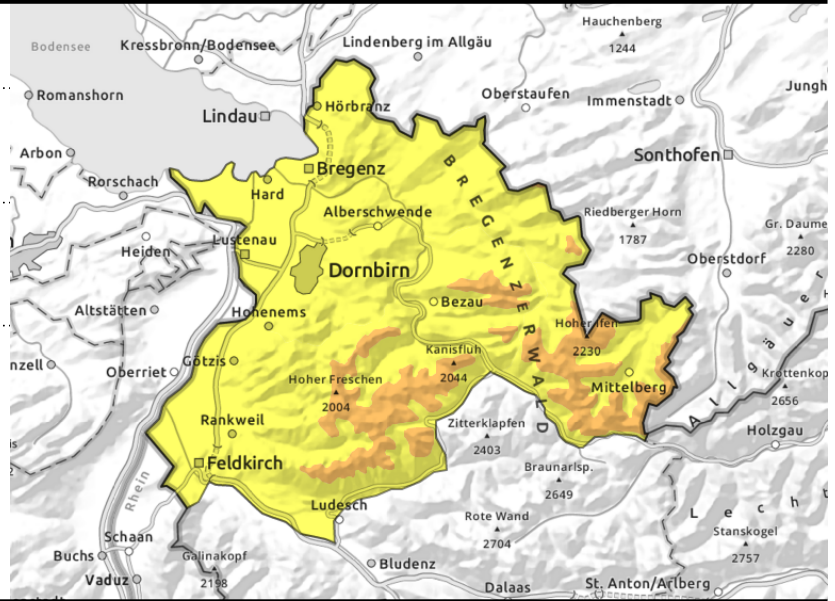
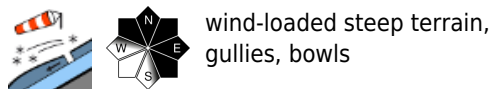
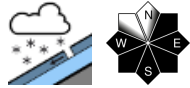
Danger ratings



Expositions



Voralpenbereich, Bregenzerwaldgebirge, Allgäuer Alpen



Heed fresh snowdrift accumulations above treeline

Considerable avalanche danger prevails. Fresh snow and drifts are prone to triggering. Danger zones occur in steep ridgeline terrain and in wind-loaded gullies and bowls. The increase in frequency and size with ascending altitude. One sole person can trigger small-to-medium sized avalanches. Activities in backcountry terrain demand experience in assessing avalanche risks on-site. Due to solar radiation and higher daytime temperatures, naturally triggered avalanches can release in steep rocky terrain, and in wind-loaded zones slab avalanches are possible.

Snowpack structure

Tonight another 10-20 cm of fresh snow is forecast for high altitudes which will be transported by intermittently strong winds, generating further fresh snowdrift accumulations which increase with ascending altitude in both size and frequency. Inside the drifts are weak layers. The fresh snow and drifts lie deposited atop an old snowpack which is thoroughly wet up to high altitudes. Bonding is good, but deteriorates with ascending altitude. At low altitudes the fresh snow often fell on bare ground.

Weather

Nocturnal hours: snow showers down to low lying areas, tapering off later in the night. Tuesday: final snow showers will taper off and sunshine is expected. In the afternoon, high clouds will move in from the west. At 2000 m: -11 to -4 degrees. Brisk northerly winds, later shifting to westerly.

Outlook

Temperatures will rise on Wednesday. Diffuse light, light intermittent snowfall above 1500 m. Strong westerly winds. Avalanche danger is not expected to change significantly.

Avalanche problems



Danger ratings



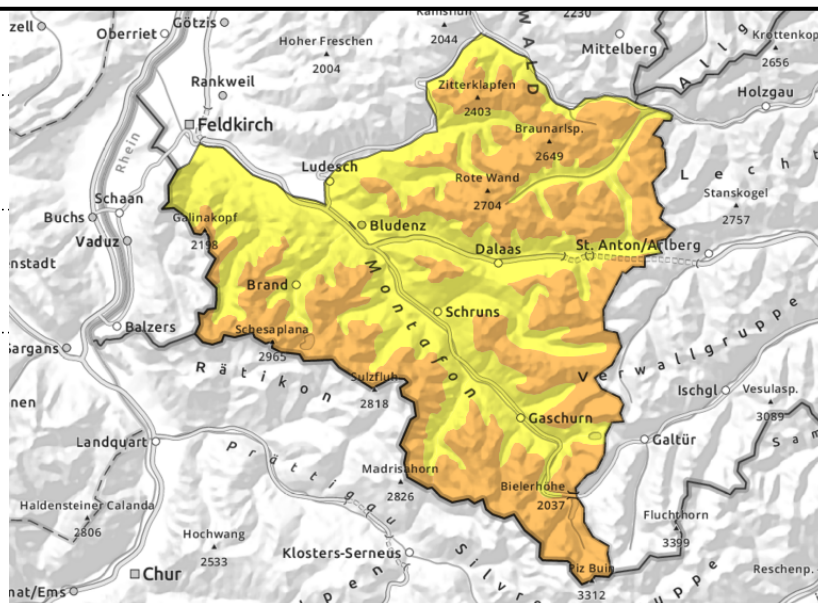
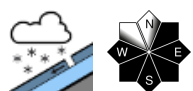
Expositions



Lechquellengebirge, Lechtaler Alpen, Verwall, Rätikon West, Rätikon Ost, Silvretta



> 1800m ridgeline terrain, wind-loaded gullies and bowls



Considerable avalanche danger due to fresh snow and drifts

Fresh snow and freshly generated snowdrifts are the main problem. Danger zones occur in steep ridgeline terrain, in wind-loaded gullies and bowls. They increase in size and frequency during the course of the day and with ascending altitude. One persons can trigger a medium - sized avalanche. Activities in backcountry terrain demand experience in assessing avalanche risks on-site. In very steep rocky terrain, naturally triggered loose-snow avalanches, and in wind-loaded zones slab avalanches, are possible.

Snowpack structure

Tonight another 10-20 cm of fresh snow is forecast for high altitudes which will be transported by intermittently strong winds, generating further fresh snowdrift accumulations which increase with ascending altitude in both size and frequency. Inside the drifts are weak layers. The fresh snow and drifts lie deposited atop an old snowpack which is thoroughly wet up to high altitudes. Bonding is good, but deteriorates with ascending altitude. At low altitudes the fresh snow often fell on bare ground.

Weather

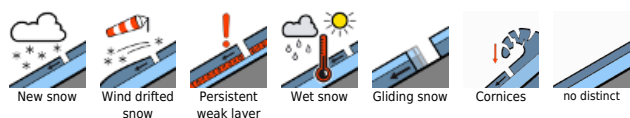
Nocturnal hours: snow showers down to low lying areas, tapering off later in the night. Tuesday: final snow showers will taper off and sunshine is expected. In the afternoon, high clouds will move in from the west. At 2000 m: -11 to -4 degrees. Brisk northerly winds, later shifting to westerly.

Outlook

Temperatures will rise on Wednesday. Diffuse light, light intermittent snowfall above 1500 m. Strong westerly winds. Avalanche danger is not expected to change significantly.

Translated by Jeffrey McCabe, www.creativtrans.com

Avalanche problems



Danger ratings



Expositions

