

Ongoing danger of wet-snow avalanches - Fresh snowdrifts at high altitudes

	Voralpenbereich, Bregenzerwaldgebirge, Allgäuer Alpen	
	2600 m Lechquellengebirge, Lechtaler Alpen, Verwall, Rätikon West, Rätikon Ost, Silvretta	

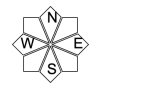
Avalanche problems



Danger ratings



Expositions



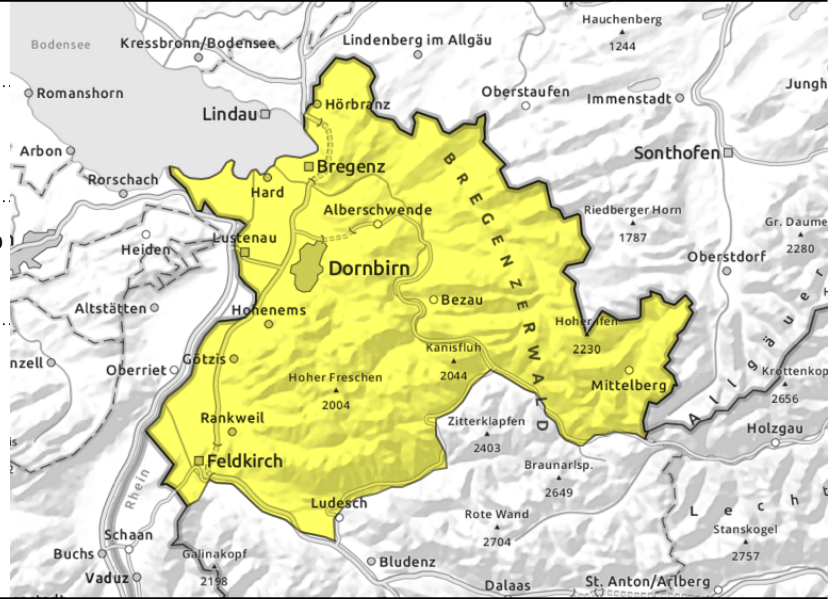
Voralpenbereich, Bregenzerwaldgebirge, Allgäuer Alpen



snowpack thoroughly wet up to high altitudes



small-areas in high ridgeline and pass zones



Ongoing wet-snow and glide-snow avalanches

Main danger still: wet snow. On very steep slopes in all aspects, small-to-medium sized avalanches can trigger naturally. On steep slopes which have smooth ground, small-to-medium glide-snow avalanches are possible, glide cracks are indicators of danger. In extremely steep terrain, isolated small-to-medium sized avalanches can be triggered by skies. Apart from the risks of being buried in snow masses, the dangers of taking a fall also require attentiveness. At high altitudes, fresh snow and winds are generating new small drifts which must be evaluated with caution.

Snowpack structure

The snowpack is thoroughly wet up to high altitudes. Outgoing nocturnal radiation and further rainfall is preventing the snowpack from freezing. In steep terrain wet-snow and glide-snow avalanches can trigger naturally. Not much snow or fresh snowdrifts at high altitudes, but in shady terrain still unfavorable layers deeply embedded inside the snowpack, though they are unlikely to trigger. Below 1500m on shady slopes there is not much snow on the ground.

Weather

Nocturnal hours: cloudy skies this evening and during the night, with further showers. The snowfall level will descend to nearly 1200m. Saturday: snow and sleet showers will move through, mostly in the northern massifs. The snowfall level will lie at 1300 m. Sunshine only intermittently. Colder than recently. At 2000 m: -3 degrees. Strong westerly winds, even strong at summit altitudes.

Outlook

On Sunday, gloomy skies, precipitation from the west, snowfall down to 1300m. Depending on winds and amounts of fresh snow, avalanche danger at high altitudes could increase from place to place. Danger of wet-snow and glide-snow avalanches will gradually recede as temperatures drop.

Avalanche problems



Danger ratings



Expositions



Lechquellengebirge, Lechtaler Alpen, Verwall, Rätikon West, Rätikon Ost, Silvretta



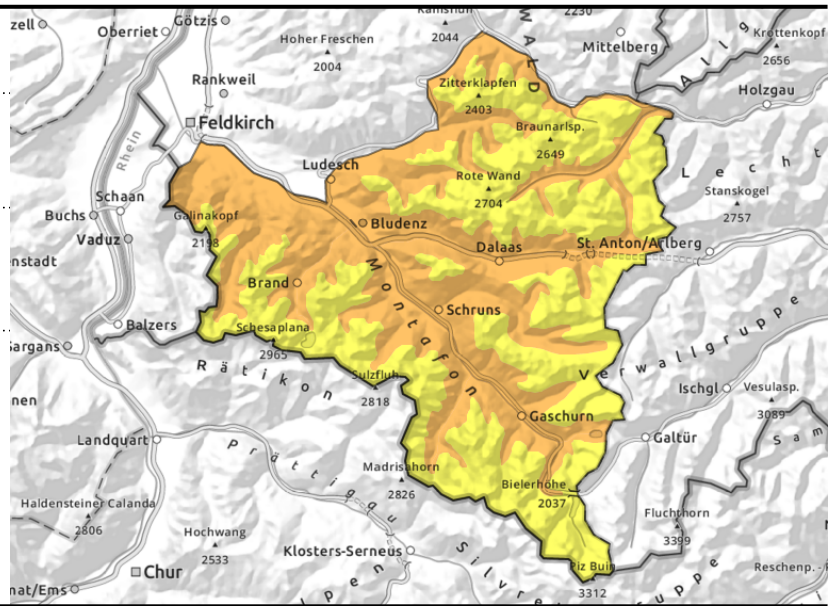
2600 m



<appx. 2600m wet-snow and glide-snow avalanches



<appx. 2200m weak intermediate layers



Continuing danger of wet-snow avalanches - Fresh drifts at high altitudes

Avalanche danger stems from wet snow. On very steep slopes in all aspects, small-to-medium wet-snow avalanches can trigger naturally. On steep slopes with smooth ground, in addition, small-to-medium glide-snow avalanches are possible. Glide cracks should be seen as indicators of imminent danger. In extremely steep terrain, isolated small-to-medium avalanches can be triggered by winter sports enthusiasts. Apart from the risks of being buried in snow masses, the danger of being forced to take a fall also needs to be taken into consideration. As snowfall sets in and winds increase, snowdrift accumulations will be generated.

Snowpack structure

The snowpack is thoroughly wet up to high altitudes. Outgoing nocturnal radiation and further rainfall is preventing the snowpack from freezing. In steep terrain wet-snow and glide-snow avalanches can trigger naturally. Not much snow or fresh snowdrifts at high altitudes, but in shady terrain still unfavorable layers deeply embedded inside the snowpack, though they are unlikely to trigger. Below 1500m on shady slopes there is not much snow on the ground.

Weather

Nocturnal hours: cloudy skies this evening and during the night, with further showers. The snowfall level will descend to nearly 1200m. Saturday: snow and sleet showers will move through, mostly in the northern massifs. The snowfall level will lie at 1300 m. Sunshine only intermittently. Colder than recently. At 2000 m: -3 degrees. Strong westerly winds, even strong at summit altitudes.

Outlook

On Sunday, gloomy skies, precipitation from the west, snowfall down to 1300m. Depending on winds and amounts of fresh snow, avalanche danger at high altitudes could increase from place to place. Danger of wet-snow and glide-snow avalanches will gradually recede as temperatures drop.

Translated by Jeffrey McCabe, www.creativtrans.com

Avalanche problems



Danger ratings



Expositions

