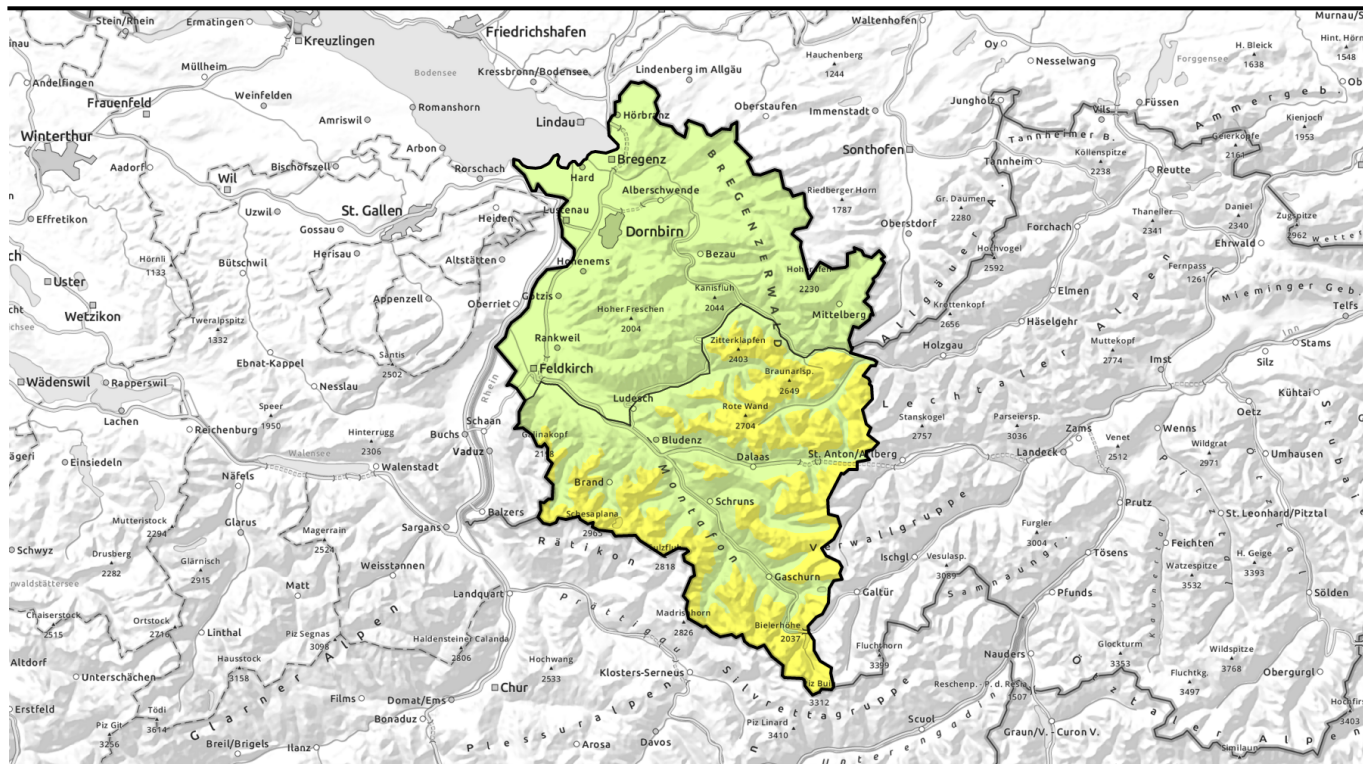


Avalanche report for Wednesday, 22.03.2023, morning



Mostly moderate avalanche danger at high altitudes - heed daytime danger cycle



Voralpenbereich, Bregenzerwaldgebirge, Allgäuer Alpen



1800 m

Lechquellengebirge, Lechtaler Alpen, Verwall, Rätikon West, Rätikon Ost, Silvretta



Avalanche problems



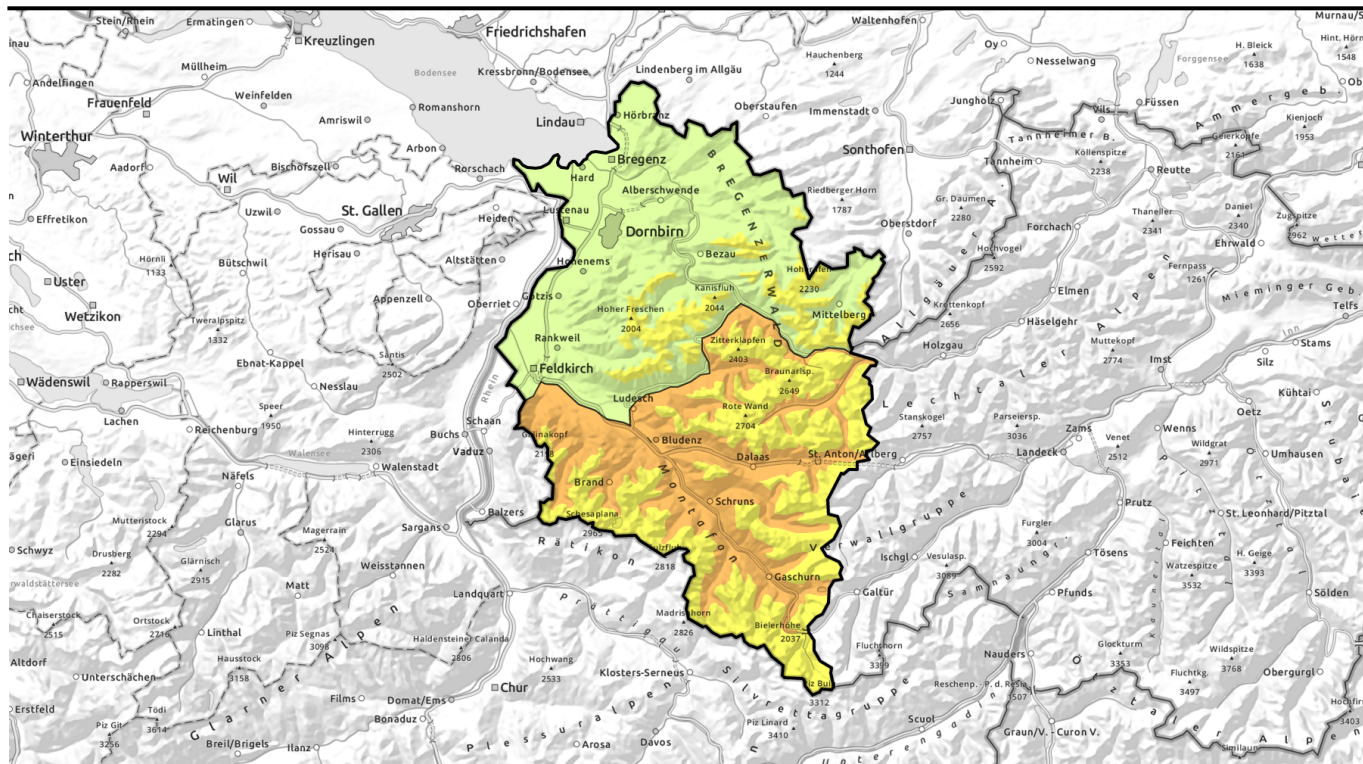
Danger ratings



Expositions



Avalanche report for Wednesday, 22.03.2023, afternoon

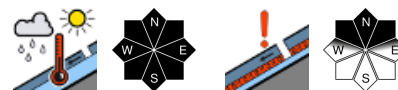


in höheren Lagen meist mäßige Lawinengefahr - tageszeitlichen Anstieg beachten



Voralpenbereich, Bregenzerwaldgebirge, Allgäuer Alpen

1400 m



Lechquellengebirge, Lechtaler Alpen, Verwall, Rätikon West, Rätikon Ost, Silvretta

2500 m



Avalanche problems



Danger ratings



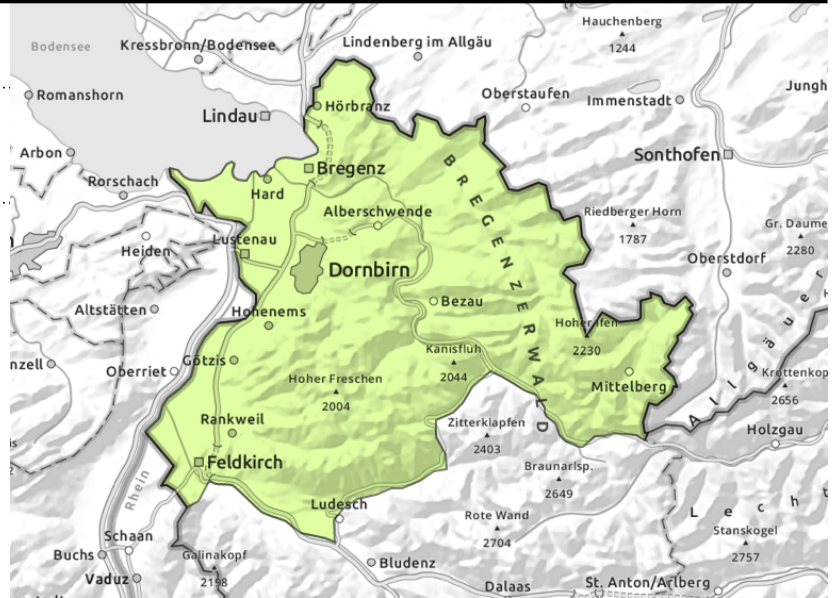
Expositions



Voralpenbereich, Bregenzerwaldgebirge, Allgäuer Alpen



extremely steep terrain on north-facing slopes



Wet-snow, glide-snow avalanches

Avalanche danger is low in the morning, rises during the daytime hours. In extremely steep terrain, isolated small avalanches are triggerable by winter sports enthusiasts. In the afternoon, main danger stems from wet snow. On very steep slopes, mostly small wet-snow avalanches can trigger naturally. On steep smooth slopes, in addition, small-to-medium glide snow avalanches are possible. Glide cracks are indicators of imminent danger.

Snowpack structure

The snowpack is thoroughly wet up well into intermediate altitude terrain, and wet down to the ground. Variably cloudy skies on Monday night will generated a melt-freeze crust, sometimes capable of bearing loads, which softens up during the daytime on Tuesday, making the snowpack lose its firmness, and wet-snow / glide-snow avalanches possible in steep terrain. At high altitudes, older snowdrift accumulations have soft layers embedded, which are unlikely to trigger. Below 1500m on shady slopes there is not much snow on the ground.

Weather

Nocturnal hours: in the early part of the night, widespread dense clouds from the west. In early morning these will disperse, temperatures will drop, but not significantly. Wednesday: high altitude clouds will reduce visibility and cause diffuse radiation, but conditions will remain generally pleasant in the mountains. At 2000 m: +6 degrees. Brisk to strong W/SW winds.

Outlook

On Thursday, mild and windy, with high altitude clouds. Friday: a cold front is forecast. Until then, daytime rise in danger of wet-snow and glide-snow avalanches requires caution.

Avalanche problems



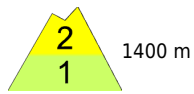
Danger ratings



Expositions

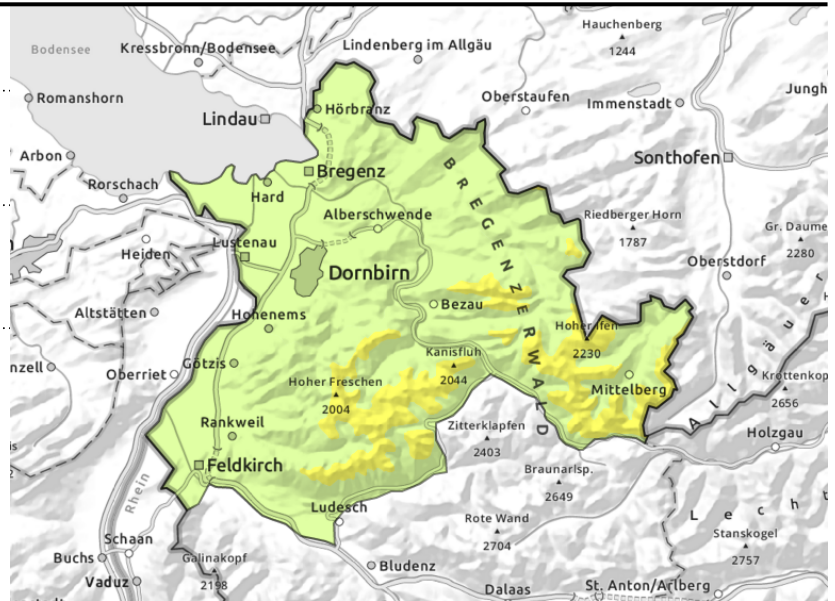


Voralpenbereich, Bregenzerwaldgebirge, Allgäuer Alpen



Wet-snow, glide-snow avalanches

extremely steep terrain



Wet-snow, glide-snow avalanches

Avalanche danger is low in the morning, rises during the daytime hours. In extremely steep terrain, isolated small avalanches are triggerable by winter sports enthusiasts. In the afternoon, main danger stems from wet snow. On very steep slopes, mostly small wet-snow avalanches can trigger naturally. On steep smooth slopes, in addition, small-to-medium glide snow avalanches are possible. Glide cracks are indicators of imminent danger.

Snowpack structure

The snowpack is thoroughly wet up well into intermediate altitude terrain, and wet down to the ground. Variably cloudy skies on Monday night will generated a melt-freeze crust, sometimes capable of bearing loads, which softens up during the daytime on Tuesday, making the snowpack lose its firmness, and wet-snow / glide-snow avalanches possible in steep terrain. At high altitudes, older snowdrift accumulations have soft layers embedded, which are unlikely to trigger. Below 1500m on shady slopes there is not much snow on the ground.

Weather

Nocturnal hours: in the early part of the night, widespread dense clouds from the west. In early morning these will disperse, temperatures will drop, but not significantly. Wednesday: high altitude clouds will reduce visibility and cause diffuse radiation, but conditions will remain generally pleasant in the mountains. At 2000 m: +6 degrees. Brisk to strong W/SW winds.

Outlook

On Thursday, mild and windy, with high altitude clouds. Friday: a cold front is forecast. Until then, daytime rise in danger of wet-snow and glide-snow avalanches requires caution.

Avalanche problems



Danger ratings

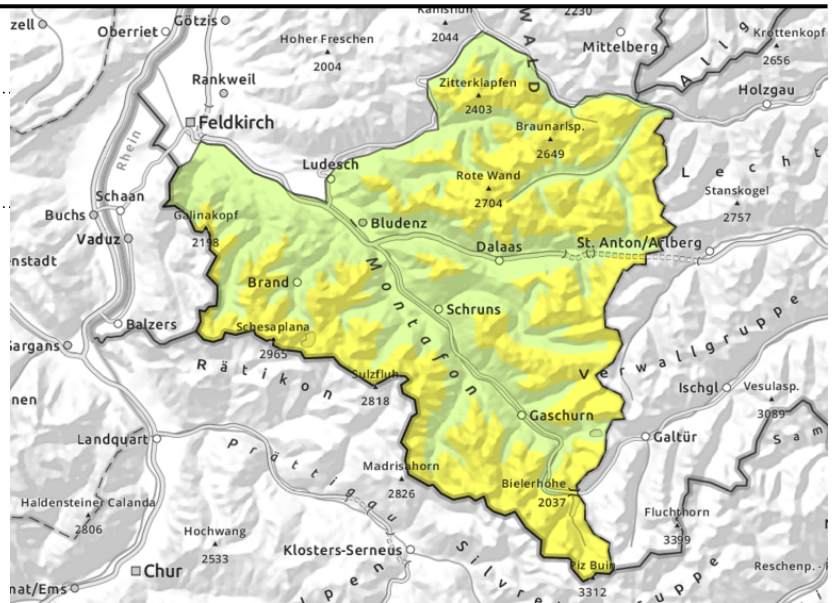


Expositions



Avalanche report for Wednesday, 22.03.2023, morning

Lechquellengebirge, Lechtaler Alpen, Verwall, Rätikon West, Rätikon Ost, Silvretta



Swift daytime increase in danger of wet-snow and glide-snow avalanches

Main danger: weak layers inside the old snowpack. Danger zones occur mostly in wind-loaded high-altitude shady steep terrain, behind abrupt discontinuities in the terrain and in gullies and bowls. Naturally triggered avalanches are possible on very steep slopes. As a result of daytime warming and solar radiation, most slides and small loose-snow avalanches are possible on very steep sunny slopes. On steep grass-covered slopes glide-snow avalanches are possible. Backcountry activities should be terminated early in the day.

Snowpack structure

The snowpack is thoroughly wet up well into intermediate altitude terrain, and wet down to the ground. Variably cloudy skies on Monday night will generated a melt-freeze crust, sometimes capable of bearing loads, which softens up during the daytime on Tuesday, making the snowpack lose its firmness, and wet-snow / glide-snow avalanches possible in steep terrain. At high altitudes, older snowdrift accumulations have soft layers embedded, which are unlikely to trigger. Below 1500m on shady slopes there is not much snow on the ground.

Weather

Nocturnal hours: in the early part of the night, widespread dense clouds from the west. In early morning these will disperse, temperatures will drop, but not significantly. Wednesday: high altitude clouds will reduce visibility and cause diffuse radiation, but conditions will remain generally pleasant in the mountains. At 2000 m: +6 degrees. Brisk to strong W/SW winds.

Outlook

On Thursday, mild and windy, with high altitude clouds. Friday: a cold front is forecast. Until then, daytime rise in danger of wet-snow and glide-snow avalanches requires caution.

Avalanche problems



Danger ratings



Expositions



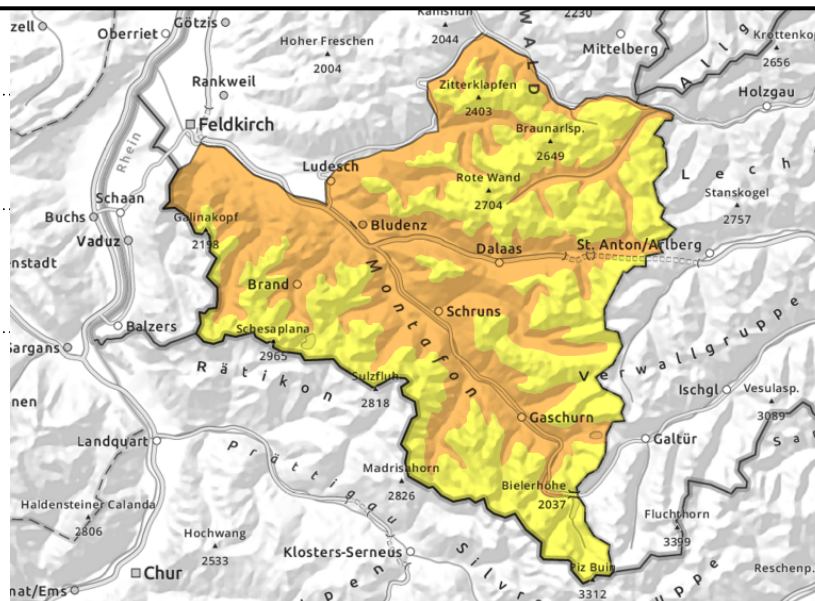
Avalanche report for Wednesday, 22.03.2023, afternoon

Lechquellengebirge, Lechtaler Alpen, Verwall, Rätikon West, Rätikon Ost, Silvretta



wet-snow and glide-snow avalanches

weak layers



Swift daytime increase in danger of wet-snow and glide-snow avalanches

Main danger: weak layers inside the old snowpack. Danger zones occur mostly in wind-loaded high-altitude shady steep terrain, behind abrupt discontinuities in the terrain and in gullies and bowls. Naturally triggered avalanches are possible on very steep slopes. As a result of daytime warming and solar radiation, most slides and small loose-snow avalanches are possible on very steep sunny slopes. On steep grass-covered slopes glide-snow avalanches are possible. Backcountry activities should be terminated early in the day.

Snowpack structure

The snowpack is thoroughly wet up well into intermediate altitude terrain, and wet down to the ground. Variably cloudy skies on Monday night will generated a melt-freeze crust, sometimes capable of bearing loads, which softens up during the daytime on Tuesday, making the snowpack lose its firmness, and wet-snow / glide-snow avalanches possible in steep terrain. At high altitudes, older snowdrift accumulations have soft layers embedded, which are unlikely to trigger. Below 1500m on shady slopes there is not much snow on the ground.

Weather

Nocturnal hours: in the early part of the night, widespread dense clouds from the west. In early morning these will disperse, temperatures will drop, but not significantly. Wednesday: high altitude clouds will reduce visibility and cause diffuse radiation, but conditions will remain generally pleasant in the mountains. At 2000 m: +6 degrees. Brisk to strong W/SW winds.

Outlook

On Thursday, mild and windy, with high altitude clouds. Friday: a cold front is forecast. Until then, daytime rise in danger of wet-snow and glide-snow avalanches requires caution.

Translated by Jeffrey McCabe, www.creativtrans.com

Avalanche problems



Danger ratings



Expositions

