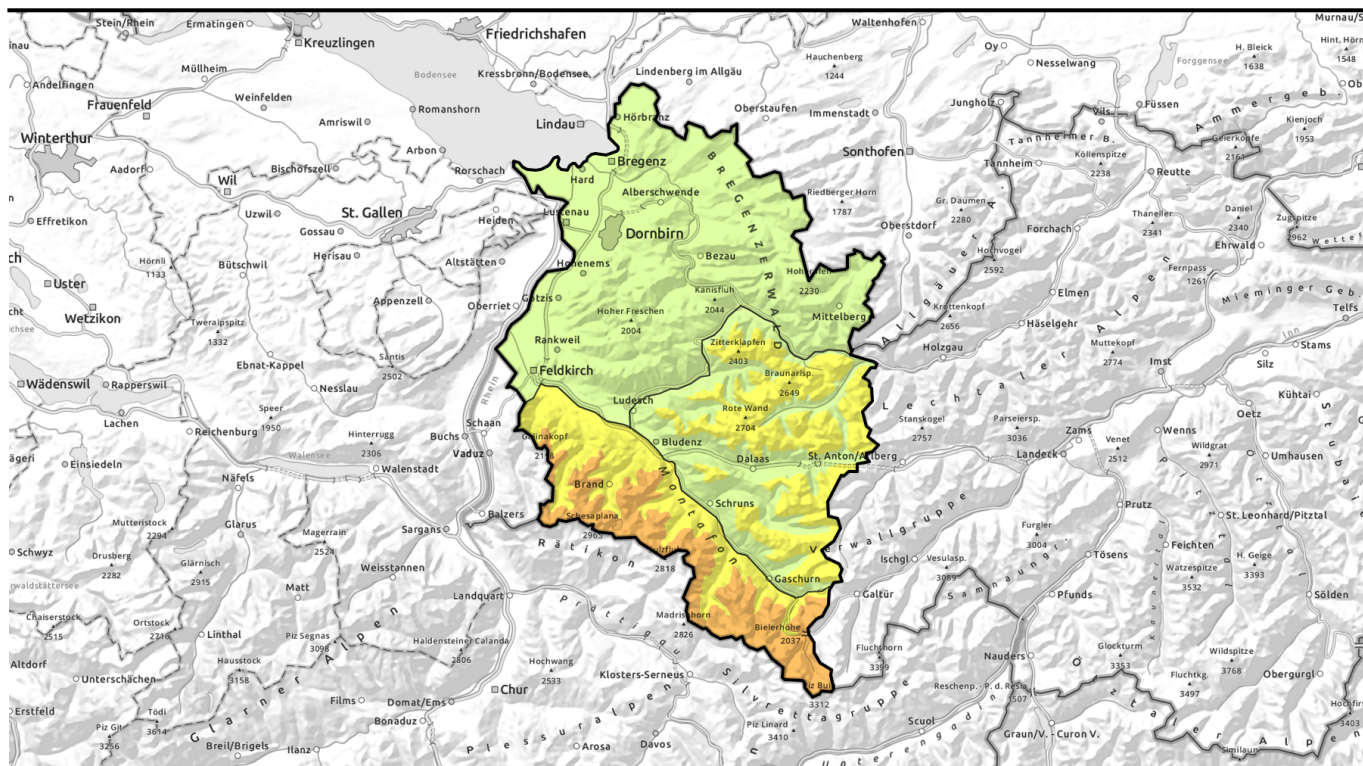


Avalanche report 20.03.2023 through 21.03.2023, morning



Regionally, still considerable avalanche danger - Rising danger during course of day



Voralpenbereich, Bregenzerwaldgebirge, Allgäuer Alpen



2000 m

Lechquellengebirge, Lechtaler Alpen, Verwall



2200 m

Rätikon West, Rätikon Ost, Silvretta



Avalanche problems



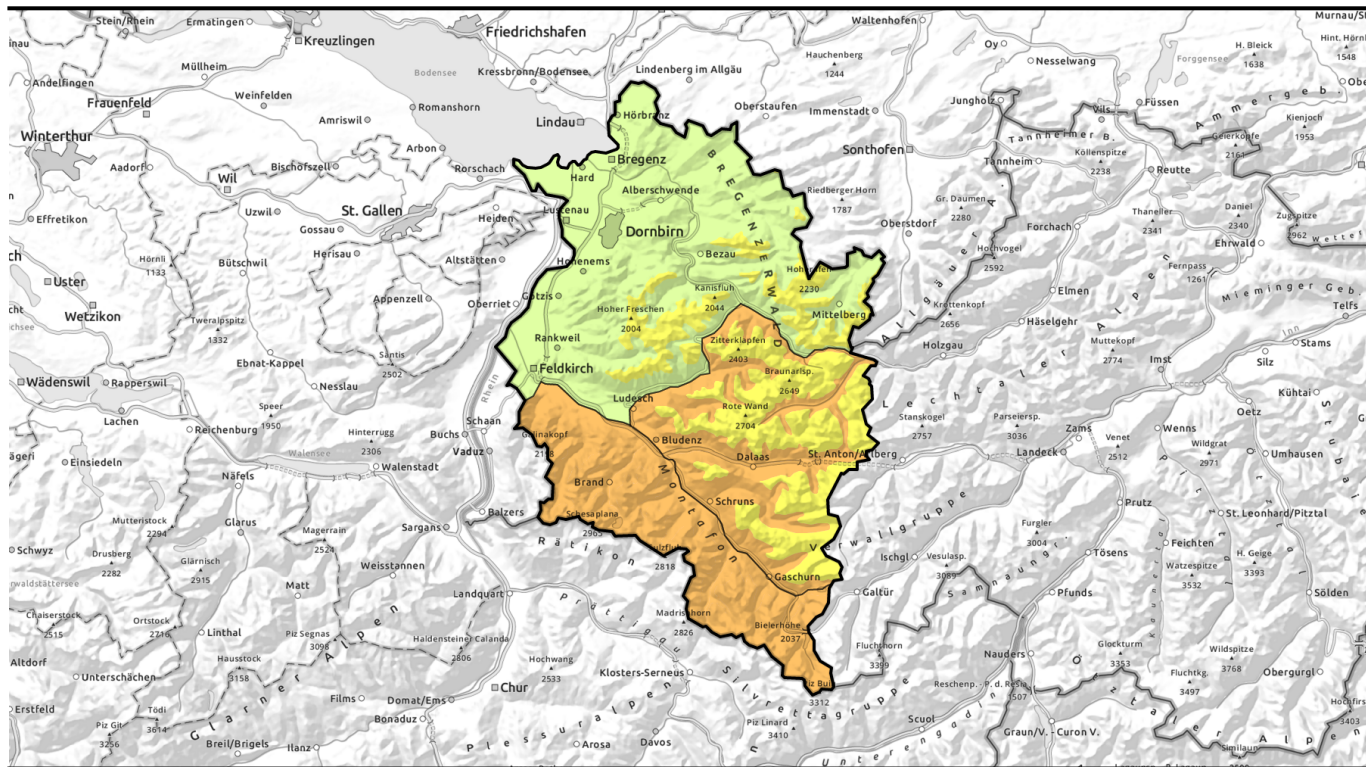
Danger ratings



Expositions



Avalanche report 20.03.2023 through 21.03.2023, afternoon

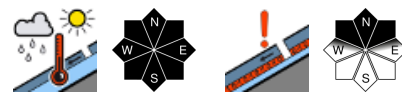


gebietsweise noch erhebliche Lawinengefahr - Anstieg der Gefahr im Tagesverlauf



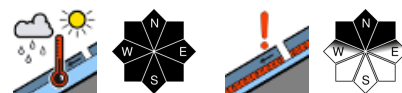
Voralpenbereich, Bregenzerwaldgebirge, Allgäuer Alpen

1400 m

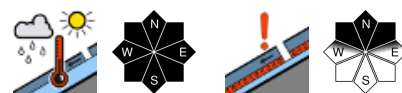


Lechquellengebirge, Lechtaler Alpen, Verwall

2000 m



Rätikon West, Rätikon Ost, Silvretta



Avalanche problems



Danger ratings



Expositions

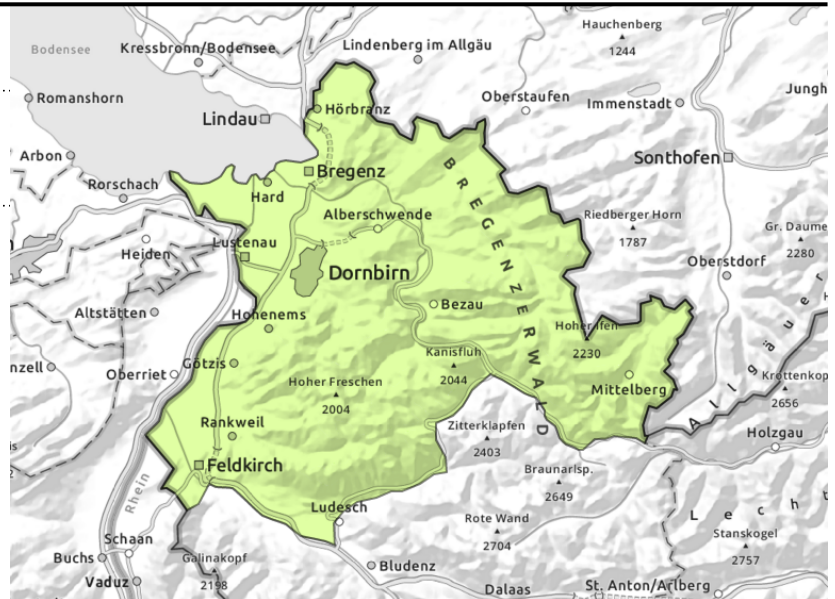


Avalanche report 20.03.2023 through 21.03.2023, morning

Voralpenbereich, Bregenzerwaldgebirge, Allgäuer Alpen



extremely steep terrain on north-facing slopes



Wet-snow, glide-snow avalanches during course of day

Avalanche danger is low in the morning, rises during the daytime hours. In extremely steep terrain, isolated small avalanches are triggerable by winter sports enthusiasts. In the afternoon, main danger stems from wet snow. On very steep slopes, mostly small wet-snow avalanches can trigger naturally. On steep smooth slopes, in addition, small-to-medium glide snow avalanches are possible. Glide cracks are indicators of imminent danger.

Snowpack structure

The snowpack is thoroughly wet up well into intermediate altitude terrain, and wet down to the ground. Variably cloudy skies on Monday night will generate a melt-freeze crust, sometimes capable of bearing loads, which softens up during the daytime on Tuesday, making the snowpack lose its firmness, and wet-snow / glide-snow avalanches possible in steep terrain. At high altitudes, older snowdrift accumulations have soft layers embedded, which are unlikely to trigger. Below 1500m on shady slopes there is not much snow on the ground.

Weather

Scattered clouds during the night will not prevent outgoing radiation. Tuesday will be sunny with good visibility. Winds light to moderate, the zero-degree level at 2600m. Clouds will appear in the evening from the west. At 2000 m: +5 degrees. Light to moderate westerly winds.

Outlook

Daytime rise of danger.

Avalanche problems



Danger ratings

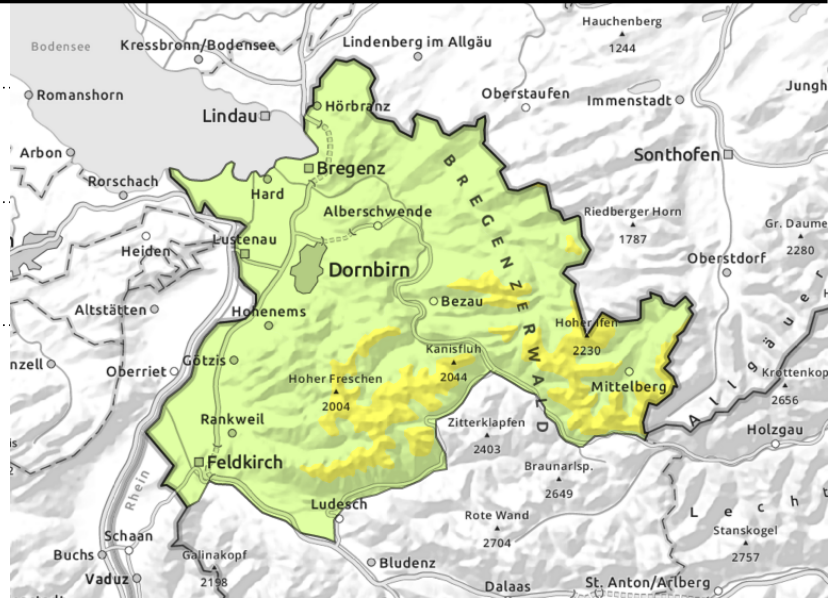
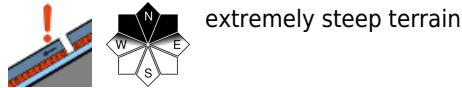
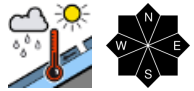


Expositions



Avalanche report 20.03.2023 through 21.03.2023, afternoon

Voralpenbereich, Bregenzerwaldgebirge, Allgäuer Alpen



Wet-snow, glide-snow avalanches during course of day

Avalanche danger is low in the morning, rises during the daytime hours. In extremely steep terrain, isolated small avalanches are triggerable by winter sports enthusiasts. In the afternoon, main danger stems from wet snow. On very steep slopes, mostly small wet-snow avalanches can trigger naturally. On steep smooth slopes, in addition, small-to-medium glide snow avalanches are possible. Glide cracks are indicators of imminent danger.

Snowpack structure

The snowpack is thoroughly wet up well into intermediate altitude terrain, and wet down to the ground. Variably cloudy skies on Monday night will generate a melt-freeze crust, sometimes capable of bearing loads, which softens up during the daytime on Tuesday, making the snowpack lose its firmness, and wet-snow / glide-snow avalanches possible in steep terrain. At high altitudes, older snowdrift accumulations have soft layers embedded, which are unlikely to trigger. Below 1500m on shady slopes there is not much snow on the ground.

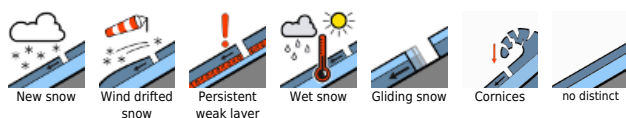
Weather

Scattered clouds during the night will not prevent outgoing radiation. Tuesday will be sunny with good visibility. Winds light to moderate, the zero-degree level at 2600m. Clouds will appear in the evening from the west. At 2000 m: +5 degrees. Light to moderate westerly winds.

Outlook

Daytime rise of danger.

Avalanche problems



Danger ratings

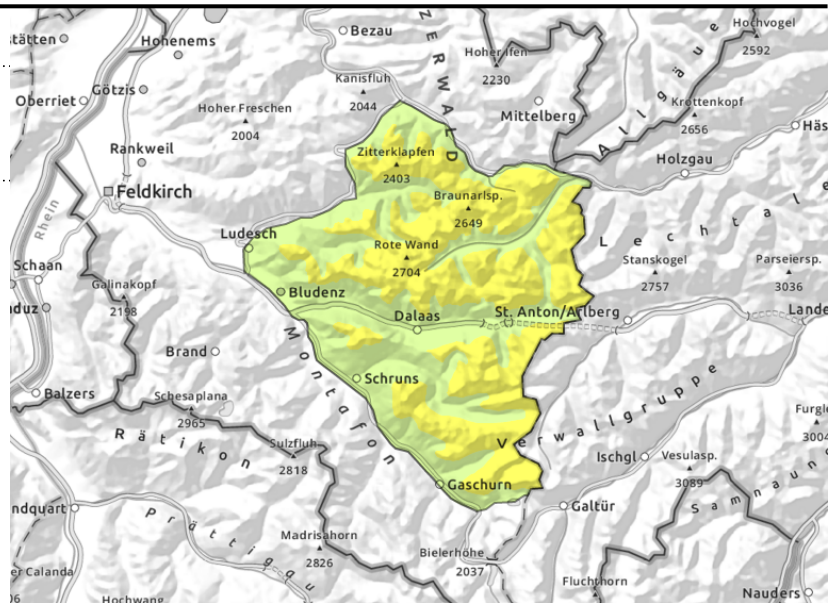


Expositions



Avalanche report 20.03.2023 through 21.03.2023, morning

Lechquellengebirge, Lechtaler Alpen, Verwall



Caution: trigger-sensitive weak layers on steep shady slopes and danger of wet-snow and glide-snow avalanches

Main danger: weak layers inside the old snowpack. Danger zones occur mostly in wind-loaded high-altitude shady steep terrain, behind abrupt discontinuities in the terrain and in gullies and bowls. Naturally triggered avalanches are possible on very steep slopes. As a result of daytime warming and solar radiation, wet loose-snow avalanches are possible on very steep sunny slopes. On steep grass-covered slopes glide-snow avalanches are possible.

Snowpack structure

Good nocturnal outgoing radiation, the snowpack can re-freeze, then soften during the daytime hours. On sunny slopes the snowpack is thoroughly wet up to intermediate altitudes. On high altitude shady slopes there are trigger-sensitive layers embedded which are still prone to triggering. At low altitudes there is little snow on the ground.

Weather

Scattered clouds during the night will not prevent outgoing radiation. Tuesday will be sunny with good visibility. Winds light to moderate, the zero-degree level at 2600m. Clouds will appear in the evening from the west. At 2000 m: +5 degrees. Light to moderate westerly winds.

Outlook

Daytime rise of danger.

Avalanche problems



Danger ratings

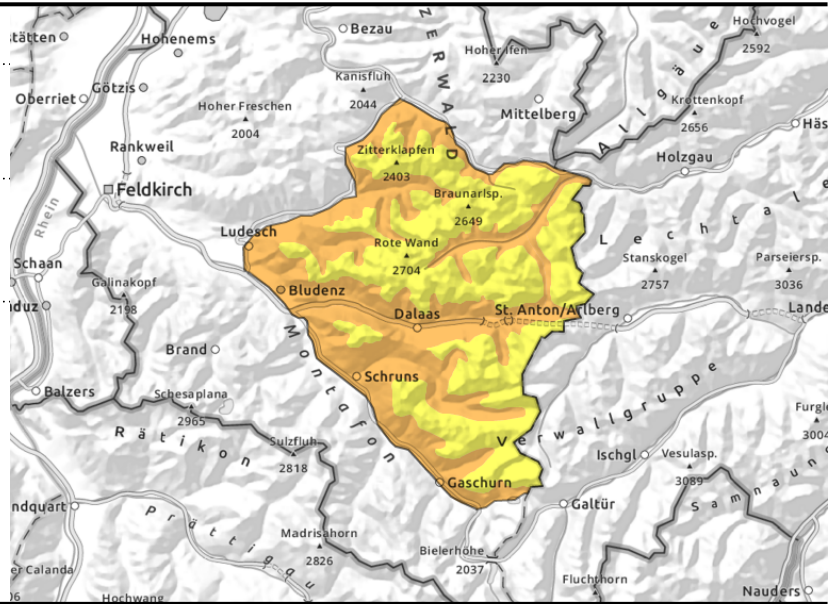
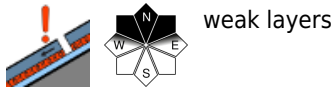
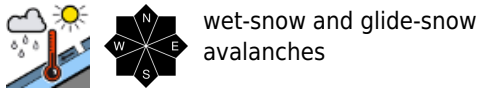


Expositions



Avalanche report 20.03.2023 through 21.03.2023, afternoon

Lechquellengebirge, Lechtaler Alpen, Verwall



Caution: trigger-sensitive weak layers on steep shady slopes and danger of wet-snow and glide-snow avalanches

Main danger: weak layers inside the old snowpack. Danger zones occur mostly in wind-loaded high-altitude shady steep terrain, behind abrupt discontinuities in the terrain and in gullies and bowls. Naturally triggered avalanches are possible on very steep slopes. As a result of daytime warming and solar radiation, wet loose-snow avalanches are possible on very steep sunny slopes. On steep grass-covered slopes glide-snow avalanches are possible.

Snowpack structure

Good nocturnal outgoing radiation, the snowpack can re-freeze, then soften during the daytime hours. On sunny slopes the snowpack is thoroughly wet up to intermediate altitudes. On high altitude shady slopes there are trigger-sensitive layers embedded which are still prone to triggering. At low altitudes there is little snow on the ground.

Weather

Scattered clouds during the night will not prevent outgoing radiation. Tuesday will be sunny with good visibility. Winds light to moderate, the zero-degree level at 2600m. Clouds will appear in the evening from the west. At 2000 m: +5 degrees. Light to moderate westerly winds.

Outlook

Daytime rise of danger.

Avalanche problems



Danger ratings

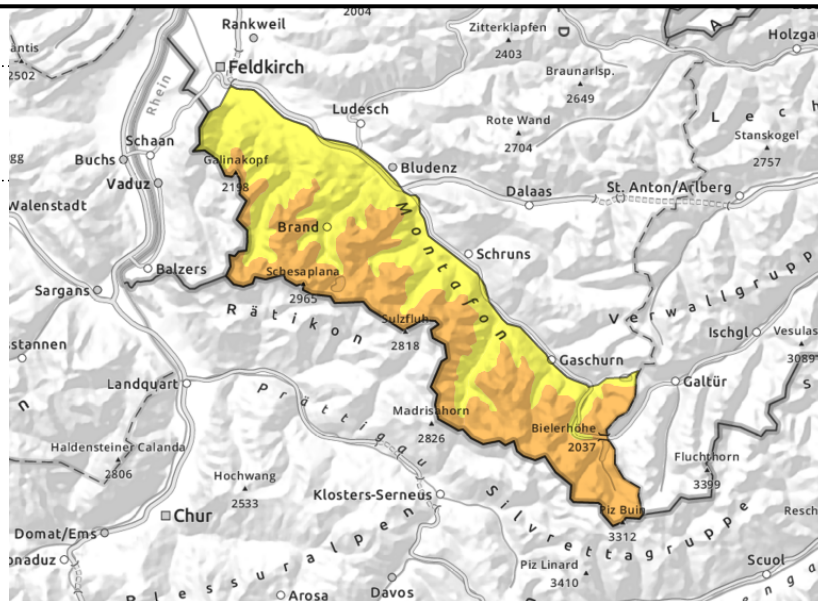
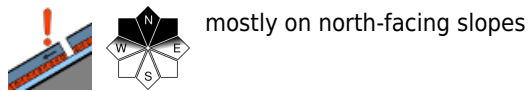


Expositions



Avalanche report 20.03.2023 through 21.03.2023, morning

Rätikon West, Rätikon Ost, Silvretta



Caution: trigger-sensitive weak layers on steep shady slopes and danger of wet-snow and glide-snow avalanches

Main danger: weak layers inside the old snowpack. Danger zones occur mostly in wind-loaded high-altitude shady steep terrain, behind abrupt discontinuities in the terrain and in gullies and bowls. Due to intensive solar radiation and daytime warming the snowpack forfeits its firmness and the likelihood of triggering increases. As a result of daytime warming and solar radiation, wet loose-snow avalanches are possible on very steep sunny slopes. On steep grass-covered slopes glide-snow avalanches are possible.

Snowpack structure

Good nocturnal outgoing radiation, the snowpack can re-freeze, then soften during the daytime hours. On sunny slopes the snowpack is thoroughly wet up to intermediate altitudes. On high altitude shady slopes there are trigger-sensitive layers embedded which are still prone to triggering. At low altitudes there is little snow on the ground.

Weather

Scattered clouds during the night will not prevent outgoing radiation. Tuesday will be sunny with good visibility. Winds light to moderate, the zero-degree level at 2600m. Clouds will appear in the evening from the west. At 2000 m: +5 degrees. Light to moderate westerly winds.

Outlook

Daytime rise of danger.

Avalanche problems



Danger ratings



Expositions



Avalanche report 20.03.2023 through 21.03.2023, afternoon

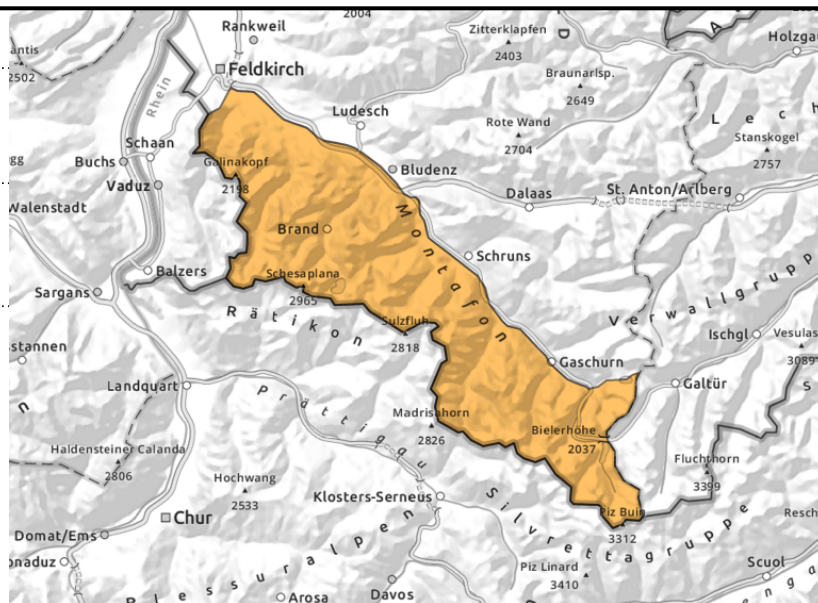
Rätikon West, Rätikon Ost, Silvretta



wet-snow, glide-snow
avalanches



mostly on north-facing slopes



Caution: trigger-sensitive weak layers on steep shady slopes and danger of wet-snow and glide-snow avalanches

Main danger: weak layers inside the old snowpack. Danger zones occur mostly in wind-loaded high-altitude shady steep terrain, behind abrupt discontinuities in the terrain and in gullies and bowls. Due to intensive solar radiation and daytime warming the snowpack forfeits its firmness and the likelihood of triggering increases. As a result of daytime warming and solar radiation, wet loose-snow avalanches are possible on very steep sunny slopes. On steep grass-covered slopes glide-snow avalanches are possible.

Snowpack structure

Good nocturnal outgoing radiation, the snowpack can re-freeze, then soften during the daytime hours. On sunny slopes the snowpack is thoroughly wet up to intermediate altitudes. On high altitude shady slopes there are trigger-sensitive layers embedded which are still prone to triggering. At low altitudes there is little snow on the ground.

Weather

Scattered clouds during the night will not prevent outgoing radiation. Tuesday will be sunny with good visibility. Winds light to moderate, the zero-degree level at 2600m. Clouds will appear in the evening from the west. At 2000 m: +5 degrees. Light to moderate westerly winds.

Outlook

Daytime rise of danger.

Translated by Jeffrey McCabe, www.creativtrans.com

Avalanche problems



Danger ratings



Expositions

