

Regionally considerable avalanche danger - Intermediate layers on shady slopes still trigger-sensitive

	1800 m	Allgäuer Alpen, Voralpenbereich, Bregenzerwaldgebirge	
	2200 m	Rätikon West, Rätikon Ost, Silvretta	
		Lechtaler Alpen, Lechquellengebirge, Verwall	

Avalanche problems



Danger ratings



Expositions



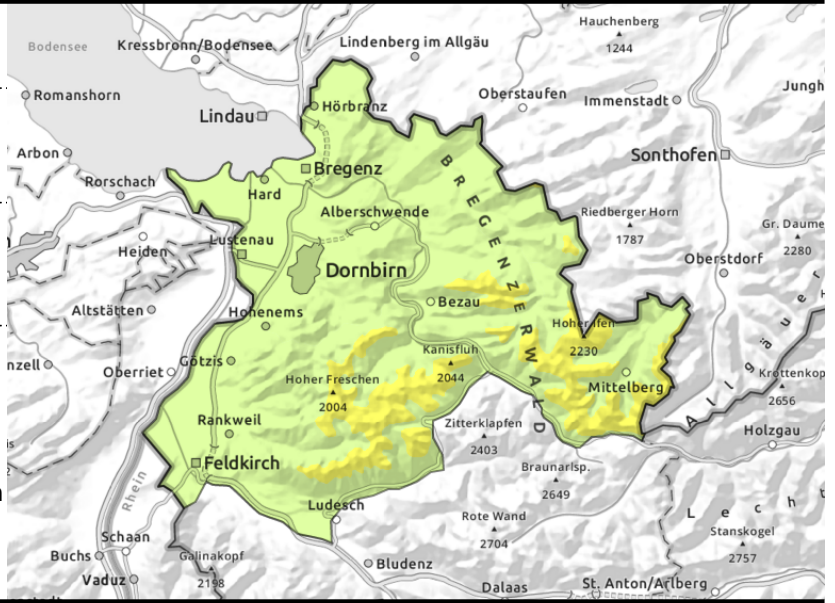
Allgäuer Alpen, Voralpenbereich, Bregenzerwaldgebirge



above appx. 1800 m, esp. on steep shady slopes



due to daytime warmth and solar radiation, small loose-snow avalanches due to warmth and solar radiation - small glide-snow avalanches on smooth grassy slopes



Fresh weak layers prone to triggering in steep shady terrain. Rise in danger of wet-snow and glide-snow avalanches during the daytime

Main danger: weak layers inside the old snowpack. Danger zones occur mostly in wind-loaded high-altitude shady steep terrain, behind abrupt discontinuities in the terrain and in gullies and bowls. Due to intensive solar radiation and daytime warming the snowpack forfeits its firmness and the likelihood of triggering increases. Small-to-medium slab avalanches can be triggered even by the weight of one sole skier. Naturally triggered avalanches are possible on very steep slopes. As a result of daytime warming and solar radiation, most slides and small loose-snow avalanches are possible on very steep sunny slopes. On steep grass-covered slopes glide-snow avalanches are possible.

Snowpack structure

A few cm of fresh snow is expected during the night above 1500m, will be deposited atop a trigger-sensitive snowpack surface esp. on shady slopes. Nocturnal outgoing radiation is reduced, thus the snowpack will freeze only superficially, during the daytime soften rapidly. On sunny slopes the snowpack is thoroughly wet up to intermediate altitudes, at high altitudes there are weak layers embedded inside the snowpack which can still trigger. At low altitudes there is little snow on the ground.

Weather

Nocturnal hours: rainfall and snow showers, snowfall level descending to nearly 1300m by morning. 3-7 degrees.
 Monday: reduced visibility until after noon due to residual cloud and fogbanks, snow showers will slacken off. In the afternoon, clouds will disperse further except in the Allgäu Alps and Lechquellen mountains. At 2000 m: -3 to 0 degrees. Light NW winds.

Outlook

On Tuesday, mostly sunny and mild. Due to warmth and solar radiation, danger of wet-snow and glide-snow avalanches will increase during the daytime hours.

Avalanche problems



Danger ratings



Expositions



Rätikon West, Rätikon Ost, Silvretta



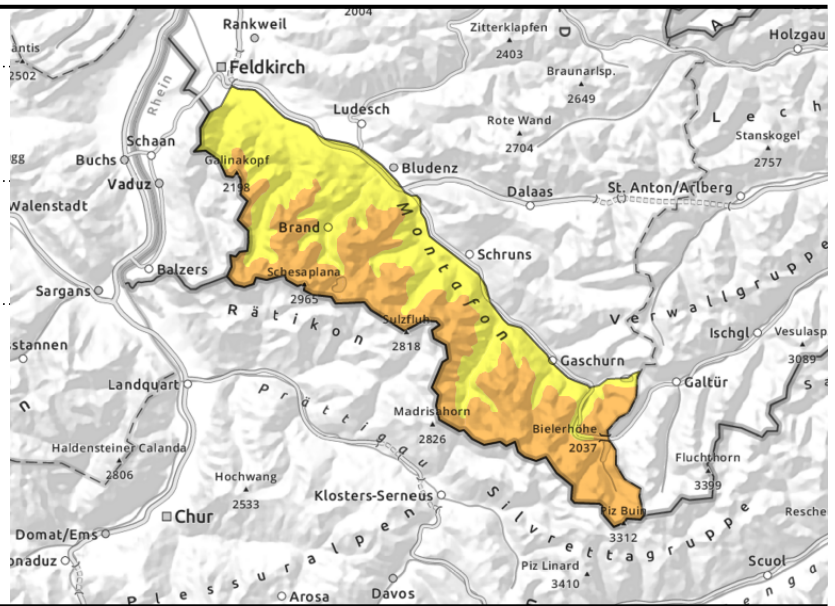
2200 m



weak layers on steep shady slopes



heed wet-snow and glide-snow avalanche threats



Caution: trigger-sensitive weak layers on steep shady slopes and danger of wet-snow and glide-snow avalanches

Main danger: weak layers inside the old snowpack. Danger zones occur mostly in wind-loaded high-altitude shady steep terrain, behind abrupt discontinuities in the terrain and in gullies and bowls. Due to intensive solar radiation and daytime warming the snowpack forfeits its firmness and the likelihood of triggering increases. Small-to-medium slab avalanches can be triggered even by the weight of one sole skier. Naturally triggered avalanches are possible on very steep slopes. As a result of daytime warming and solar radiation, most slides and small loose-snow avalanches are possible on very steep sunny slopes. On steep grass-covered slopes glide-snow avalanches are possible.

Snowpack structure

A few cm of fresh snow is expected during the night, will be deposited atop a trigger-sensitive snowpack surface esp. on shady slopes. Nocturnal outgoing radiation is reduced, thus the snowpack will freeze only superficially, during the daytime soften rapidly. On sunny slopes the snowpack is thoroughly wet up to intermediate altitudes, at high altitudes there are weak layers embedded inside the snowpack which can still trigger. At low altitudes there is little snow on the ground.

Weather

Nocturnal hours: rainfall and snow showers, snowfall level descending to nearly 1300m by morning. 3-7 degrees.

Monday: reduced visibility until after noon due to residual cloud and fogbanks, snow showers will slacken off. In the afternoon, clouds will disperse further except in the Allgäu Alps and Lechquellen mountains. At 2000 m: -3 to 0 degrees. Light NW winds.

Outlook

On Tuesday, mostly sunny and mild. Due to warmth and solar radiation, danger of wet-snow and glide-snow avalanches will increase during the daytime hours.

Avalanche problems



Danger ratings



Expositions



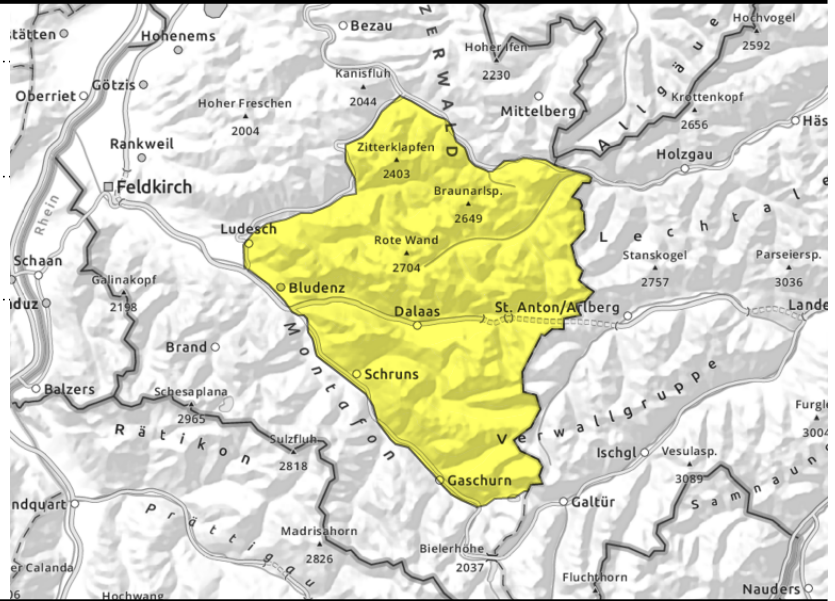
Lechtaler Alpen, Lechquellengebirge, Verwall



weak layers on steep shady slopes



heed wet-snow and glide-snow avalanche threats



Caution: trigger-sensitive weak layers on steep shady slopes and danger of wet-snow and glide-snow avalanches

Main danger: weak layers inside the old snowpack. Danger zones occur mostly in wind-loaded high-altitude shady steep terrain, behind abrupt discontinuities in the terrain and in gullies and bowls. Due to intensive solar radiation and daytime warming the snowpack forfeits its firmness and the likelihood of triggering increases. Small-to-medium slab avalanches can be triggered even by the weight of one sole skier. Naturally triggered avalanches are possible on very steep slopes. As a result of daytime warming and solar radiation, most slides and small loose-snow avalanches are possible on very steep sunny slopes. On steep grass-covered slopes glide-snow avalanches are possible.

Snowpack structure

A few cm of fresh snow is expected during the night above 1500m, will be deposited atop a trigger-sensitive snowpack surface esp. on shady slopes. Nocturnal outgoing radiation is reduced, thus the snowpack will freeze only superficially, during the daytime soften rapidly. On sunny slopes the snowpack is thoroughly wet up to intermediate altitudes, at high altitudes there are weak layers embedded inside the snowpack which can still trigger. At low altitudes there is little snow on the ground.

Weather

Nocturnal hours: rainfall and snow showers, snowfall level descending to nearly 1300m by morning. 3-7 degrees.

Monday: reduced visibility until after noon due to residual cloud and fogbanks, snow showers will slacken off. In the afternoon, clouds will disperse further except in the Allgäu Alps and Lechquellen mountains. At 2000 m: -3 to 0 degrees. Light NW winds.

Outlook

On Tuesday, mostly sunny and mild. Due to warmth and solar radiation, danger of wet-snow and glide-snow avalanches will increase during the daytime hours.

Translated by Jeffrey McCabe, www.creativtrans.com

Avalanche problems



Danger ratings



Expositions

