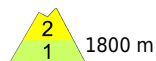


Regionally considerable avalanche danger - Intermediate layers on shady slopes still trigger-sensitive



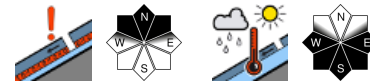
1800 m

Allgäuer Alpen, Voralpenbereich, Bregenzerwaldgebirge



2200 m

Lechtaler Alpen, Verwall, Lechquellengebirge, Rätikon West, Rätikon Ost, Silvretta



Avalanche problems



Danger ratings



Expositions



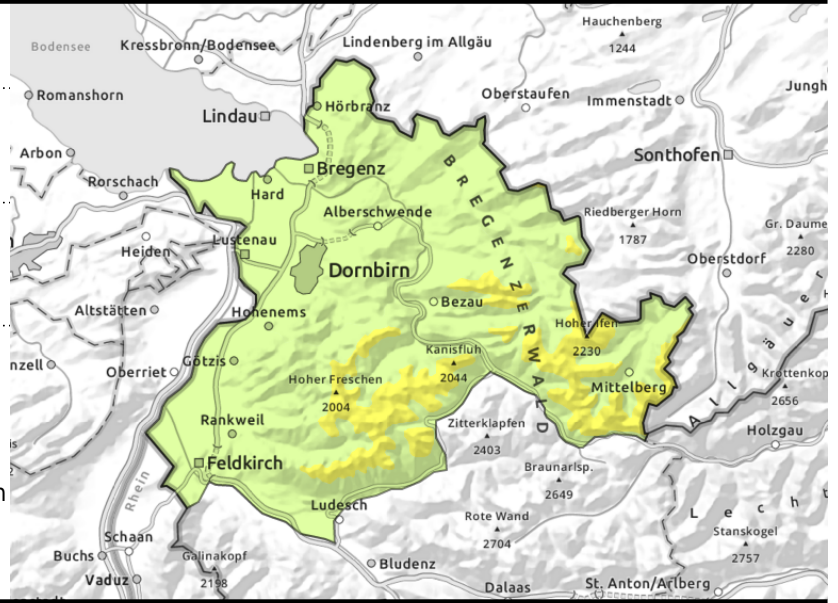
Allgäuer Alpen, Voralpenbereich, Bregenzerwaldgebirge



above appx. 1800 m, esp. on steep shady slopes



due to daytime warmth and solar radiation, small loose-snow avalanches due to warmth and solar radiation - small glide-snow avalanches on smooth grassy slopes



Fresh weak layers prone to triggering in steep shady terrain. Rise in danger of wet-snow and glide-snow avalanches during the daytime

Main danger: weak layers inside the old snowpack. Danger zones occur mostly in wind-loaded high-altitude shady steep terrain, behind abrupt discontinuities in the terrain and in gullies and bowls. Due to intensive solar radiation and daytime warming the snowpack forfeits its firmness and the likelihood of triggering increases. Small-to-medium slab avalanches can be triggered even by the weight of one sole skier. Naturally triggered avalanches are possible on very steep slopes. As a result of daytime warming and solar radiation, most slides and small loose-snow avalanches are possible on very steep sunny slopes. On steep grass-covered slopes glide-snow avalanches are possible.

Snowpack structure

The snowpack was able to settle and consolidate in the warmth and solar radiation. On sunny slopes it is thoroughly wet up to intermediate altitudes; on high-altitude shady slopes there are still trigger-sensitive layers which can be triggered. Due to heavy cloud the nocturnal outgoing radiation is reduced, the snowpack will not freeze and firmness will be lost. At low altitudes there is hardly any snow on the ground.

Weather

Nocturnal hours: heavily overcast skies, but dry. Temperatures: 2-4 degrees.
 Sunday: heavily overcast skies, reducing visibility, only brief bright intervals. In the afternoon, a few showers are possible, snowfall level at 1800 m. At 2000 m: 1 degrees. Light to moderate W/SW winds.

Outlook

On Monday, residual clouds will disperse, sunshine is then expected. Warmth will make the danger of wet-snow and glide-snow avalanches increase again.

Avalanche problems



Danger ratings



Expositions

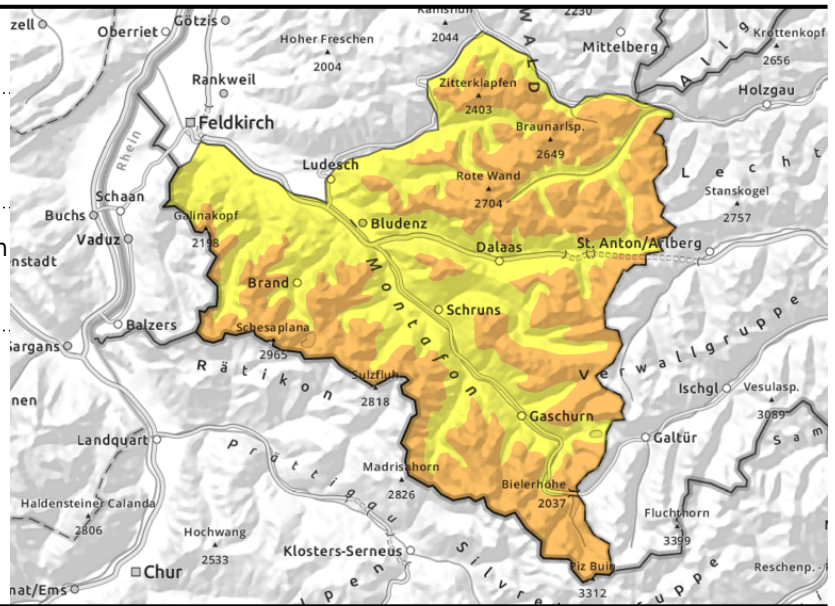


Lechtaler Alpen, Verwall, Lechquellengebirge, Rätikon West, Rätikon Ost, Silvretta



often triggerable weak layers in the old snowpack

heed wet-snow and glide-snow avalanches



Trigger-sensitive weak layers on steep shady slopes. Danger of wet-snow and glide-snow avalanches.

Main danger: weak layers inside the old snowpack. Danger zones occur mostly in wind-loaded high-altitude shady steep terrain, behind abrupt discontinuities in the terrain and in gullies and bowls. Due to intensive solar radiation and daytime warming the snowpack forfeits its firmness and the likelihood of triggering increases. Small-to-medium slab avalanches can be triggered even by the weight of one sole skier. Naturally triggered avalanches are possible on very steep slopes. As a result of daytime warming and solar radiation, most slides and small loose-snow avalanches are possible on very steep sunny slopes. On steep grass-covered slopes glide-snow avalanches are possible.

Snowpack structure

The snowpack was able to settle and consolidate in the warmth and solar radiation. On sunny slopes it is thoroughly wet up to intermediate altitudes; on high-altitude shady slopes there are still trigger-sensitive layers which can be triggered. Due to heavy cloud the nocturnal outgoing radiation is reduced, the snowpack will not freeze and firmness will be lost. At low altitudes there is hardly any snow on the ground.

Weather

Nocturnal hours: heavily overcast skies, but dry. Temperatures: 2-4 degrees.

Sunday: heavily overcast skies, reducing visibility, only brief bright intervals. In the afternoon, a few showers are possible, snowfall level at 1800 m. At 2000 m: 1 degrees. Light to moderate W/SW winds.

Outlook

On Monday, residual clouds will disperse, sunshine is then expected. Warmth will make the danger of wet-snow and glide-snow avalanches increase again.

Translated by Jeffrey McCabe, www.creativtrans.com

Avalanche problems



Danger ratings



Expositions

