

Considerable avalanche danger regionally - Rising danger during the daytime

	<p>1800 m Allgäuer Alpen, Voralpenbereich, Bregenzerwaldgebirge</p>	
	<p>2000 m Lechtaler Alpen, Lechquellengebirge, Verwall, Silvretta, Rätikon Ost, Rätikon West</p>	

Avalanche problems	Danger ratings	Expositions

Avalanche report for Friday, 17.03.2023

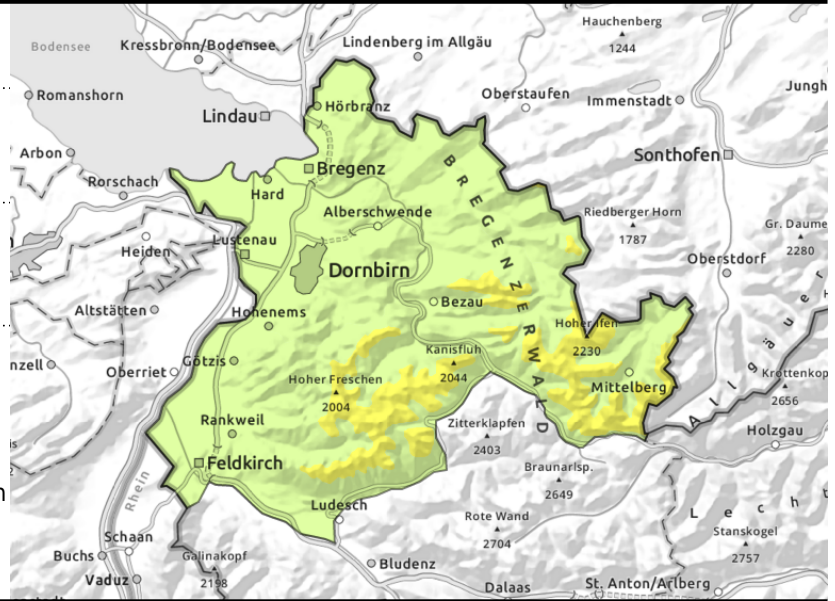
Allgäuer Alpen, Voralpenbereich, Bregenzerwaldgebirge



above appx. 1800 m, esp. on steep shady slopes



due to daytime warmth and solar radiation, small loose-snow avalanches due to warmth and solar radiation - small glide-snow avalanches on smooth grassy slopes



Fresh weak layers prone to triggering in steep shady terrain. Rise in danger of wet-snow and glide-snow avalanches during the daytime

Main danger: weak layers inside the old snowpack. Danger zones occur mostly in wind-loaded high-altitude shady steep terrain, behind abrupt discontinuities in the terrain and in gullies and bowls. Due to intensive solar radiation and daytime warming the snowpack forfeits its firmness and the likelihood of triggering increases. Small-to-medium slab avalanches can be triggered even by the weight of one sole skier. Naturally triggered avalanches are possible on very steep slopes. As a result of daytime warming and solar radiation, most slides and small loose-snow avalanches are possible on very steep sunny slopes. On steep grass-covered slopes glide-snow avalanches are possible.

Snowpack structure

The snow which has fallen since Monday has settled and is increasingly bonded with the compact old snowpack. At high altitudes the latest fresh snow and drifts are still prone to triggering in places. Solar radiation and daytime warming will lead to the snowpack forfeiting its firmness during the course of the day. At low altitudes there is little snow on the ground.

Weather

Nocturnal hours: in the early part of the night it will be dry, skies will be clear with scattered clouds. In early morning cloud cover will move in. Friday: after clouds withdraw and a few snow showers come to an end there will be a morning phase of dry weather with brisk SW winds. Later in the day, visibility will deteriorate, snowfall will set in, winds will intensify. At 2000 m: +1 degree. Brisk winds to start with, later on intensifying further, from W/SW.

Outlook

Little change on Saturday, sunshine will dominate. Danger of dry-snow avalanches will gradually recede. Danger of wet-snow avalanches will again increase.

Avalanche problems



Danger ratings



Expositions



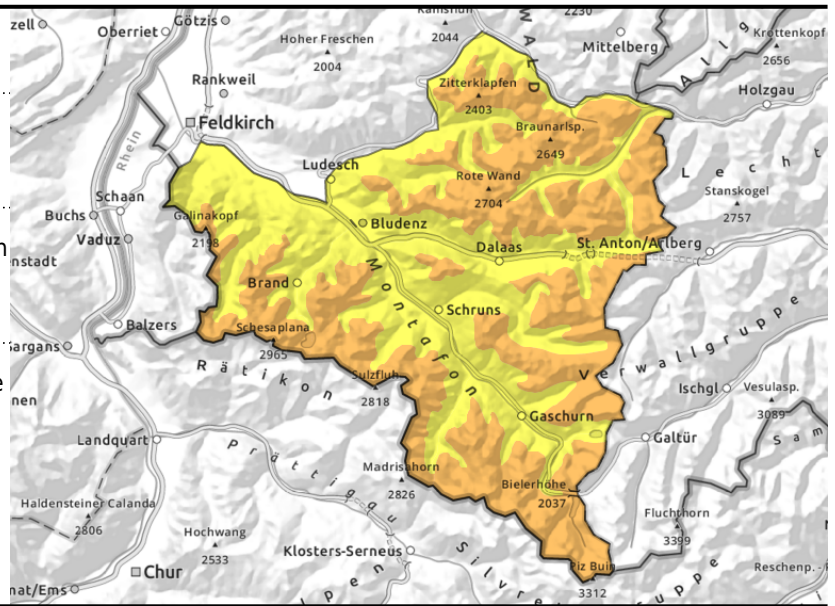
Avalanche report for Friday, 17.03.2023

Lechtaler Alpen, Lechquellengebirge, Verwall, Silvretta, Rätikon Ost, Rätikon West



often triggerable weak layers in old snowpack - mostly on high-altitude steep shady slopes

loss of firmness due to daytime warmth and solar radiation



At high altitudes considerable avalanche danger. Rise in danger during daytime hours.

Main danger: weak layers inside the old snowpack. Danger zones occur mostly in wind-loaded high-altitude shady steep terrain, behind abrupt discontinuities in the terrain and in gullies and bowls. Due to intensive solar radiation and daytime warming the snowpack forfeits its firmness and the likelihood of triggering increases. Small-to-medium slab avalanches can be triggered even by the weight of one sole skier. Naturally triggered avalanches are possible on very steep slopes. As a result of daytime warming and solar radiation, most slides and small loose-snow avalanches are possible on very steep sunny slopes. On steep grass-covered slopes glide-snow avalanches are possible.

Snowpack structure

With increasing altitude, bonding inside the fresh snow and snowdrift layers esp. to the old snowpack surface deteriorates and is prone to triggering. On high-altitude very steep shady slopes the snowpack at mid-level has unfavourable layers. Due to warming and radiation it forfeits its firmness and the danger of triggering, including naturally triggered releases, rises. Even one sole skier can trigger avalanches. Esp. on steep W/N/E facing slopes above 2000 m on Thursday in the Silvretta and Verwall several medium-sized and also large-sized naturally triggered avalanches were observed. At low altitudes there is little snow on the ground.

Weather

Nocturnal hours: variable skies, increasing foehn impact, dry and above-zero temperatures (-1 to +4 degrees). Friday: serene weather conditions in the mountains, dry and warm air, frequent sunshine, only thin cirrus clouds. Foehn winds rising. At 2000 m: 6-9 degrees. Light westerly winds, in the foehn lanes brisk southerly winds.

Outlook

Little change on Saturday, sunshine will dominate. Danger of dry-snow avalanches will gradually recede. Danger of wet-snow avalanches will again increase.

Translated by Jeffrey McCabe, www.creativtrans.com

Avalanche problems



Danger ratings



Expositions

