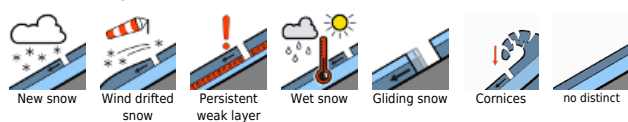


Regionally considerable avalanche danger

	<p>1800 m Allgäuer Alpen, Voralpenbereich, Bregenzerwaldgebirge</p>	
	<p>2200 m Lechtaler Alpen, Lechquellengebirge, Verwall, Silvretta, Rätikon Ost, Rätikon West</p>	

Avalanche problems



Danger ratings



Expositions



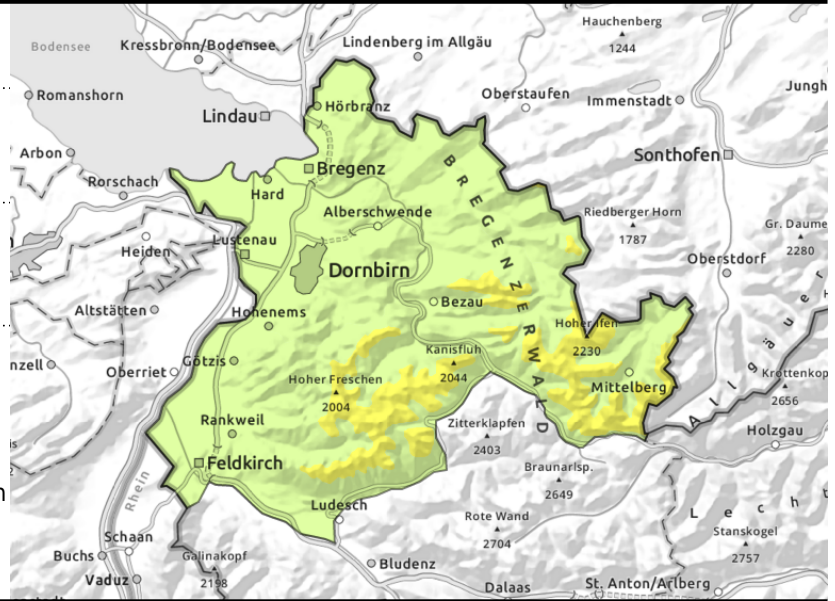
Allgäuer Alpen, Voralpenbereich, Bregenzwaldgebirge



above appx. 1800 m



due to daytime warmth and solar radiation, small loose-snow avalanches due to warmth and solar radiation - small glide-snow avalanches on smooth grassy slopes



Fresh snow and snowdrifts prone to triggering at high altitudes

Fresh snowdrift accumulations at high altitudes can trigger small-to-medium sized slab avalanches by large additional loading. Danger zones occur esp. in steep ridgeline terrain in W/N/E aspects and in wind-loaded gullies and bowls. As daytime temperatures rise and solar radiation intensifies, small loose-snow avalanches are possible on very steep sunny slopes. On steep smooth grassy slopes, small glide-snow avalanches are possible.

Snowpack structure

The fresh snow which has fallen since Monday has been able to settle and bond with the compact old snowpack surface. At high altitudes the recent bout of fresh snow and drifts is still prone to triggering in places. Solar radiation and daytime warming on sunny slopes has caused the snowpack to forfeit its firmness. At low altitudes there is only little snow on the ground.

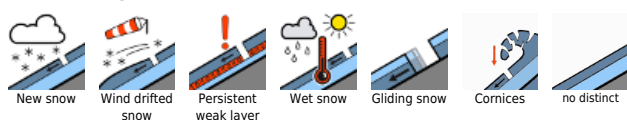
Weather

Nocturnal hours: heavy cloud, intermittent minor snow showers. In the morning, clouds will disperse. Thursday: extensive cloudbanks will hamper the sunshine intermittently. All in all, conditions will be pleasant, visibility adequate but diffuse. At 2000 m: rising from -4 to +2 degrees. Moderate W/NW winds.

Outlook

Friday will be very sunny and warm: at 2000 m: from +6 to +9 degrees. At high altitudes and in foehn lanes, strong southerly winds will be noticeably. Danger of dry-snow avalanches will gradually recede. Danger of wet-snow avalanches will increase again.

Avalanche problems



Danger ratings



Expositions



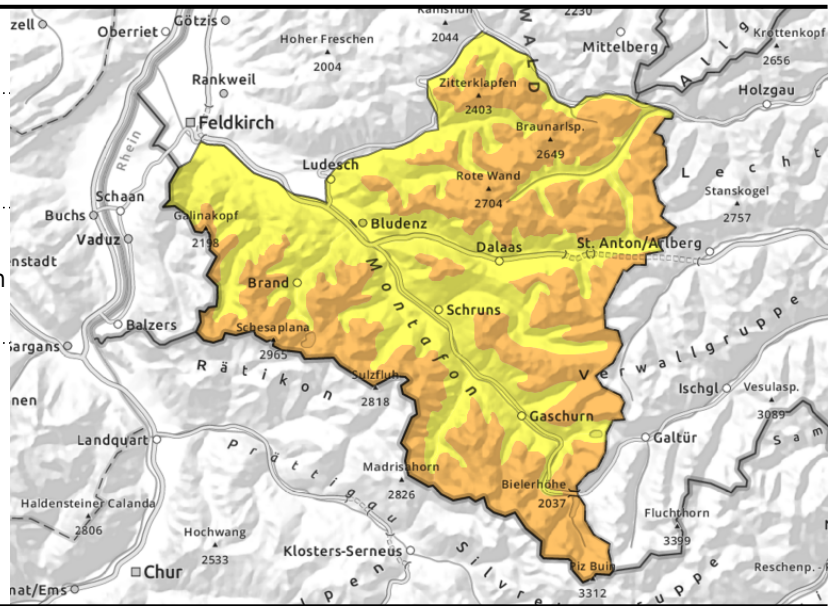
Lechtaler Alpen, Lechquellengebirge, Verwall, Silvretta, Rätikon Ost, Rätikon West



wind-loaded steep slopes, behind abrupt discontinuities in the terrain, gullies, bowls



often weak layers at mid-level in the snowpack



Considerable avalanche danger at high altitudes

Main danger: fresh snow and snowdrift accumulations and the weak snowpack. Danger zones occur behind abrupt discontinuities in the terrain and in wind-loaded gullies and bowls. They increase in size and frequency during the course of the day. Small to medium slab avalanches can be triggered by one sole skier. Due to rising daytime temperatures and solar radiation the snowpack is prone to triggering. Naturally triggered avalanches are possible in very steep terrain, and if they fracture to deeper layers they can grow to large size. Activities in backcountry demand experience in assessing the terrain and avalanche dangers on-site. In areas with rain impact in all aspects, slides and small wet-snow avalanches can be expected. On steep smooth grass-covered slopes, glide-snow avalanches are also possible.

Snowpack structure

With ascending altitude, bonding of fresh snow and drifts to the old snowpack surface deteriorates. At high altitudes on very steep slopes the mid-level part of the snowpack has unfavourable layers which can be triggered mostly by large additional loading. Mostly on steep NE/E/SE facing slopes above 2200 m some medium and large naturally triggered slab avalanches were observed on Wednesday in the Silvretta and Verwall. Also artificially triggered avalanches led to large-sized releases. At low altitudes there is only little snow on the ground.

Weather

Nocturnal hours: heavy cloud, intermittent minor snow showers. In the morning, clouds will disperse. Thursday: extensive cloudbanks will hamper the sunshine intermittently. All in all, conditions will be pleasant, visibility adequate but diffuse. At 2000 m: rising from -4 to +2 degrees. Moderate W/NW winds.

Outlook

Friday will be very sunny and warm: at 2000 m: from +6 to +9 degrees. At high altitudes and in foehn lanes, strong southerly winds will be noticeably. Danger of dry-snow avalanches will gradually recede. Danger of wet-snow avalanches will increase again.

Translated by Jeffrey McCabe, www.creativtrans.com

Avalanche problems



Danger ratings



Expositions

