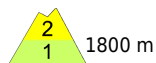
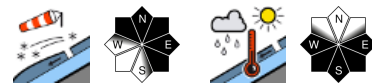


Regionally considerable avalanche danger at high altitudes due to fresh snow and drifts



Allgäuer Alpen, Voralpenbereich, Bregenzerwaldgebirge



Lechtaler Alpen, Lechquellengebirge, Verwall, Silvretta, Rätikon Ost, Rätikon West



Avalanche problems



Danger ratings



Expositions



Allgäuer Alpen, Voralpenbereich, Bregenzerwaldgebirge



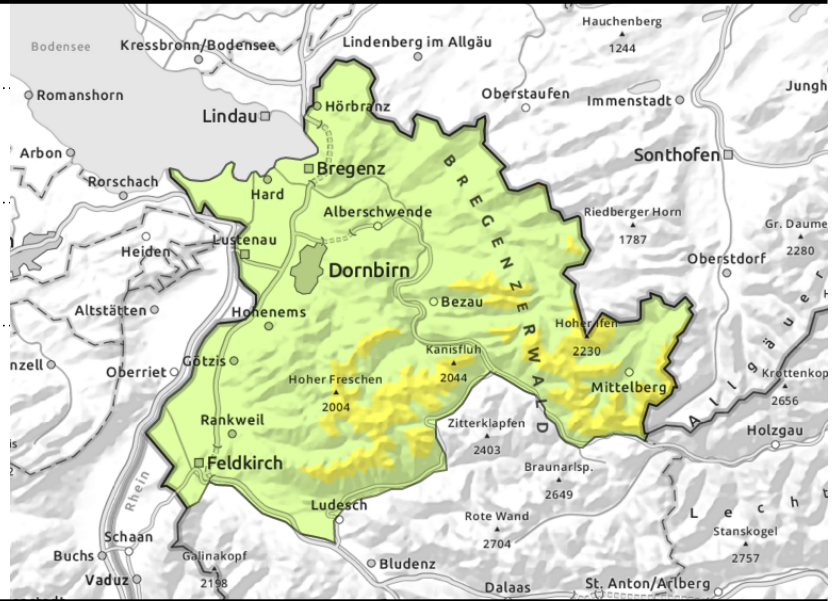
1800 m



above appx. 1800 m



small loose-snow avalanches due to warmth and solar radiation - small glide-snow avalanches on smooth grassy slopes



Fresh snow and snowdrifts prone to triggering at high altitudes

Fresh snowdrift accumulations at high altitudes can trigger small-to-medium sized slab avalanches by large additional loading. Danger zones occur esp. in steep ridgeline terrain in NW/N/SE aspects and in wind-loaded gullies and bowls. In zones where there is rain impact, slides and small wet avalanches can be expected in all aspects. On steep smooth grassy slopes, small glide-snow avalanches are possible.

Snowpack structure

The fresh snow which has fallen since Monday lies atop a moist, compact and settled old snowpack surface at high altitudes. Intermittent strong westerly winds transported the snow, generated new snowdrifts. Fresh and older drifts are increasingly prone to triggering with ascending altitude. Due to rain, mild temperatures and reduced nocturnal outgoing radiation, the snowpack has been weakened at intermediate altitudes. At low altitudes there is only little snow on the ground.

Weather

Nocturnal hours: heavily overcast skies with snow showers down to low lying areas. In the mountains 10-20 cm of fresh snow is anticipated. Wednesday: variable conditions, clouds and fogbanks will disperse, some sunshine is likely. At 2000 m: -10 to -8 degrees. Moderate NW winds.

Outlook

Thursday will be pleasant in spite of widespread cloudbanks, and milder. Danger of dry-snow avalanches will gradually diminish. Danger of wet-snow avalanches could increase again.

Avalanche problems



Danger ratings



Expositions



Avalanche report for Wednesday, 15.03.2023

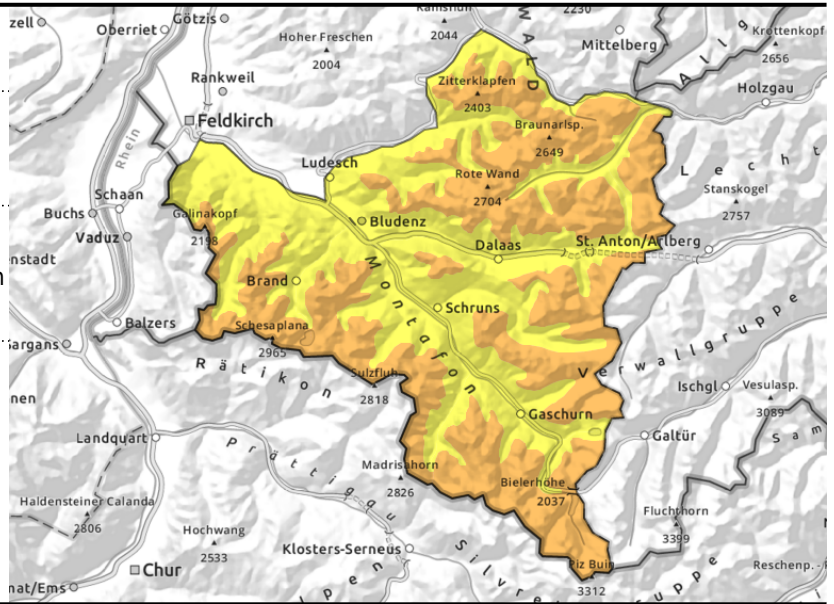


Lechtaler Alpen, Lechquellengebirge, Verwall, Silvretta, Rätikon Ost, Rätikon West



wind-loaded steep slopes, behind abrupt discontinuities in the terrain, gullies, bowls

slides and small wet-snow avalanches; small glide-snow avalanches on smooth grassy slopes



Heed snowdrift accumulations at high altitudes

Main danger: fresh snowdrift accumulations at high altitudes. Danger zones occur behind abrupt discontinuities in the terrain and in wind-loaded gullies and bowls. They increase in size and frequency during the course of the day. Small to medium slab avalanches can be triggered by one sole skier. Activities in backcountry demand experience in assessing the terrain and avalanche dangers on-site. In areas with rain impact in all aspects, slides and small wet-snow avalanches can be expected. On steep smooth grass-covered slopes, glide-snow avalanches are also possible.

Snowpack structure

The latest round of fresh snow lies deposited atop a moist and largely compact old snowpack surface. Intermittent strong westerly winds transported the snow, generated new snowdrifts. Fresh and older drifts are increasingly prone to triggering with ascending altitude. Due to rain, mild temperatures and reduced nocturnal outgoing radiation, the snowpack has been weakened at intermediate altitudes. At low altitudes there is only little snow on the ground.

Weather

Nocturnal hours: heavily overcast skies with snow showers down to low lying areas. In the mountains 10-20 cm of fresh snow is anticipated. Wednesday: variable conditions, clouds and fogbanks will disperse, some sunshine is likely. At 2000 m: -10 to -8 degrees. Moderate NW winds.

Outlook

Thursday will be pleasant in spite of widespread cloudbanks, and milder. Danger of dry-snow avalanches will gradually diminish. Danger of wet-snow avalanches could increase again.

Translated by Jeffrey McCabe, www.creativtrans.com

Avalanche problems



Danger ratings



Expositions

