

Attention winter sports enthusiasts: often considerable avalanche danger at high altitudes due to fresh snow and snowdrifts

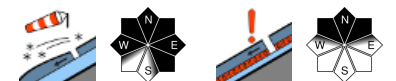


Allgäuer Alpen, Bregenzerwaldgebirge, Voralpenbereich

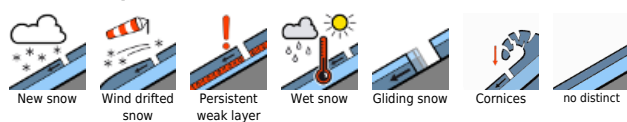


2000 m

Lechtaler Alpen, Lechquellengebirge, Verwall, Silvretta, Rätikon Ost, Rätikon West



Avalanche problems



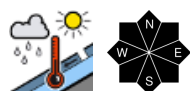
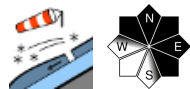
Danger ratings



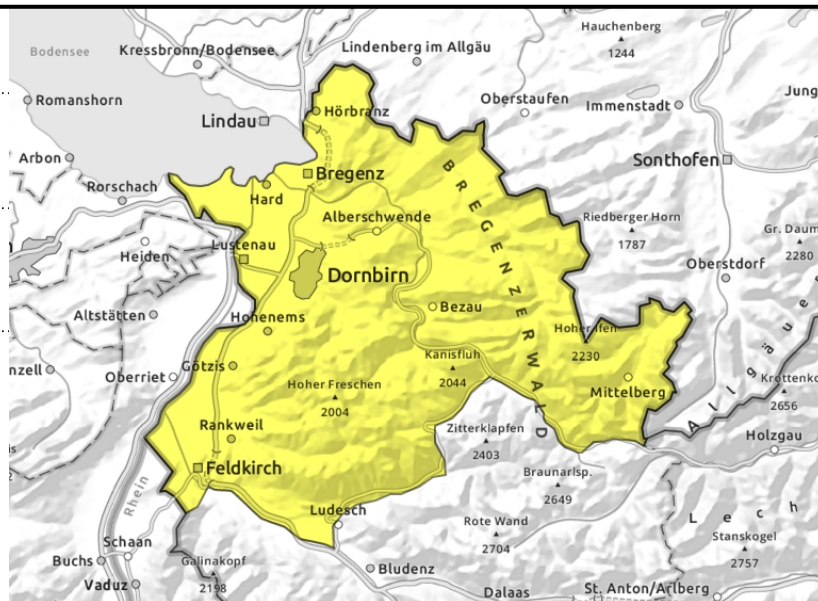
Expositions



Allgäuer Alpen, Bregenzerwaldgebirge, Voralpenbereich



mit Temperaturanstieg und Regen feuchte Rutsche und Lockerschneelawinen



Fresh snow and drifts are prone to triggering above the treeline

Fresh snow and fresh drifts can be triggered even by the weight of one skier above the treeline in particular, and release small-to-medium slab avalanches. Danger zones occur esp. in steep ridgeline terrain on NW/N/SE facing slopes and in wind-loaded gullies and bowls. Frequency and size of danger zones increase with ascending altitude. Due to higher temperatures, moist slides and loose-snow avalanches can trigger on very steep slopes at low and intermediate altitudes.

Snowpack structure

Widespread 10-20 cm of snow is expected, up to 30 cm in the Allgau Alps. Intermittently strong winds will transport the fresh snow, generate more snowdrifts above the treeline. The drifts are being deposited atop older snowdrifts and soft layers. Bonding is generally inadequate, thus prone to triggering. Inside the snowdrifts, furthermore, are weak layers.

Weather

Nocturnal hours: rainfall and snowfall from dense clouds, a bit stronger in the mountains. The snowfall level will ascend slowly to nearly 1000 m. Sunday: gray skies until afternoon, light to moderate snowfall. Mild air masses will move in, the snowfall level ascend to 1500 m. By evening precipitation will stop, clouds will disperse. At 2000 m: -6 to -2 degrees. Brisk to strong W/NW winds.

Outlook

Monday will be quite sunny and mild, with foehn impact. The zero-degree level will ascend to over 3000 m. At intermediate altitudes wet avalanches will be possible. At high altitudes the snow will be transported, new drifts will be generated.

Avalanche problems



Danger ratings



Expositions



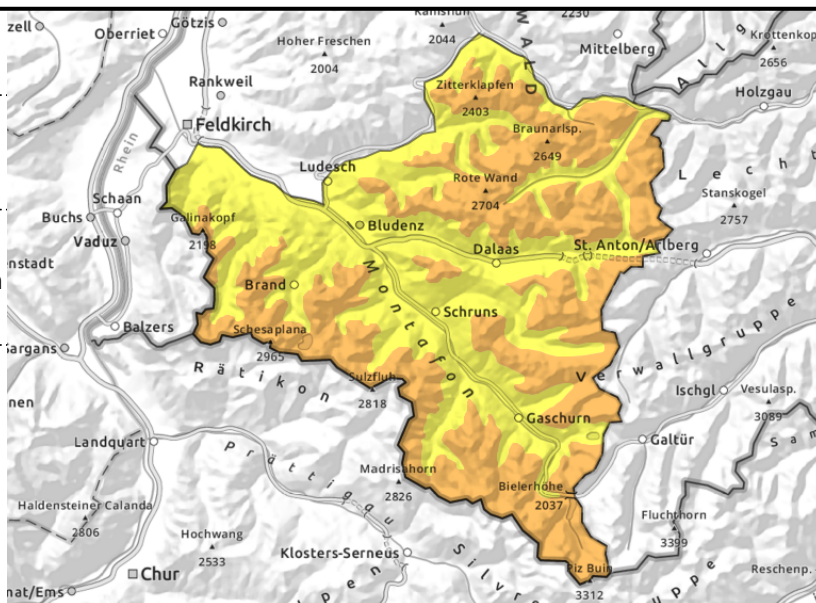
Lechtaler Alpen, Lechquellengebirge, Verwall, Silvretta, Rätikon Ost, Rätikon West



wind-loaded steep slopes, behind abrupt discontinuities in the terrain, gullies, bowls



steep shady slopes have unfavourable layers



Attention winter sports enthusiasts: considerable danger due to fresh snow and snowdrifts

Avalanche danger is considerable. Snowdrift accumulations are prone to triggering. Danger zones occur on wind-loaded steep slopes, behind abrupt discontinuities in the terrain, in gullies and bowls, increase in frequency with ascending altitude. One sole skier can trigger a medium-sized slab avalanche. Glide-cracks and whumpf noises are indicators of imminent danger. Activities in backcountry require experience in assessing danger on-site. At low altitudes the danger is generally moderate. Increasing moist slides and loose-snow avalanches will be possible.

Snowpack structure

Widespread 10-20 cm of snow is expected, up to 30 cm in the Allgau Alps. Intermittently strong winds will transport the fresh snow, generate more snowdrifts above the treeline. The drifts are being deposited atop older snowdrifts and soft layers. Bonding is generally inadequate, thus prone to triggering. Inside the snowdrifts, furthermore, are weak layers, generally triggerable only by large additional loading.

Weather

Nocturnal hours: rainfall and snowfall from dense clouds, a bit stronger in the mountains. The snowfall level will ascend slowly to nearly 1000 m. Sunday: gray skies until afternoon, light to moderate snowfall. Mild air masses will move in, the snowfall level ascend to 1500 m. By evening precipitation will stop, clouds will disperse. At 2000 m: -6 to -2 degrees. Brisk to strong W/NW winds.

Outlook

Monday will be quite sunny and mild, with foehn impact. The zero-degree level will ascend to over 3000 m. At intermediate altitudes wet avalanches will be possible. At high altitudes the snow will be transported, new drifts will be generated.

Translated by Jeffrey McCabe, www.creativtrans.com

Avalanche problems



Danger ratings



Expositions

