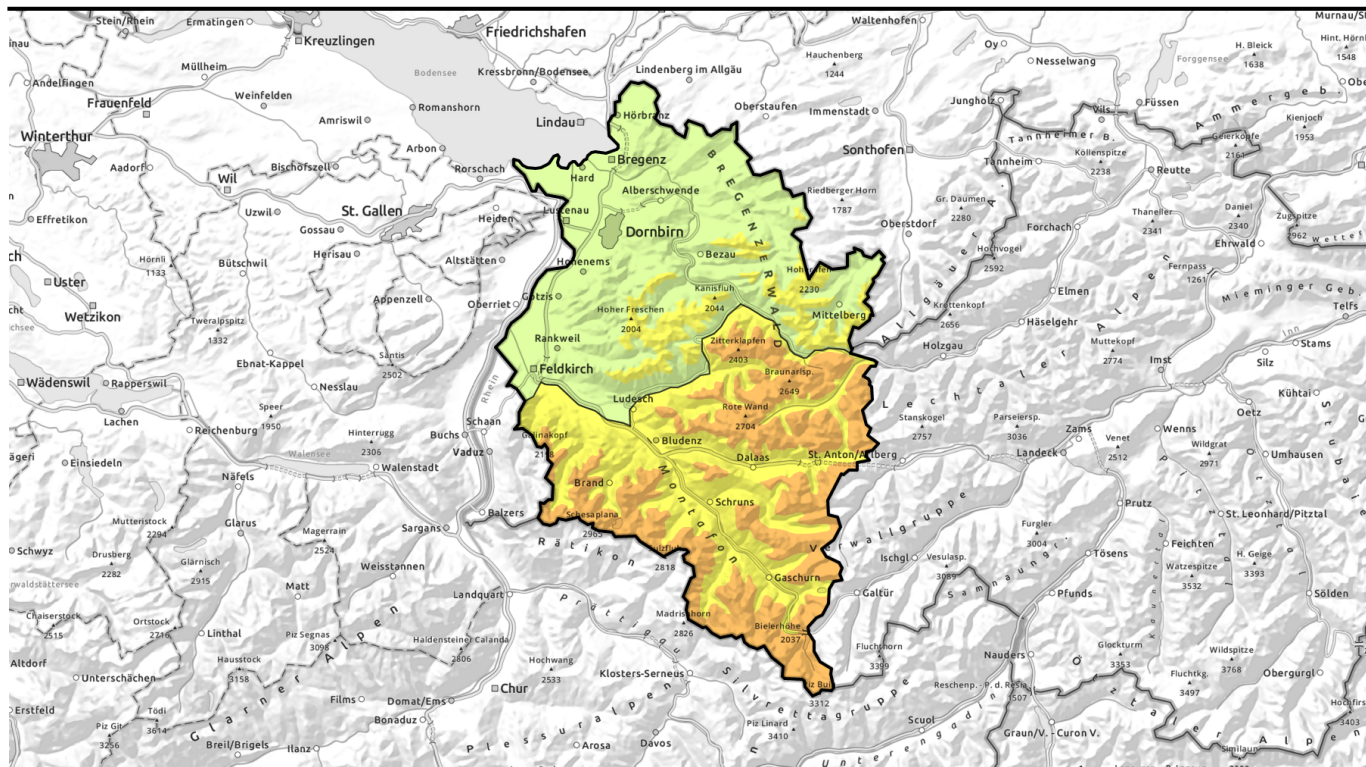


Avalanche report for **Saturday, 11.03.2023**



Widespread rise in avalanche danger at high altitudes due to fresh snow and wind



Allgäuer Alpen, Bregenzerwaldgebirge, Voralpenbereich



Lechtaler Alpen, Lechquellengebirge, Verwall, Silvretta, Rätikon Ost, Rätikon West



Avalanche problems



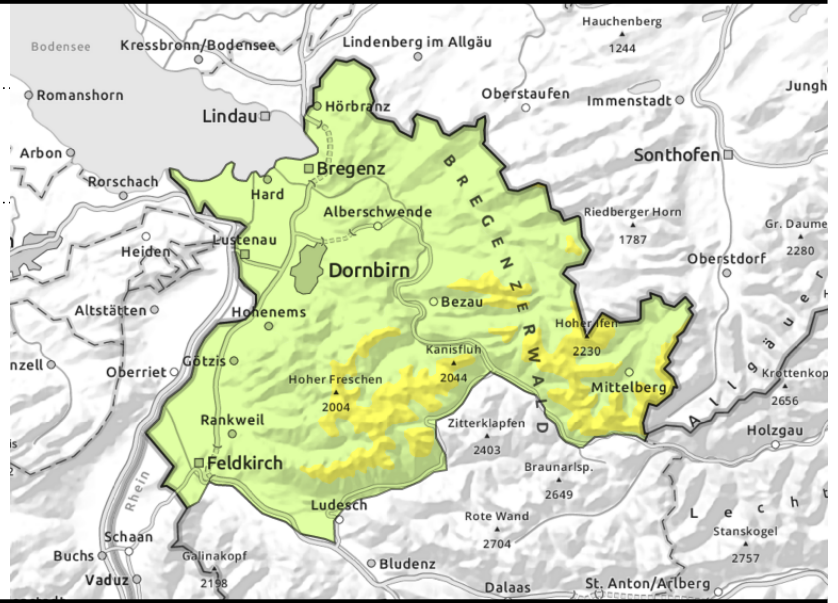
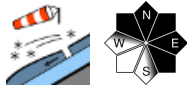
Danger ratings



Expositions



Allgäuer Alpen, Bregenzerwaldgebirge, Voralpenbereich



Heed: fresh snowdrifts - Caution: steep ridgeline terrain

Avalanche danger above the treeline is moderate, below that altitude danger is low. Fresh snowdrifts can often be triggered as a slab avalanche even by the weight of one sole skier. Danger zones occur esp. in steep ridgeline terrain on NW/N/SE facing slopes and in wind-loaded gullies and bowls. Frequency and size of danger zones increase with ascending altitude. Above the treeline, avalanches can reach medium size.

Snowpack structure

Fresh snow and snowdrifts lie deposited atop a well settled (at intermediate altitudes on a melt-freeze crust), on south-facing slopes often on bare ground. Strong-to-stormy winds transported the fresh snow, generated new drifts, depositing them atop soft layers which are prone to triggering. Inside the snowdrifts themselves there are weak layers.

Weather

Nocturnal hours: on Friday night a cold front will move in, bringing moderate precipitation, strong winds, lower temperatures. Snowfall level will descend to the valley floor. Saturday: dense cloud cover, reduced visibility, snowfall will terminate temporarily then begin again at midday. At 2000 m: -6 degrees. Brisk to strong W/NW winds.

Outlook

With higher temperatures and rainfall, avalanche danger could rise further. Wet avalanches possible at intermediate altitudes. At high altitudes the drifts are prone to triggering.

Avalanche problems



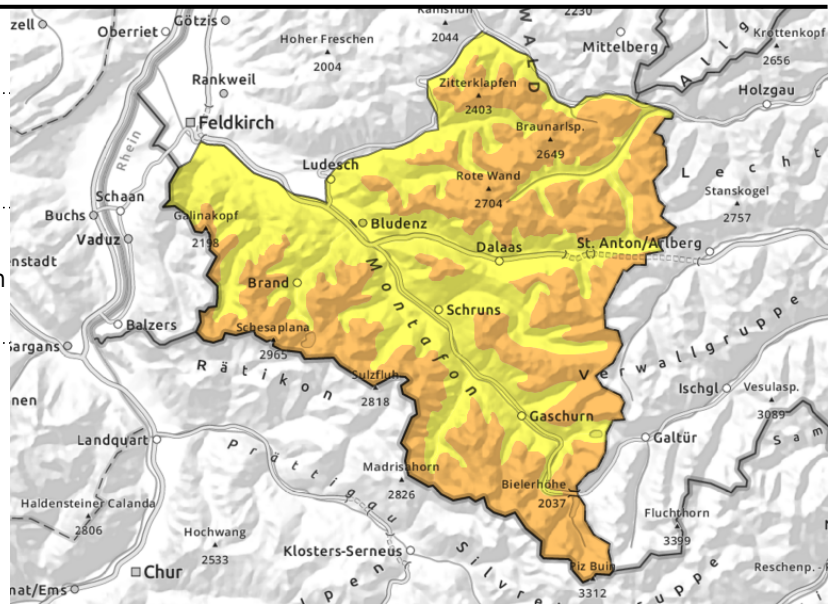
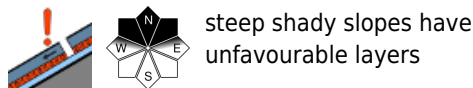
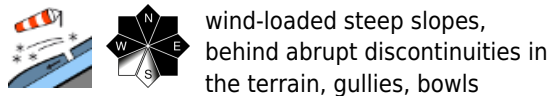
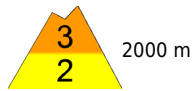
Danger ratings



Expositions



Lechtaler Alpen, Lechquellengebirge, Verwall, Silvretta, Rätikon Ost, Rätikon West



Heed fresh snowdrift accumulations at high altitudes

Avalanche danger is considerable. Snowdrift accumulations are prone to triggering. Danger zones occur on wind-loaded steep slopes, behind abrupt discontinuities in the terrain, in gullies and bowls, increase in frequency with ascending altitude. One sole skier can trigger a medium-sized slab avalanche. Glide-cracks and whumpf noises are indicators of imminent danger. Activities in backcountry require experience in assessing danger on-site. At low altitudes the danger is generally moderate, below the treeline often low.

Snowpack structure

Strong to stormy winds transported the fresh snow, generated new drifts, depositing them atop soft layers which are prone to triggering. Inside the snowdrifts themselves there are weak layers. On shady slopes there is often powder or surface hoar. Weak layer lurk inside the snowpack, but they are likely to trigger only by large additional loading.

Weather

Nocturnal hours: on Friday night a cold front will move in, bringing moderate precipitation, strong winds, lower temperatures. Snowfall level will descend to the valley floor. Saturday: dense cloud cover, reduced visibility, snowfall will terminate temporarily then begin again at midday. At 2000 m: -6 degrees. Brisk to strong W/NW winds.

Outlook

With higher temperatures and rainfall, avalanche danger could rise further. Wet avalanches possible at intermediate altitudes. At high altitudes the drifts are prone to triggering.

Translated by Jeffrey McCabe, www.creativtrans.com

Avalanche problems



Danger ratings



Expositions

