

Due to precipitation and wind, regional rise in avalanche danger - heed fresh snowdrifts at high altitudes



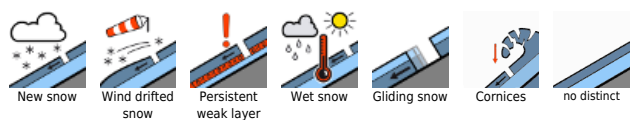
2000 m
Verwall, Silvretta, Rätikon Ost, Rätikon West, Lechquellengebirge, Lechtaler Alpen, Allgäuer Alpen



Voralpenbereich, Bregenzerwaldgebirge



Avalanche problems



Danger ratings



Expositions



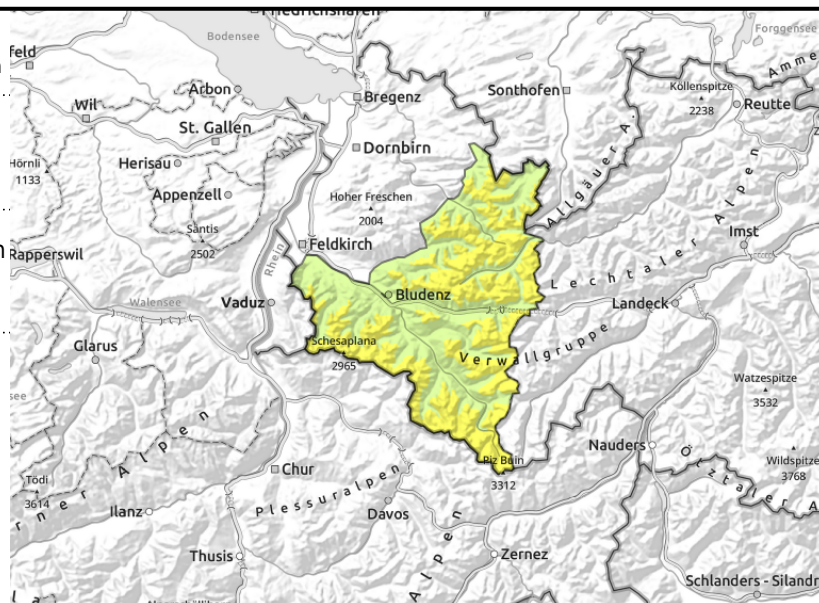
Avalanche report for Thursday, 09.03.2023

Verwall, Silvretta, Rätikon Ost, Rätikon West, Lechquellengebirge, Lechtaler Alpen, Allgäuer Alpen



behind abrupt discontinuities in the terrain, in gullies, bowls

slides, small wet avalanches



Heed fresh snowdrift accumulations at high altitudes

At high altitudes partly moderate, but mostly low avalanche danger prevails. Fresh snowdrift accumulations on steep shady slopes are prone to triggering. Danger zones lie behind abrupt discontinuities in the terrain and in wind-loaded gullies and bowls. They increase in frequency with ascending altitude and over the course of the day. Apart from the risks of being buried in snow masses, the danger of falls needs to be taken into consideration. Weak layers inside the old snowpack are triggerable in very isolated cases by large additional loadin. They are found esp. on very steep NW/N/NE facing slopes above 2500 m and in transitions from shallow to deeper snow. In areas with rain impact, slides and small wet avalanches can be expected.

Snowpack structure

On shady slopes at high altitudes there is still powder or surface hoar. On south-facing slopes at high altitudes there is a melt-freeze crust or wind-pressed surfaces. Fresh snow and drifts are poorly bonded with the old snowpack surface with increasing altitude. On very steep shady slopes in particular, unfavourable intermediate layers are evident. Rainfall is causing a loss of snowpack firmness.

Weather

Nocturnal hours: heavily overcast skies, regional rainfall, snowfall level will descend from 1800-2300 m down to 1800-1500 m. Stormy westerly winds will be blowing in the mountains. Thursday: foggy, with rain and snow showers in the morning, slowly slackening off. Snowfall level at 1600 m. Then some bright intervals, improving visibility, a sunny afternoon. At 2000 m: +1 degree; strong to stormy westerly winds, later easing.

Outlook

Friday will bring more serene conditions. Avalanche danger levels could increase due to fresh snow and wind.

Avalanche problems



Danger ratings



Expositions



Avalanche report for Thursday, 09.03.2023

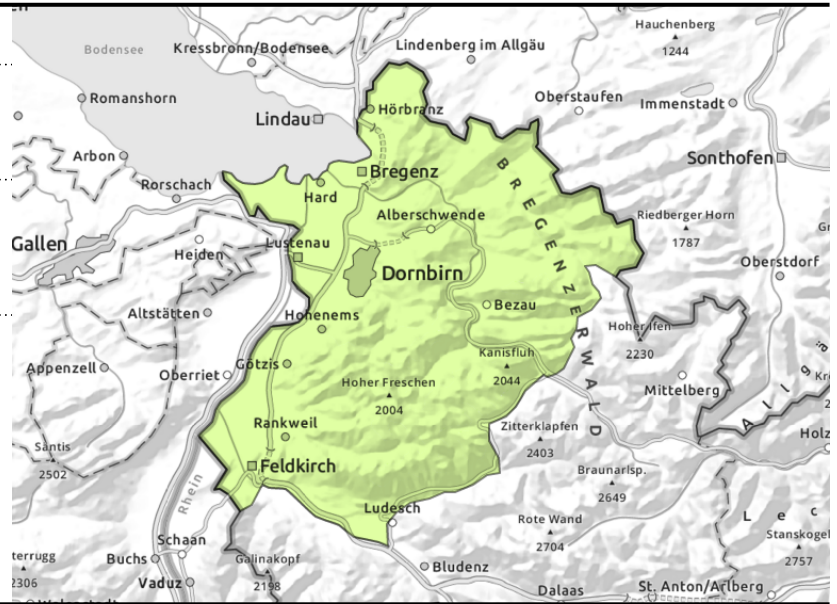
Voralpenbereich, Bregenzerwaldgebirge



steep ridgeline slopes, behind abrupt discontinuities in the terrain



slides, small wet avalanches



Heed fresh snowdrift accumulations at high altitudes, weakening snowpack due to rainfall

Avalanche danger is low, rising slightly during the day. At high altitudes isolated small fresh snowdrift accumulations are being generated. They can be easily triggered. Danger zones are found esp. in steep ridgeline terrain. The risks of taking a fall outweigh those of being buried in snow masses. In areas with rain impact, moist slides can be increasingly expected.

Snowpack structure

The snowpack is largely stable. At high altitudes small fresh snowdrift accumulations have been generated by westerly winds, on shady slopes they are poorly bonded with the old snowpack surface. Light rainfall up to 2000 m will moisten the snowpack surface. At low and intermediate altitudes the surface in early morning is melt-freeze encrusted and then softens during the daytime hours due to light rainfall and higher temperatures.

Weather

Nocturnal hours: heavily overcast skies, regionally heavy rainfall, snowfall level will descend from 1800-2300 m down to 1800-1500 m. Stormy westerly winds will be blowing in the mountains.
Thursday: foggy, with rain and snow showers in the morning, slowly slackening off. Snowfall level at 1600 m. Then some bright intervals, improving visibility, a sunny afternoon. At 2000 m: +1 degree; strong to stormy westerly winds, later easing.

Outlook

Friday will bring more serene conditions. Avalanche danger levels could increase due to fresh snow and wind.

Translated by Jeffrey McCabe, www.creativtrans.com

Avalanche problems



New snow Wind drifted snow Persistent weak layer Wet snow Gliding snow Cornices no distinct

Danger ratings



1 low 2 moderate 3 considerable 4 high 5 very high

Expositions

