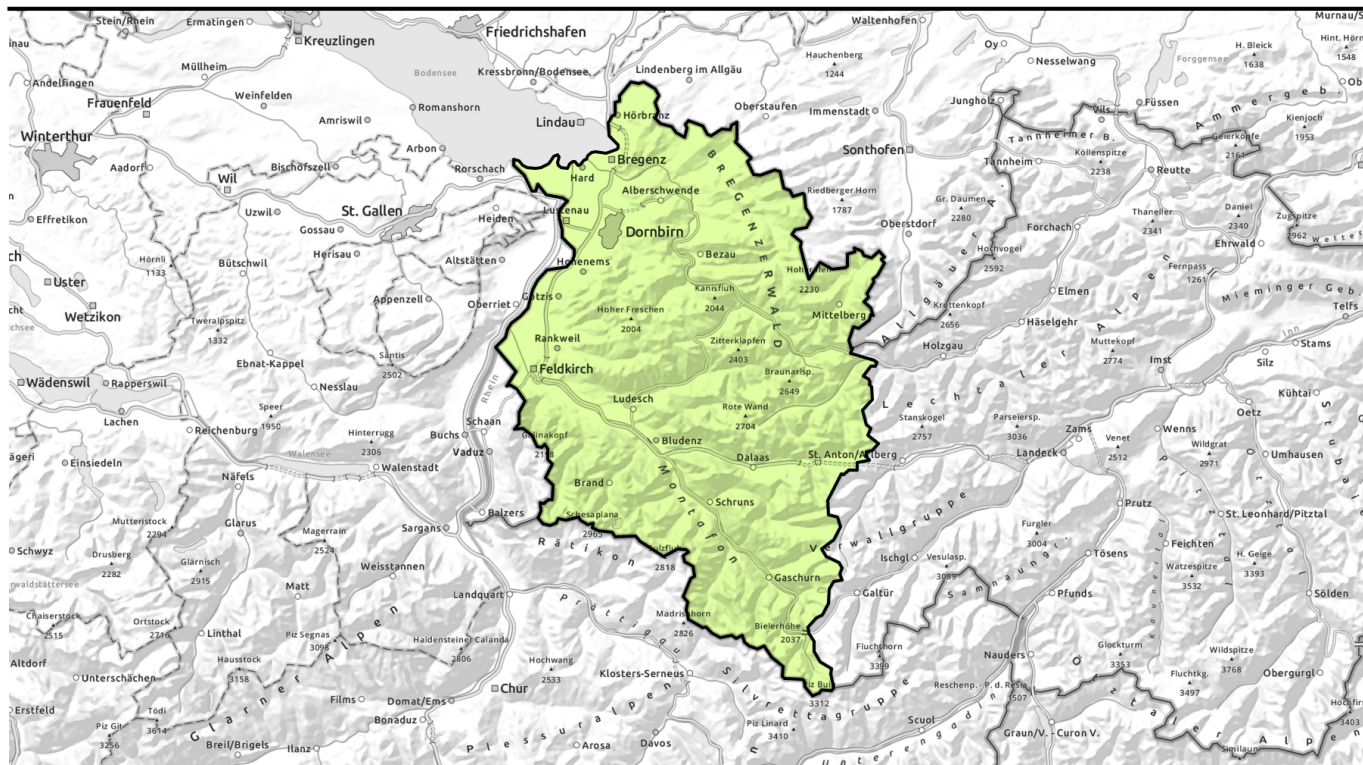


Avalanche report for Tuesday, 07.03.2023



Predominantly low avalanche danger- heed small snowdrift accumulations



Verwall, Silvretta, Rätikon Ost, Rätikon West, Lechquellengebirge, Lechtaler Alpen, Allgäuer Alpen, Bregenzerwaldgebirge, Voralpenbereich



Avalanche problems



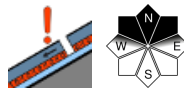
Danger ratings



Expositions



Verwall, Silvretta, Rätikon Ost, Rätikon West, Lechquellengebirge, Lechtaler Alpen, Allgäuer Alpen, Bregenzerwaldgebirge, Voralpenbereich



extremely steep shady terrain



Favourable avalanche conditions widespread - Heed snowdrifts and daytime warming

Favourable conditions prevail. Isolated danger zones occur esp. on shady steep ridgeline slopes, in gullies and bowls and behind abrupt discontinuities in the terrain in high alpine terrain. Weak layers in the old snowpack can be triggered by large additional loading in isolated cases. Danger zones for these lie on steep NW/N/NE facing slopes above 2500 m and in transitions from shallow to deep snow. At intermediate altitudes on snowdrift accumulations are trigger-sensitive and avalanches are still possible. Apart from being buried in snow masses, the risks of taking a fall need to be taken into consideration.

Snowpack structure

Weather conditions have favoured a settling of the snowpack and its consolidation. On shady slopes at high altitudes there is still powder or surface hoar. On south-facing slopes at high altitudes there is a melt-freeze crust or wind-pressed surfaces. Only in high alpine regions are there small snowdrift accumulations and weak intermediate layers on very steep shady slopes. Over the last few days, many very steep shady slopes were skied, and no avalanche triggerings were registered.

Weather

Nocturnal hours: skies will be heavily overcast, clouds will recede in early morning. Tuesday: sunny weather in the morning, only cirrus clouds at high altitudes. In the afternoon, clouds will become denser, light conditions diffuse. At 2000 m: -6 to -2 degrees. Strong, sometimes stormy W/SW winds.

Outlook

Mostly foggy and gloomy with intermittent precipitation in the northern regions. Snowfall level will lie at 1000 m, then ascend to 2000 m by evening. In the southern regions it will remain dry to start with. Strong to stormy westerly winds. Trigger-sensitive snowdrift accumulations can be generated at high altitudes. Zones where there is rainfall will suffer a loss of snowpack firmness.

Translated by Jeffrey McCabe, www.creativtrans.com

Avalanche problems



Danger ratings



Expositions

