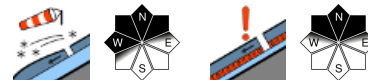


Heed trigger-sensitive snowdrifts - moderate avalanche danger

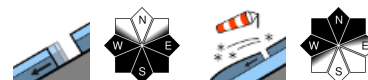


2400 m

Verwall, Silvretta, Rätikon Ost, Rätikon West, Lechquellengebirge, Lechtaler Alpen, Allgäuer Alpen



Voralpenbereich, Bregenzerwaldgebirge



Avalanche problems



Danger ratings



Expositions



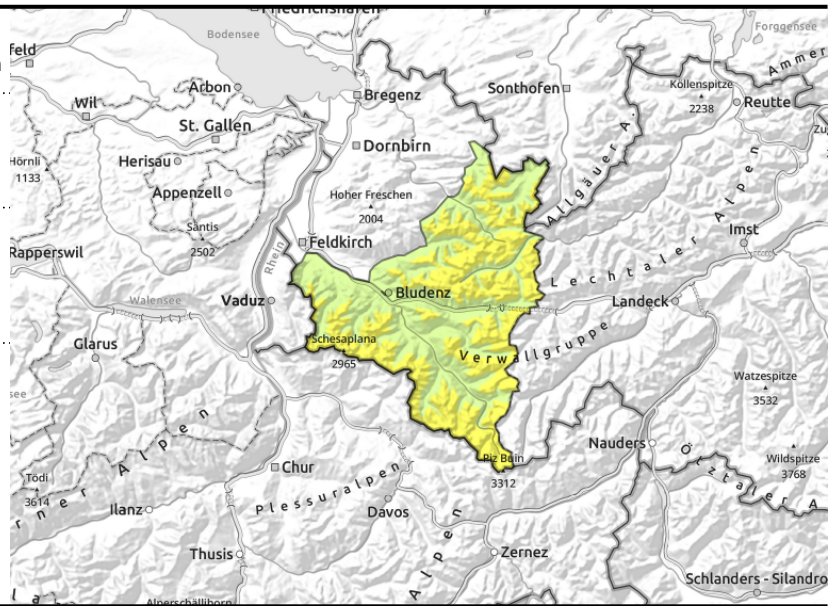
Verwall, Silvretta, Rätikon Ost, Rätikon West, Lechquellengebirge, Lechtaler Alpen, Allgäuer Alpen



in ridgeline terrain, gullies, bowls, behind abrupt discontinuities in the terrain



isolated, shady slopes at high and high-alpine altitudes



Favourable avalanche conditions widespread - Heed snowdrifts and daytime warming

In the morning hours favourable conditions prevail, avalanche danger at high altitudes is moderate. Fresh and older snowdrift accumulations are still trigger-sensitive on steep shady slopes, can in isolated cases be triggered by one sole skier. Danger zones occur esp. on shady steep ridgeline slopes, in gullies and bowls and behind abrupt discontinuities in the terrain above 2400m. Frequency of danger zones increases with ascending altitude. Especially in extremely steep terrain, loose-snow avalanche can trigger naturally due to warmth and solar radiation. Weak layer in the old snowpack can be triggered by large additional loading in isolated cases. Danger zones for these lie on steep W/N/E facing slopes above 2600 m and in transitions from shallow to deep snow. At intermediate altitudes on smooth, steep slopes, isolated glide-snow avalanches are still possible.

Snowpack structure

The snowpack has been able to settle and consolidate due to solar radiation and daytime warming. The fresh snowdrifts are still prone to triggering in places. On shady slopes at high altitudes there is still powder, on south-facing slopes the solar radiation has made great impact. At mid-level inside the snowpack between 2200 and 2600 m there are faceted layers, most likely in transitions from shallow to deep snow, which can be triggered. These danger zones are not visible to the naked eye.

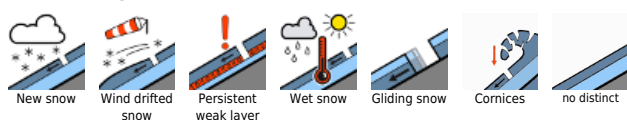
Weather

Nocturnal hours: the clouds will disperse, but some fog will remain. Temperatures: -5 to 0 degrees. Saturday: intermediate influence of a high-pressure front, sunshine from the start, some thin cirrus clouds, high fogbanks over the Rhine Valley and Vorderwald will reach up to 1300 m, slowly receding or dispersing. At 2000 m: -4 degrees. Moderate northerly winds.

Outlook

The weekend will be sunny. Conditions will further a stabilization of the snowpack and the snowdrift accumulations. Danger of wet-snow avalanches will increase somewhat during the day.

Avalanche problems



Danger ratings



Expositions



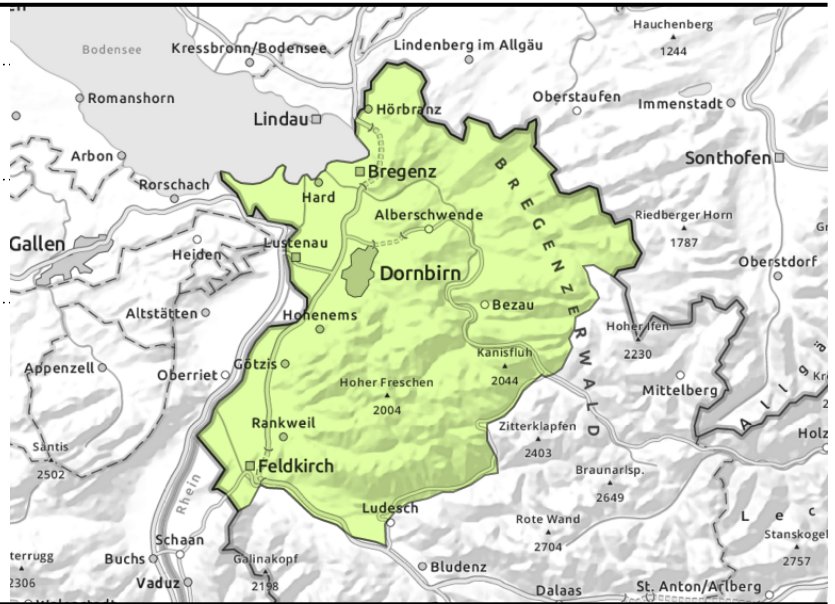
Voralpenbereich, Bregenzerwaldgebirge



on steep sunny grass-covered slopes



near ridgelines, in gullies, bowls, behind abrupt discontinuities in the terrain



Favourable avalanche conditions widespread - Heed snowdrifts and daytime warming

In the morning hours, favourable conditions prevail, avalanche danger is low. Fresh, mostly small snowdrifts are still trigger-sensitive on steep shady slopes and can be triggered in isolated cases. Danger zones occur mostly on shady steep ridgeline slopes, in gullies and bowls and behind abrupt discontinuities in the terrain. At intermediate altitudes isolated glide-snow avalanches are possible on smooth steep sunny grass-covered slopes due to rising temperatures during the daytime.

Snowpack structure

The snowpack has been able to settle and consolidate due to solar radiation and daytime warming. The fresh snowdrifts are still prone to triggering in places. On shady slopes at high altitudes there is still powder, on south-facing slopes the solar radiation has made great impact. At mid-level inside the snowpack between 2200 and 2600 m there are faceted layers, most likely in transitions from shallow to deep snow, which can be triggered. These danger zones are not visible to the naked eye.

Weather

Nocturnal hours: the clouds will disperse, but some fog will remain. Temperatures: -5 to 0 degrees. Saturday: intermediate influence of a high-pressure front, sunshine from the start, some thin cirrus clouds, high fogbanks over the Rhine Valley and Vorderwald will reach up to 1300 m, slowly receding or dispersing. At 2000 m: -4 degrees. Moderate northerly winds.

Outlook

The weekend will be sunny. Conditions will further a stabilization of the snowpack and the snowdrift accumulations. Danger of wet-snow avalanches will increase somewhat during the day.

Translated by Jeffrey McCabe, www.creativtrans.com

Avalanche problems



Danger ratings



Expositions

