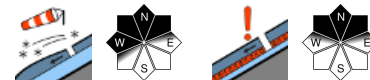


## Heed trigger-sensitive snowdrifts - moderate avalanche danger

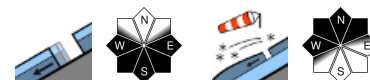


2400 m

Verwall, Silvretta, Rätikon Ost, Rätikon West, Lechquellengebirge, Lechtaler Alpen, Allgäuer Alpen



Voralpenbereich, Bregenzerwaldgebirge



### Avalanche problems



### Danger ratings



### Expositions



# Avalanche report for Friday, 03.03.2023

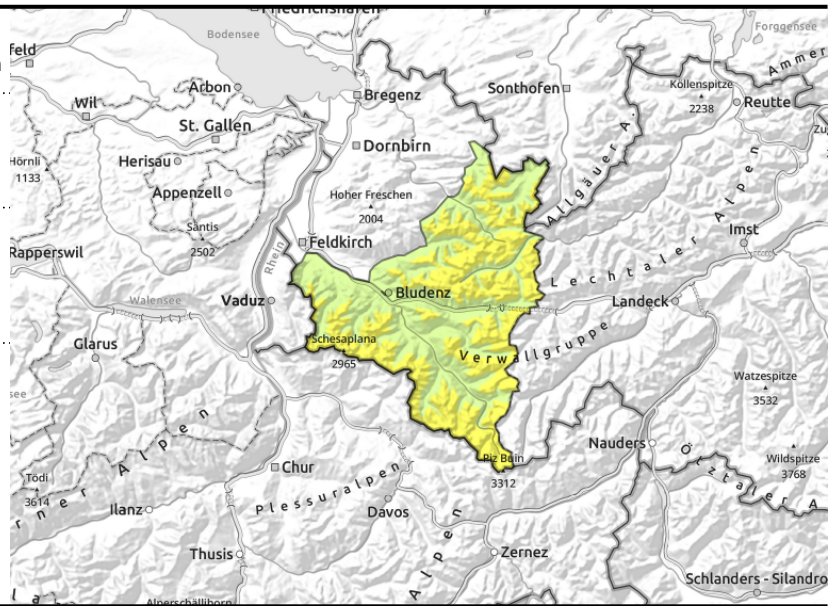
**Verwall, Silvretta, Rätikon Ost, Rätikon West, Lechquellengebirge, Lechtaler Alpen, Allgäuer Alpen**



in ridgeline terrain, gullies, bowls, behind abrupt discontinuities in the terrain



isolated, shady slopes at high and high-alpine altitudes



## Assess fresh snowdrift accumulations carefully, persistent weak layer above 2200m

Fresh and older snowdrift accumulations are still trigger-sensitive on steep shady slopes, can in isolated cases be triggered by one sole skier. Danger zones occur esp. on shady steep ridgeline slopes, in gullies and bowls and behind abrupt discontinuities in the terrain above 2400m. Frequency of danger zones increases with ascending altitude. Especially in extremely steep terrain, loose-snow avalanche can trigger naturally due to warmth and solar radiation. Weak layer in the old snowpack can be triggered by large additional loading in isolated cases. Danger zones for these lie on steep W/N/E facing slopes above 2600 m and in transitions from shallow to deep snow. At intermediate altitudes on smooth, steep slopes, isolated glide-snow avalanches are still possible.

### Snowpack structure

The fresh snow which fell on the weekend has consolidated due to warmth and solar radiation, bonding of fresh snow and drifts to the old snowpack is still prone to triggering in places. On shady slopes at high altitudes there is still powder, on south-facing slopes the solar radiation has made great impact. At mid-level inside the snowpack between 2200 and 2600 m there are faceted layers, most likely in transitions from shallow to deep snow, which can be triggered. These danger zones are not visible to the naked eye.

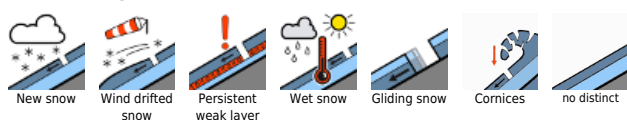
### Weather

Nocturnal hours: following a partly cloud night, in places with high fogbanks, dense clouds will move in from the north. It will remain dry. Temperatures: -2 to +2 degrees.  
 Friday: From the northeast, moist and cloud-filled air masses will move our way, fog will be prevalent towards the north, the higher peaks of the Silvretta could jut out of the fog. No precipitation is anticipated. At 2000 m: -4 degrees. Moderate to brisk NE winds.

### Outlook

The weekend will be mostly sunny, which will stabilise the snowpack and the snowdrift accumulations. The danger of wet-snow avalanches will increase during the course of the day.

#### Avalanche problems



#### Danger ratings



#### Expositions



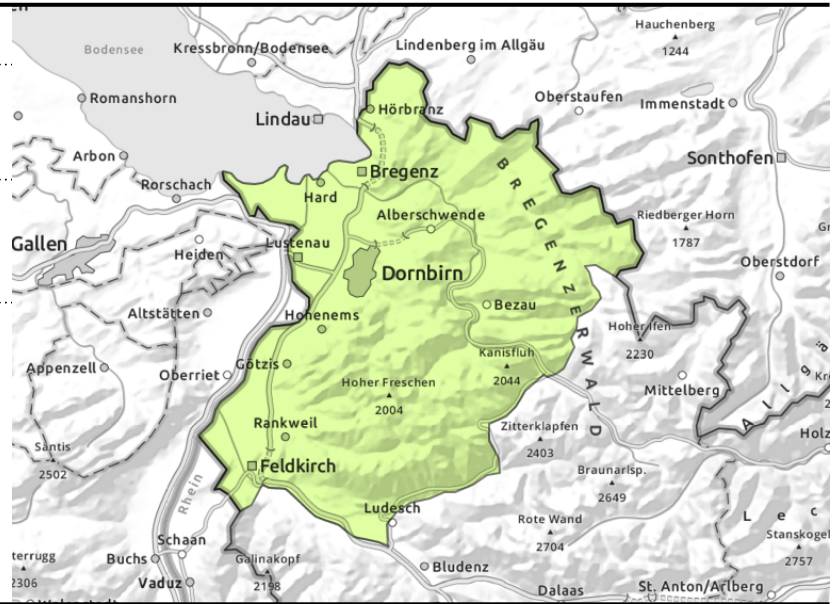
**Voralpenbereich, Bregenzerwaldgebirge**



on steep sunny grass-covered slopes



near ridgelines, in gullies, bowls, behind abrupt discontinuities in the terrain



**Heed trigger-sensitive snowdrifts, attentiveness towards glide-snow avalanches**

In the morning hours, favourable conditions prevail, avalanche danger is low. Fresh, mostly small snowdrifts are still trigger-sensitive on steep shady slopes and can be triggered in isolated cases. Danger zones occur mostly on shady steep ridgeline slopes, in gullies and bowls and behind abrupt discontinuities in the terrain. At intermediate altitudes isolated glide-snow avalanches are possible on smooth steep sunny grass-covered slopes due to rising temperatures during the daytime.

**Snowpack structure**

The snowpack was able to settle due to solar radiation and higher temperatures, and consolidate. Mostly small snowdrift accumulations can be trigger-sensitive on high altitude shady slopes. In some shady terrain there is still powder, on sunny slopes mostly wind-crusts or melt-freeze crusts which soften during the daytime. Glide cracks indicate imminent danger.

**Weather**

Nocturnal hours: following a partly cloud night, in places with high fogbanks, dense clouds will move in from the north. It will remain dry. Temperatures: -2 to +2 degrees.

Friday: From the northeast, moist and cloud-filled air masses will move our way, fog will be prevalent towards the north, the higher peaks of the Silvretta could jut out of the fog. No precipitation is anticipated. At 2000 m: -4 degrees. Moderate to brisk NE winds.

**Outlook**

The weekend will be mostly sunny, which will stabilise the snowpack and the snowdrift accumulations. The danger of wet-snow avalanches will increase during the course of the day.

Translated by Jeffrey McCabe, [www.creativtrans.com](http://www.creativtrans.com)

**Avalanche problems**



**Danger ratings**



**Expositions**

